

# Current Sensor Overview



Hongfa has a range of innovative current sensors that will help you to strengthen your systems with precision and reliability. From industrial automation to renewable energy systems, our sensors offer incomparable accuracy and performance.

Our portfolio includes a comprehensive range of current sensors designed for a wide range of requirements and applications. Whether you need high-precision current measurement in the tightest of spaces or robust sensors for harsh environments, we have what you need. Thanks to advanced technology and careful design, our sensors ensure perfect integration and the best performance in any environment.

## Current Transformer (CT)

### Different Current Transformer Types Available:

- Mini, Solid Core
- Split Core
- DC-immune
- Loading type
- Bus-bar type
- PCB-mount type
- Current type voltage
- Transformer Zero sequence
- High accuracy
- For AC measurements
- 50 or 60 Hz



HFCT-D02



HFCT-M406



HFCT-K16



HFCT-K10



HFCT-M221



HFCT-MO3



[www.hongfa.com](http://www.hongfa.com)

Hongfa Europe GmbH

ADD: Marie-Curie-Ring 26, D-63477 Maintal Germany  
TEL: +49-6181-4306-0 E-mail: [info@hongfa-europe.com](mailto:info@hongfa-europe.com)  
General Manager: Jiaqiang Chen



## Hall Sensor

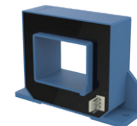
- Open Loop or Closed Loop
- Wide frequency range to 300kHz
- DC, AC and pulsating currents
- Analog output signal



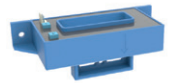
HFCH-C18



HFCH-C09



HFCH-P26



HFCH-P19



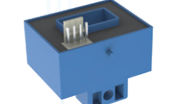
HFCH-L11



HFCH-L01



HFCH-L02



HFCH-P11

## Fluxgate

- Leakage current measurement in IC-CPD in cable (mode 2) and wall boxes (mode 3)
- DC and AC measurements
- Digital and analog output signal
- Sensitive to small currents



HFCF-F12



HFCF-F16



HFCF-F06



HFCF-F22



HFCF-F09



HFCF-F10

