



CONNECT THE ENERGY
CONTACT THE FUTURE

COMPANY PROFILE

Hongfa, (Shanghai Stock Exchange: 600885), founded in 1984, has been adhering to the enterprise spirit of "persevere for progress, strive for excellence", and has built a complete industry system with complete categories and supporting facilities. At present, Hongfa has more than 30 subsidiaries and has established three districts of R & D and production bases. Its products cover various categories, such as medium and low voltage products, relays, high and low voltage switchgear, capacitors, precision parts and automation equipment.

Xiamen Hongfa Electrical Safety & Controls Co., Ltd. is a wholly-owned subsidiary of Hongfa, which specializes in R & D, design and manufacture medium and low voltage products. Its distribution apparatus, terminal apparatus, control apparatus and other products are widely used in real estate, electric power, new energy, industry, HVAC, transportation, information and other fields.

In the United States, Europe, Southeast Asia and other regions, Hongfa has established localized marketing and service networks with global market operation and technical service. Relying on professional and rigorous technical support, fast response and all-round service, safe and reliable product quality and high cost performance, Hongfa has reached business cooperation relationship with many global top 500 enterprises and other well-known enterprises, such as Enel, GE, Carrier, Trane, Johnson Controls, Danfoss, State Grid, China Southern Power Grid, CRRC, China Mobile, China Unicom, etc.

In terms of technology R & D and manufacturing, taking the national enterprise technology center as the platform, Hongfa has set up postdoctoral research workstation, academician and expert workstation. Now it has developed into a leading scientific research and production base in the industry. From product development, mold manufacturing, parts manufacturing, automated product assembly and online testing, Hongfa has successfully built an integrated whole industry chain of medium and low voltage products. In terms of product testing, Hongfa testing center has passed the certification of VDE, UL, CNAS and other international organizations, and has complete testing and analysis equipment for low-voltage products, such as 50kA ultimate short circuit test, 8kA electrical life test, 80kA characteristic test, mechanical simulation and testing system, electromagnetic simulation and testing system.

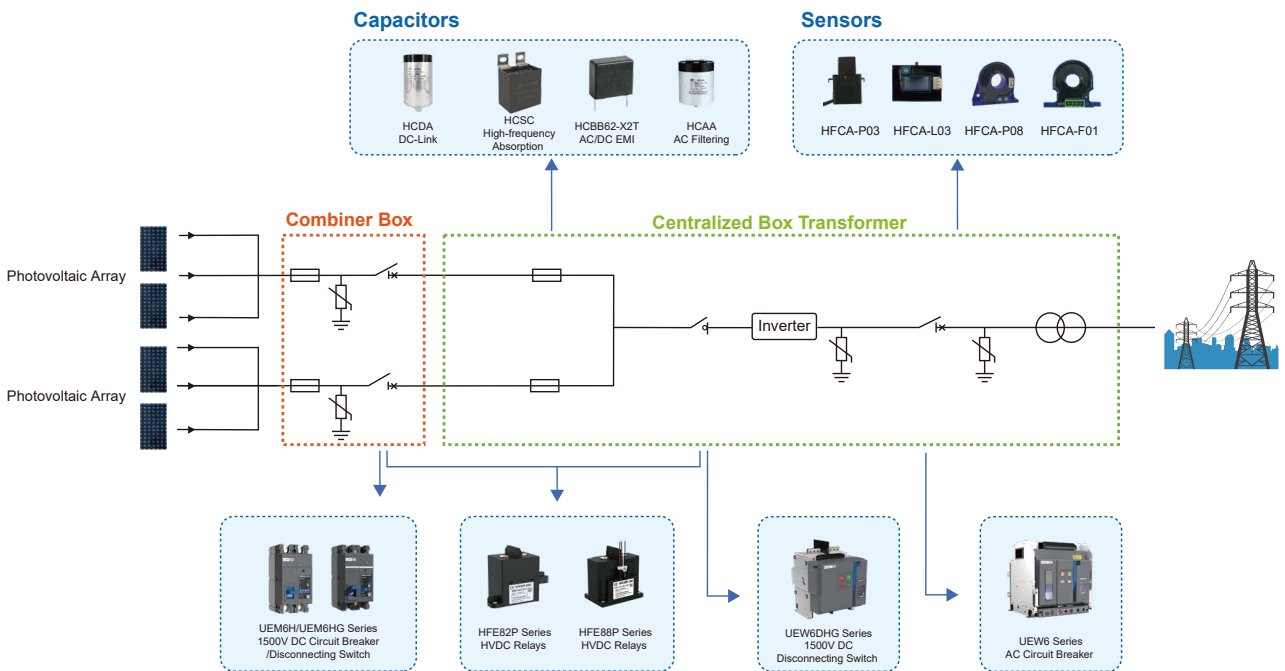
Hongfa always adheres to the policy of "market-oriented and quality oriented", and has a complete set of quality assurance system. Its products have passed UL / CUL, VDE, CQC, CCC and other international safety certification. In the process of quality management, Hongfa actively implements the advanced quality concept, constantly improves the quality management system, continuously promotes the product process quality control and testing, strengthens the supply chain management, and is committed to providing each customer with high-quality products and creating greater value.

Advanced technology and strict quality control have created Hongfa's brand strength. Hongfa is willing to work hand in hand with global customers to share the convenience and happiness brought by science and technology.

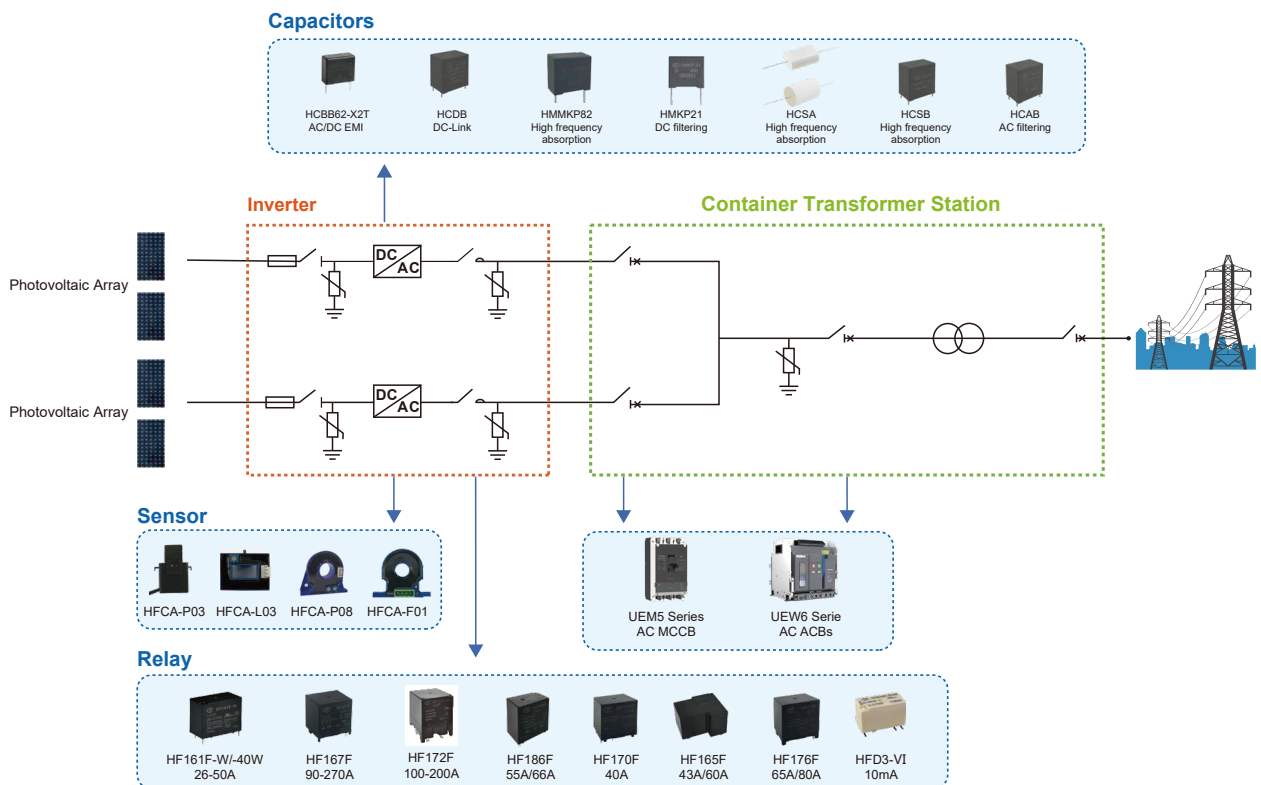


FOCUSING
TO ESTABLISH HONGFA INDUSTRIAL
ECOSYSTEM BY INDUSTRIAL INNOVATION

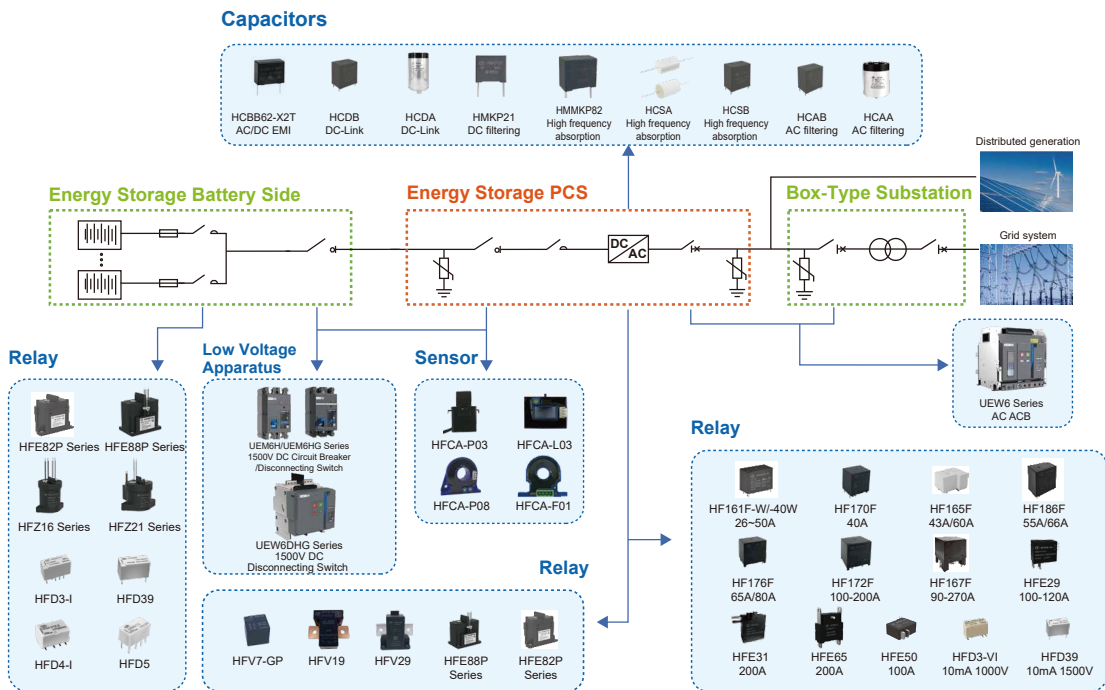
SOLUTION OF CENTRALIZED PHOTOVOLTAIC POWER GENERATION SYSTEM



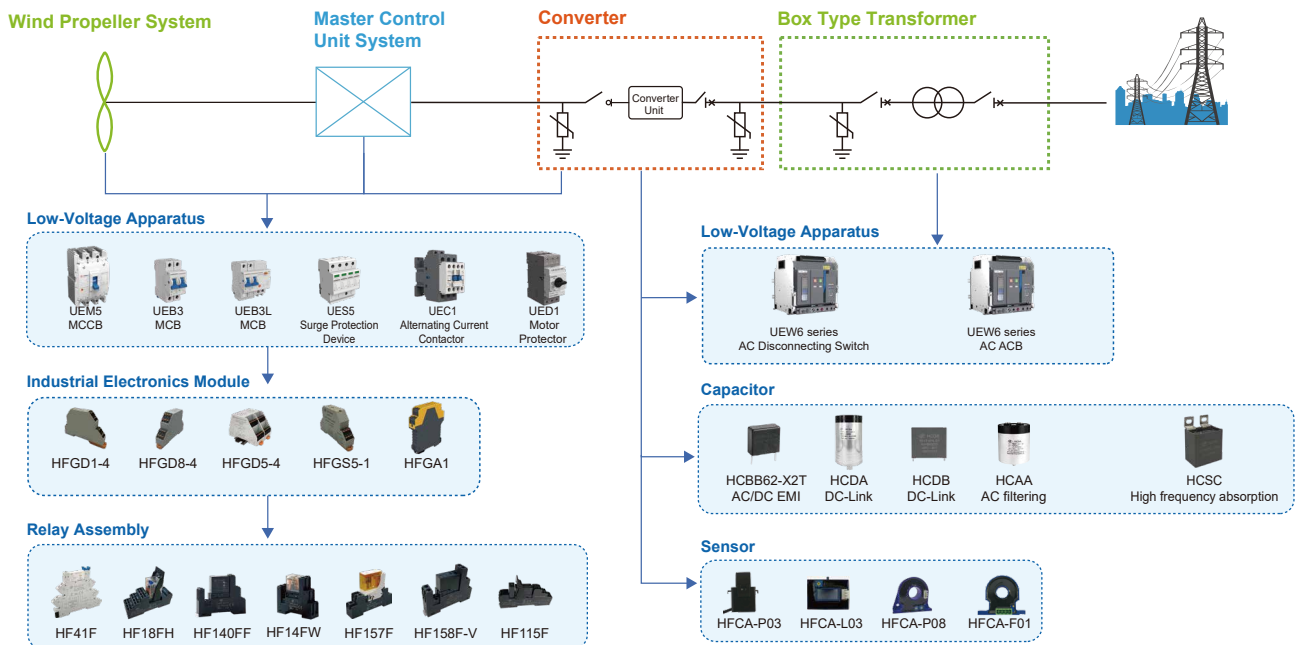
SOLUTION OF STRING PHOTOVOLTAIC POWER GENERATION SYSTEM



ENERGY STORAGE SYSTEM SOLUTION



WIND POWER SYSTEM SOLUTION



AC ACB



Product Characteristics

- High breaking capacity: up to 100kA
- High reliability: high strength insulation shell + high mechanical durability+high electrical durability
- High capacity: rated operating current covers from 1000A to 4000A
- Intellectualization: with the functions of remote control, remote measurement, remote adjustment and remote signaling

Technical Parameter

UEW6

- U_i : 1250V AC
- U_e : 400V/690V/800V
- I_n : 1000A/2000A/2500A/3200A/4000A
- $I_{cs} = I_{cu} = I_{cw} = 100kA(400V)$
- $I_{cs} = I_{cu} = I_{cw} = 85kA(690V)$
- $I_{cs} = I_{cu} = I_{cw} = 50kA(800V)$

UEW6XU

- U_i : 1800V AC
- U_e : 1140V/1380V/1500V
- I_n : 1000A/2000A/2500A/3200A/4000A
- $I_{cs} = I_{cu} = I_{cw} = 75kA(1140V)$
- $I_{cs} = I_{cu} = I_{cw} = 65kA(1380V)$
- $I_{cs} = I_{cu} = I_{cw} = 50kA(1500V)$

UEW6HU

- U_i : 1250V AC
- U_e : 800V/1000V/1140V
- I_n : 1000A/2000A/2500A/3200A/4000A
- $I_{cs} = I_{cu} = I_{cw} = 75kA(800/1000/1140V)$

1500V DC Disconnecter



Product Characteristics

- Compact size, equivalent to 70% of similar products' size (standard 4P), saving installation space
- No deration at ambient temperature of 55 °C
- Each pole has the capacity of DC1500V critical load
- Power consumption is 60% of traditional 4P products
- Modular design for easier maintenance

Technical Parameter

UEW6DHG

- U_i : 1500V DC
- U_e : 1000V/1500V
- I_n : 800A/1000A/1250A/1600A/2000A/2500A
- $I_{ow} = 50kA/1s$

1500V DC MCCB



Product Characteristics

- Compact size, equivalent to 50% of similar products' size (standard 4P), saving installation space
- No deration at ambient temperature of 55 °C
- Each pole has the capacity of DC1500V critical load
- Power consumption is 60% of traditional 4P products
- Arcing distance is less than 50mm (to achieve zero arcing with insulation cover)

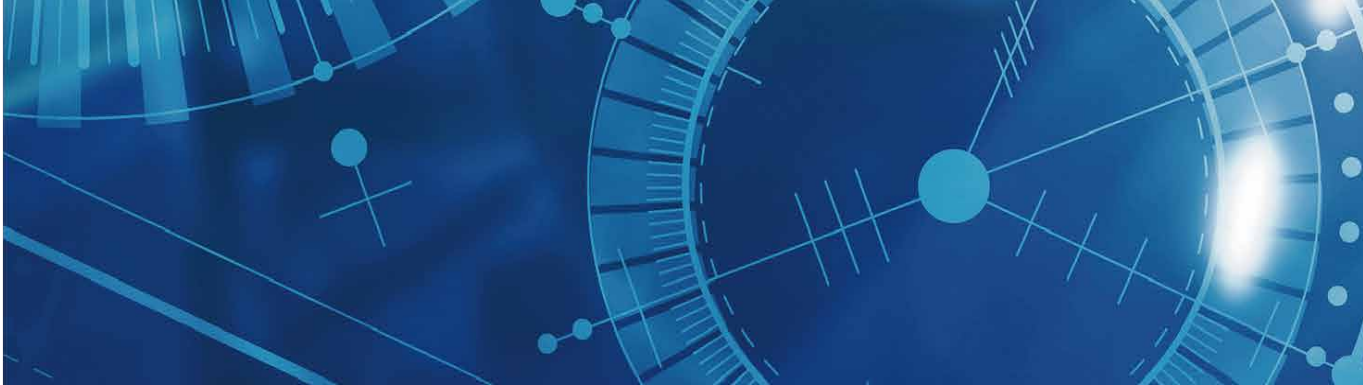
Technical Parameter

UEM6H

- U_i : 1500V DC
- U_e : 1000V/1500V
- I_n : 250A/315A/350A/400A/500A
- $I_{cs} = I_{cu} = 15kA$

UEM6HG

- U_i : 1500V DC
- U_e : 1000V/1500V
- I_n : 250A/315A/350A/400A/500A
- $I_{ow} = 6kA/1s$



APPLICATION SCENARIOS

Hongfa new energy utilization products are widely used in PV power generation, energy storage system,wind power generation system and IDC, as well as rail transit, electric locomotive and other DC power systems.



CENTRALIZED /
STRING
PHOTOVOLTAIC
SYSTEM



Typical application

- 1. Large scale ground PV power station
- 2. Mountain PV power station
- 3. Agricultural PV complementary power station
- 4. Fishery complementary PV power station
- 5. Industrial and commercial roof PV power station



ENERGY
STORAGE SYSTEM



Typical application

- 1. Energy storage power station in Industrial Park
- 2. Energy storage power station in large logistics center



WIND POWER
GENERATION
SYSTEM



Typical application

- 1. Offshore wind power station
- 2. Land wind power station

TYPICAL CUSTOMERS AND PROJECTS



Vietnam oil heater PV project
500MWP The largest PV project in Southeast Asia



Oman 575MW PV project of East ChinaPower
Research Institute of China Power Construction Group
Oman 575MW photovoltaic project



Weinan PV leader base project of SDIC
100MW "PV leader program"



Huaneng Zhanhua PV power generation project
100MW The first batch of PV poverty alleviation projects in China



Qinghai Haixi Nuomuhong wind power plant project
350MW Power allocation project of UHV external delivery base in Hainan state, Qinghai Province



Taiyueshan wind power (phase 1-3) project of State Grid
3X49.5MW The first wind power project in Southeast Shanxi

NEW ENERGY TYPICAL CUSTOMERS



- Sineng Electric Photovoltaic Inverter Equipment Project
- Ruineng Technology (Shenzhen) Inverter Equipment Project
- Xiamen Hithium Energy Storage Equipment Project
- Shenzhen GivEnergy Energy Storage Equipment Project
- Haiboschuang Energy Storage Project
- Beijing Baoguang Zhizhong Energy Storage Project
- Linyang Energy Hubei Xiantao 200MWh Energy Storage Project
- Linyang Yiwei Energy Storage Hubei Xiantao 120MW Energy Storage Project
- Guangxi Yuan Chongzuo 2000MW Integrated Wind and Solar Energy Storage Project
- China Huaneng Group Inner Mongolia Abaga Banner Beligutai Phase I 200MW Wind Power Project
- Sineng Electric Zhonghe Huineng Jinta Huisheng New Energy Co., Ltd. 200MW Photovoltaic Power Generation Project
- Sungrow Ningxia Wuzhong Litong District Phase I 200MW Photovoltaic Project
- China Power Construction Overseas Company Myanmar 200MW Photovoltaic Cluster Project
- Guodian Taiyueshan Wind Power 3X49.5MW (Phase 1-3) Project
- 150MW Composite Photovoltaic Project on Huohongma Road, Huize County, Three Gorges
- State Power Investment Weinan Photovoltaic 100MW Leading Base Project
-



SALES SERVICE HOTLINE :

400 600 1502

Xiamen Hongfa Electroacoustic Co., Ltd.

Add: No.560-578, Donglin Rd., Jimei North Ind. Dist., Xiamen, China

TEL: +86-592-6296062

marketing-eip@hongfa.com

www.hongfa.com



HONGFA GROUP



HONGFA ESC

The relevant information on the products contained is for reference only.
For details, please consult our business staff.