

#### Features

- Nominal current: 10A
- Nominal voltage: 220V
- Insulation resistance:  $\geq 4000\text{M}\Omega$  (Normal)  $\geq 100\text{M}\Omega$  (damp)
- Dielectric strength: 2250V 1min 50Hz
- Ambient temperature:  $-40^{\circ}\text{C}$  to  $85^{\circ}\text{C}$
- Electrical endurance:  $\geq 500$  times
- Installation hole torque: Relays and sockets  $0.45\text{N}\cdot\text{m}$ ,  
On socket structure  $0.6\text{N}\cdot\text{m}$

#### MODEL NAMING RULES

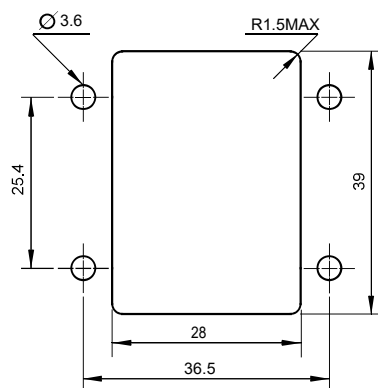
S670M	1	1
Applicable relay types	Mounting Hardware	Contact type
	1: Positioning with M3 screw	1: Wiring Size Specification: (18-16)AWG

Notes: 1) Clamp spring insertion tool: AMP 91002-1  
2) Clamp spring removal tool: AMP 409781-1

#### OUTLINE DIMENSIONS, WIRING DIAGRAM AND PC BOARD LAYOUT

Unit : mm

#### PCB Layout



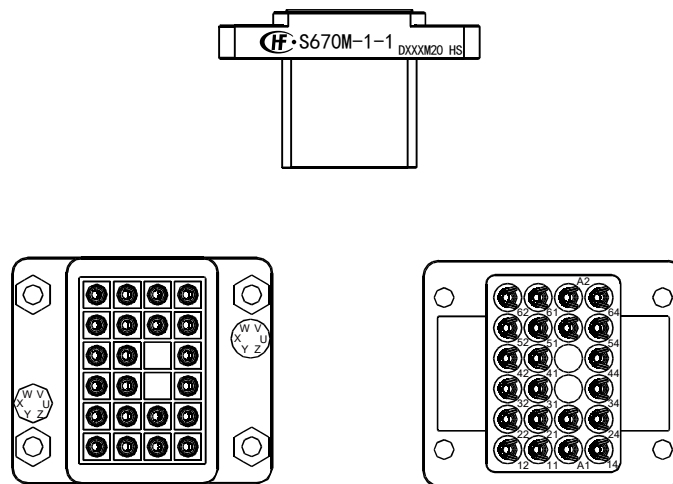
HONGFA RELAY

ISO9001, IATF16949, ISO14001, ISO45001, IECQ QC 080000, ISO/IEC 27001 CERTIFIED

2024 Rev. 1.00

## OUTLINE DIMENSIONS, WIRING DIAGRAM AND PC BOARD LAYOUT

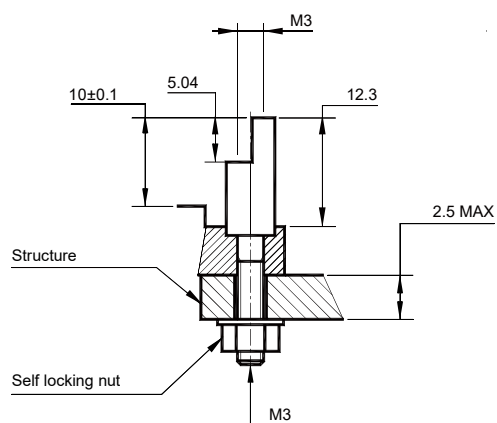
Unit : mm



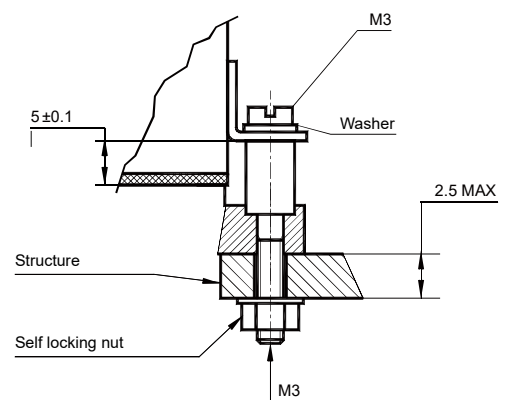
## OUTLINE DIMENSIONS, WIRING DIAGRAM AND PC BOARD LAYOUT

Unit : mm

Schematic diagram of socket installation



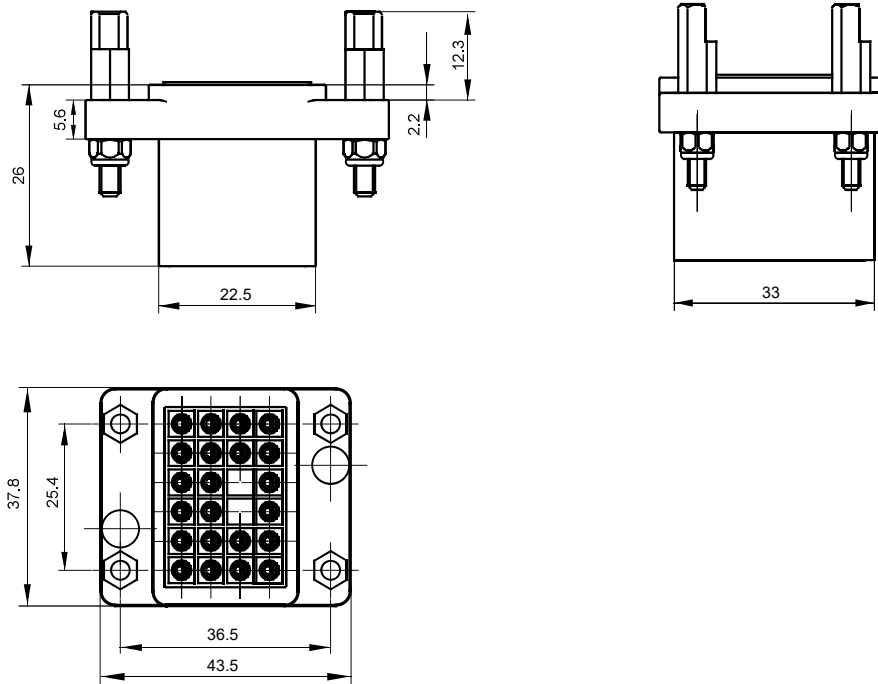
Schematic diagram of relay installation



## OUTLINE DIMENSIONS, WIRING DIAGRAM AND PC BOARD LAYOUT

Unit : mm

Outline Dimensions

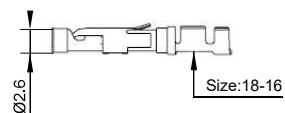


## OUTLINE DIMENSIONS, WIRING DIAGRAM AND PC BOARD LAYOUT

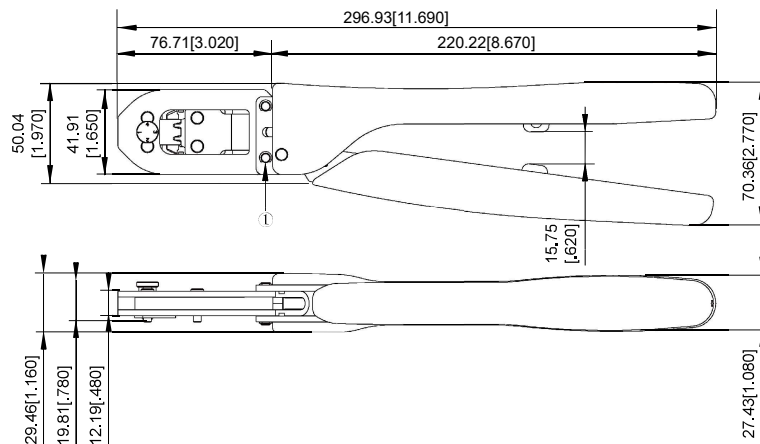
Unit : mm

### Wiring Notes:

Clamp Spring Wiring Specification (Size 18-16, Conductor cross section:  $0.75\text{mm}^2$ - $1.5\text{mm}^2$ )



Clamp Spring Wiring Tool: AMP 91505-1

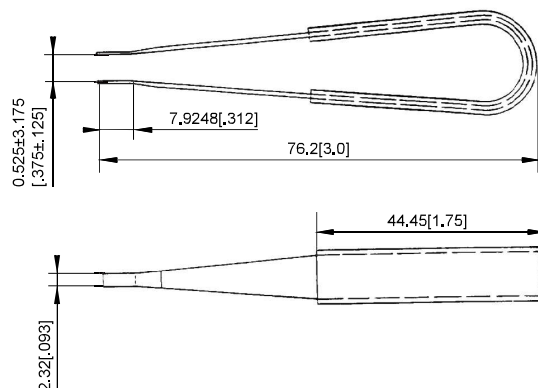


## OUTLINE DIMENSIONS, WIRING DIAGRAM AND PC BOARD LAYOUT

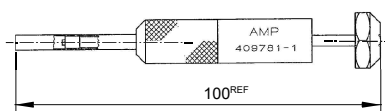
Unit : mm

Clamp spring insertion and removal tools:

① Insertion tools P/N: AMP 91002-1



② Removal tools P/N: AMP 40978-1



### Things to be noticed when selecting sockets:

1. Please choose suitable relay socket according to the actual mounting environment, relay contact poles and terminal layout. If there is any query on selection, please contact Hongfa for the technical service.
2. Socket which can be mounted with markers is furnished with a marker; as for other related components, they should be selected separately. Please do give clear indication of the types of relay sockets and related components you choose while placing order.
3. Main outline dimension, outline dimension > 50mm, tolerance should be  $\pm 1$ mm; 20mm < outline dimension  $\leq 50$ mm, tolerance should be  $\pm 0.5$ mm; 5mm < outline dimension  $\leq 20$ mm, tolerance should be  $\pm 0.4$ mm; outline dimension  $\leq 5$ mm, tolerance should be  $\pm 0.3$ mm.

**Note:** The product dimensions are not marked with dimensional tolerances, which are implemented according to Table 1

Table 1

The overall dimensions of the product are not marked with dimensional tolerances	
Dimensions	Tolerance
$\leq 5$	$\pm 0.3$
5 to 20	$\pm 0.4$
20 to 50	$\pm 0.5$
$\geq 50$	$\pm 1.0$

### Disclaimer

The specification is for reference only. See to "Terminology and Guidelines" for more information. Specifications subject to change without notice. We could not evaluate all the performance and all the parameters for every possible application. Thus the user should be in a right position to choose the suitable product for their own application. If there is any query, please contact Hongfa for the technical service. However, it is the user's responsibility to determine which product should be used only.

© Xiamen Hongfa Electroacoustic Co., Ltd. All rights of Hongfa are reserved.