

HFZ18V-100P

EPOXY SEALED POLARITY SERIES DC RELAY



Features

- Rated 100A switching capability
- Coil does not require polarity, contact load has polarity
- The relay has epoxy resin encapsulation and sealing structure, which can work in explosive or hazardous environment, coils and contacts do not oxidize and contaminate the environment.
- Pre-charging and other applications
- Small size, light weight

RoHS compliant

CONTACT DATA

Contact arrangement	1SH
Contact resistance	3mΩ max.(typ.1m)(6VDC,20A)
Nominal current	100A
Rated load voltage	12~900VDC
Max. breaking current	1000A 320VDC (more than 1 time)
Max.switching power	320kW
Min. load of main contact	1A 12VDC
Min. load of auxiliary contact	8V 100mA
Standard continuous charged current	100A(35mm ²)
Short time overload current	150A 50min (35mm ²) 200A 6min (35mm ²) 300A 50s (35mm ²)
Mechanical endurance	2x10 ⁵ OPS
Electrical endurance	1 x 10 ⁴ OPS (100A 450VDC) 1 x 10 ³ OPS (100A 750VDC) Resistive load, 23°C, 1s on 9s off

COIL DATA

Nominal voltage (VDC)	12	24
Operating voltage (VDC)	9~16	18~32
Max. voltage (VDC)	16	32
Pick-up voltage (VDC)	≤9	≤18
Drop-out voltage (VDC)	≥1	≥2
Coil resistance x (1±7%)	25	110
Min. starting current (A)	--	--
Transient surge current (A)	--	--
Average holding current (A)	0.48	0.218
Steady-state power consumption (W)	Approx.5.8	Approx.5.2

Notes: Other rated voltages can be specially ordered.

CHARACTERISTICS

Insulation resistance	Between open contacts	1000MΩ (1000VDC)
	Between contact and coil	1000MΩ (1000VDC)
Dielectric strength	Between open contacts	2000Vrms
	Between coil & contacts	2000Vrms
Nominal voltage (VDC)		12 24
Operate time (ms)		≤30 ≤30
Release time (ms)		≤10 ≤10
Bounce time(ms)		≤5 ≤5
Shock resistance		196 m/s ²
Vibration resistance		10Hz to 500Hz 98m/s ²
Ambient temperature		-40°C to 85°C
Humidity		5% to 95%RH
Protection grade		IP67
Termination		The M5 internal thread
Outline dimensions		68x50.6x58.3
Weight		350g

Notes: 1) The above values are the initial values at room temperature.
2) The test result can not meet the requirements of voltage resistance and insulation resistance.



HONGFA RELAY

ISO9001, IATF16949, ISO14001, OHSAS18001, IECQ QC 080000 CERTIFIED

2021 Rev. 1.00

ORDERING INFORMATION

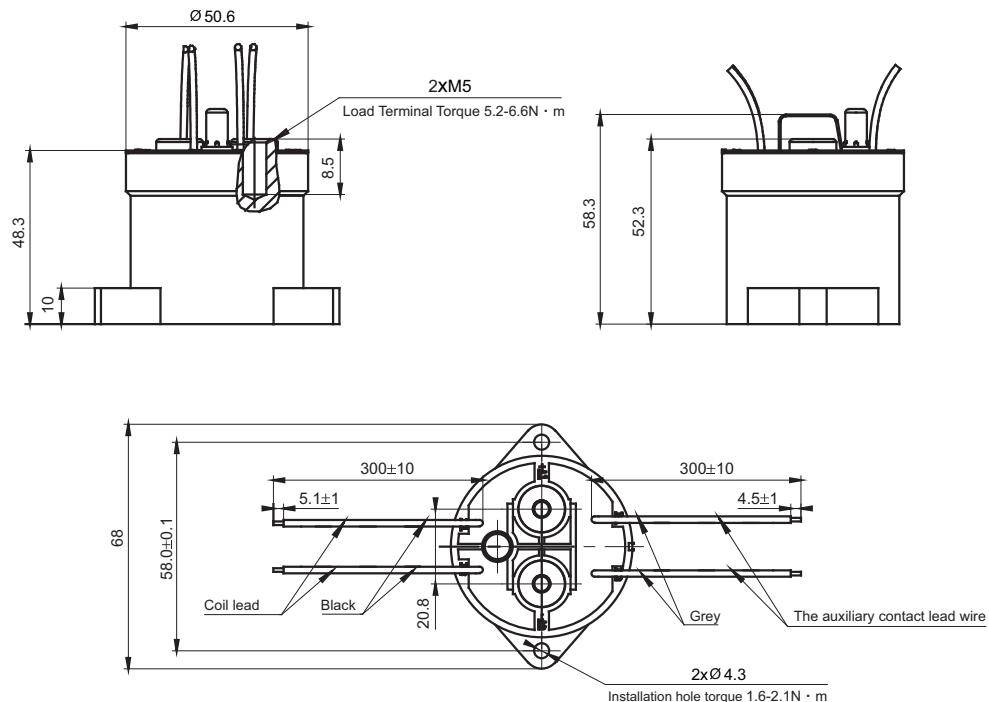
Type	HFZ18	<input type="checkbox"/>	-100	P/	900-	12-	SH	S	A	L	5	-1	(XXX)
Application	Nil: New Energy Power Control V : Vehicle												
Version	100: 100A												
Load polarity	P: polar												
Nominal voltage	900: 12~900VDC												
Coil voltage	12: 12VDC 24: 24VDC												
Contact arrangement	SH: 1 FormA(double-contact of 1 FormA)												
Contact material	S: Silver plated												
Auxiliary Contact Form	Nil: Without auxiliary contact A: Normally open auxiliary contact B: Normally closed auxiliary contact												
Coil terminal	L: Lead wire B: Lead wire with connector												
Load terminal	5: Internal thread mounting												
Sort	1: 1 coil												
Special code ¹⁾	XXX: Customer special requirement						Nil: Standard						

Notes: 1) The customer special requirement express as special code after evaluating by Hongfa.

OUTLINE DIMENSIONS, WIRING DIAGRAM AND PC BOARD LAYOUT

Unit: mm

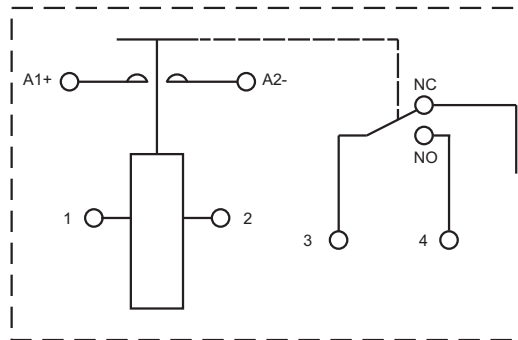
Outline Dimensions



OUTLINE DIMENSIONS, WIRING DIAGRAM AND PC BOARD LAYOUT

Unit: mm

PCB Layout (Bottom view)

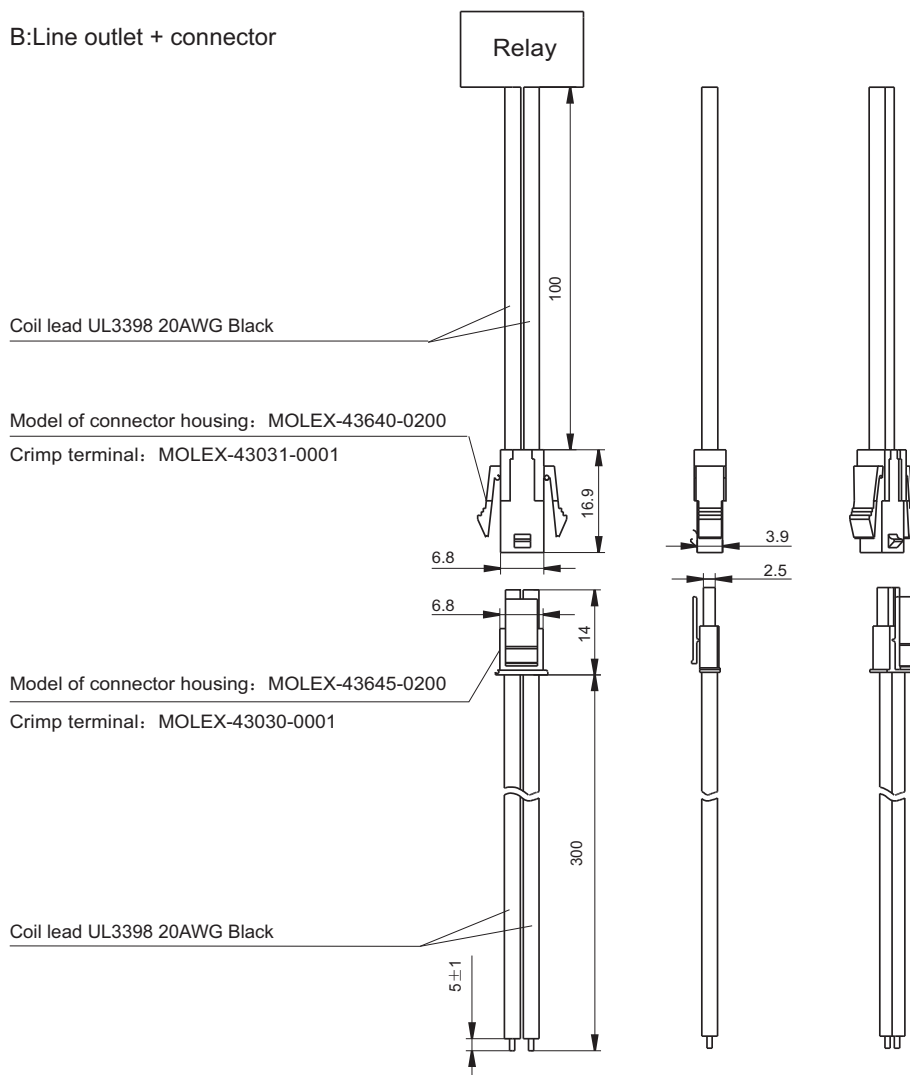


Notes: 1) Dimension tolerance is not indicated for part of the overall dimension of the product. When the overall dimension is less than or equal to 10 mm, the tolerance is ± 0.3 mm; When the overall dimension is between (10 ~ 50) mm, the tolerance is ± 0.5 mm; When the overall dimension is greater than or equal to 50 mm, the tolerance is ± 0.8 mm.

OUTLINE DIMENSIONS, WIRING DIAGRAM AND PC BOARD LAYOUT

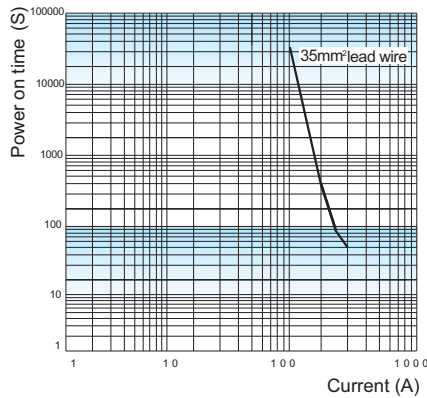
Unit: mm

B:Line outlet + connector



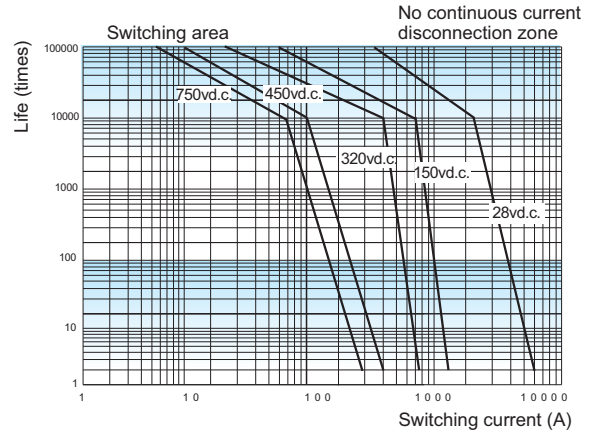
CHARACTERISTIC CURVES

Current carrying capacity



Notes: The above data are measured at room temperature for your reference only. Do not use it to select a fuse directly.

Load switching capability

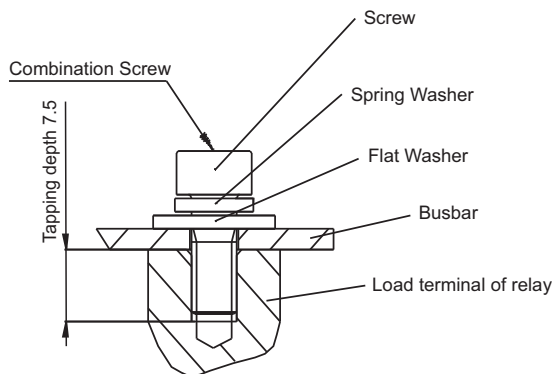


Notes: Resistive load
Insulation after electrical life test $\geq 50M\Omega$ (500VDC)
As the lifetime is related to many factors, it is recommended to verify the ratings according to the actual application.

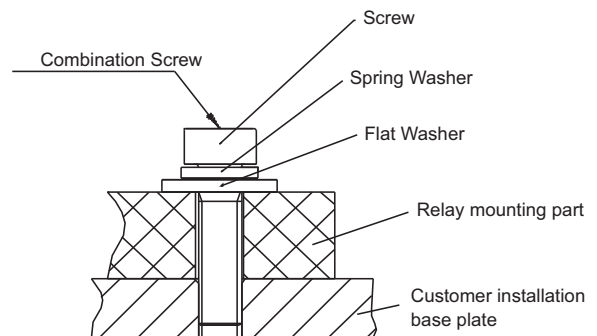
Precautions for use

1. In order to suppress the relay coil reverse electromotive force, it is recommended to connect bi-directional TVS diode or varistor with the coil in parallel (voltage is 1.5-2 times of rated voltage). If diode is used, the relay release time will be greatly prolonged, which may lead to the decline of cut-off performance.
Note: the energy-saving product has a coil suppression reverse electromotive force device.
2. The rated values of contact parameters are tested under resistive load. In the case of inductive load with $L/R > 1ms$, please connect inrush current protection devices for this load. If no measures are taken, electrical durability may decrease and on-off failure may occur. Please leave enough space when design.
3. As a HVDC switching device, it may fail at high temperature when the lifetime and load capacity exceed parameters specified in the manual. The protective circuit which can cut off the load in case of emergency shall be adopted. As a product with limited life, it should be replaced in time to ensure safety.
4. Please avoid grease and other foreign bodies on the terminal, and use connecting wires of 10mm² or above; When installing the load terminal, ensure that the power cable is close to the lead terminal. Install and tighten it in the sequence of flat washer, spring washer and nut, or directly use the self-locking nut. Contamination of the lead terminal or incorrect connection sequence can cause severe overheating and melting of the insulation of the connection cable.
5. Please use washers to prevent looseness during installation. Please control the locking torque within the recommended range. If it exceeds the range, it may cause damage to the shell. When using screws, make sure the gasket is thick and strong enough, otherwise it will deform and burst the casing.

Load wire installation



Relay installation



Notes: Tapping depth of load internal thread M5 is 7.5mm.

Disclaimer

The specification is for reference only. See to "Terminology and Guidelines" for more information. Specifications subject to change without notice. In case there is specific criterion (such as mission profile, technical specification, PPAP etc.) checked and agreed by and between customer and Hongfa, this specific criterion should be taken as standard regarding any requirement on Hongfa product.

We could not evaluate all the performance and all the parameters for every possible application. Thus the user should be in a right position to choose the suitable product for their own application. If there is any query, please contact Hongfa for the technical service. However, it is the user's responsibility to determine which product should be used only.

© Xiamen Hongfa Electroacoustic Co., Ltd. All rights of Hongfa are reserved.