

# SRB400-4Z-C1

## RELAY SOCKETS



Application example

### Features

- Ambient temperature:-40℃ to 80℃
- Load voltage:250VAC/DC
- Load current:12A
- Voltage resistance:between coil & contacts:2600 Vrms, between other contacts:2000 Vrms
- Retainer:Yes
- Coded pin:Yes
- Guide rail installation type:SRB400-4Z-C1 (Din 35 standard rail)  
Screw installation type:SRB400-4Z-C1-1
- Screw torque:0.5N.m (M3 Gasket screw)
- Wiring terminal required:with=7.2mm (Φ3.2 Ring terminal)
- Max. wiring diameter:1×2.5mm<sup>2</sup>(With ring terminal)
- Unit weight:guide rail installation type Approx. 100.3g,  
crew installation type Approx. 74.9g
- Applicable relay type:HFRB400 (relay height 102mm)

### ORDERING INFORMATION

Type	SRB400-4Z-C1	-1	(XX)
Installation method	Nil :Guide rail installation    1 :Screw installation		
Coded pin installation code			

### CODED PIN

SRB400-4Z-C1 guide rail installation :

Coded pin installation code	Adapted relay coil voltage
ME	12VDC
AG	24VDC
FL	36VDC
DG	48VDC
BG	72VDC
US	96VDC
SV	110VDC
EG	115VDC
FG	550VDC

SRB400-4Z-C1-1 screw installation:

Coded pin installation code	Adapted relay coil voltage
ME	12VDC
AG	24VDC
FL	36VDC
DG	48VDC
BG	72VDC
US	96VDC
SV	110VDC
EG	115VDC
FG	550VDC



HONGFA RELAY

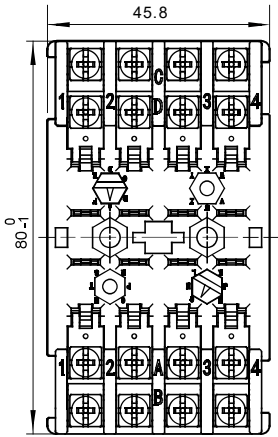
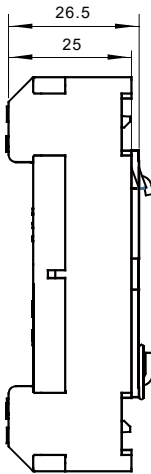
ISO9001,IATF16949 ,ISO14001,ISO45001, IECQ QC 080000, ISO/IEC 27001 CERTIFIED

2023 Rev. 1.00

# OUTLINE DIMENSIONS, WIRING DIAGRAM AND PC BOARD LAYOUT

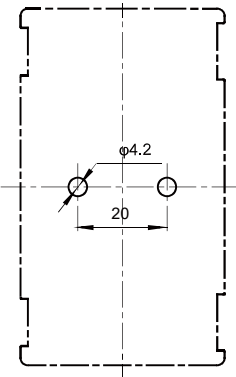
Unit: mm

PCB Layout

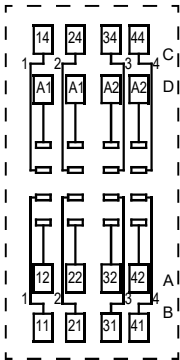


Top view (retainer not installed)

Installation Diagram



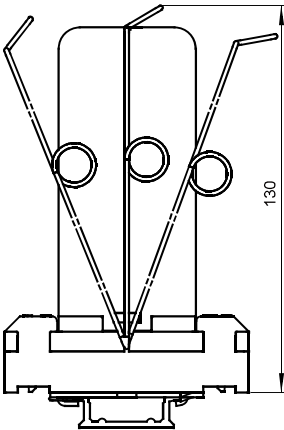
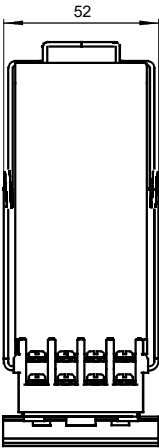
Wiring Diagram



Top view

PCB Layout

(socket with guide rail installation and retainer installed )



## OUTLINE DIMENSIONS, WIRING DIAGRAM AND PC BOARD LAYOUT

Unit: mm

### Retainer

Type: SRB400-H1



### Coded pin

Type: SRB400-BM1



### Things to be noticed when selecting sockets:

1. Please choose suitable relay socket according to the actual mounting environment, relay contact poles and terminal layout. If there is any query on selection, please contact Hongfa for the technical service.
2. Socket which can be mounted with markers is furnished with a marker; as for other related components, they should be selected separately. Please do give clear indication of the types of relay sockets and related components you choose while placing order.
3. The above is only an example of typical socket and related component type which is suitable to HF18FZ relay. If you have any special requirements, please contact us.
4. Main outline dimension, outline dimension  $> 50\text{mm}$ , tolerance should be  $\pm 1\text{mm}$ ;  $20\text{mm} < \text{outline dimension} \leq 50\text{mm}$ , tolerance should be  $\pm 0.5\text{mm}$ ;  $5\text{mm} < \text{outline dimension} \leq 20\text{mm}$ , tolerance should be  $\pm 0.4\text{mm}$ ; outline dimension  $\leq 5\text{mm}$ , tolerance should be  $\pm 0.3\text{mm}$ .
5. DIN rail mounting: recommend to use standard rail  $35 \times 7.5 \times 1\text{mm}$ ,  $35 \times 15 \times 1\text{mm}$ .

### Disclaimer

The specification is for reference only. See to "Terminology and Guidelines" for more information. Specifications subject to change without notice. We could not evaluate all the performance and all the parameters for every possible application. Thus the user should be in a right position to choose the suitable product for their own application. If there is any query, please contact Hongfa for the technical service. However, it is the user's responsibility to determine which product should be used only.

© Xiamen Hongfa Electroacoustic Co., Ltd. All rights of Hongfa are reserved.