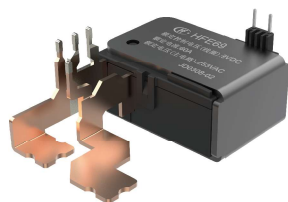


# HFE69 SUBMINIATURE INTERMEDIATE POWER RELAY



## Features

- 60A Latching relay
- Electrical endurance 10000ops
- According to IEC62055-31:UC2
- integrated design, facilitate the auto-assembly and production
- anti-AC magnetic, high consistency

RoHS compliant

## CONTACT DATA

Contact arrangement	1A,1B
Contact resistance <sup>1)</sup>	Typical value: <sup>2)</sup> ≤0.5mΩ(60A)
Contact material	AgSnO <sub>2</sub>
Contact rating	See "electrical endurance"
Max. switching voltage	276VAC
Max. switching current	90A
Max. switching power	24840W
Mechanical endurance	1x10 <sup>5</sup> ops

Notes: 1) The data shown above are initial values.

2) Typical value: Sampling quantity for contact resistance shall not less than 20 pcs, take the average value from 5 continuous measurements for each sample.

## CHARACTERISTICS

Insulation resistance	1000MΩ(500VDC)	
Dielectric strength	Between coil and contact	4000VAC 1min
	Between open contacts	2000VAC 1min
Creepage distance	8mm	
Set time (at nomi. volt.)	≤20ms	
Reset time (at nomi. volt.)	≤20ms	
Shock resistance	Functional	98m/s <sup>2</sup>
	Destructive	980m/s <sup>2</sup>
Vibration resistance	10Hz ~ 55Hz 1.5mm DA	
Humidity	5% ~ 85% RH	
Ambient temperature	-40°C ~ 85°C	
Termination	Coil termination	PCB&QC
	Load termination	QC
Unit weight	Approx. 100g	
Construction	Dust protected	

Notes: The data shown above are initial values.

## COIL

Rated power	Single coil latching: Approx. 1.5.0W Double coils latching: Approx. 3.0W
-------------	---

## COIL DATA

23°C

### Single coil latching

Nominal Voltage VDC	Set / Reset Voltage VDC <sup>1)2)</sup>	Pulse Duration (Recommended) ms	Coil Resistance x (1±10%) Ω
6	≤4.2	50~100	24
9	≤6.3	50~100	54
12	≤8.4	50~100	96
24	≤16.8	50~100	384
48	≤33.6	50~100	1536

Notes: 1) The data shown above are initial values.

2) The above values are used as incoming inspection standards, and the recommended driving voltage is 1~1.5 times of the rated voltage.

## ELECTRICAL ENDURANCE

Voltage (Uc)	Current (Ic)	Power Factor	Close Open time (s)	Electrical endurance	
				5000ops	Total: 10000ops
253VAC	60A	COSØ=1	10:20	5000ops	Total: 10000ops
		COSØ=0.5		5000ops	

Notes: 1) Electrical endurance meet IEC62055-31 test requirement, do the inductive load test after the resistive load test.

2) Only some typical ratings of UC are listed above, if more special ratings required, please contact us.



HONGFA RELAY

ISO9001、IATF16949、ISO14001、ISO45001、IECQ QC 080000、ISO/EC 27001

2025 Rev.1.00

## ORDERING INFORMATION

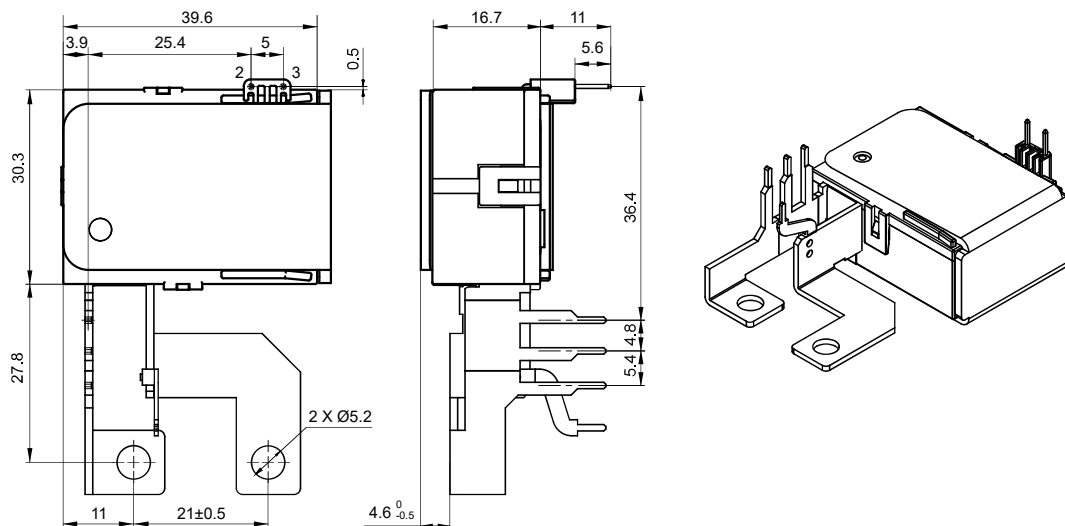
Type	HFE69 /9 -H 7 T 4 -1 -R (XXX)
Coil voltage	6, 9, 12, 24, 48VDC
Contact arrangement <sup>1)</sup>	D: 1 Form B H: 1 Form A
Load terminal type	7: With customized connections
Contact material	T: AgSnO <sub>2</sub>
Coil angle form	2: No bowleg 4: Bowleg (See outline dimensions)
Coil type	1: Single coil latching 2: Double coils latching
Polarity	R: Reverse polarity Nil: Standard polarity
Special code <sup>2)</sup>	XXX: Customer special requirement

**Notes:** 1) H means that relay is on the "reset" status when delivery; D means that relay is on the "set" status when delivery. If no special required by customer, we will keep the relay on the "set" status when delivery.  
2) We can make special design according to customer's requirement.

## OUTLINE DIMENSIONS, WIRING DIAGRAM AND PCB LAYOUT

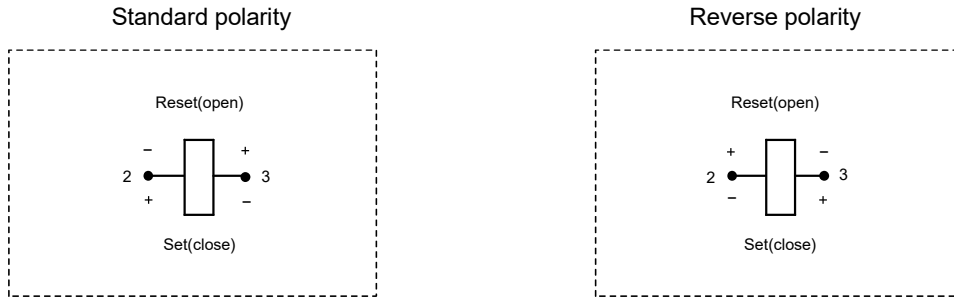
Unit: mm

### Outline Dimensions



Note: 1) In case of no tolerance shown in outline dimension: outline dimension ≤ 1mm, tolerance should be ±0.2mm; outline dimension > 1mm and ≤ 10mm, tolerance should be ±0.3mm; outline dimension > 10mm, tolerance should be ±0.4mm.

Wiring Diagram



CAUTIONS

1. Relay is on the "reset" or "set" status when being released from stock, with the consideration of shock risen from transit and relay mounting, relay would be changed to "set" or "reset" status, therefore, when application (connecting the power supply), please reset the relay to "set" or "reset" status on request.
2. Do not energize voltage to "set" coil and "reset" coil simultaneously. And also long energized time (more than 1 min) should be avoided.
3. Normally the load terminals are not suitable for reflow solder, wave solder or tin solder, we suggest use spot welding. Load terminals shall be prevented from assembly stress, or freely move.
4. Relays used for metering measuring applications are usually made with dust proof structure, while most relays could be made specially per customer's specific requirements. No longer than 6 months' storage time is recommended for this kind of relay, and please pay attention to the storage environment. To ensure contact reliability, we will keep contact status be closed when delivery if no special required by customer.

Disclaimer

The specification is for reference only. Specifications subject to change without notice. We could not evaluate all the performance and all the parameters for every possible application. Thus the user should be in a right position to choose the suitable product for their own application. If there is any query, please contact Hongfa for the technical service. However, it is the user's responsibility to determine which product should be used only.