

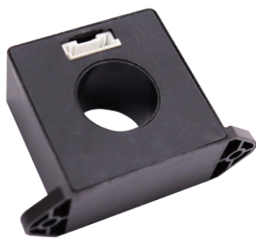
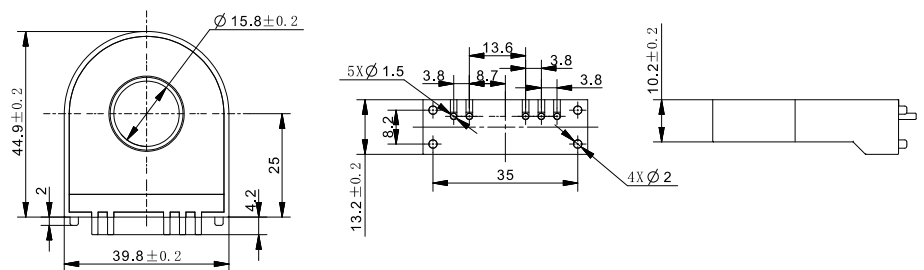
Fluxgate Current Sensor

Leakage current measurement in an IC-CPD in-cable (mode 2) and for wall boxes (mode 3) contact and protection device. Meet the remaining current test requirements related to IEC62955 charging mode three.

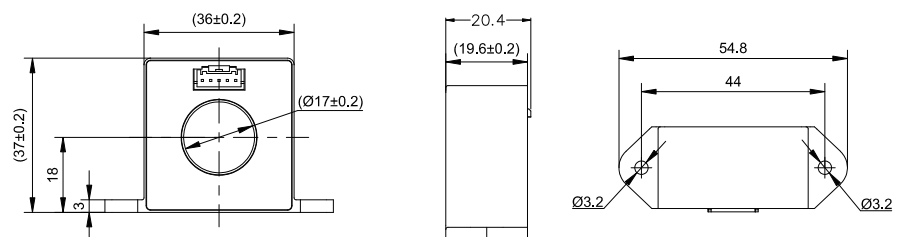
Product and Outline dimensions



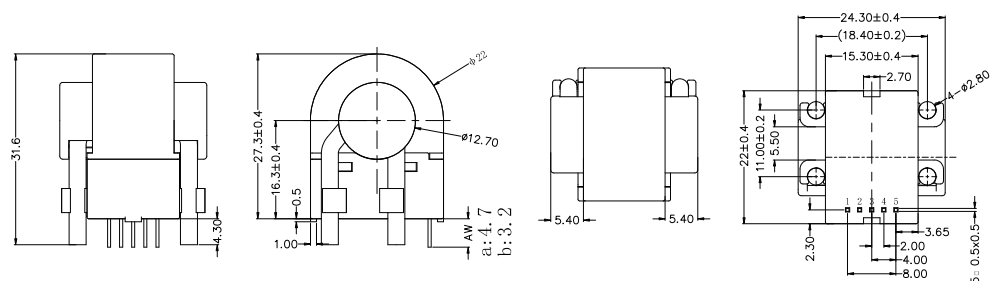
HFCA-F06



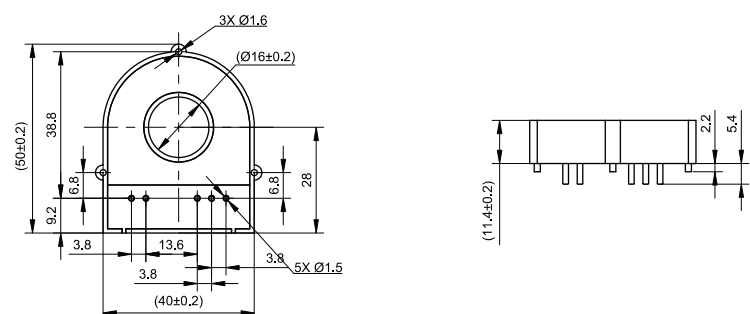
HFCA-F09



HFCA-F10



HFCA-F11



[illegible][illegible]

Characteristics

Model	Rated Input current (A)	Monitoring current (A)	Output method	Comply to
HFCA-F06	63/32A	DC 6mA, AC 30mA	Switch output	IEC62955
HFCA-F09	63/32A	DC 6mA, AC 30mA	Switch output	IEC62955
HFCA-F10	63/32A	DC 6mA, AC 30mA	Switch output	IEC62955, IEC62752
HFCA-F11	63/32A	DC 6mA	Switch output	IEC62955
HFCA-F12	63/32A	DC 6mA	Switch output	IEC62955
HFCA-F13	63/32A	DC 6mA, AC 30mA	Switch output	IEC62955, IEC62752
HFCA-F16	63/32A	DC 6mA, AC 30mA	Switch output	IEC62955, IEC62752
HFCA-F19	63/32A	DC 6mA, AC 30mA	Switch output	IEC62955