

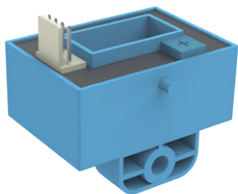
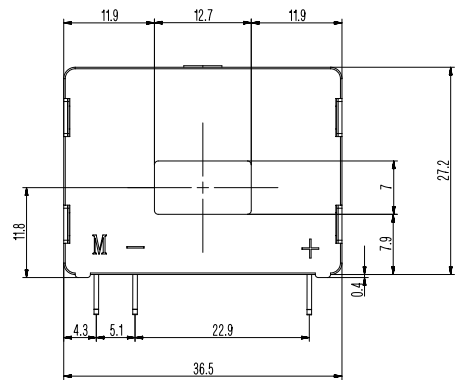
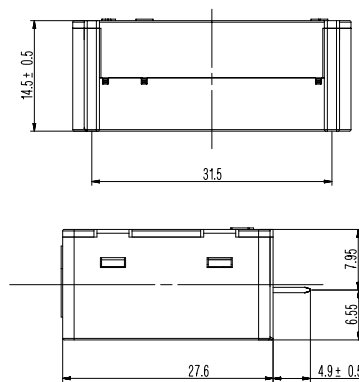
## Hall effect Current Sensor

DC, AC and pulsating currents, as well as using these measurements to display, the control system can be used. For example: communication base station, electric locomotive, subway, trolley bus, railway, wind power, DC flexible transmission, charging pile, DC screen, UPS power supply, inverter, rectifier, frequency conversion governor, inverter welding machine, electrolytic electroplating, numerical control machine, Microcomputer and power network monitoring system are widely used.

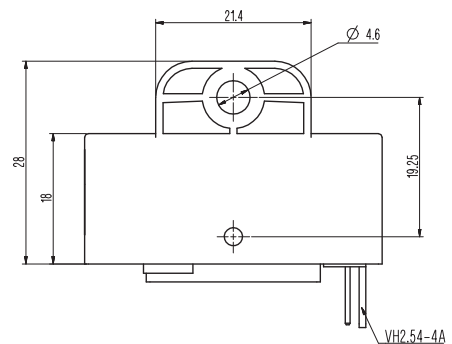
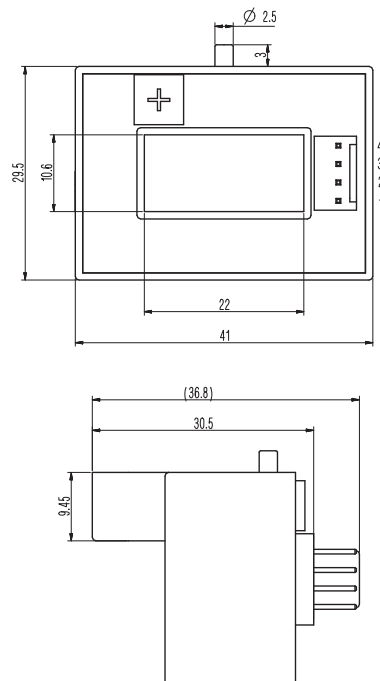
### Product and Outline dimensions



HFCA-L01



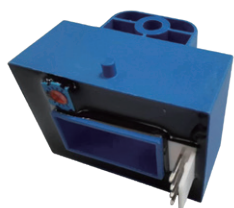
HFCA-L02



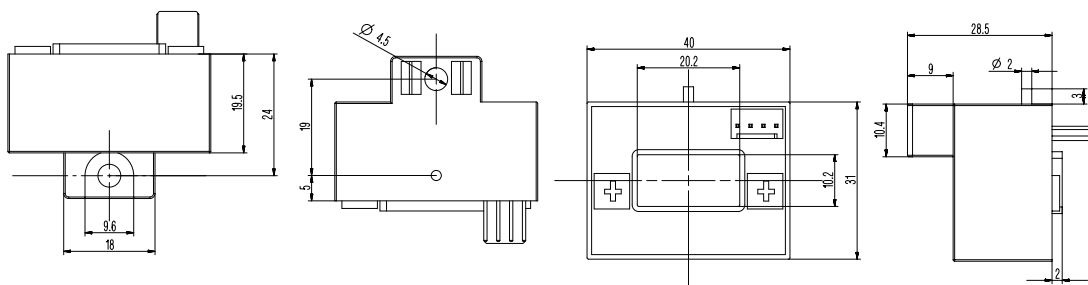
## Characteristics

Model	Rated Input current (A)	Rated output current (mA)	Bias current (mA)	Accuracy
HFCA-L01/25A-D	25A	25mA	$\leq \pm 0.2\text{mA}$	$\leq \pm 0.4\%$
HFCA-L01/50A-D	50A	50mA		
HFCA-L01/75A-D	75A	50mA		
HFCA-L01/100A-D	100A	50mA		
HFCA-L02/25A-D	25A	25mA	$\leq \pm 0.2\text{mA}$	$\leq \pm 0.4\%$
HFCA-L02/50A-D	50A	50mA		
HFCA-L02/100A-D	100A	50mA		
HFCA-L02/200A-D	200A	100mA		
HFCA-L02/300A-D	300A	100mA		

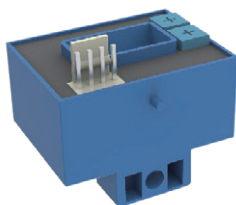
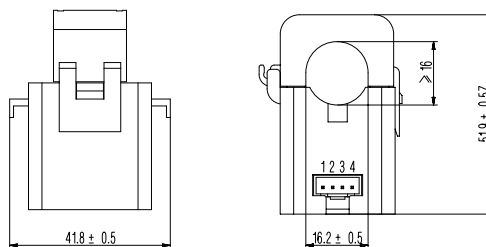
## Product and Outline dimensions



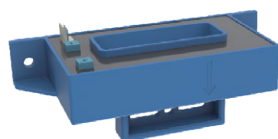
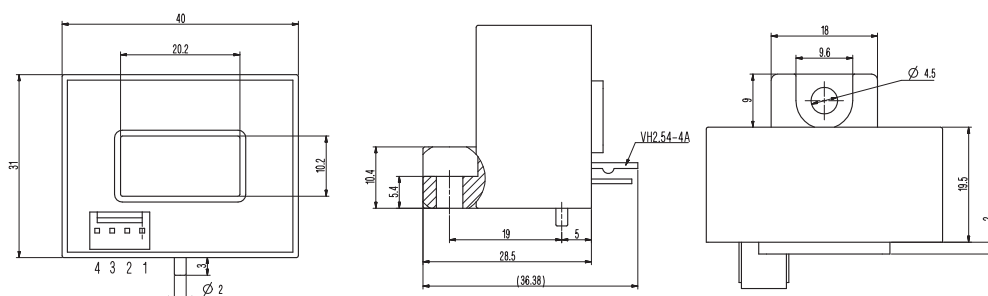
HFCA-P01



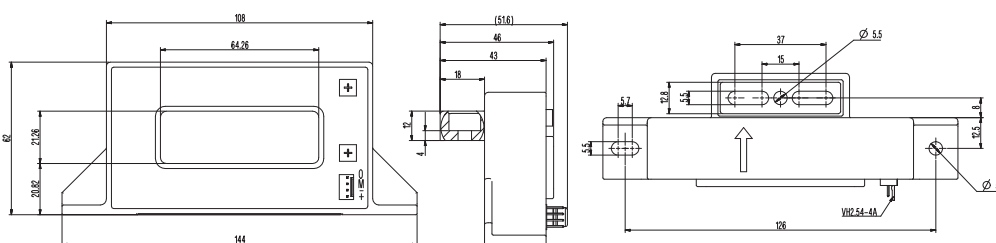
HFCA-P03



HFCA-P11



HFCA-P19



## Characteristics

Model	Rated Input current (A)	Rated output current (V)	Bias current (V)	Accuracy
HFCA-P01/50A-S	50A	0.625V	2.5±0.015V	≤±1%
HFCA-P01/100A-S	100A			
HFCA-P01/150A-S	150A			
HFCA-P01/200A-S	200A			
HFCA-P01/300A-S	300A			
HFCA-P01/500A-S	500A			
HFCA-P01/600A-S	600A			
HFCA-P03/100A-S	100A	1V	2±0.015V	≤±1%
HFCA-P11/50A-D	50A	≤±20mV	4±0.04V	≤±1%
HFCA-P11/100A-D	100A			
HFCA-P11/150A-D	150A			
HFCA-P11/200A-D	200A			
HFCA-P11/300A-D	300A			
HFCA-P11/500A-D	500A			
HFCA-P11/600A-D	600A			
HFCA-P19/500A-D	500A	≤±20mV	4±0.04V	≤±1%
HFCA-P19/600A-D	600A			
HFCA-P19/850A-D	850A			
HFCA-P19/1000A-D	1000A			
HFCA-P19/1500A-D	1500A			
HFCA-P19/2000A-D	2000A			