

## Split-Core Current Transformer

### Main features

- Divisible iron core, with high accuracy and low magnetic loss
- Elegant appearance, compact size, light weight, easy installation

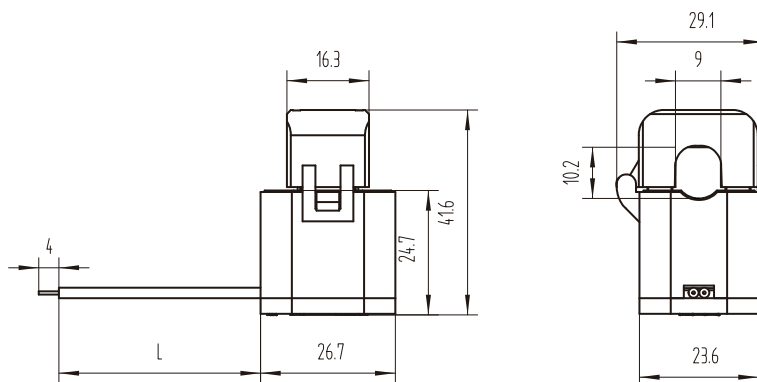
### Typical applications:

- Electronic multifunction meter and field calibrator, measurements with instruments and protection functions
- General measurement and protection for power or electric systems that have rather requires motility or dispose limited space

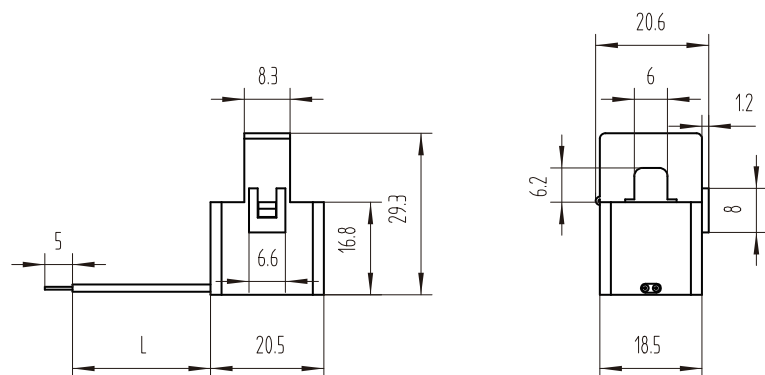
### Product and Outline dimensions



HKCT-10-02

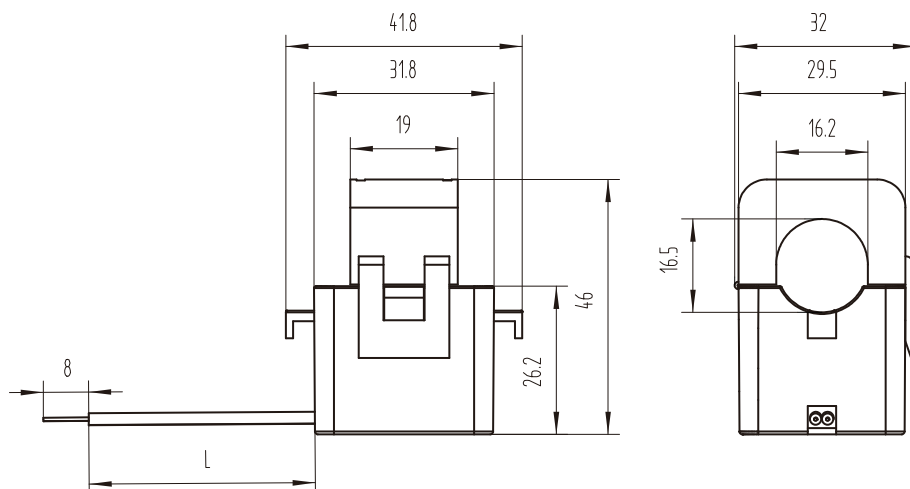


HKCT-06





HKCT-16



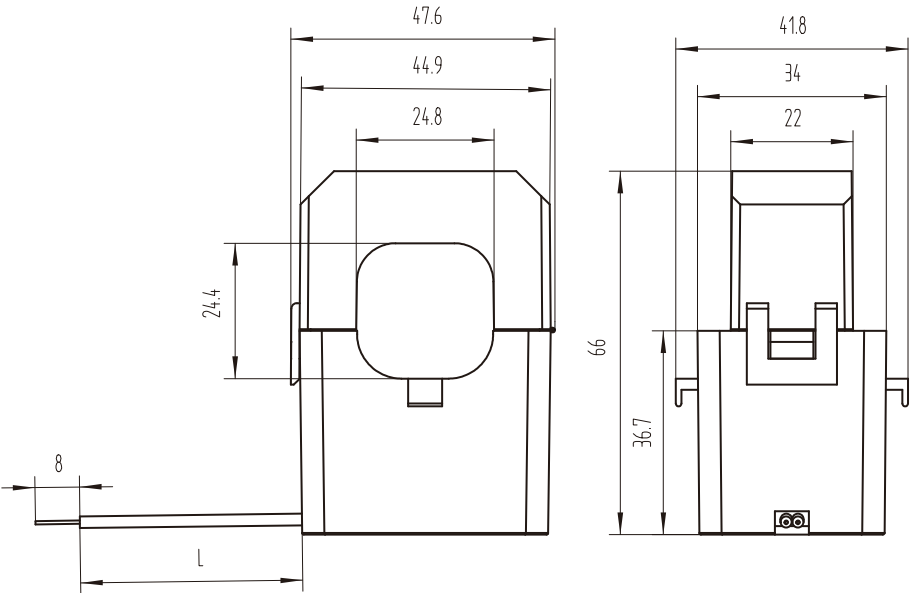
## Characteristics

Model	Type	Rated primary current (A)	Max primary current (A)	Rated secondary current (mA)	Rated sampling voltage (mV)	Load Resistance( $\Omega$ )	Accuracy Class
HKCT-06	5A/2.5mA	5A	6A	2.5mA	125mV	50 $\Omega$	1.0
	20A/10mA	20A	24A	10mA	500mV	50 $\Omega$	1.0
HKCT-10-02	5A/2.5mA	5A	60A	2.5mA	125mV	50 $\Omega$	0.5/10
	6A/2.0mA	6A	60A	2.0mA	100mV	50 $\Omega$	0.5/1.0
	60A/20mA	60A	60A	20mA	1000mV	50 $\Omega$	0.5/1.0
HKCT-16	5A/2.5mA	5A	80A	2.5mA	125mV	50 $\Omega$	0.5/1.0
	6A/2.0mA	6A	100A	2.0mA	100mV	50 $\Omega$	0.5/1.0
	100A/40.0	100A	120A	40.0mA	2000mV	50 $\Omega$	0.5/1.0
	200A/66.7	200A	240A	66.7mA	1500mV	22.5 $\Omega$	1.0

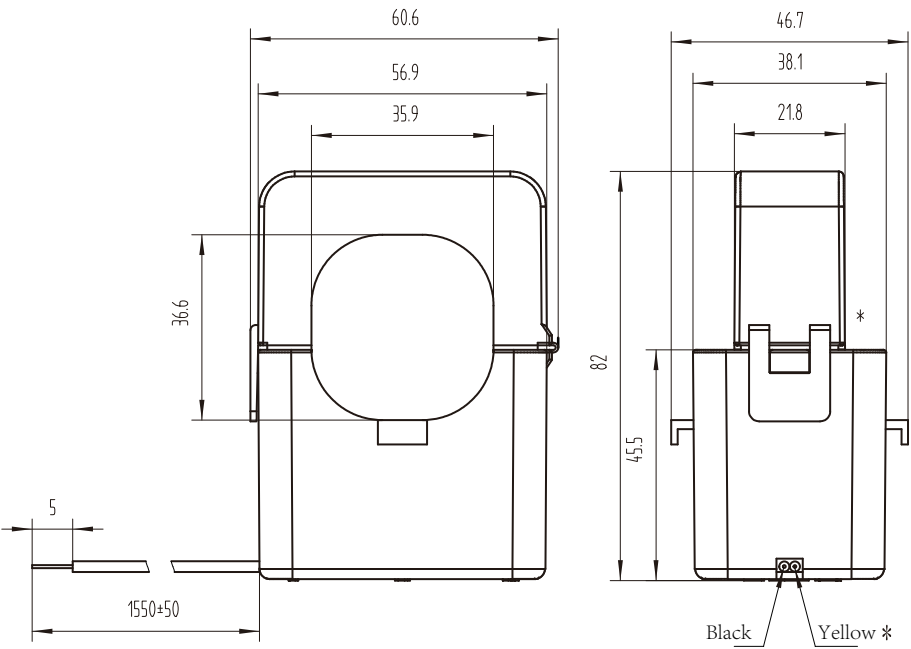
Product and Outline dimensions



HKCT-24



HKCT-36



## Characteristics

Model	Type	Rated primary current (A)	Max primary current (A)	Rated secondary current (mA)	Rated sampling voltage (mV)	Load Resistance( $\Omega$ )	Accuracy Class
HKCT-24	50A/25mA	50A	60A	25mA	1250mV	50 $\Omega$	1.0
	100A/20mA	100A	120A	20mA	1000mV	50 $\Omega$	0.5/1.0
	200A/40mA	200A	240A	40mA	2000mV	50 $\Omega$	0.5/1.0
	400A/80mA	400A	480A	80mA	2000mV	25 $\Omega$	1.0
	100A/1A	100A	120A	1000mA	500mV	0.5 $\Omega$	1.0
	200A/1A	200A	240A	1000mA	600mV	0.6 $\Omega$	1.0
	400A/1A	400A	480A	1000mA	1000mV	1.0 $\Omega$	1.0
HKCT-36	80A/40mA	80A	100A	40mA	2000mV	50 $\Omega$	1.0
	100A/20mA	100A	120A	20mA	1000mV	50 $\Omega$	0.5/1.0
	200A/40mA	200A	240A	40mA	2000mV	50 $\Omega$	0.5/1.0
	400A/80mA	400A	480A	80mA	2000mV	25 $\Omega$	1.0
	100A/1A	100A	120A	1000mA	500mV	0.5 $\Omega$	1.0
	200A/1A	200A	240A	1000mA	600mV	0.6 $\Omega$	1.0
	400A/1A	400A	480A	1000mA	1000mV	1.0 $\Omega$	1.0