

HF21FF

SUBMINIATURE HIGH POWER RELAY



File No.:E133481



Features

- 15A switching capability
- 1 Form A, 1 Form B and 1 Form C configurations
- Standard PCB layout
- Plastic sealed and dust protected types available

CONTACT DATA

Contact arrangement	1A, 1B	1C
Contact resistance ¹⁾	100mΩ max.(at 1A 6VDC)	
Contact material	AgSnO ₂	
Contact rating	15A 120VAC	10A 120VAC/24VDC
Max. switching voltage	120VAC / 30VDC	
Max. switching current	15A	10A
Max. switching power	1800VA / 240W	
Mechanical endurance	1 x 10 ⁷ OPS	
Electrical endurance	1H type: 1 x 10 ⁵ OPS (15A 120VAC, Resistive load, Room temp., 1s on 9s off)	

Notes: 1) The data shown above are initial values.

CHARACTERISTICS

Insulation resistance	100MΩ (at 500VDC)	
Dielectric strength	Between coil & contacts	1500VAC 1min
	Between open contacts	750VAC 1min
Operate time (at rated. volt.)	10ms max.	
Release time (at rated. volt.)	5ms max.	
Shock resistance	Functional	98m/s ²
	Destructive	980m/s ²
Vibration resistance	10Hz to 55Hz 1.5mm DA	
Humidity	5% to 85% RH	
Operation temperature range	-40°C to 70°C	
Termination	PCB	
Unit weight	Approx. 13g	
Construction	Plastic sealed, Dust protected	

Notes: 1) The data shown above are initial values.

2) Please find coil temperature curve in the characteristic curves below.

3) UL insulation system: Class F, Class B.

COIL

Coil power	5VDC to 24VDC: Approx. 360mW; 48VDC: Approx. 530mW
------------	---

COIL DATA

at 23°C

Nominal Voltage VDC	Pick-up Voltage VDC max. ¹⁾	Drop-out Voltage VDC min. ¹⁾	Max. Voltage VDC ²⁾	Coil Resistance Ω
5	3.75	0.5	6.5	70 x (1±10%)
6	4.50	0.6	7.8	100 x (1±10%)
9	6.75	0.9	11.7	225 x (1±10%)
12	9.00	1.2	15.6	400 x (1±10%)
18	13.5	1.8	23.4	900 x (1±10%)
24	18.0	2.4	31.2	1600 x (1±15%)
48	36.0	4.8	62.4	4500 x (1±15%)

Notes: 1) The data shown above are initial values.

2)*Maximum voltage refers to the maximum voltage which relay coil could endure in a short period of time.

SAFETY APPROVAL RATINGS

UL/CUL	1 Form C	10A 120VAC
	1 Form A	15A 120VAC TV-5 120VAC
	1 Form B	15A 120VAC 1800VA at 25°C, Ballast 6.5A 277VAC 1800VA at 25°C, Ballast 8.3A 120VAC 1000VA at 90°C, Ballast 3.6A 277VAC 1000VA at 90°C, Ballast

Notes: 1) All values unspecified are at room temperature.

2) Only typical loads are listed above. Other load specifications can be available upon request.



HONGFA RELAY

ISO9001, IATF16949, ISO14001, ISO45001, IECQ QC 080000, ISO/IEC 27001 CERTIFIED

2025 Rev. 1.00

ORDERING INFORMATION

Type	HF21FF / 012 -1H S T F (XXX)
Coil voltage	5, 6, 9, 12, 18, 24, 48VDC
Contact arrangement	1H: 1 Form A 1D: 1 Form B 1Z: 1 Form C
Construction ¹⁾	S: Plastic sealed Nil: Dust protected
Contact material	T: AgSnO ₂
Insulation standard	F: Class F Nil: Class B
Special code ³⁾	XXX: Customer special requirement Nil: Standard

Notes: 1) Under the ambience with dangerous gas like H₂S, SO₂ or NO₂, plastic sealed type is recommended; Please test the relay in real applications. If the ambience allows, dust protected type is preferentially recommended.

2) Contact is recommended for suitable condition and specifications if water cleaning or surface process is involved in assembling relays on PCB.

3) The customer special requirement express as special code after evaluating by Hongfa.

OUTLINE DIMENSIONS, WIRING DIAGRAM AND PC BOARD LAYOUT

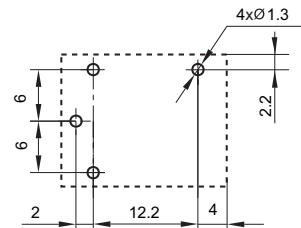
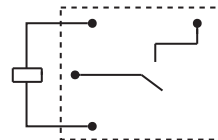
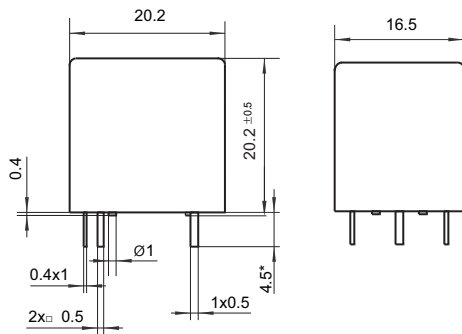
Unit: mm

Outline Dimensions

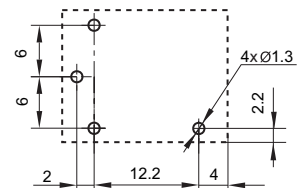
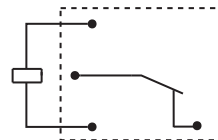
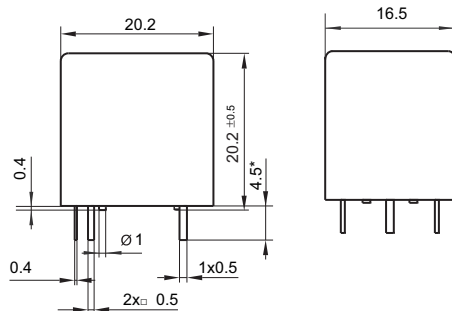
Wiring Diagram
(Bottom view)

PCB Layout
(Bottom view)

1 Form A



1 Form B



OUTLINE DIMENSIONS, WIRING DIAGRAM AND PC BOARD LAYOUT

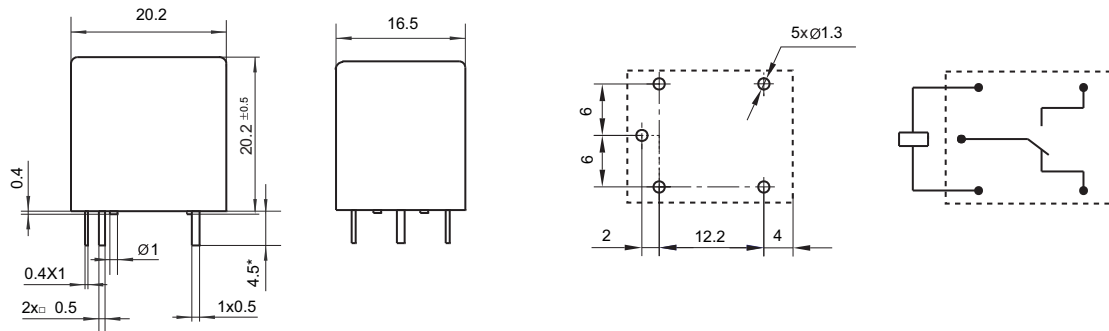
Unit: mm

Outline Dimensions

Wiring Diagram
(Bottom view)

PCB Layout
(Bottom view)

1 Form C

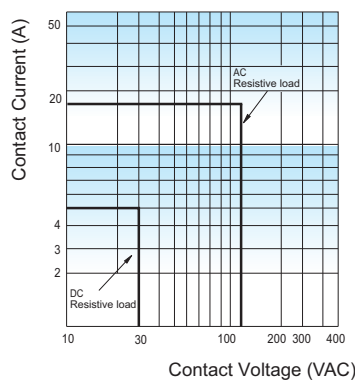


Remark:1) * The additional tin top is max. 1mm.

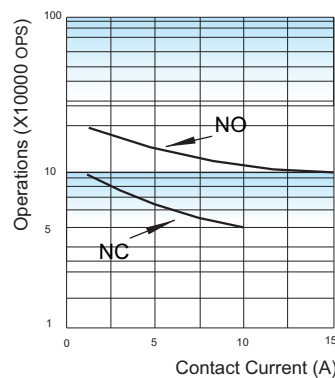
- 2) In case of no tolerance shown in outline dimension: outline dimension ≤ 1 mm, tolerance should be ± 0.2 mm; outline dimension > 1 mm and ≤ 5 mm, tolerance should be ± 0.3 mm; outline dimension > 5 mm, tolerance should be ± 0.4 mm.
- 3) The tolerance without indicating for PCB layout is always ± 0.1 mm.

CHARACTERISTIC CURVES

MAXIMUM SWITCHING POWER



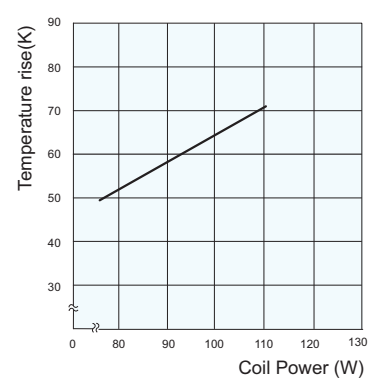
ENDURANCE CURVE



Test conditions:

NO: Resistive load, Room temp.,
flux proofed, 15A 120VAC, 1s on 9s off
NC: Resistive load, Room temp.,
flux proofed, 10A 120VAC, 1s on 9s off

COIL TEMPERATURE RISE



Testing conditions: 10A at 70°C.
Mounting distance: 25mm

Disclaimer

The specification is for reference only. See to "Terminology and Guidelines" for more information. Specifications subject to change without notice. We could not evaluate all the performance and all the parameters for every possible application. Thus the user should be in a right position to choose the suitable product for their own application. If there is any query, please contact Hongfa for the technical service. However, it is the user's responsibility to determine which product should be used only.

© Xiamen Hongfa Electroacoustic Co., Ltd. All rights of Hongfa are reserved.