

HFE85P-150

DIRECT CURRENT RELAY



File No.: E133481



File No.: AN50674208



File No.:
2024010304681545

RoHS compliant



Features

- Hermetically sealed with ceramic brazing technology, without risk of arc leaking, no fire or explosion.
- Filled with hydrogen gas to prevent oxidation and burn out of contacts; Low and stable contact resistance, contact block with IP67 compliant
- 150A continuous carry current capability at 85°C.
- Max. insulation resistance up to 1000MΩ (1000 VDC), dielectric strength (between contact and coil) up to 3.3kVAC, IEC60664-1 compliant.
- The load and coil drive have polarity requirement.
- Applied to the energy storage, safety conformity of ≤1500V

CONTACT DATA

Contact arrangement	1 Form A
Contact resistance ¹⁾	≤0.15mΩ(at 150A)
Contact rating	150A
Mechanical endurance	2 x 10 ⁵ ops(0.5s on:0.5s off)
Max. switching voltage	1500 VDC
Max. breaking current	1000A 1 op
Electrical endurance ²⁾	Making:7.5×10 ⁴ ops(37.5VDC Inrush current:150A,RC=1ms)
	Switching:6000 ops (70A 1000VDC) ³⁾
	Switching:6000 ops(60A 1500VDC) ³⁾
	Breaking:3000 ops(150A 450VDC)
	Breaking:1500 ops(150A 750VDC)
Current carrying ⁴⁾ endurance	150A: Cont.
	200A: 600s
	300A: 60s
	1200A: 1s

Notes: 1) The above values are the initial values.

2) Unless otherwise specified, the temperature of electrical endurance is at 23°C and the on-off ratio is 0.6s:5.4s.

The energy-saving board is built in the relay. The coil will switch after 0.2 seconds of driving. However, repeated on-off operations within 0.2 seconds may cause failure. Products with built-in circuit boards cannot be driven by slow rising voltage. Please use fast rising edge (step power supply method) to drive the coil, otherwise it will not work!

3) Load condition for UL certified.

4) Ambient temperature is at 85°C and cross-sectional area of conductor is 50mm² min. See Fig. Endurance Capacity Curve for more information.

AUXILIARY CONTACT

Contact arrangement	1 Form A
Contact resistance ¹⁾	≤100mΩ(at 1A)
Contact rating	6VDC 0.1A
Min. contact load	6VDC 3mA

COIL

23°C

Rated Voltage VDC	Pick-up Voltage VDC	Drop-out Voltage VDC	Coil power W
12	≤9.6	≥4.5	Start-up:26W Holding:3W
24			

CHARACTERISTICS

Insulation resistance		1000MΩ(1000 VDC)
Dielectric strength	Between contact and coil	3300 VAC 1min
	Between open contacts	3300 VAC 1min
	Between main & auxiliary contacts	3300 VAC 1min
Operate time (at rated volt.)		≤35ms
Release time (at rated volt.)		≤10ms
Shock resistance	Functional	98m/s ²
	Destructive	490m/s ²
Vibration resistance		10Hz ~ 55Hz
Humidity		5% ~ 85% RH
Ambient temperature		-40°C ~ 85°C
Load terminal structure		M6 internal thread
Unit weight		Approx. 400g
Outline Dimensions		See“outline dimensions”

Note:The above values are the initial values measured at room temperature.



HONGFA RELAY

ISO9001、IATF16949、ISO14001、ISO45001、IECQ QC 080000、ISO/EC 27001 CERTIFIED 2026 Rev. 1.00

ORDERING INFORMATION

Type	HFE85	P-	150	/XXX	-XX	-H	A	L	5	P	-5	(XXX)
Application	P: PV and energy storage											
Contact rating	150: 150A											
Load voltage	Nil: 450 VDC 1000: 1000 VDC 1500: 1500 VDC											
Coil voltage	12: 12 VDC 24: 24 VDC											
Contact arrangement	H: 1 Form A											
Aux. contact arrangement	A: 1 Form A											
Coil terminal arrangement	L: Wire											
Load terminal arrangement	5: Internal thread											
Coil power	P: Energy-saving type											
Coil characteristic	5: Single coil with PWM economizer											
Special code ¹⁾	XXX: Customer requirement(used when customers have special requirements)											

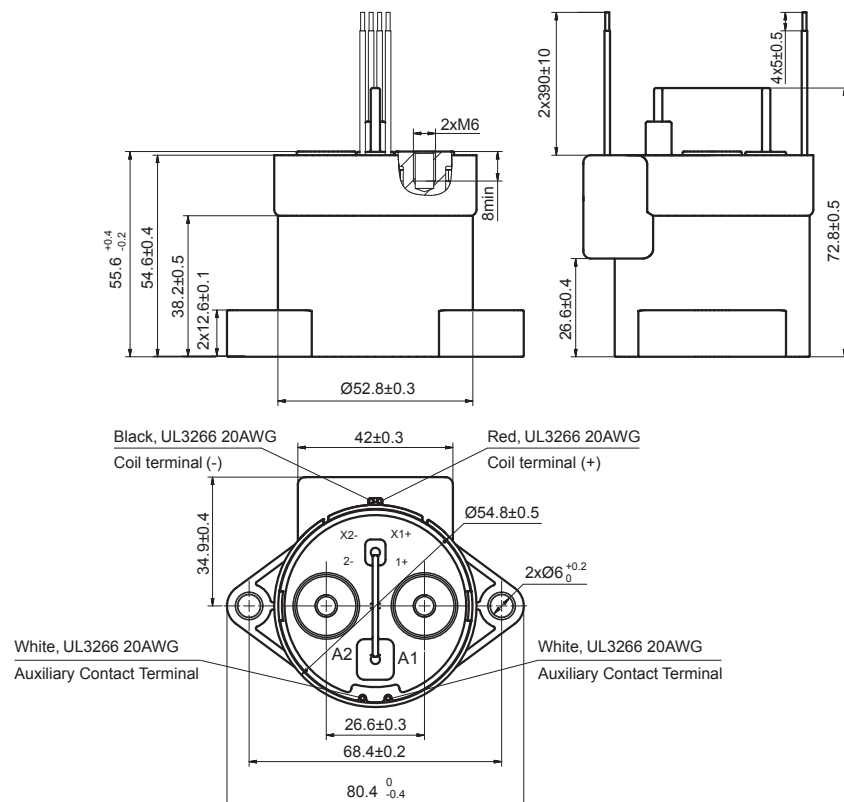
Note: 1) The customer's special requirement is expressed as a special code after evaluation by Hongfa.

OUTLINE DIMENSIONS, MOUNTING HOLE, WIRING DIAGRAM

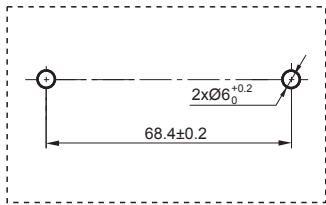
Unit: mm

Outline Dimensions

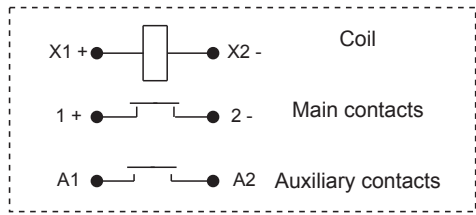
HFE85P-150/XXXX-XX-HAL5P-5



Mounting Hole



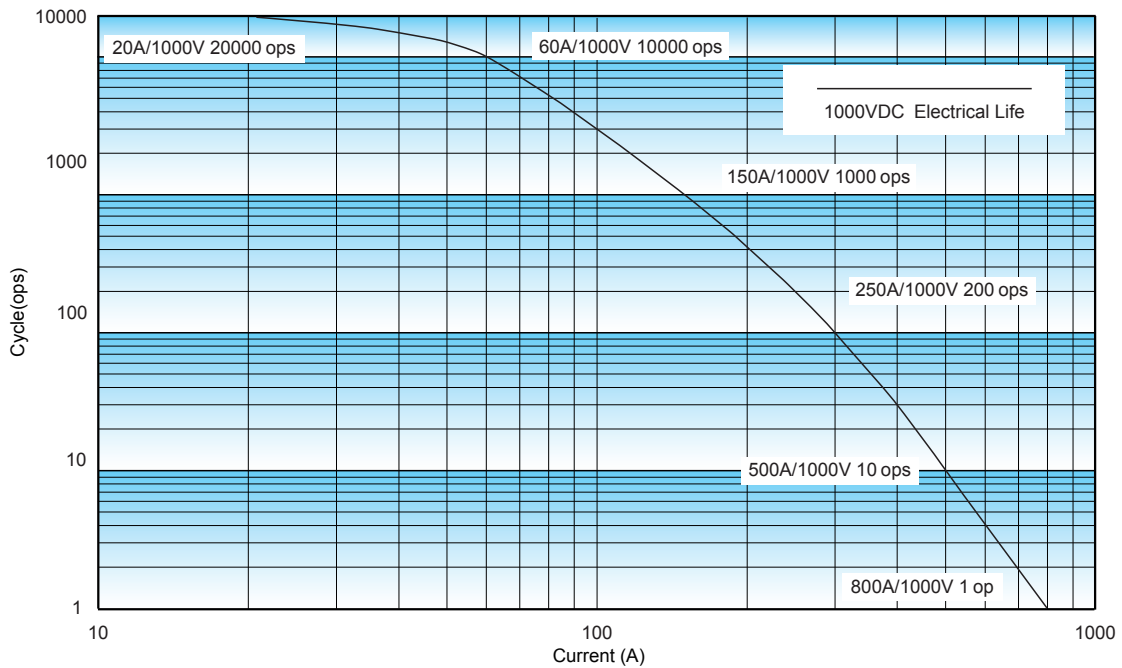
Wiring Diagram



Note: Both the load and the coil have polarity; auxiliary contacts have no polarity.

CHARACTERISTIC CURVES

Breaking Capability Curve (Resistive Load)

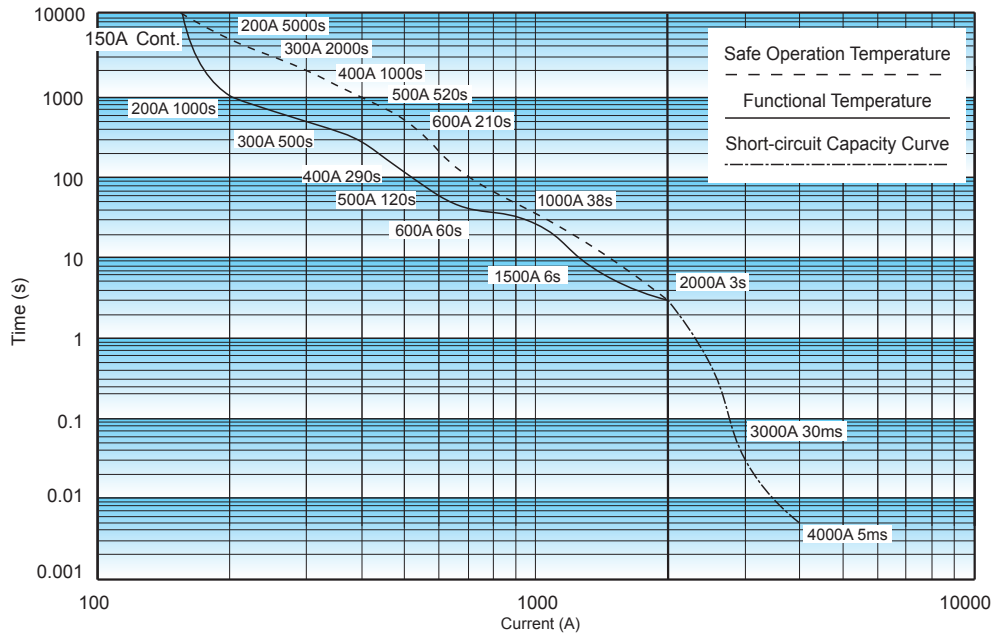


Notes:

1. The data is for reference only.
2. Conductor cross-sectional area $\geq 50\text{mm}^2$.
3. The data is measured under the resistive load ($L/R \leq 1\text{ms}$), the duty cycle: 0.6s on: 5.4s off, ambient temperature: 23°C .
The values may change according to the load type, duty cycle, and environmental conditions. therefore, it is recommended to confirm the values under actual load.
4. The curve is based on the standard relay measurement data. It is necessary to consider system voltage, electromagnetic compatibility of the copper busbar, the influence of installation stress when designing the system. If you have any questions, please contact hongfa technology team.

CHARACTERISTIC CURVES

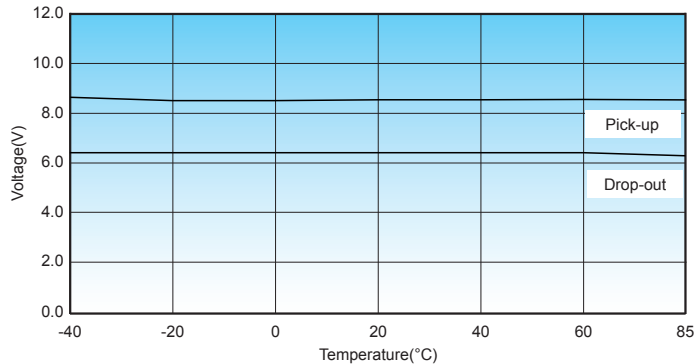
Endurance Capacity Curve



Notes:

1. The data is for design reference, it shall be verified as actual for model selection and fuse mating of short-circuit current test.
- 2.1. The upper limit of the safe operation temperature set by this curve is 180 °C with the load voltage of 5 Vd.c., and the upper limit of the functional temperature is 130 °C; The long-term service temperature of the material is 130 °C, the short-term service temperature of the material after aging is 180 °C;
- 2.2. It is recommended that the upper temperature limit shall not exceed 130 °C when long time operation. It may also cause relay failure, if the safe temperature limit of 180 °C is exceeded;
- 2.3. There is a risk of fire and explosion in conditions beyond the safety curve. In case of similar conditions, the relay shall be replaced in time;
- 2.4. The ambient temperature is 85 °C for safe operation and function, and for current above 2000A, the temperature is room temperature with cross-sectional area ≥50mm².
- 3.1. Even if it is below the safety curve when the current ≥ 2000A, the relay is likely to be stuck during current carrying. If there is a break beyond the specification, fire and explosion may occur;
- 3.2. The contact is likely to bounce off when the current ≥ 3000A. If the fuse cannot be fused in time, the relay may explode and may be ignited if the arc continues to burn after the explosion.
4. The curve is the measured data of standard relays. System voltage, electromagnetic compatibility and installation stress of copper busbar should be taken into consideration in system design. If any questions, please contact with our technical support for further consultation.

Pick-up Voltage / Drop-out Voltage Curve



Notes:

1. The above values are sampling values for reference only.
2. The rated voltage of the sample coil is 12VDC.
3. The sampling ambient temperature is -40°C~85°C.
4. The curve is based on the standard relay measurement data. It is necessary to consider system voltage, electromagnetic compatibility of the copper busbar, the influence of installation stress when designing the system. If you have any questions, please contact hongfa technology team.

CAUTIONS

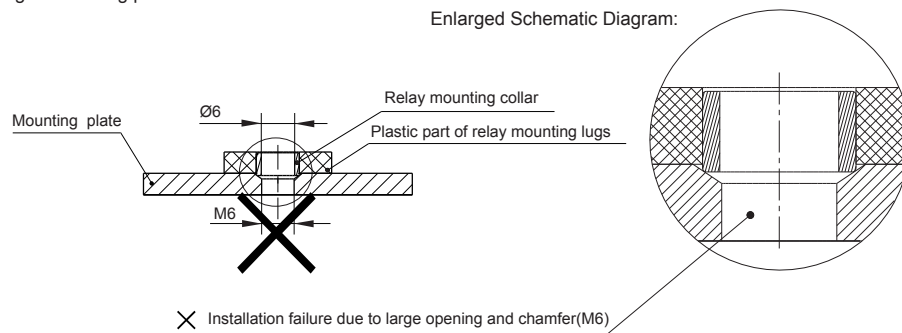
1. In case of looseness, please use collars when mounting the relay. The torque beyond the range may cause damage.

Mounting for load terminal				Mounting for relay body	
Mounting way	Torque requirement	Hole dia. of copper bus bar	Thickness of copper bus bar	Mounting way	Torque requirement
M6 Screw	6N·m ~ 8N·m	Ø6.5mm~Ø7.0mm	3mm	M5 Screw	3N·m ~ 4N·m

- When use M6 screw, the thickness and strength of the washer needs to be guaranteed or it may deform and burst the housing.
- Please tighten the load terminal of relay vertically with preloading first when installing. Repeat locking is not recommended.
- If any special screws and nuts, such as nylok, are used when installing, it is recommended to contact and confirm with Hongfa.
- If any special installation requirements, such as a downward direction, multi busbar connection, are involved, it is recommended to contact and confirm with Hongfa.
- Please avoid adhering to foreign matter such as grease on the terminal lead end and please use the conductor with min. cross-sectional area of 50mm², otherwise it may cause the abnormal heating of the terminal part.
- It is recommended that the copper busbar has a thickness of 3mm; otherwise, it will cause problems such as thread stripping or loose installation.
- Caution of mounting for relay body:

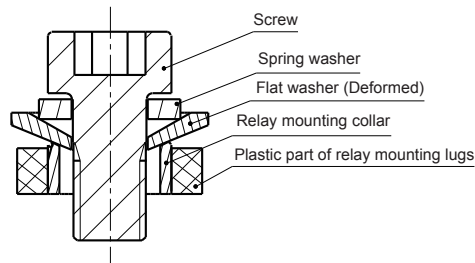
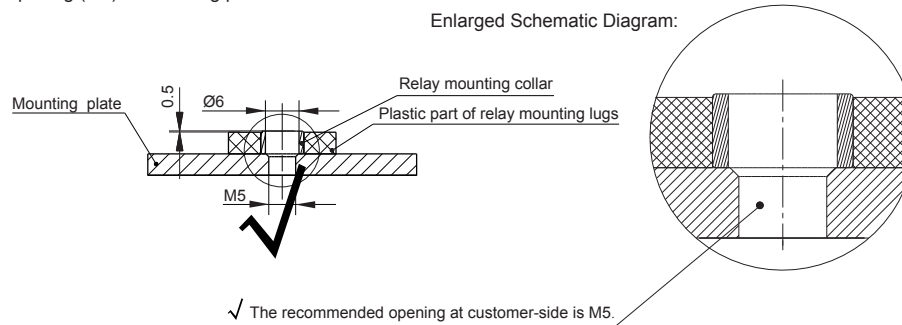
Unrecommended method

Large opening of mounting plate at customer-side.



Recommended method

Appropriate opening (M5) of mounting plate at customer-side.



When use M5 screw, the thickness and strength of the washer needs to be guaranteed or it may deform and burst the cover.

Disclaimer

The specification is for reference only. See to "Terminology and Guidelines" for more information. Specifications subject to change without notice. We could not evaluate all the performance and all the parameters for every possible application. Thus the user should be in a right position to choose the suitable product for their own application. If there is any query, please contact Hongfa for the technical service. However, it is the user's responsibility to determine which product should be used only.

© Xiamen Hongfa Electroacoustic Co.,Ltd. All rights of Hongfa are reserved.