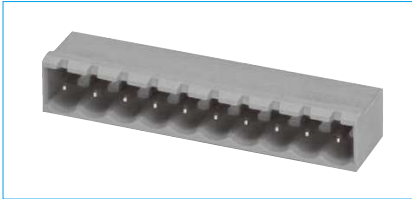


HFLS1D10-508

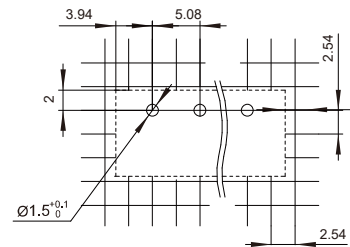
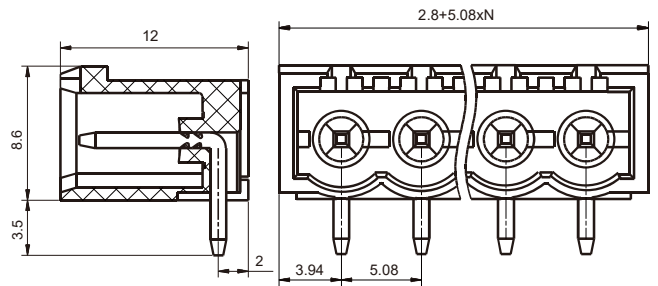
Plug-in terminal block



DIMENSIONAL DRAWING

OUTLINE DIMENSIONS, WIRING DIAGRAM

Unit:mm



FEATURES

- Standard needle type connector
- the plug-in direction of is parallel to PCB

SPECIFICATION

Load	15A 300V (ULstandard) 12A 250V (IEC standard)
Poles	2~16
Pitch	5.08mm
Rated Dielectric Strength	2200Vac/min
Rated Withstand Pulse Voltage	4kV
Ambient Temperature	-40℃~105℃

- Remark: 1) In case of no tolerance shown in outline dimension: outline dimension $\leq 1\text{mm}$, tolerance should be $\pm 0.2\text{mm}$; outline dimension $> 1\text{mm}$ and $\leq 5\text{mm}$, tolerance, should be $\pm 0.3\text{mm}$; outline dimension $> 5\text{mm}$, tolerance should be $\pm 0.4\text{mm}$.
- 2) The tolerance without indicating for PCB layout is always $\pm 0.1\text{mm}$.

ORDERING DATA

TYPE	POLES	PCS/BOX
HFLS1D10-508/S2-GN	2	330
HFLS1D10-508/S3-GN	3	230
HFLS1D10-508/S4-GN	4	180
HFLS1D10-508/S5-GN	5	150
HFLS1D10-508/S6-GN	6	130
HFLS1D10-508/S7-GN	7	110
HFLS1D10-508/S8-GN	8	100
HFLS1D10-508/S9-GN	9	90
HFLS1D10-508/S10-GN	10	80
HFLS1D10-508/S11-GN	11	70
HFLS1D10-508/S12-GN	12	70
HFLS1D10-508/S13-GN	13	60
HFLS1D10-508/S14-GN	14	60
HFLS1D10-508/S15-GN	15	50
HFLS1D10-508/S16-GN	16	50

Disclaimer:

The specification is for reference only. See to "Terminology and Guidelines" for more information. Specifications subject to change without notice.
We could not evaluate all the performance and all the parameters for every possible application. Thus the user should be in a right position to choose the suitable product for their own application. If there is any query, please contact Hongfa for the technical service. However, it is the user's responsibility to determine which product should be used only.

@ Xiamen Hongfa Electroacoustic Co., Ltd. All rights of Hongfa are reserved.