

HFE82V-500M

DIRECT CURRENT RELAY



Features

- Hermetically sealed with ceramic brazing technology, without risk of arc leaking, no fire or explosion.
- Filled with hydrogen gas to prevent the oxidation and burnout of contacts; Low and stable contact resistance, with IP67 compliant.
- 500A continuous carry current capability at 85°C.
- Max. insulation resistance up to 1000MΩ (@1000 VDC), dielectric strength (coil-contact) up to 4kV, IEC 60664-1 compliant.

RoHS compliant

CONTACT DATA

Contact arrangement	1 Form A
Contact resistance ¹⁾	≤0.15 mΩ(200A)
Contact rating	500A
Mechanical endurance	2 x 10 ⁵ ops
Max. switching voltage	1000 VDC
Max. breaking current	1500A(1000 VDC) 1 op
Max. switching power	1000kW

Type 800V

Electrical endurance ²⁾	Breaking:1000 ops(800VDC 200A)
	Breaking:350 ops(800VDC 300A)
	Breaking:200 ops(800VDC 400A)
	Breaking:100 ops(800VDC 500A)
	Breaking:1 op(800VDC 2000A)

Type 1000V

Electrical endurance ²⁾	Breaking:500 ops(1000VDC 200A)
	Breaking:200 ops(1000VDC 300A)
	Breaking:100 ops(1000VDC 400A)
	Breaking:50 ops(1000VDC 500A)
	Breaking:1 op(1000VDC 1500A)

Current carrying ³⁾ capacity	500A: Cont.
	600A: 1200s
	750A: 900s
	850A: 200s
	1000A: 60s

Notes: 1) The above values are the initial values.

2) Unless otherwise specified, the temperature of electrical endurance is at 23°C and the on-off ratio is 0.6s:5.4s.
The coil was not connected to the surge suppression device during the test. Please note that the use of a well-connected diode will greatly increase the release time of the relay, resulting in a reduced lifetime.

3) Ambient temperature is at 85°C and cross section area of wire is 200mm² min. See Fig. Endurance Capacity Curve for more information.

AUX CONTACT DATA

Contact arrangement	1 Form B
Contact resistance ¹⁾	≤150mΩ(at 0.1A)
Contact Rating	6VDC 10mA
Min. Applicable Load	6VDC 3mA

COIL

23°C

Rated Voltage VDC	Pick-up Voltage VDC	Drop-out Voltage VDC	Coil power W
12	≤9	≥1	6
24	≤18	≥2	6

CHARACTERISTICS

Insulation resistance		1000MΩ(1000 VDC)
Dielectric strength	Between coil & contacts	4000 VAC 1min
	Between open contacts	4000 VAC 1min
	Between contacts & auxiliary contacts	4000 VAC 1min
Operate time (at rated volt.)		≤50ms
Release time (at rated volt.)		≤10ms
Shock resistance	Functional	Close:98m/s ² Open:196m/s ²
	Destructive	490m/s ²
Vibration resistance		10Hz ~ 500Hz 49m/s ²
Humidity		5% ~ 85% RH
Ambient temperature		-40°C ~ 85°C
Load terminal structure		M8 screw terminal female
Unit weight		Approx.600g
Outline Dimensions		74.0 x 64.2 x 83.5mm

Notes:The above values are the initial values measured at room temperature.



HONGFA RELAY

ISO9001, IATF16949, ISO14001, ISO45001, IECQ QC 080000, ISO/EC 27001 CERTIFIED

2024 Rev.1.00

ORDERING INFORMATION

Type	HFE82	V	-500	M/	750-	12-	H	B	-C	5	-1	(XXX)
Application	V: Vehicle											
Contact rating	500: 500A											
Series breakdown	M: M series											
Load voltage	750: 750VDC 1000: 1000VDC											
Coil voltage	12: 12VDC 24: 24VDC											
Contact arrangement	H: 1 Form A											
Aux Contact type	B: 1 Form B											
Coil terminal structure	C: Connector											
Load terminal structure	5: Screw terminal female											
Coil characteristic	1: Single coil											
Special code ¹⁾	XXX: Customer special requirement											

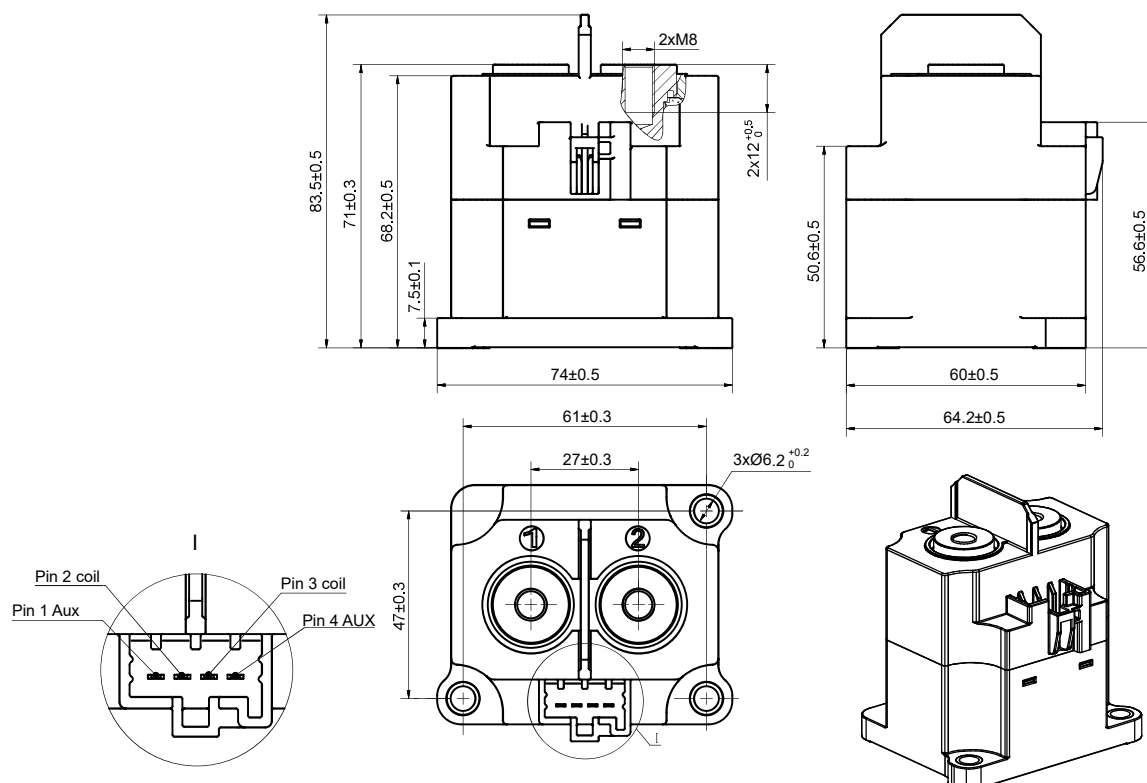
Notes: 1) The customer special requirement express as special code after evaluating by Hongfa.

OUTLINE DIMENSIONS, MOUNTING HOLE, TERMINAL ARRANGEMENT

Unit: mm

Outline Dimensions

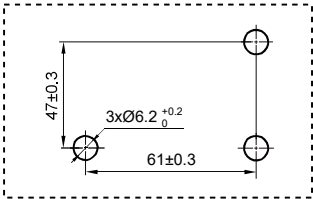
HFE82V-500M/XXX-XX-HB-C5-1



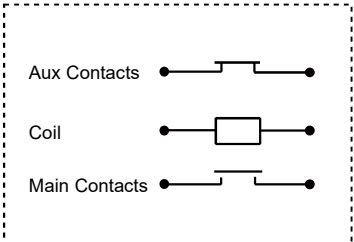
OUTLINE DIMENSIONS, MOUNTING HOLE, TERMINAL ARRANGEMENT

Unit: mm

Mounting Hole



Terminal Arrangement



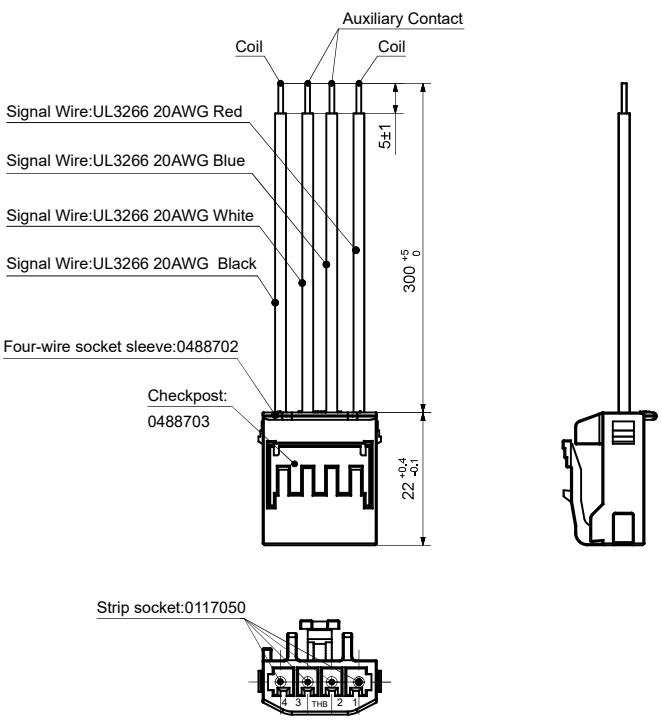
Notes:Coil, main contacts and auxiliary contact are non-polarity

WIRING DIAGRAM

Unit: mm

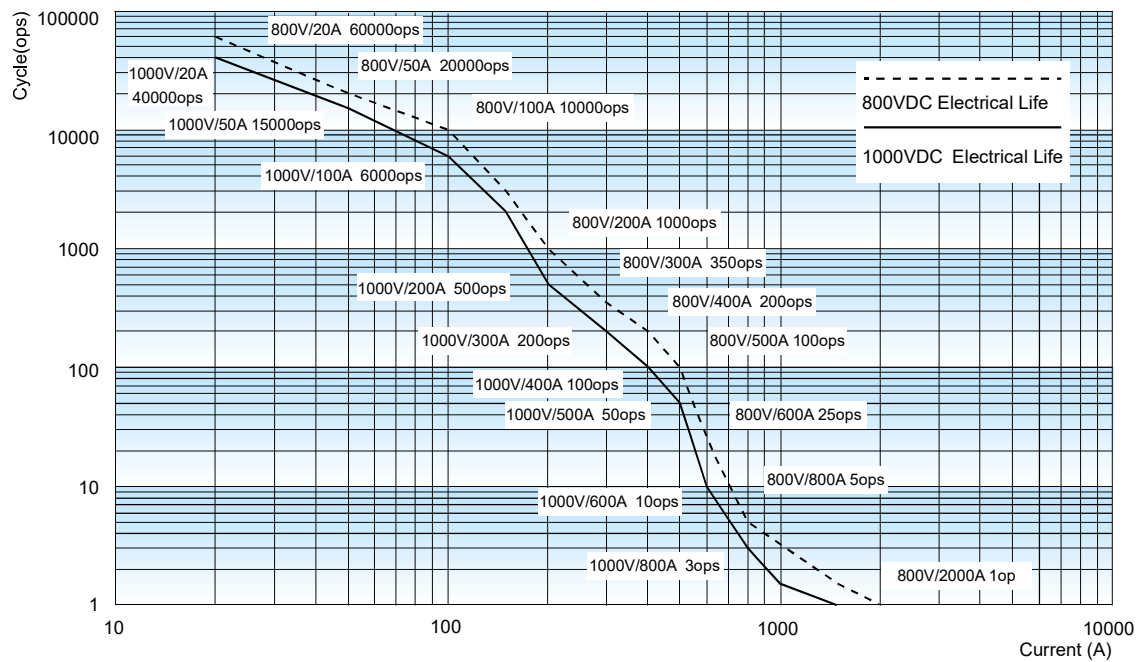
C:Connector

(Configured by customers: Tianhai: 0488701)



CHARACTERISTIC CURVES

Breaking Capability Curve (Resistive Load)

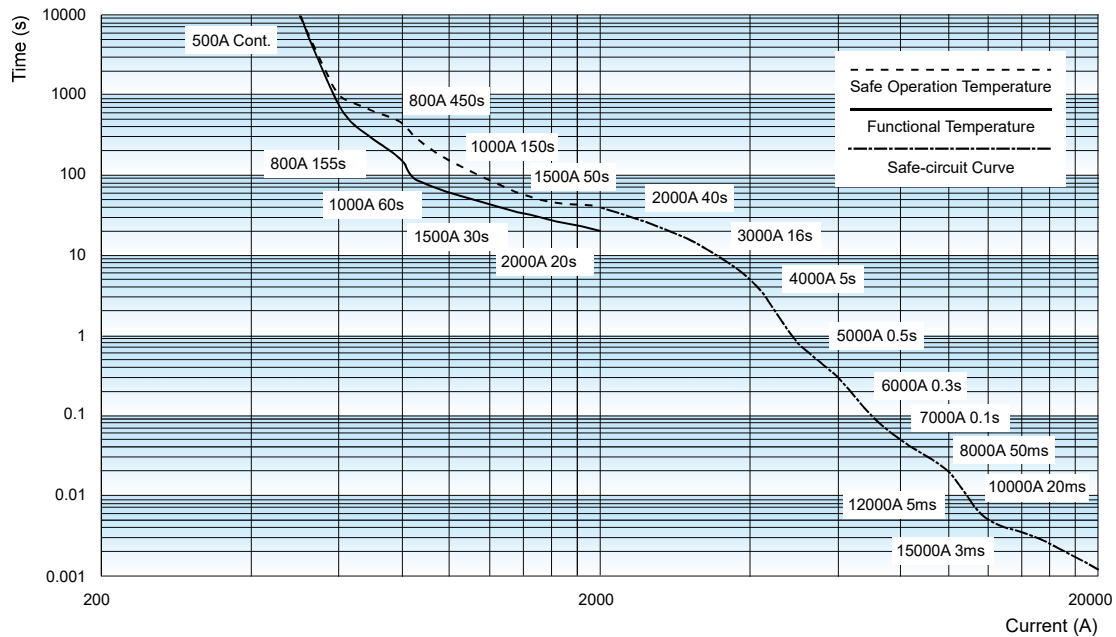


Notes:

- 1). The data is for reference only.
- 2). Cable cross section: $\geq 200\text{mm}^2$.
- 3). The data is measured under the resistive load ($L/R \leq 1\text{ms}$), the duty cycle: 0.6s on: 5.4s off, ambient temperature: 23°C ;
The values may change according to the load type, duty cycle, and environmental conditions. therefore, it is recommended to confirm the values under actual load.

CHARACTERISTIC CURVES

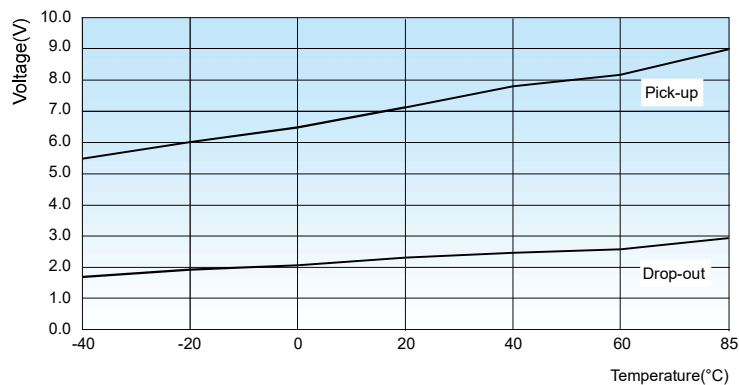
Endurance Capacity Curve



Notes:

- 1) The data is for design reference, it shall be verified as actual for model selection and fuse mating of short-circuit current test.
- 2) The upper temperature limit of safe operation and function are set for 180°C and 130°C respectively.
- 3) It is recommended that the upper temperature limit shall not exceed 130°C when long time operation. The relay may also fail, if the safe temperature limit of 180°C is exceeded.
- 4) Risks of fire and explosion may exist when the working condition beyond the safe circuit curve. In case of similar working condition, the relay shall be replaced in time.
- 5) The ambient temperature is 85°C for safe operation and function, and for current above 2000A, the temperature is room temperature with cross-sectional area $\geq 200\text{mm}^2$.
- 6) Even if it is below the safety curve when the current $\geq 2000\text{A}$, the relay is likely to be bonded during current carrying. If there is a break beyond the specification, fire and explosion may occur.
- 7) The contact is likely to bounce off when the current $\geq 3000\text{A}$. If the fuse cannot be fused in time, the relay may explode and may be ignited if the arc continues to burn after the explosion.
- 8) The contact will severely bounce off when the current $\geq 5000\text{A}$, which may cause the circuit current cannot continue to rise. If the fuse cannot be fused in time, the relay may explode and the arc may ignite the relay after the explosion.

Pick-up Voltage / Drop-out Voltage Curve



- Notes:**
- 1) The above values are sampling values for reference only;
 - 2) The rated voltage of the sample coil is 12VDC;
 - 3) The sampling ambient temperature is -40°C ~ 85°C.

CAUTIONS

1. In case of looseness, please use washer when install the relaywith M5 screw, and the torque within 3N.m to 4N.m, The screw tightening torque at terminals shall be within 8N.m to 10N.m. The torque beyond the range may cause damage.

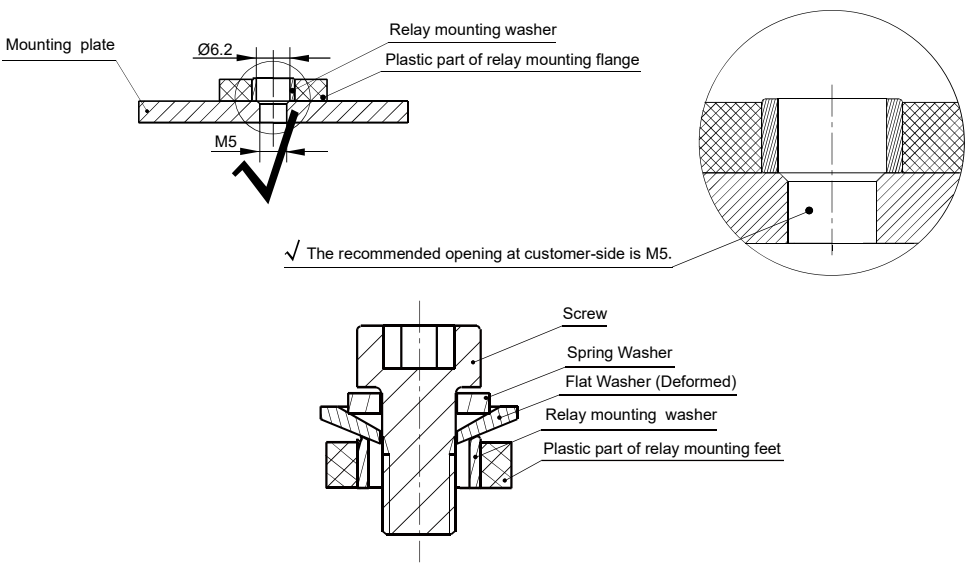
Mounting for load terminal				Mounting for relay body	
Mounting way	Torque requirement	Hole dia. of copper bus bar	Thickness of copper bus bar	Mounting way	Torque requirement
M8 Screw	8N.m ~ 10N.m	Ø8.8mm ~ Ø9.2mm	6mm	M5 Screw	3N.m ~ 4N.m

2. Please tighten the load terminal of relay vertically with preloading first when installing. Repeat locking is not recommended.
3. If any special screws and nuts, such as nylok, are used when installing, it is recommended to contact and confirm with Hongfa.
4. If any special installation requirements,such as downward direction,multi busbar connection, are involved, it is recommended to contact and confirm with Hongfa.
5. Please avoid adhering to foreign matter such as grease on the terminal lead end and please use the conductor with min. cross section area of 200mm², otherwise it may cause the abnormal heating of the terminal part.
6. Cautions of mounting for relay body:

Recommended method

Appropriate opening (M5) of mounting plate at customer-side.

Enlarged Schematic Diagram:



When use M5 screw, the thickness and strength of the washer needs to be guaranteed or it may deform and burst the cover.

Disclaimer

The specification is for reference only. See to "Terminology and Guidelines" for more information. Specifications subject to change without notice. We could not evaluate all the performance and all the parameters for every possible application. Thus the user should be in a right position to choose the suitable product for their own application. If there is any query, please contact Hongfa for the technical service. However, it is the user's responsibility to determine which product should be used only.

© Xiamen Hongfa Electroacoustic Co.,Ltd. All rights of Hongfa are reserved.