

PHSMP series

RF Coaxial Connector

FEATURES

- High transmission power
- Excellent mechanical and electrical performance, high reliability
- Used in Board-to-board high power signaling between amplifiers and filters.

TECHNICAL PARAMETER

Ambient temperature: $-55^{\circ}\text{C} \sim +155^{\circ}\text{C}$

Impedance: 50Ω

Frequency: DC~6GHz

VSWR: ≤ 1.25 (DC ~ 3GHz), ≤ 1.35 (3GHz ~ 6GHz)

Radio-frequency power:

$>230\text{W}@2.7\text{GHz}\&105^{\circ}\text{C}$

Insulation resistance: $\geq 5000\text{M}\Omega$

Dielectric strength: 1000V(rms)

Contact resistance:

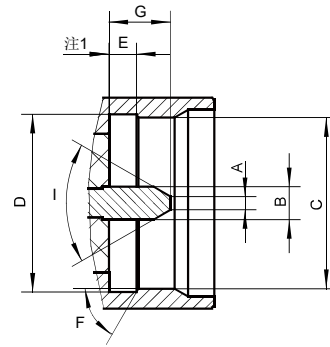
Center contact $\leq 4\text{m}\Omega$

Outer contact $\leq 3\text{m}\Omega$

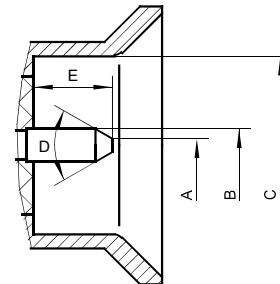
Mechanical endurance: ≥ 100 ops



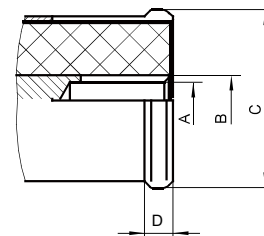
INTERFACE DIMENSIONS



Limiter detent Male connector



Slide male connector



Female connector

Limiter detent Male connector

No.	Min(mm)	Max(mm)
A	0.5	0.7
B	1.43	1.47
C	8.08	8.12
D	8.22	8.26
E	1.1	1.14
F	50	60
G	3.0	3.2
I	55	65

Slide male connector

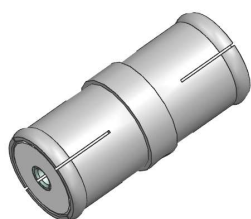
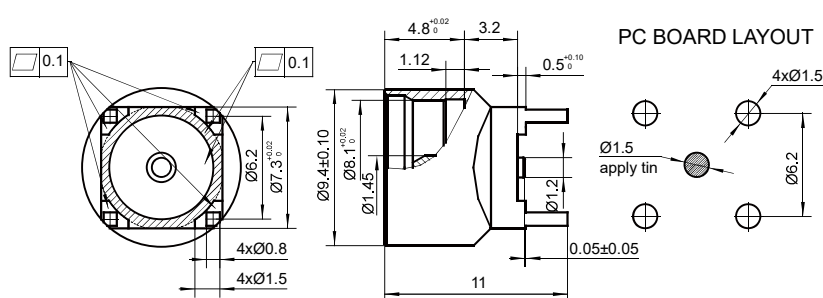
No.	Min(mm)	Max(mm)
A	0.5	0.7
B	1.43	1.47
C	8.22	8.26
D	55	65
E	3.9	4.1

Female connector

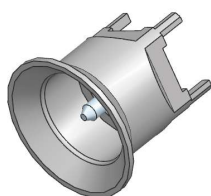
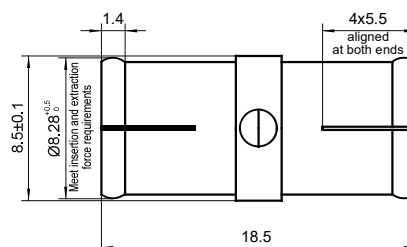
No.	Min(mm)	Max(mm)
A	Meet insertion and extraction force requirements	
B	2.28	2.32
C	8.27	8.33
D	1.38	1.42



PHSMP-JHEL



PHSMP-KK18.5



PHSMP-JHES

