

HSMP3 series

RF Coaxial Connector

FEATURES

- Belonging to the SMP connector family series products
- High frequency transmission, low loss, high stability
- Used in high-frequency signal transmission, etc.

TECHNICAL PARAMETER

Ambient temperature: $-40^{\circ}\text{C} \sim +165^{\circ}\text{C}$

Impedance: 50Ω

Frequency: DC~6GHz

VSWR: ≤ 1.40 (DC ~ 7.5GHz), ≤ 1.60 (7.5GHz ~ 9GHz)

Radio-frequency power:

$>110\text{W}@2.7\text{GHz}\&85^{\circ}\text{C}$ (Average power)

Insertion loss: $\leq 0.15\sqrt{F}(\text{GHz})\text{dB}$

Radial misalignment: $\pm 3^{\circ}$

Axial misalignment : $\pm 1.0\text{mm}$

Mechanical endurance: 100 OPS

Insulation resistance: $\geq 5000\text{M}\Omega$

Dielectric strength: $1000\text{V}(\text{rms})$

3rd PIM : $-120\text{dBc}@2*20\text{W} \& 1800\text{MHz}$

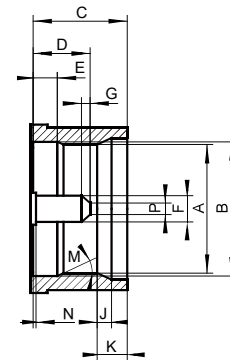
$-155\text{dBc}@2*20\text{W} \& 1800\text{MHz}$ (customizable)

Insertion force: $<30\text{N}$ (Locking end), $<14\text{N}$ (Sliding end)

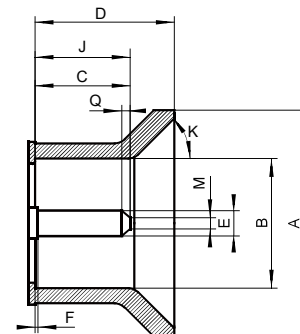
Holding force: $7\text{N}\sim 30\text{N}$ (Locking end), $<5\text{N}$ (Sliding end)



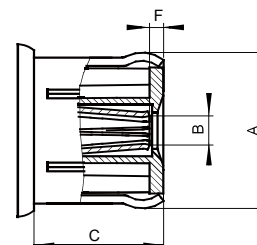
INTERFACE DIMENSIONS



Limiter detent Male connector



Slide male connector



Female connector

Limiter detent Male connector

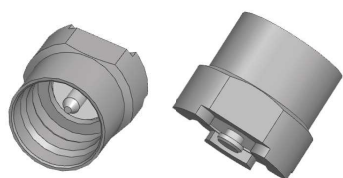
No.	Min(mm)	Max(mm)
A	4.31	4.39
B	3.82	3.9
C	3.73	3.77
D	3	3.1
H	1.42	1.48
J	0.55	0.6
K	-	0.5
N	-	0.15
S	0.3	0.35
U	0.76	0.8
V	1.5	1.7

Slide male connector

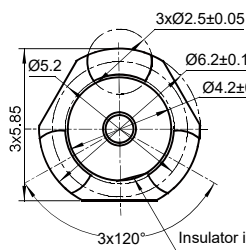
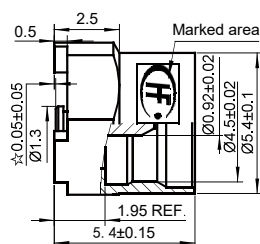
No.	Min(mm)	Max(mm)
A	3.82	3.9
B	2.52	2.58
C	3.17	-
D	0.25	0.5
N	-	0.15
S	0.3	0.35
U	0.76	0.8
V	2.9	3.16

Female connector

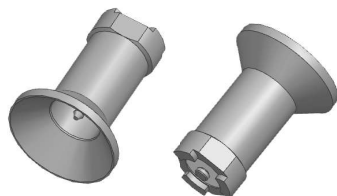
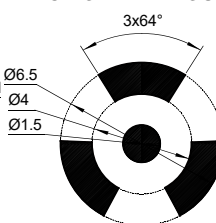
No.	Min(mm)	Max(mm)
A	-	-
B	3.2	3.3
C	1.42	1.5
D	-	-
E	-	0.55
G	0.2	0.25
H	2.45	2.55
J	3.4	3.5
K	1.3	1.4
M	0	0.15



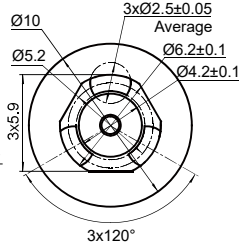
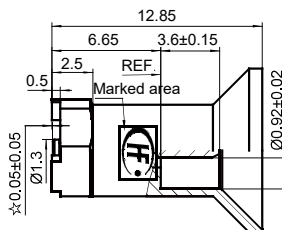
HSMP3-JHEL



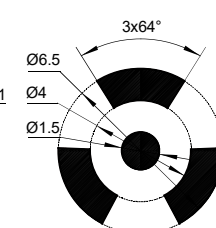
PC BOARD LAYOUT



HSMP3-JHES



PC BOARD LAYOUT



HSMP3-KK15.6

