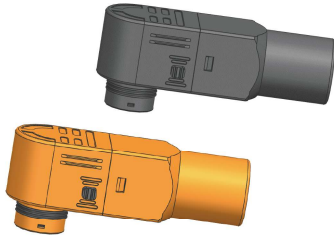


HFLPC2-C

POWER CONNECTOR PLUG



Features

- The contacts are made of copper with a multi-contact crown spring structure, which combines the current-carrying capacity of copper with the multi-contact crown spring, significantly increasing the current-carrying capacity
- Reliable connection, soft plugging and unplugging, low contact resistance, high current-carrying density, long service life and so on
- With the key anti-fault, positive and negative color anti-fault, 360° rotary insertion, a variety of connection methods and other functions
- For connection between energy storage PACKs and to inverters
- Mating With: HFLPC2-C Power connector receptacle

RoHS compliant

ELECTRICAL DATA

| | |
|-----------------------|--|
| Rated Voltage | 1500V |
| Rated current | 250A(70mm ²), 300A(95mm ²) |
| Voltage Proof | 6800VAC |
| Contact Resistance | ≤ 0.3mΩ |
| Insulation Resistance | ≥5000MΩ |

Notes: 1) The data shown above are initial values.

STORAGE REQUIREMENT

| | |
|-------------------------|---|
| Environment temperature | -10°C to +40°C |
| Humidity | 80% Max |
| Ambient gas | No acidity, No alkalescence and other corrosive gas |
| Stockpile period | Doesn't exceed one year from production date |

Notes: 1) The data shown above are initial values.

CHARACTERISTICS

| | |
|----------------------------|---|
| Temperature Range | -40°C to 125°C |
| Salt Mist | 48h |
| Constant heat and humidity | 40°C, 90% to 95% RH,96h ³⁾ |
| Temperature life | 240 hours at 125±5°C ³⁾ |
| Thermal Shock | -40°C(30 min), +125°C(30 min), 5 times ³⁾ |
| Mechanical Shock | 294m/s ² , the current instantaneous break time ≤ 1μs ²⁾ |
| Vibration | Frequency 10Hz ~ 500Hz,98m/s ² , the current instantaneous break time ≤ 1μs ²⁾ |
| Protection Grade | / |
| Quality | Approx.100g |
| Marking Mode | Laser etching |
| Durability | 100 Times Min |
| Termination | Cable crimping |

Notes: 1) The data shown above are initial values.

- 2) The parts should not be damaged, and the contact resistance should meet the requirements of electrical performance parameters.
3) No physical damage, electrical and mechanical properties meet sequential testing.

ORDERING INFORMATION

| | | | | | | | |
|------------------|---|-----|---|----|---|----|----|
| Type | HFLPC2 | -TW | C | 70 | Y | B1 | -1 |
| Type of Contact | TW: Right Angle Plug | | | | | | |
| Contact Size | C: Ø10.3 | | | | | | |
| Cable size | 70: 70mm ² 95: 95mm ² | | | | | | |
| Termination Form | Y: Crimp | | | | | | |
| Colour&Keyway | B: Black O: Orange 1,2: Keyway | | | | | | |
| Extension No. | 1: Extension No.1 | | | | | | |



HONGFA RELAY

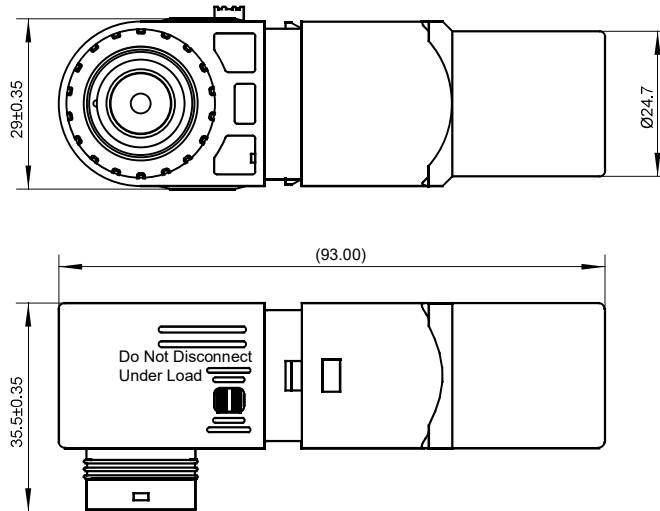
ISO9001, IATF16949, ISO14001, ISO45001, IECQ QC 080000, ISO/IEC 27001 CERTIFIED

2024 Rev. 1.00

OUTLINE DIMENSIONS AND PC BOARD LAYOUT

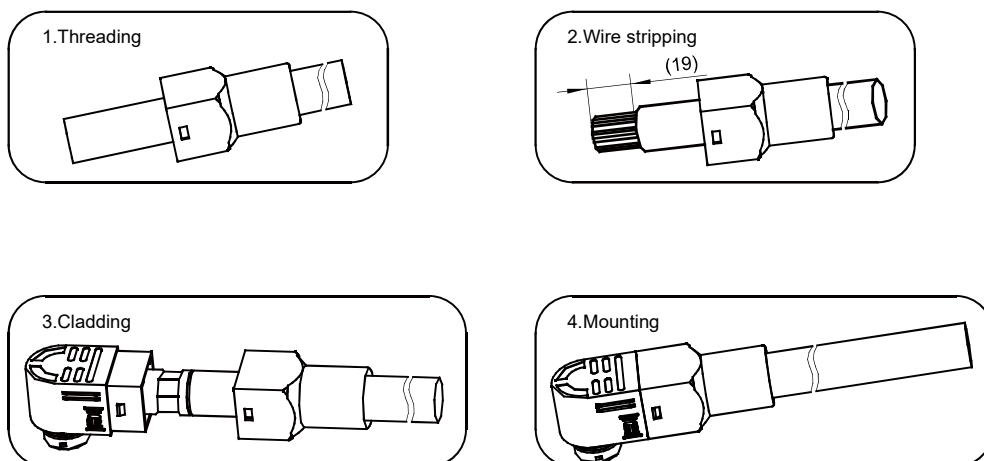
Unit: mm

Outline Dimensions



PRECAUTIONS FOR USE

- Adapter cable: 70mm² cable(outer diameter: $\varnothing 14.5 \sim \varnothing 15.2$); 95mm² cable (outer diameter: $\varnothing 17.5 \sim \varnothing 18.0$) .
- Refer to IPC/WHMA-A-620D for crimp contact crimp reliability.
- Plug assembly procedure is shown below (for reference):



Disclaimer

The specification is for reference only. Specifications subject to change without notice.

We could not evaluate all the performance and all the parameters for every possible application. Thus the user should be in a right position to choose the suitable product for their own application. If there is any query, please contact Hongfa for the technical service. However, it is the user's responsibility to determine which product should be used only.

© Xiamen Hongfa Electroacoustic Co., Ltd. All rights of Hongfa are reserved.