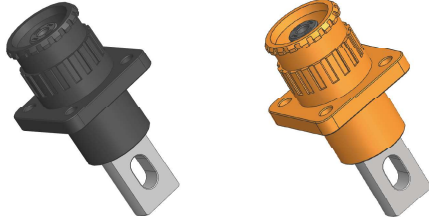


HFLPC2-C

POWER CONNECTOR RECEPTACLE



Features

- The contacts are made of copper with a multi-contact crown spring structure, which combines the current-carrying capacity of copper with the multi-contact crown spring, significantly increasing the current-carrying capacity
- Reliable connection, soft plugging and unplugging, low contact resistance, high current-carrying density, long service life and so on
- With the key anti-fault, positive and negative color anti-fault, 360° rotary insertion, a variety of connection methods and other functions
- For connection between energy storage PACKs and to inverters
- Mating With: Power connector plug

RoHS compliant

ELECTRICAL DATA

Rated Voltage	1500V
Rated current	250A(70mm ²), 300A(95mm ²)
Voltage Proof	6800VAC
Contact Resistance	≤ 0.3mΩ
Insulation Resistance	≥5000MΩ

Notes: 1) The data shown above are initial values.

STORAGE REQUIREMENT

Environment temperature	-10℃ to +40℃
Humidity	80% Max
Ambient gas	No acidity, No alkalescence and other corrosive gas
Stockpile period	Doesn't exceed one year from production date

Notes: 1) The data shown above are initial values.

CHARACTERISTICS

Temperature Range	-40℃ to 125℃
Salt Mist	48h
Constant heat and humidity	40℃, 90% to 95% RH,96h ³⁾
Temperature life	240 hours at 125±5℃ ³⁾
Thermal Shock	-40℃(30 min), +125℃(30 min), 5 times ³⁾
Mechanical Shock	294m/s ² , the current instantaneous break time≤1μs ²⁾
Vibration	Frequency 10Hz ~ 500Hz,98m/s ² , the current instantaneous break time≤1μs ²⁾
Protection Grade	/
Quality	Approx.70g
Marking Mode	Laser etching
Durability	100 Times Min
Termination	Cable crimping: Busbar type, etc.

Notes: 1) The data shown above are initial values.

- 2) The parts should not be damaged, and the contact resistance should meet the requirements of electrical performance parameters.
3) No physical damage, electrical and mechanical properties meet sequential testing.

ORDERING INFORMATION

Type	HFLPC2	-ZF	C	B	B1	-1
Type of Contact	ZF: Female Receptacle					
Contact Size	C: Ø10.3					
Termination Form	B: B Style Y: Y Style L: LStyle T: T Style					
Colour&Keyway	B: Black O: Orange 1,2: Keyway					
Extension No.	1: Extension No.1					

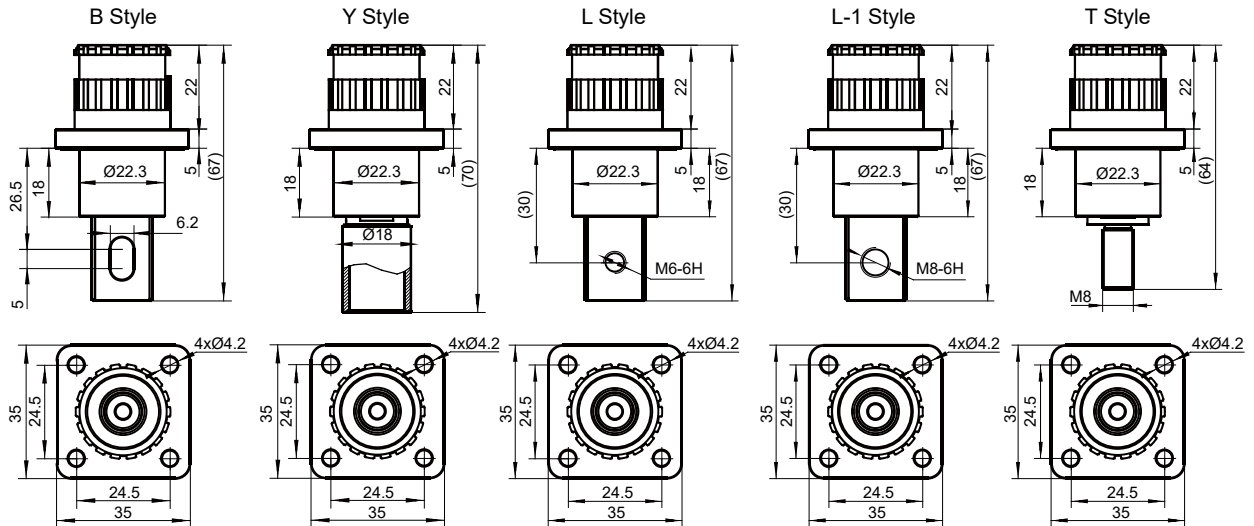


HONGFA RELAY

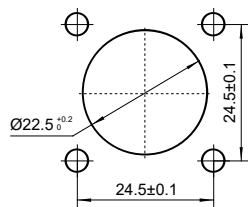
ISO9001, IATF16949, ISO14001, ISO45001, IECQ QC 080000, ISO/IEC 27001 CERTIFIED

2024 Rev. 1.00

Outline Dimensions



PCB Layout (Bottom view)



Disclaimer

The specification is for reference only. Specifications subject to change without notice.

We could not evaluate all the performance and all the parameters for every possible application. Thus the user should be in a right position to choose the suitable product for their own application. If there is any query, please contact Hongfa for the technical service. However, it is the user's responsibility to determine which product should be used only.

© Xiamen Hongfa Electroacoustic Co., Ltd. All rights of Hongfa are reserved.