

FH1187

FUSE HOLDER



Features

- Snap-on knob for quick fuse replacement
- Suitable for Ø5×20mm glass fuses

MATERIALS

Pedestal	不饱和酚醛树脂
lid	聚对苯二甲酸丁二酯
Inner cover	铜合金镀镍
Pin	铜合金镀镍镀锡
Contact plate	铜合金

TECHNICAL PARAMETERS

Rated current	10A 250V
Insulation resistance	100MΩ(500VDC)
Dielectric strength	1000VAC 1min
Contact resistance	5mΩ(6V 1A)
Flame retardant grade	UL94V-0

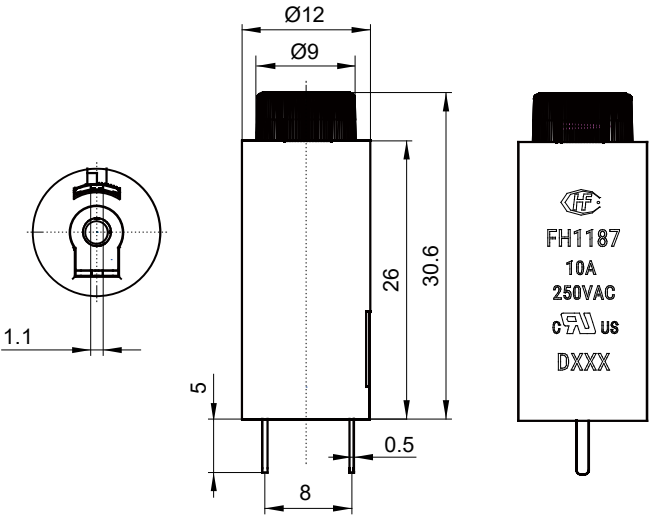
Storage & Packaging

Storage temperature	Storage humidity	Storage term	Packaging
0℃ to 40℃	20% RH to 80%	RH	1 year (unpacked)

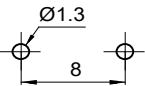
OUTLINE DIMENSIONS, WIRING DIAGRAM AND PC BOARD LAYOUT

Unit: mm

Outline Dimensions



PC Board Layout



Remark: 1) In case of no tolerance shown in outline dimension: outline dimension ≤1mm, tolerance should be ±0.2mm;outline dimension > 1mm and ≤5mm, tolerance should be ±0.3mm; outline dimension >5mm, tolerance should be ±0.4mm.
2) The tolerance without indicating for PCB layout is always ±0.1mm.



HONGFA RELAY

ISO9001,IATF16949,ISO14001,ISO45001,IECQ QC 080000,ISO/EC 27001 CERTIFIED

2024 Rev. 1.00