

L32 series

RF Coaxial Connector

FEATURES

- The L32 bundle connector is an interface connection solution proposed to meet the large-scale application of the TD-LTE system
- 4-channel and 5-channel bundle assembly, It has good phase consistency and can reduce the number of joints and feeders by 80%. Its anti misinsertion structure can greatly improve construction efficiency
- Suitable for installation at the lower port of the bundle antenna, matching with the bundle jumpers of 4 and 5 channels

TECHNICAL PARAMETER

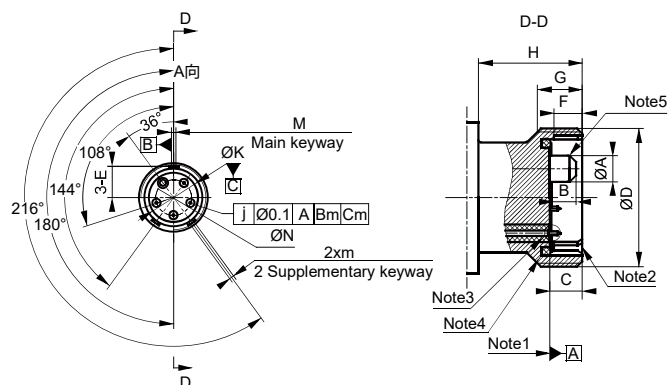
Impedance: 50Ω
 Frequency: DC ~ 3.0GHz
 VSWR: 1.25
 Insulation resistance: $\geq 1000M\Omega$
 Dielectric strength: 750V(rms)
 Contact resistance: Center contact: $\leq 3.0m\Omega$;
 Outer contact: $\leq 2.0m\Omega$
 Mechanical endurance: 200 ops

IMPLEMENTATION CRITERIA

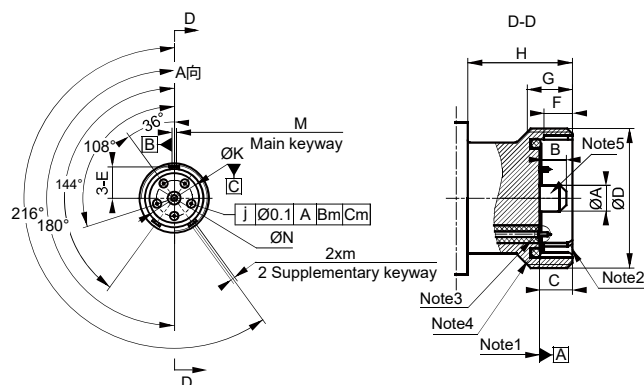
IEC 61169-59



INTERFACE DIMENSIONS



Bundle 4 channels male connector



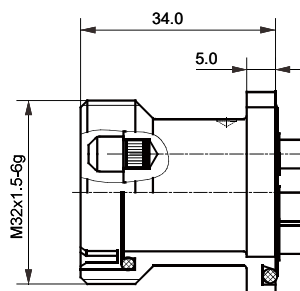
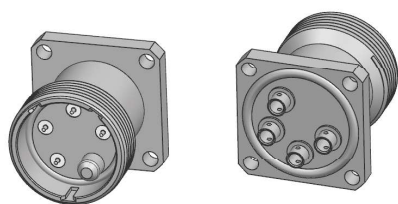
Bundle 5 channels male connector

Bundle 4,5 channels male connector

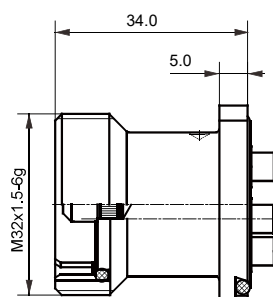
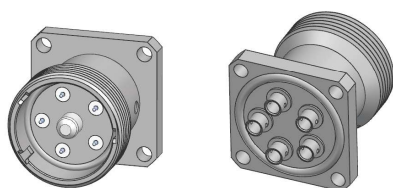
	Min(mm)	Max(mm)
A	6.25	6.35
B	7	
C	7.7	7.8
D	M32x1.5-7H	
E	14.2	14.3
F	7.6	8
G	-	0.8
H	6.8	-
I	0.08	0.3
J	11.5	11.7
K	26.6	26.7
L	34.9	35
M	1.9	2
N	16.5	16.52
P	5.8	6.1

Bundle 4,5 channels female connector

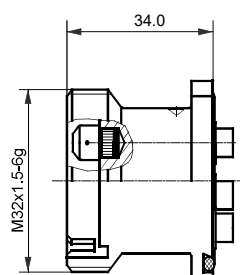
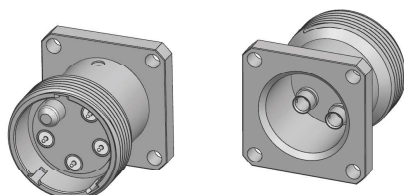
	Min(mm)	Max(mm)
A	6	6.1
B	6	6.2
C	7.5	7.6
D	M32x1.5-6g	
E	14.4	14.5
F	6	-
G	9.5	9.7
H	24	-
K	27	27.1
M	2.1	2.2
N	16.5	16.52



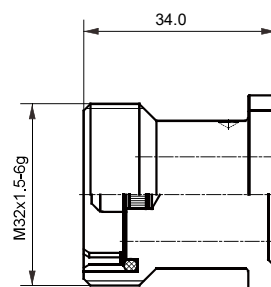
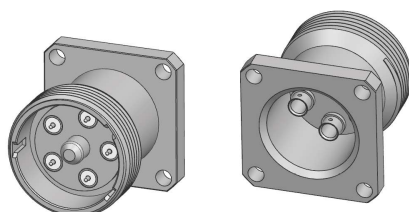
L32-4-JFB3-1



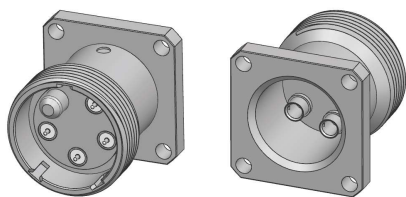
L32-5-JFB3-1



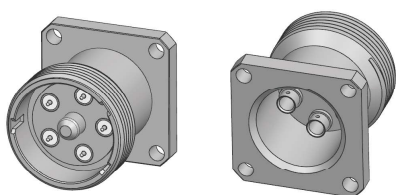
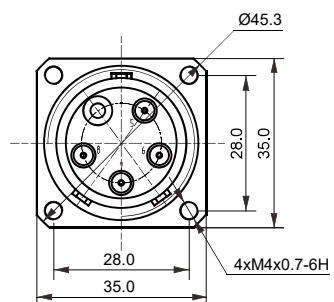
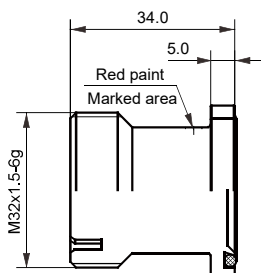
L32-4-JFB3-4



L32-5-JFB3-5



L32-4-JFB3-6



L32-5-JFB3-6

