

SBMA series

RF Coaxial Connector

FEATURES

- A small blind plug connector developed on the basis of BMA products
- Small size, reliable contact, convenient maintenance, and high degree of standardization
- Similar to BMA products, It is suitable for the connection of various microwave circuits, especially for blind insertion of chassis and cabinets, and is conducive to the modularization of complete systems such as radars. It is currently widely used.

TECHNICAL PARAMETER

Temperature: - 65~+125°C

Impedance: 50Ω

Frequency: DC~28GHz

VSWR: $\leq 1.1 + 0.01F$

Insulation resistance: $\geq 5000M\Omega$

Dielectric strength: 675V(rms)

Operating Voltage: 250V (rms)

Contact resistance: Center contact: $\leq 8m\Omega$

Outer contact: $\leq 3m\Omega$

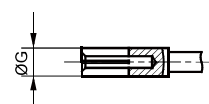
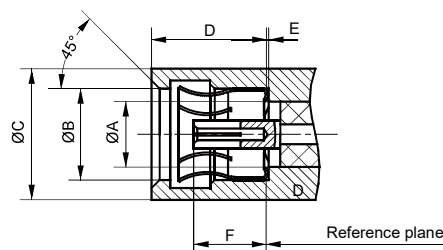
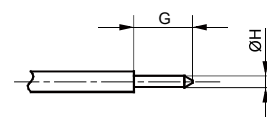
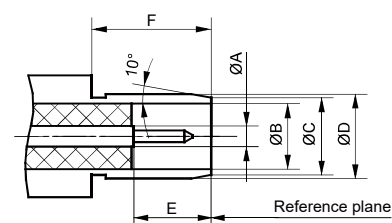
Mechanical endurance: 500 OPS

IMPLEMENTATION CRITERIA

IEC 61169-58



INTERFACE DIMENSIONS

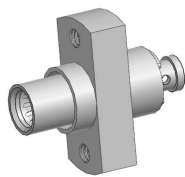


Male connector

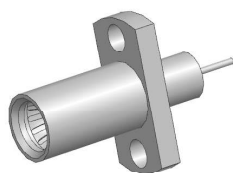
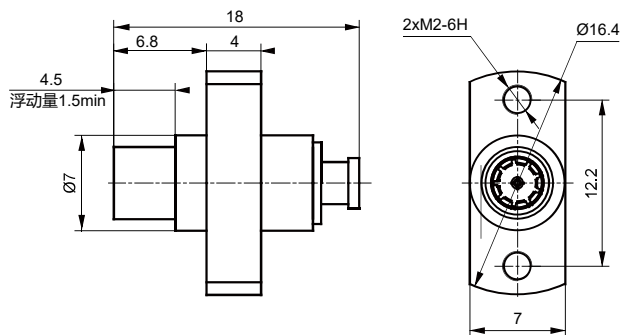
	Min(mm)	Max(mm)
A	0.86	0.88
B	2.78 Nominal value	
C	3.18	3.32
D	3.51	3.56
E	3.25	3.35
F	5.03	/
G	/	2.54
H	0.50	0.53

Female connector

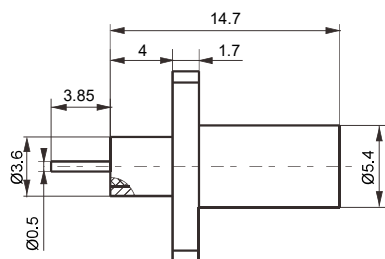
	Min(mm)	Max(mm)
A	2.78 Nominal value	
B	3.90	3.96
C	5.40	/
D	/	5.03
E	0.04	0.06
F	3.12	3.22
G	1.19	1.23



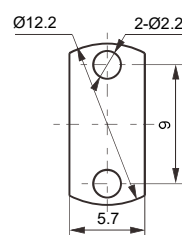
SBMA-KF3506



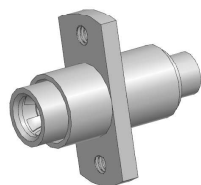
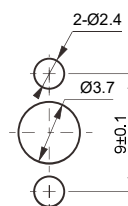
SBMA-KFD



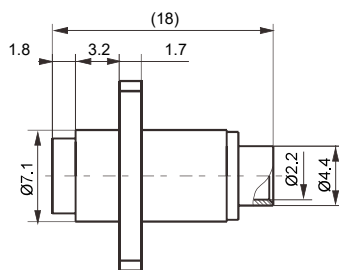
FLANGE SIZE



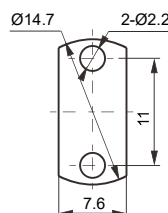
PC BOARD LAYOUT



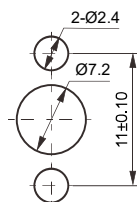
SBMA-KFB2G



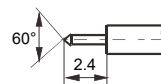
FLANGE SIZE



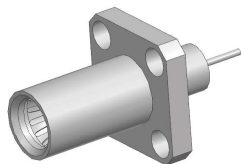
PC BOARD LAYOUT



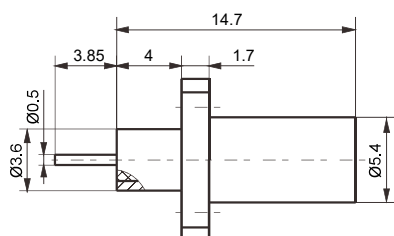
CABLE STRIPPING SIZE



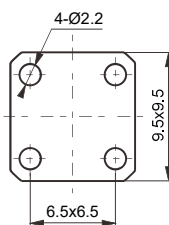
Type	Cable
SBMA-KFB2G	SFT-50-2-1 or .086



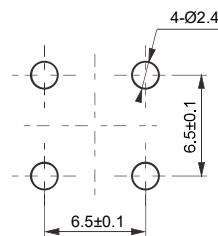
SBMA-KFD1

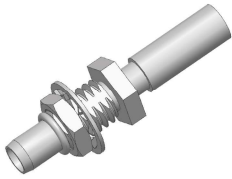


FLANGE SIZE

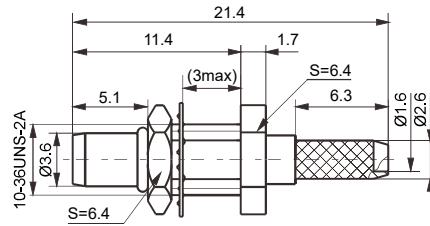


PC BOARD LAYOUT

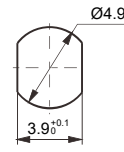




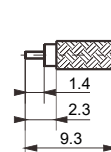
SBMA-JY3YG



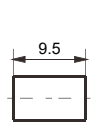
PC BOARD
LAYOUT



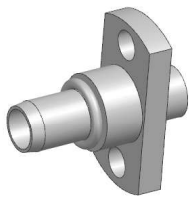
CABLE
STRIPPING SIZE



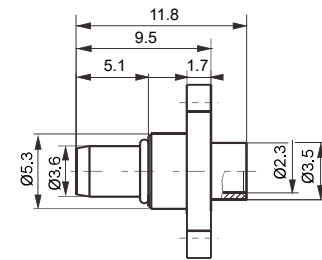
CLAMP



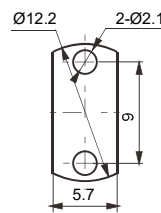
Type	Cable
SBMA-JY3YG	SYV-50-2-1 ,SFF-50-1.5-1



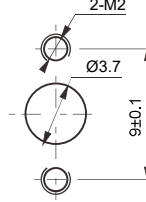
SBMA-JFB2



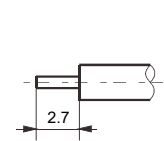
FLANGE SIZE



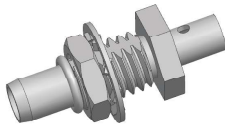
PC BOARD
LAYOUT



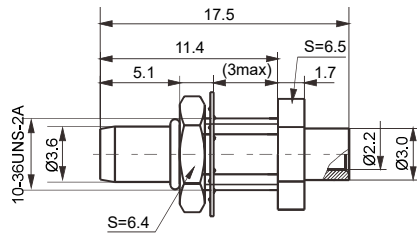
CABLE
STRIPPING SIZE



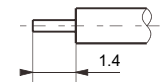
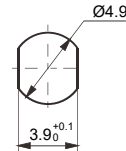
Type	Cable
SBMA-JFB2	SFT-50-2-1 or .086



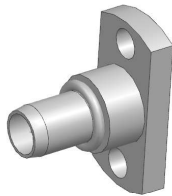
SBMA-JYB2



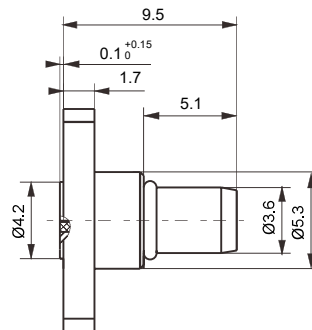
PC BOARD LAYOUT CABLE STRIPPING SIZE



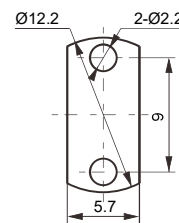
Type	Cable
SBMA-JYB2	SFT-50-2-1 or .086



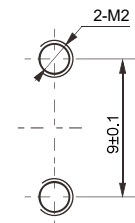
SBMA-JFDG



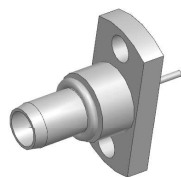
FLANGE SIZE



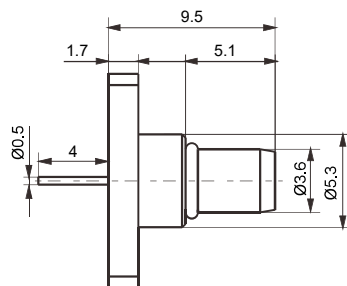
PC BOARD LAYOUT



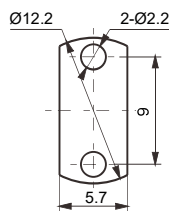
Notes: The tail is equipped with a Ø0.37-Ø0.4 pin



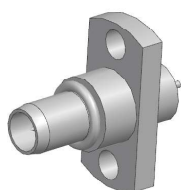
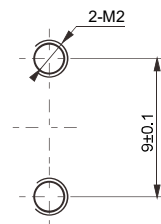
SBMA-JFDG-1



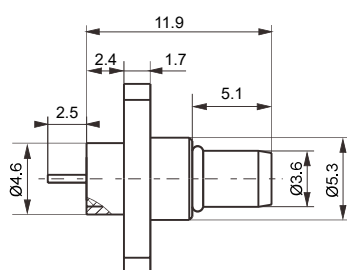
FLANGE SIZE



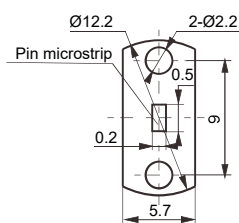
PC BOARD LAYOUT



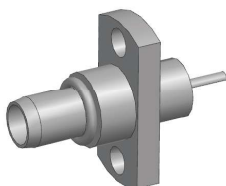
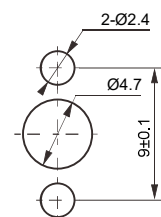
SBMA-JFD-2



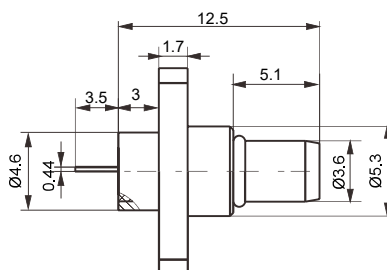
FLANGE SIZE



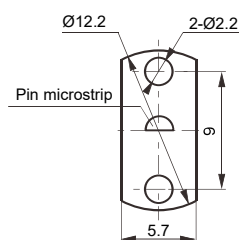
PC BOARD LAYOUT



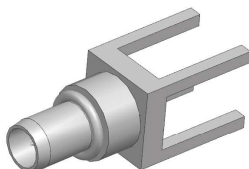
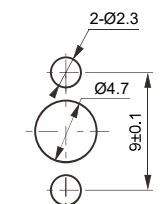
SBMA-JFD-3



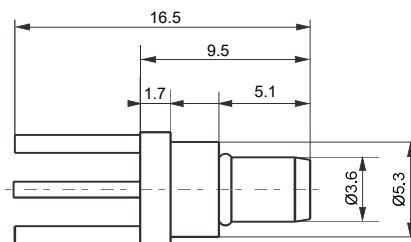
FLANGE SIZE



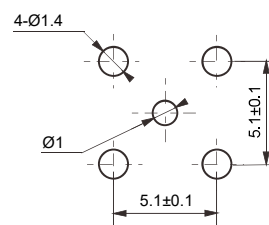
PC BOARD LAYOUT

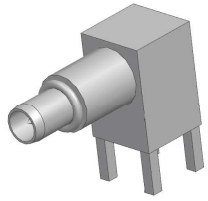


SBMA-JHD

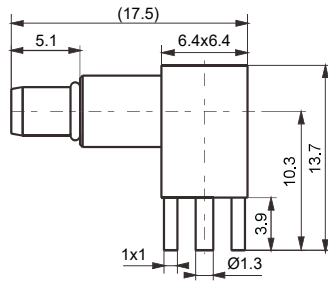


PC BOARD LAYOUT

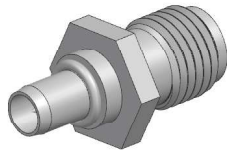
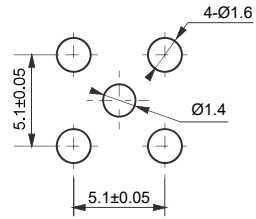




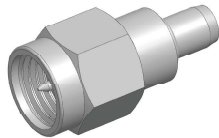
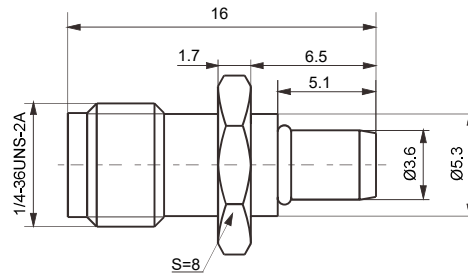
SBMA-JWHD



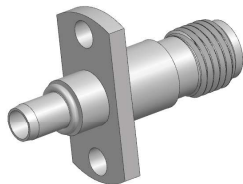
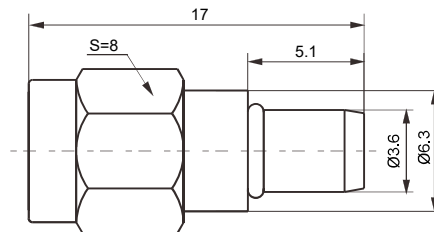
PC BOARD LAYOUT



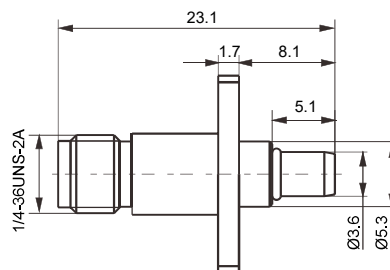
SMA/SBMA-KJ



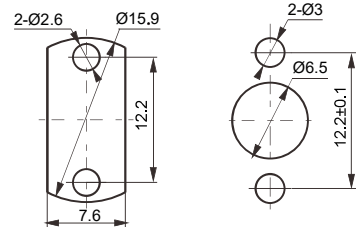
SMA/SBMA-JJ



SMA/SBMA-KFJ

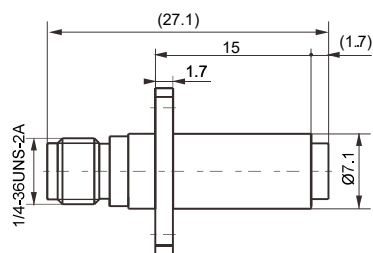


FLANGE SIZE PC BOARD LAYOUT

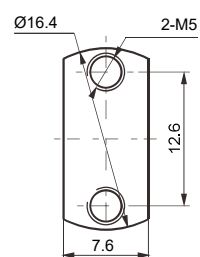




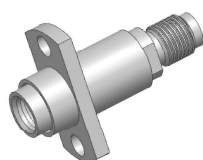
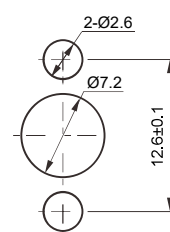
SMA/SBMA-KFK



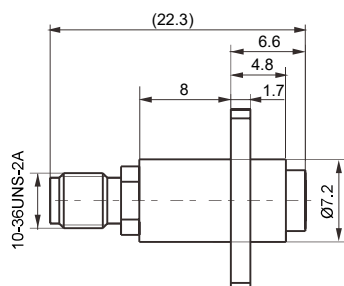
FLANGE SIZE



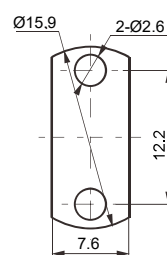
PC BOARD LAYOUT



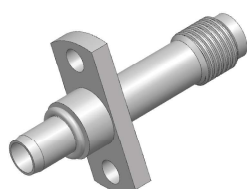
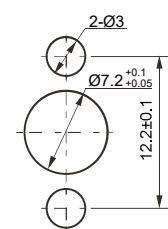
SSMA/SBMA-KFK



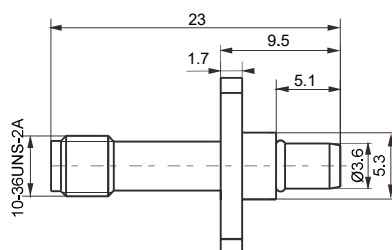
FLANGE SIZE



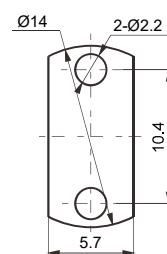
PC BOARD LAYOUT



SSMA/SBMA-KFJ



FLANGE SIZE



PC BOARD LAYOUT

