

SSMA series

RF Coaxial Connector

FEATURES

- Small size and wide frequency band
- Excellent mechanical and electrical performance, high reliability
- Suitable for fields such as microwave communication and microwave testing equipment

TECHNICAL PARAMETER

Temperature: -55~+155°C

Impedance: 50Ω

Frequency: DC~30GHz

VSWR: $\leq 1.07 + 0.1F$

Insulation resistance: $\geq 1000M\Omega$

Dielectric strength: 750V(rms)

Operating Voltage: 250V (rms)

Contact resistance: Center contact: $\leq 6m\Omega$
Outer contact: $\leq 2.5m\Omega$

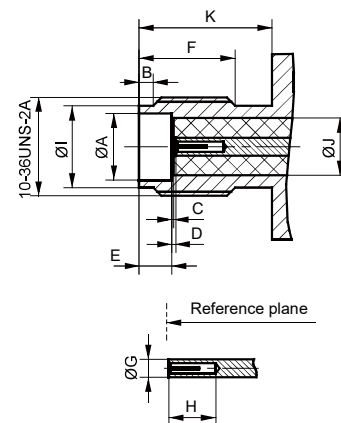
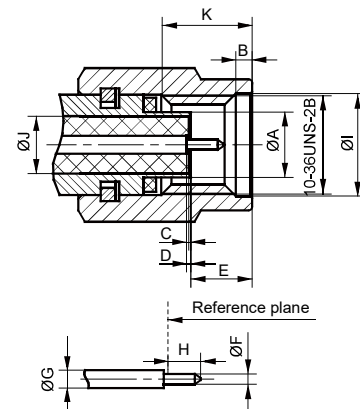
Mechanical endurance: 500 ops

IMPLEMENTATION CRITERIA

IEC IEC 61169-18 GB/T 11313.18



INTERFACE DIMENSIONS

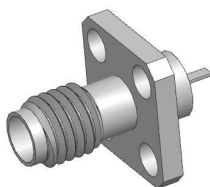


Male connector

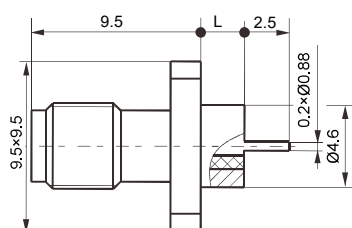
	Min(mm)	Max(mm)
A	3.15	3.22
B	0.38	1.14
C	0.00	0.18
D	0.00	0.25
E	/	3.43
F	0.495	0.528
G	/	/
H	/	1.65
I	4.98	/
J	Ø2.79 Nominal value	
K	2.54	/

Female connector

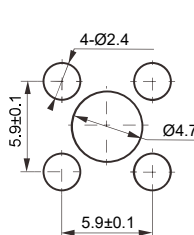
	Min(mm)	Max(mm)
A	3.231	3.300
B	0.38	1.14
C	0.00	0.18
D	0.00	0.25
E	1.88	1.98
F	4.32	/
G	/	/
H	2.92	/
I	3.89	4.06
J	Ø2.79 Nominal value	
K	5.84	/



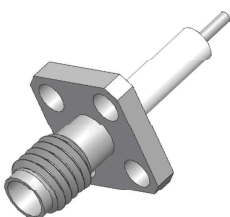
SSMA-KFD-6



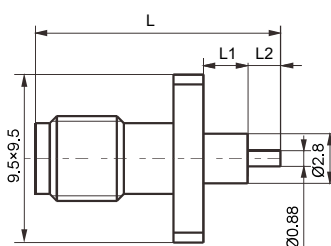
PC BOARD LAYOUT



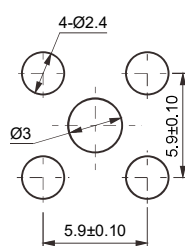
Type	L
SSMA-KFD-6	2.4
SSMA-KFD-7	3.2
SSMA-KFD-8	4.8



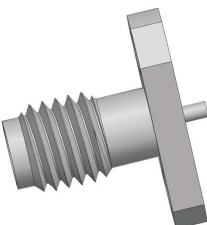
SSMA-KFD-10



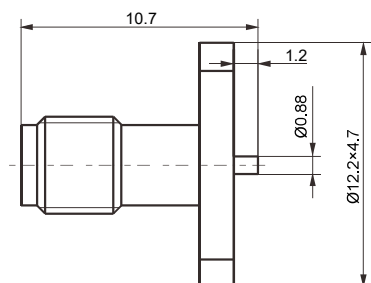
PC BOARD LAYOUT



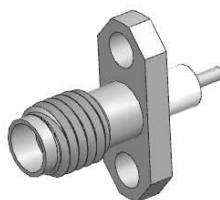
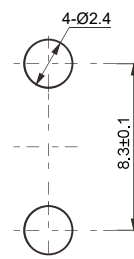
Type	L	L1	L2
SSMA-KFD-10	22.2	9.5	3.2
SSMA-KFD-11	14.0	2.5	2.0



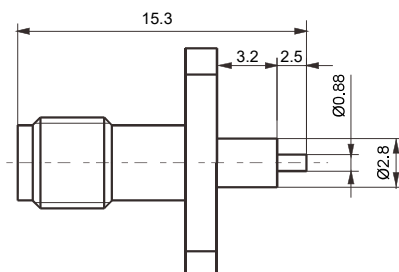
SSMA-KFD-12



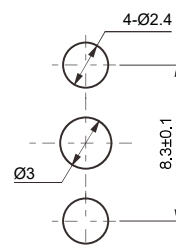
PC BOARD LAYOUT

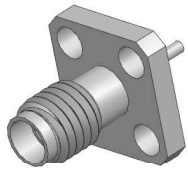


SSMA-KFDG-15

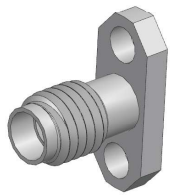
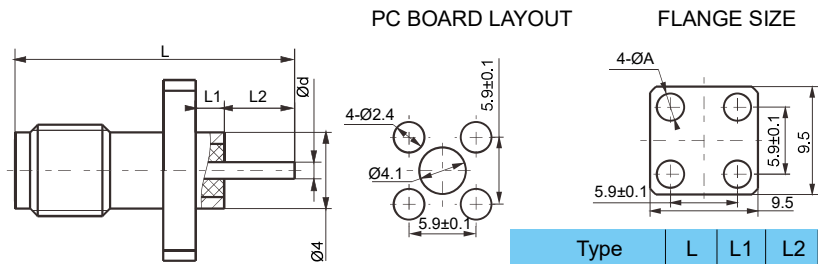


PC BOARD LAYOUT

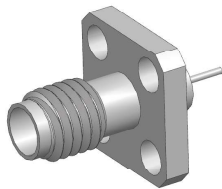
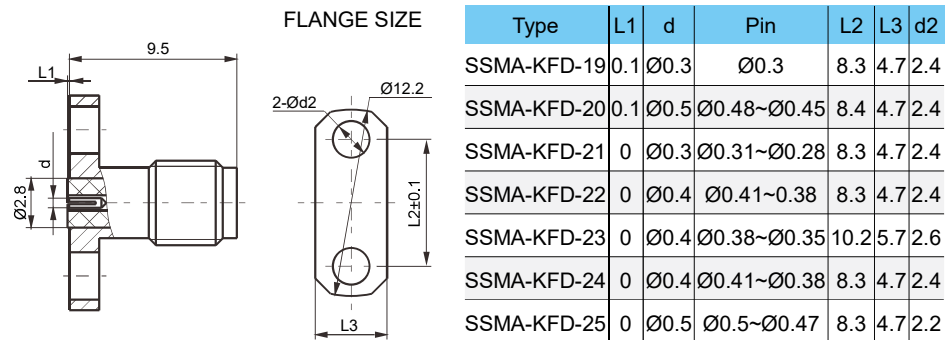




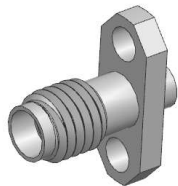
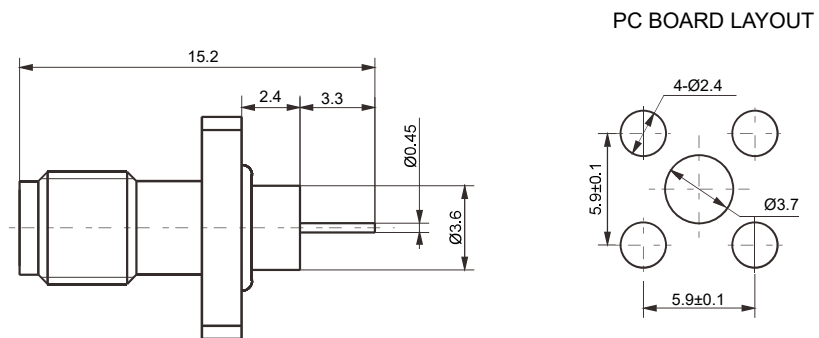
SSMA-KFD-17



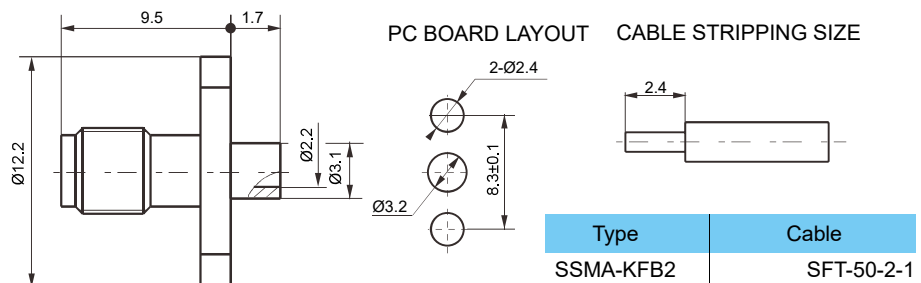
SSMA-KFD-19

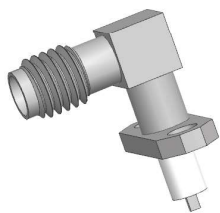
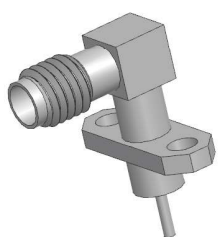
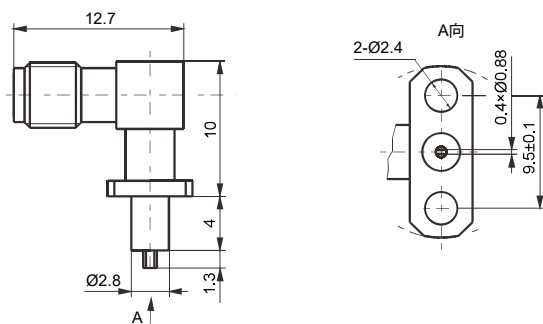
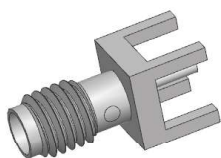
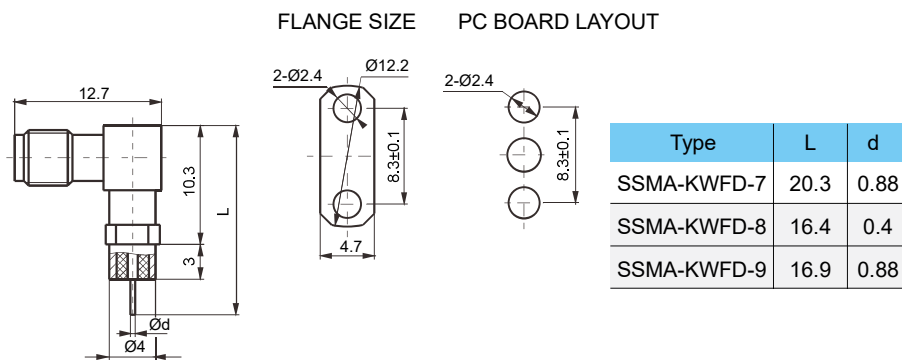
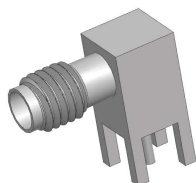
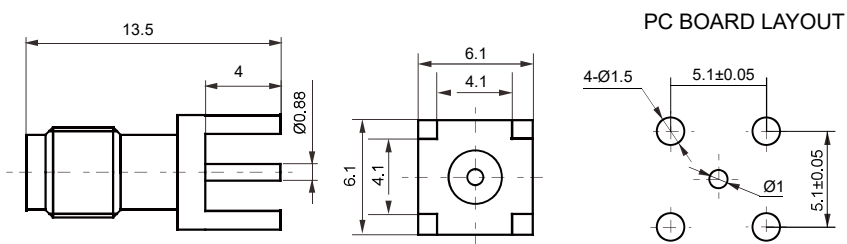
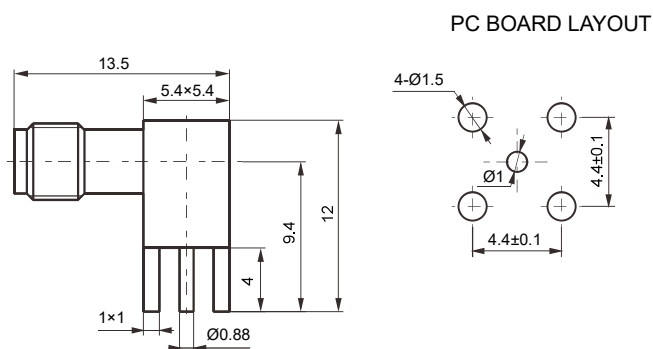


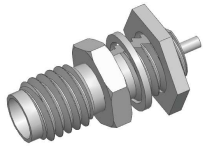
SSMA-M-KFD-27



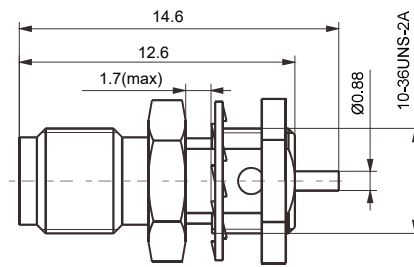
SSMA-KFB2



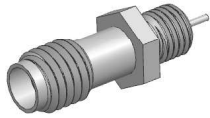
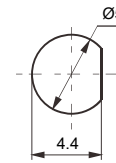
**SSMA-KWFD5****SSMA-KWFD7****SSMA-KHD****SSMA-KWHD**



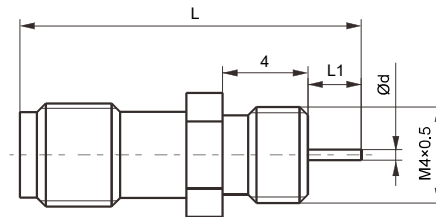
SSMA-KYD



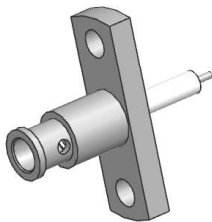
PC BOARD LAYOUT



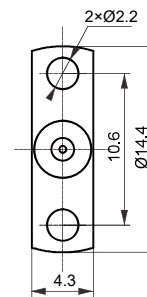
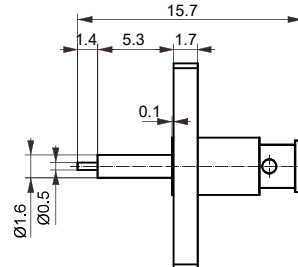
SSMA-KYD1



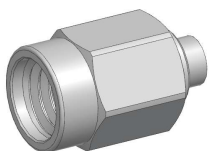
Type	L	L1	d
SSMA-KYD-1	16.0	2.5	0.5
SSMA-KYD-2	16.5	3.0	0.7



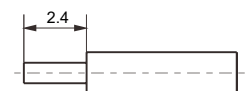
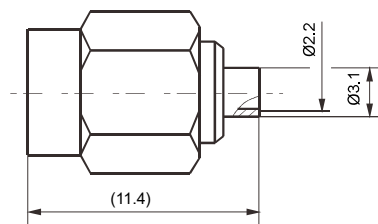
SSMA-J506

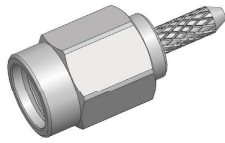
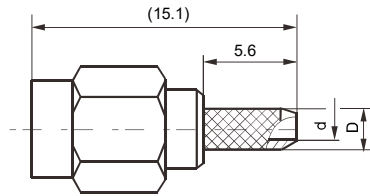


CABLE STRIPPING SIZE

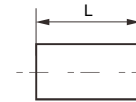


SSMA-JB2

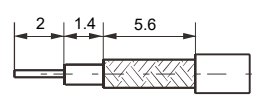


**SSMA-J2**

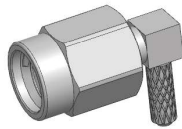
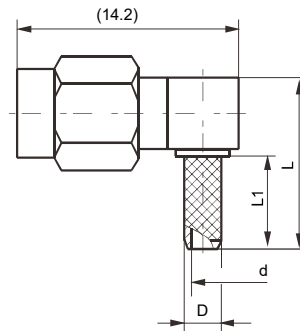
CLAMP



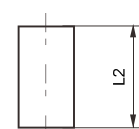
CABLE STRIPPING SIZE



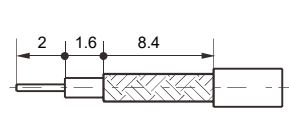
Type	d	D	Cable	L
SSMA-J2	Ø1.0	Ø2.0	SFF-50-1	6.0
			SYV-50-1	
SSMA-J3	Ø1.6	Ø2.6	SFF-50-1.5-1	6.5
			SYV-50-2-1	

**SSMA-JW2**

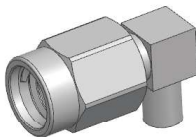
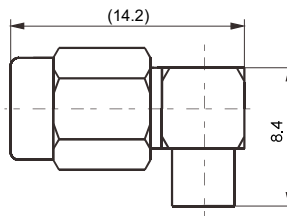
CLAMP



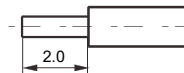
CABLE STRIPPING SIZE



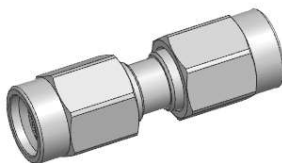
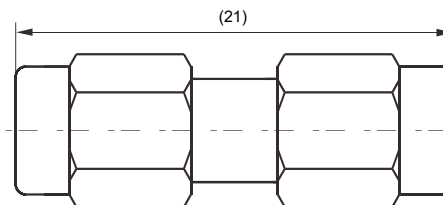
Type	d	D	Cable	L	L1	L2
SSMA-JW2	Ø1.0	Ø2.0	SFF-50-1	11.4	5.6	6.0
			SYV-50-1			
SSMA-JW3	Ø1.6	Ø2.6	SFF-50-1.5-1	12.0	6.5	6.5
			SYV-50-2-1			

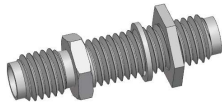
**SSMA-JWB2**

CABLE STRIPPING SIZE

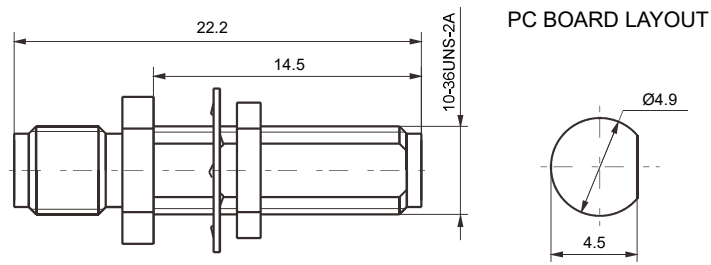
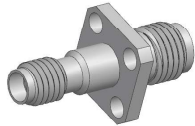


Type	Cable
SSMA-JWB2	SFT-50-2-1

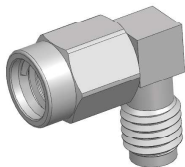
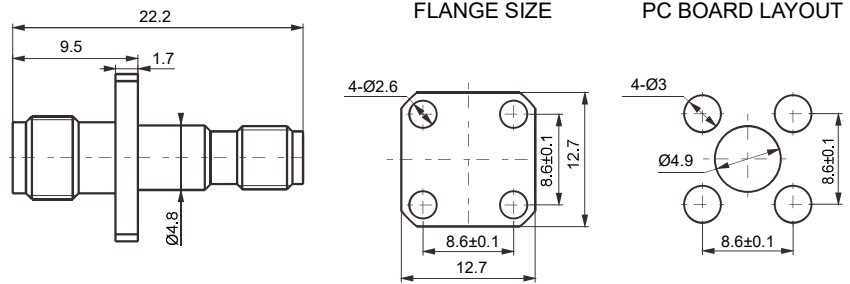
**SSMA-JJ**



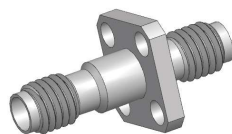
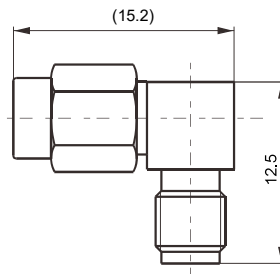
SSMA-KYK

Notes: Panel wall size $\leq 5\text{mm}$ 

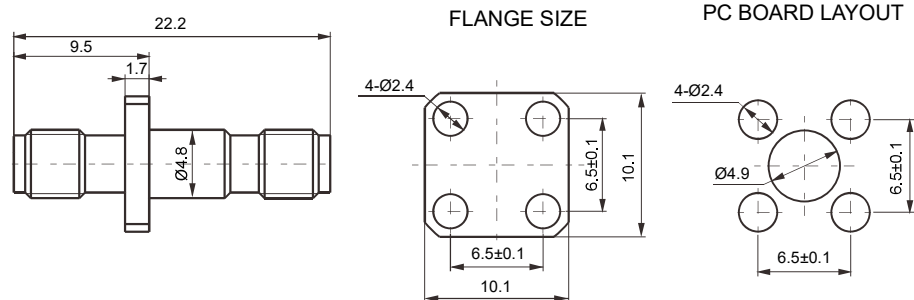
SMA/SSMA-KFK

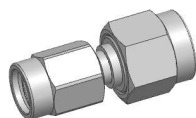
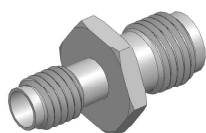
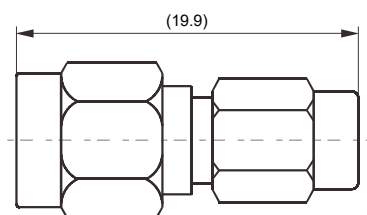
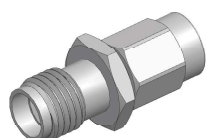
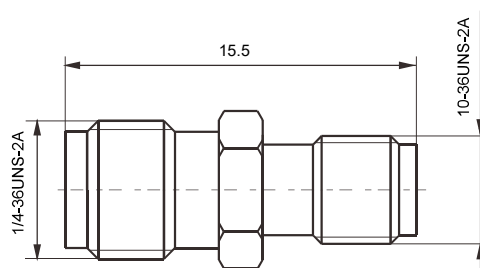
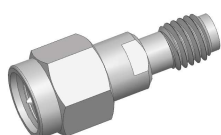
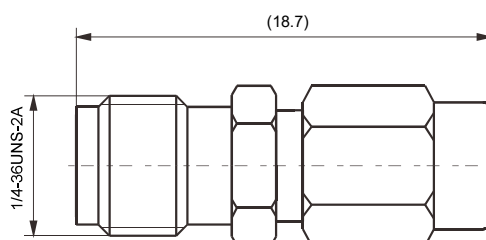


SSMA-JWK



SSMA-KFK



**SMA/SSMA-JJ****SMA/SSMA-KK****SMA/SSMA-KJ****SMA/SSMA-JK**