

SMP series

RF Coaxial Connector

FEATURES

- High usage frequency, fast connection
- There is a certain tolerance in axial and radial directions
- Suitable for blind insertion environments, high-density insertion of printed boards, chassis, and cabinets

TECHNICAL PARAMETER

Temperature: - 55~+155°C

Impedance: 50Ω

Frequency: 0~12.4GHz Flexible cable

DC-40GHz semi rigid and semi flexible cable

VSWR: $\leq 1.15+0.02F$ Flexible cable

$\leq 1.1+0.02F$ semi rigid and semi flexible cable

Insulation resistance: $\geq 5000M\Omega$

Dielectric strength: 500V(rms)

Operating Voltage: 335V (rms)

Contact resistance: Center content: $\leq 6m\Omega$

Outer contact: $\leq 2.5m\Omega$

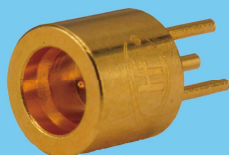
Mechanical endurance: Full detent 100 ops

Limiter detent 500 ops

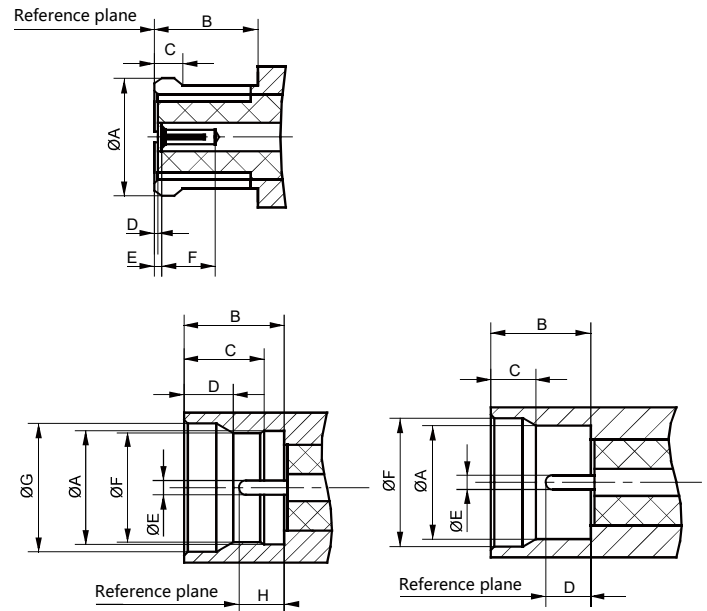
smooth bore 1000 ops

IMPLEMENTATION CRITERIA

IEC 61169-44 GB/T 11313.1



INTERFACE DIMENSIONS



Full detent or Limiter detent

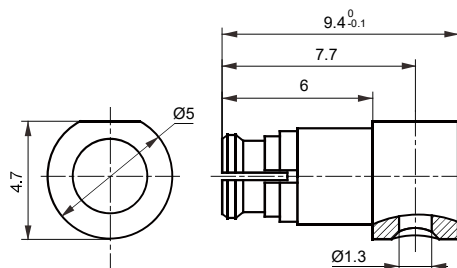
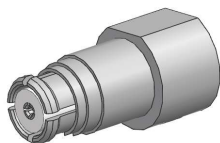
Smooth bore

Male connector (Full detent or Limiter detent)

	Min(mm)	Max(mm)	Notes
A	3.16	3.23	
B	2.74	2.84	
C	2.19	2.29	
D	1.39	1.45	
E	0.35	0.41	
F	2.9	3.0	Full detent
	3.0	3.1	Limiter detent
G	3.53	3.639	
H	1.14	1.40	

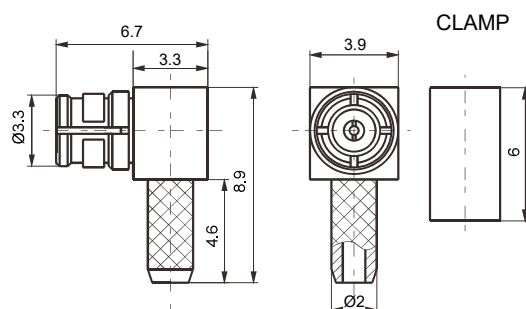
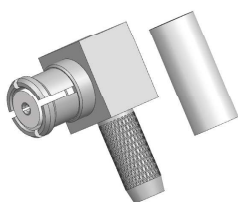
Male connector(Smooth bore) Female connector

	Min(mm)	Max(mm)		Min(mm)	Max(mm)
A	3.13	3.23	A	/	3.43
B	2.74	2.84	B	2.84	/
C	1.39	1.45	C	0.46	0.64
D	1.14	1.40	D	0.00	/
E	0.35	0.41	E	0.00	0.20
F	3.53	3.69	F	1.78	/



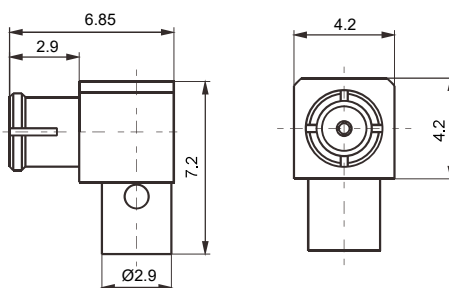
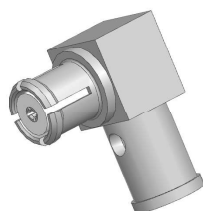
Type	Cable
SMP-KWB1	SFT-50-1 or equivalent specifications

SMP-KWB1



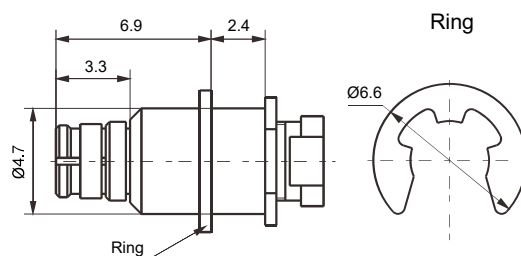
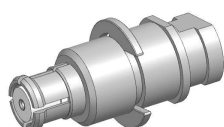
Type	Cable
SMP-KW2	SFF-50-1

SMP-KW2



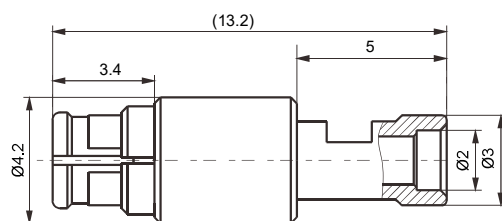
Type	Cable
SMP-KW3506	GORE CXN3506

SMP-KW3506

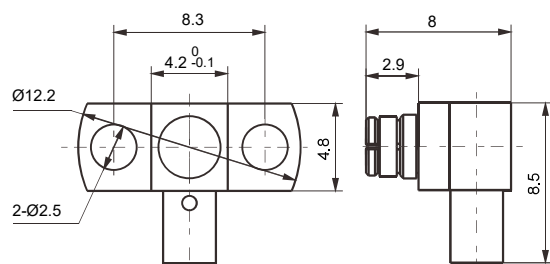
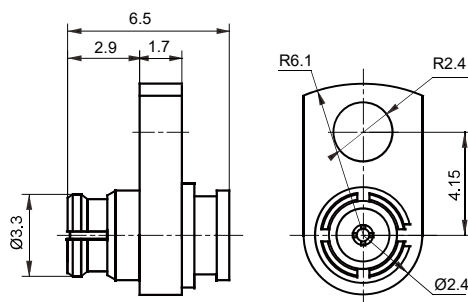


Type	Cable
SMP-KW3506-1	GORE CXN3506

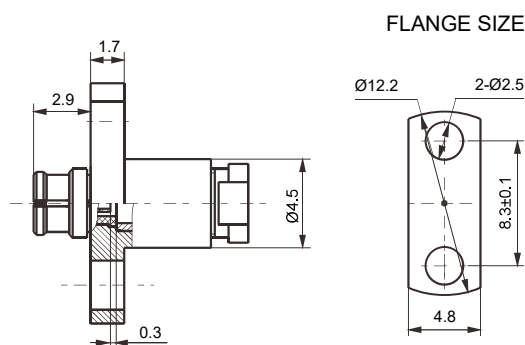
SMP-K3506-1



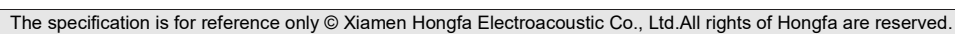
Type	Cable
SMP-KF2	SFF-50-1

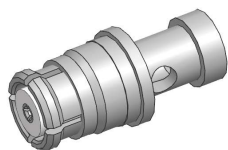


Type	Cable
SMP-KFW3506	GORE CXN3506

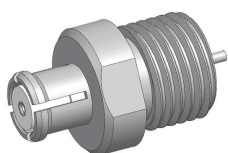
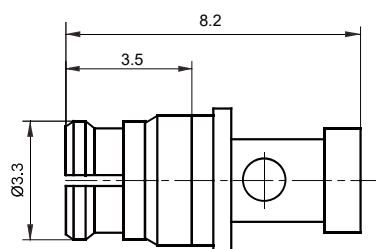


Type	Cable
SMP-KF3506-1	GORE CXN3506

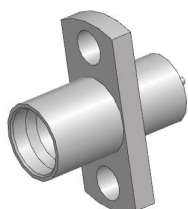
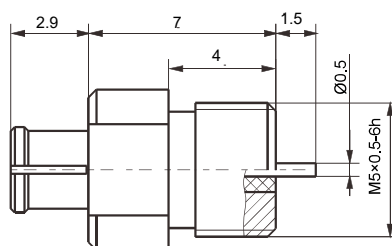




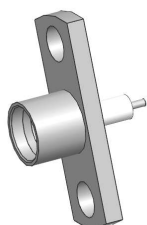
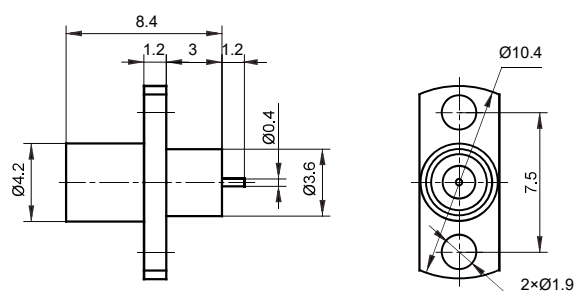
SMP-KB1



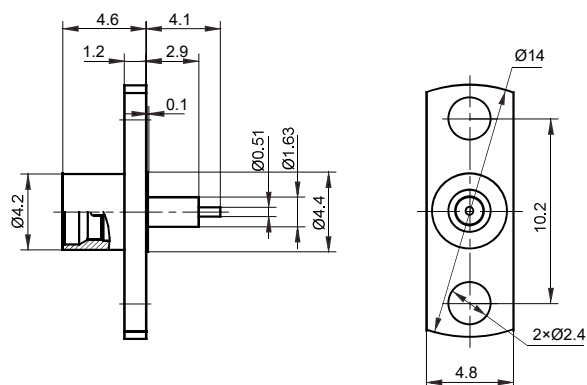
SMP-KYD

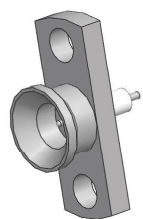


SMP-JFD

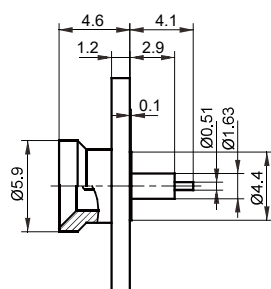


SMP-JFD- 1

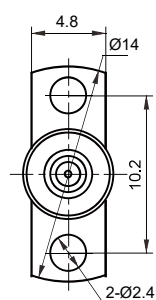




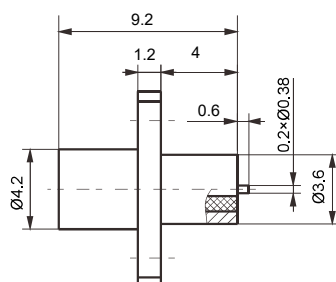
SMP-JFD-2



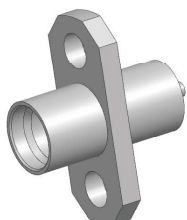
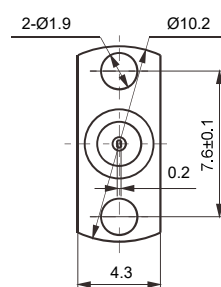
FLANGE SIZE



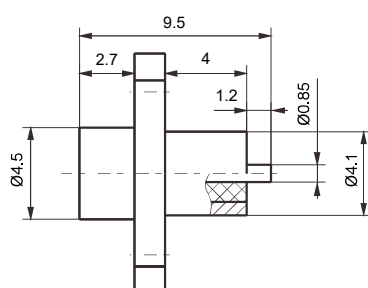
SMP-JFDL-4



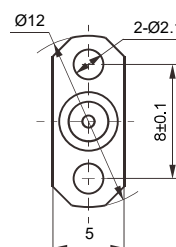
FLANGE SIZE



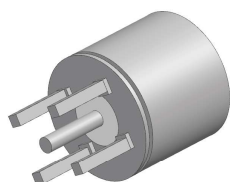
SMP-JFDGL-5



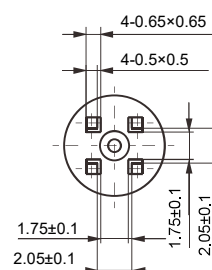
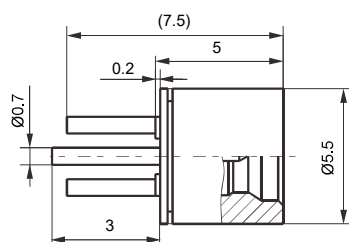
FLANGE SIZE



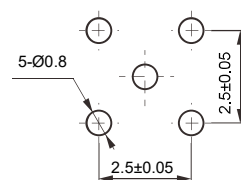
Notes: Product shell material is stainless steel



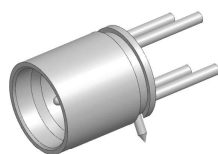
SMP-JHDGL-5



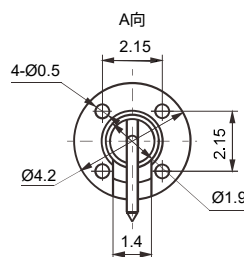
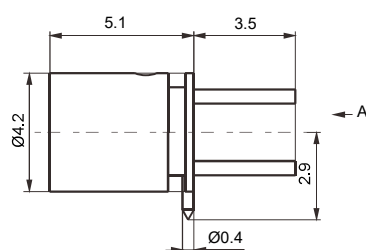
PC BOARD LAYOUT



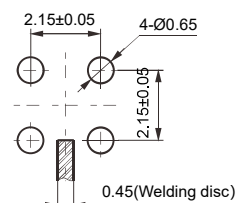
Notes: Pin material Plating: Copper gold-plated
Shell material Plating: Stainless steel passivation



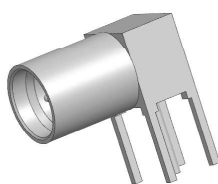
SMP-JHDL-6



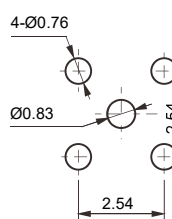
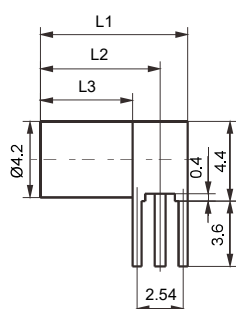
PC BOARD LAYOUT



PC BOARD LAYOUT

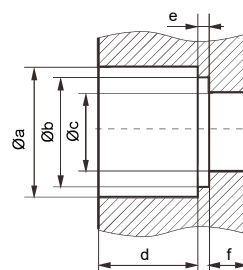
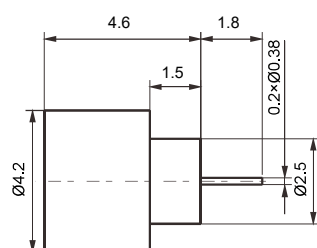


SMP-JWHDGL



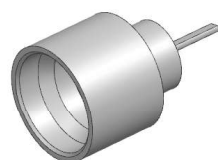
Type	L1	L2	L3	Pin material Plating	Shell material Plating
SMP-JWHDGL	8.16	6.5	1	Copper	Stainless
SMP-JWHDGL18	7.7	25.7		gold-plated	steel passivation

PC BOARD LAYOUT

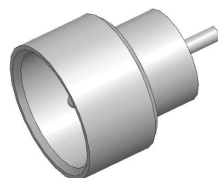


a	4.25-4.3
b	3.45-3.55
c	2.6-2.65
d	3.15-3.2
e	0.28-0.38
f	1.55-1.6

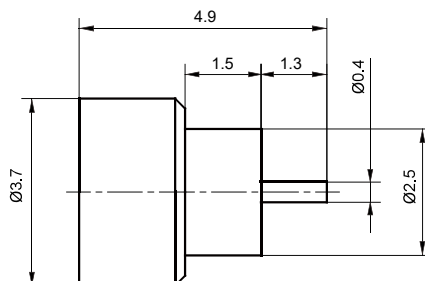
Notes:
Leakage rate $\leq 1.013 \times 10^{-3} \text{ Pa} \cdot \text{cm}^3/\text{S}$

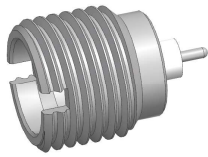
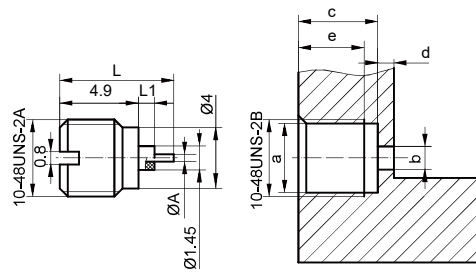


SMP-M-JHDL-3

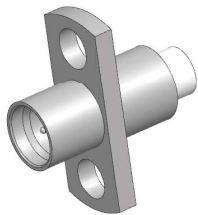
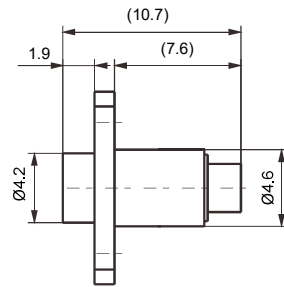
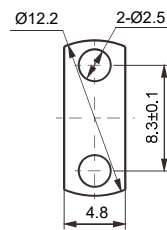


SMP-M-JHD



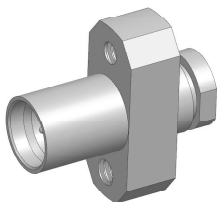
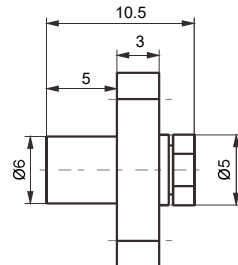
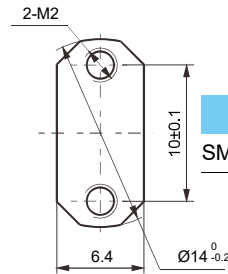
**SMP-JYDL-3**

Type	L	L1	A	Shell material Plating
SMP-JYDL-3	7.1	1.0	0.45	Copper gold-plated
SMP-JYDL-4	10.9	1.0	0.45	
SMP-JYDGL-5	7.1	1.0	0.45	Stainless steel passivation
a	4.3~4.35			
b	1.45~4.5			
c	4.95~5.05			
d	1.0~1.05			
e	4.1~4.2			

**SMP-JF2GL****FLANGE SIZE**

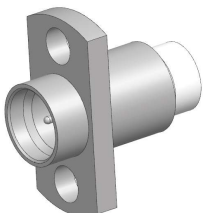
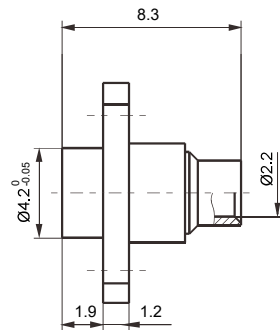
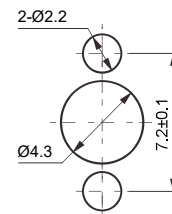
Type	Cable
SMP-JF2GL	SFF-50-1

Notes: Product shell material is stainless steel

**SMP-JF3506GL****FLANGE SIZE**

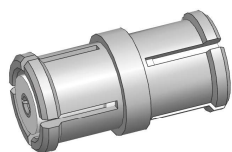
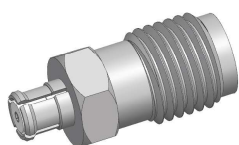
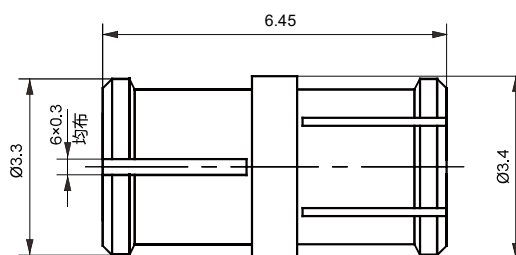
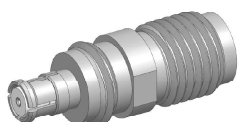
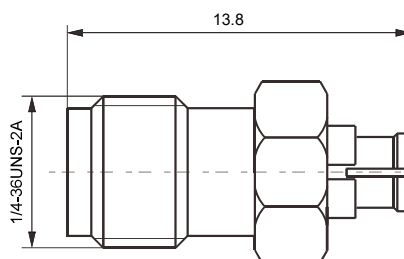
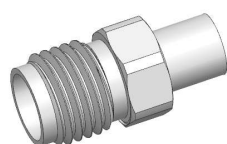
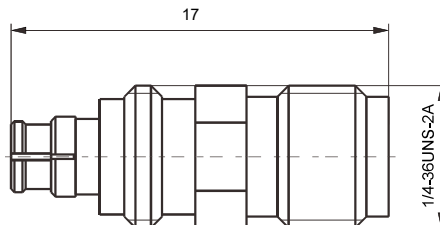
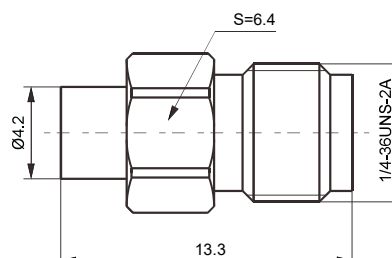
Type	Cable
SMP-JF3506GL	GORE CXN3506

Notes: Product shell material is stainless steel

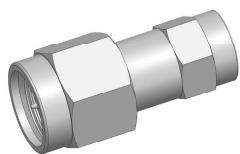
**SMP-JFB2GL****PC BOARD LAYOUT**

Type	Cable
SMP-JFB2GL	SFT-50-2-1

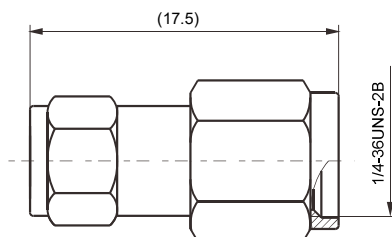
Notes: Product shell material is stainless steel

**SMP-KK****SMA/SMP-KK****SMA/SMP-KYK****SMA/SMP-KJGL**

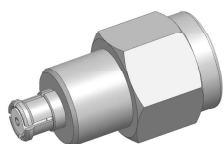
Notes: Product shell material is stainless steel



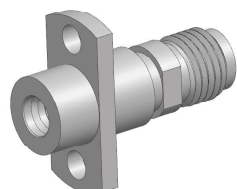
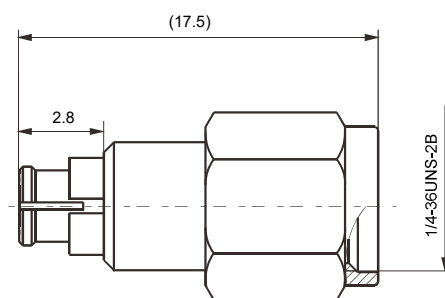
SMA/SMP-JJGL



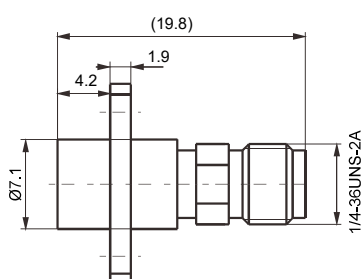
Notes: Product shell material is stainless steel



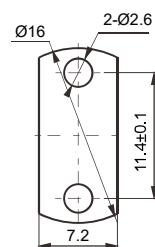
SMA/SMP-JK



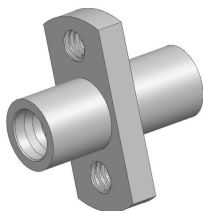
SMA/SMP-KFJGL



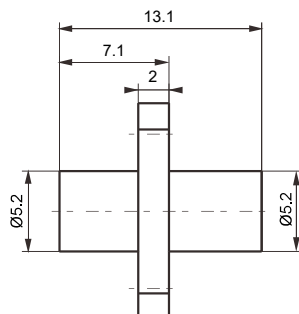
Flange size



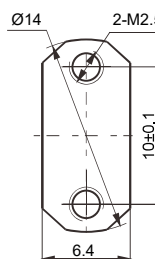
Notes: Product shell material is stainless steel



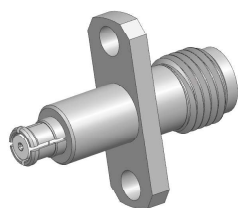
SMP-JFJL



Flange size



Notes: Product shell material is stainless steel

**SMA/SMP-KFK**