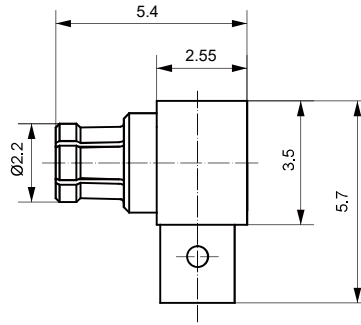
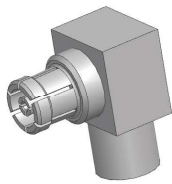


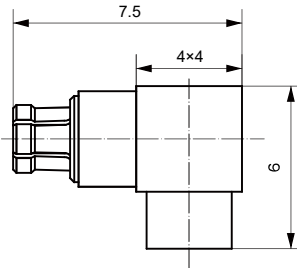
SSMP-KWB1



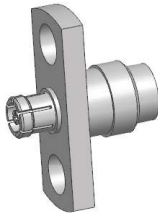
Type	Cable
SSMP-KWB1	1#Semi rigid or 1#semi flexible



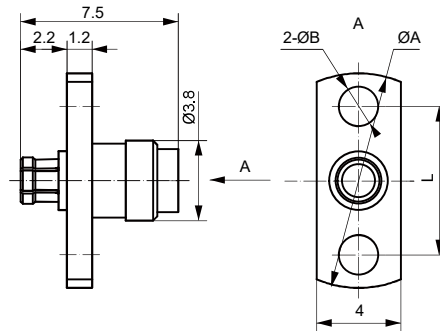
SSMP-KWB2



Type	Cable
SSMP-KWB2	2#Semi rigid or 2#semi flexible



SSMP-KFB2



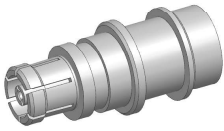
Type	L	A	B	Cable
SSMP-KFB2	7.16	10.2	1.9	2#Semi rigid, semi flexible
SSMP-KFB2-1	7.8	10.8	2.2	



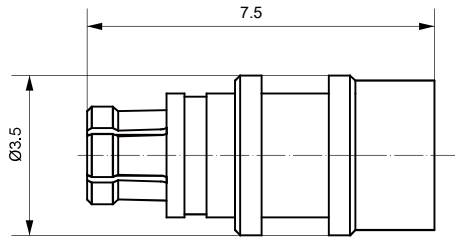
SSMP-KB1-1



Type	Cable
SSMP-KB1-1	1#Semi rigid or 1#semi flexible



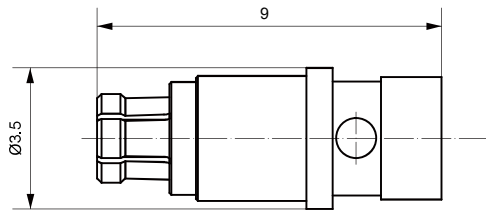
**SSMP-KB2**



Type	Cable
SSMP-KB2	2#Semi rigid or 2#semi flexible



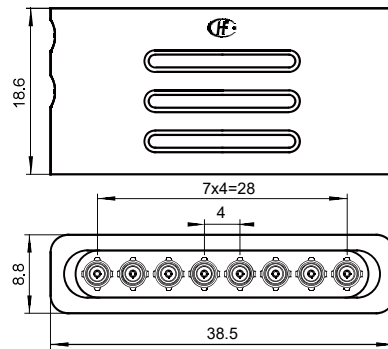
**SSMP-K3506**



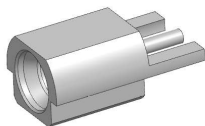
Type	Cable
SSMP-K3506	CXN3506



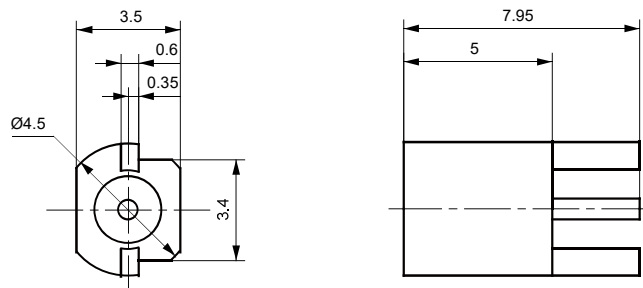
**SSMP8-K3506**

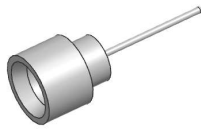


Type	Cable
SSMP8-K3506	CXN3506 or equivalent cable

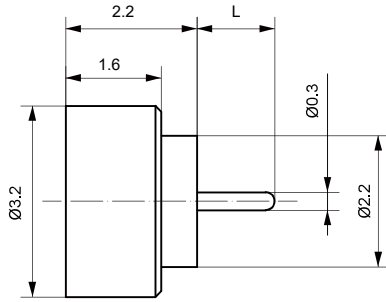


**SSMSSMP-JHD**

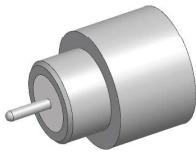




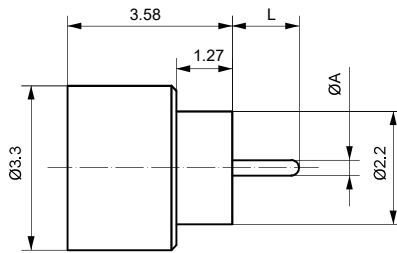
SSMP-M-JHDF-1



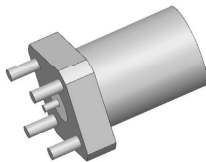
Type	L	Notes
SSMP-M-JHDF-1	1.3	Airtight seal, Interface depth 1.4
SSMP-M-JHDS-1	1.3	
SSMP-M-JHDF-2	0.8	
SSMP-M-JHDF-3	1.0	
SSMP-M-JHDS-4	3.0	
SSMP-M-JHDS-5	1.3	



SSMP-M-JHDF-6

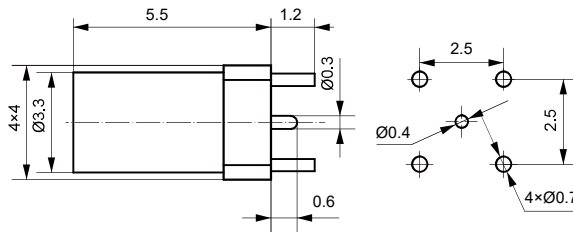


Type	L	A	Notes
SSMP-M-JHDF-6	1.27	0.3	Airtight seal, Interface depth 2.11
SSMP-M-JHDS-6	1.27	0.3	
SSMP-M-JHDF-7	0.8	0.3	
SSMP-M-JHDF-8	3.5	0.3	
SSMP-M-JHDS-9	1.8	0.3	
SSMP-M-JHDF-10	0.8	0.2	

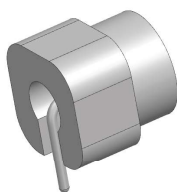


SSMP-M-JHDS-11

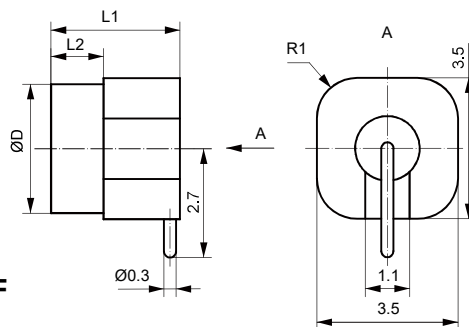
PC BOARD LAYOUT



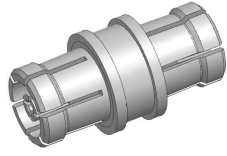
Type	Notes
SSMP-M-JHDS-11	Smooth bore



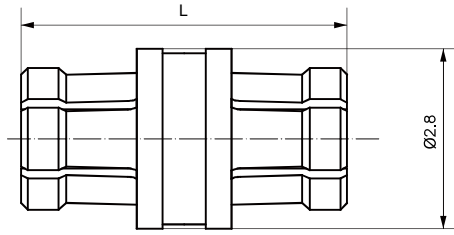
SSMP(M)-JWHDF



Type	L1	L2	D	Notes
SSMP-M-JWHDF	3.2	1.3	3.2	Airtight seal, Interface depth 1.4
SSMP-M-JWHDS	3.2	1.3	3.2	
SSMP-M-JWHDS-1	3.9	2.0	3.3	Airtight seal, Interface depth 2.11



**SSMP-KK**



Type	L
SSMP-KK	5.4
SSMP-KK1	6.3