

2.92 series RF Coaxial Connector

FEATURES

- Can be interchangeable with SMA series products, using air dielectric
- Small size, light weight, and operating frequency up to 40GHz
- Excellent electrical performance and high connection reliability
- Suitable for testing and measurement fields, aerospace equipment, etc

TECHNICAL PARAMETER

Temperature: -55~+155°C

Impedance: 50Ω

Frequency: DC~40GHz

VSWR: $\leq 1.1+0.01F$

Insulation resistance: $\geq 5000M\Omega$

Dielectric strength: 750V(rms)

Operating Voltage: 335V (rms)

Contact resistance: Center contact: $\leq 3m\Omega$

Outer contact: $\leq 2m\Omega$

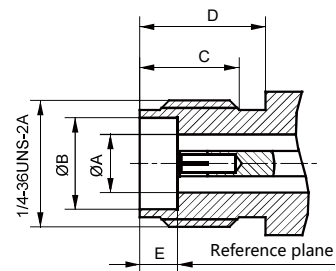
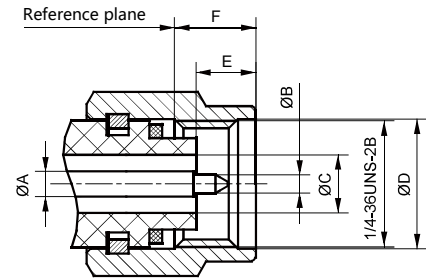
Mechanical endurance: 500 OPS

IMPLEMENTATION CRITERIA

IEC 61169-35 GB/T 11313.35



INTERFACE DIMENSIONS

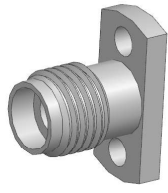


Male connector

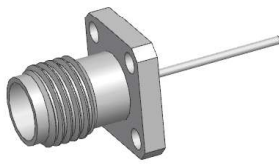
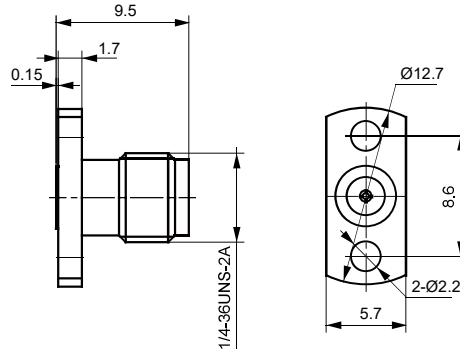
	Min(mm)	Max(mm)
A	1.26	1.28
B	0.906	0.922
C	2.90	2.95
D	6.35	/
E	2.36	3.56
F	3.30	/

Female connector

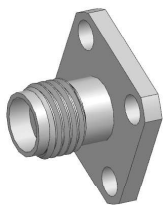
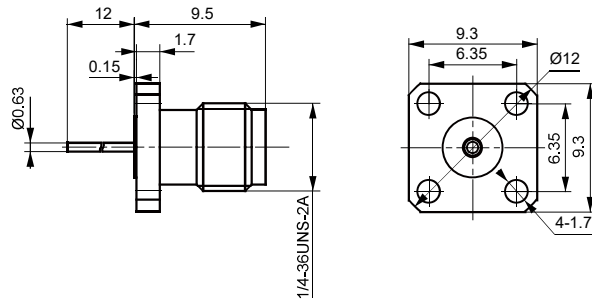
	Min(mm)	Max(mm)
A	2.90	2.95
B	4.60	4.65
C	4.32	/
D	5.54	/
E	1.88	1.98



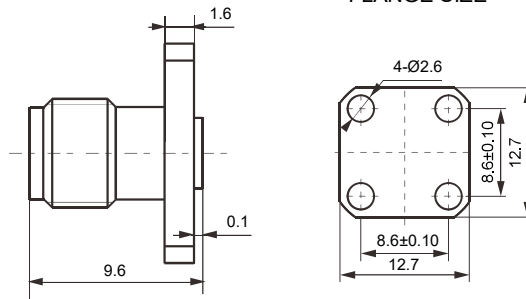
2.92-KFDG-1



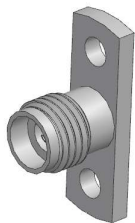
2.92-KFDG-2



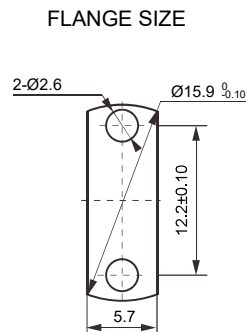
2.92-KFDG-10



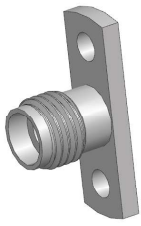
Notes: Implementation criteria:Ø0.3



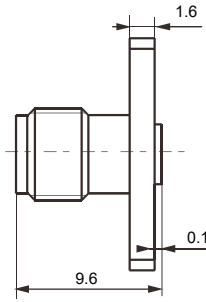
2.92-KFDG-11



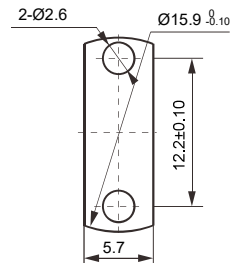
Notes: Implementation criteria:Ø0.3



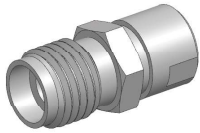
2.92-KFD-11



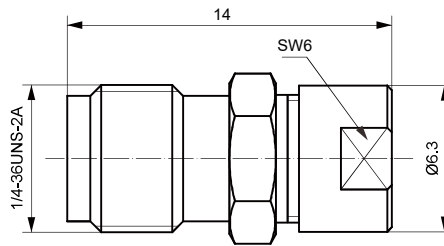
FLANGE SIZE



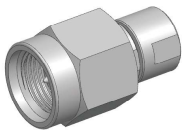
Notes: Implementation criteria:Ø0.3



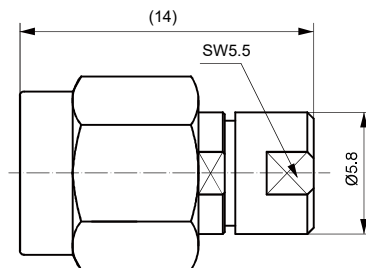
2.92-K3506G



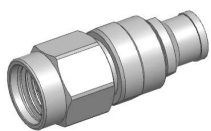
Type	Cable
2.92-K3506G	CXN3506



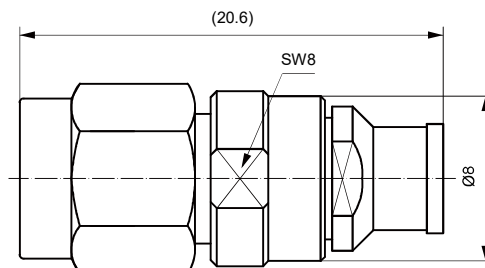
2.92-J3506G



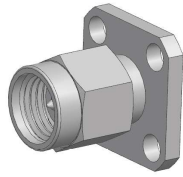
Type	Cable
2.92-J3506G	CXN3506



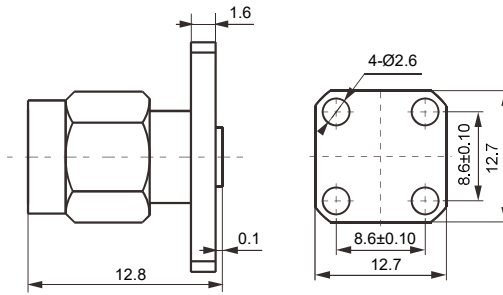
2.92-J3507G



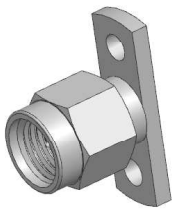
Type	Cable
2.92-J3507G	CXN3507



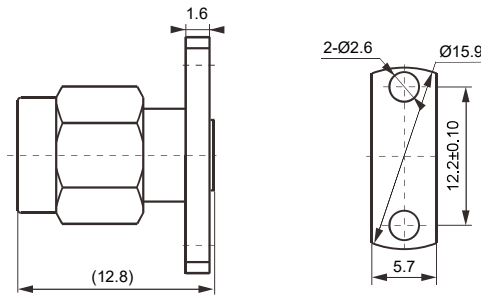
2.92-JFDG



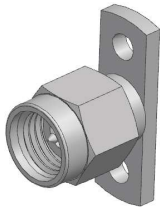
Notes: Implementation criteria:Ø0.3



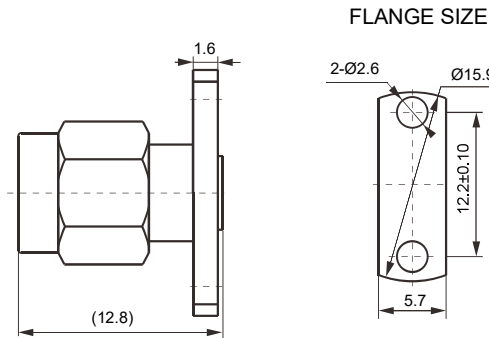
2.92-JFD-1



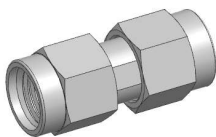
Notes: Implementation criteria:Ø0.3



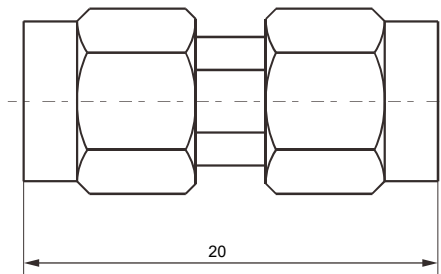
2.92-JFDG-1

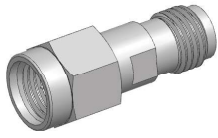


Notes: Implementation criteria:Ø0.3

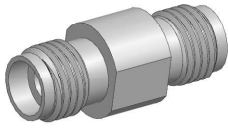
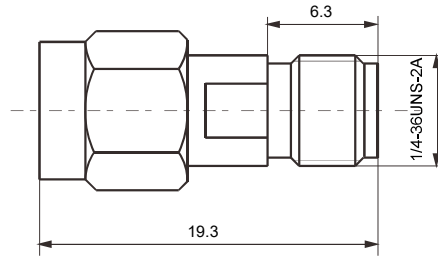


2.92-JJG

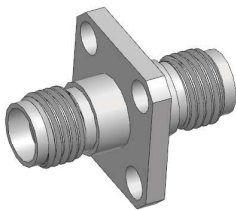
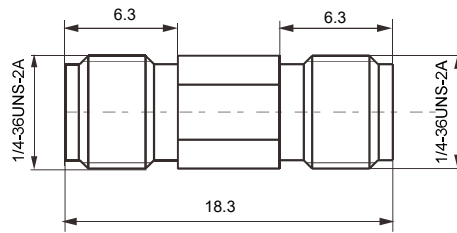




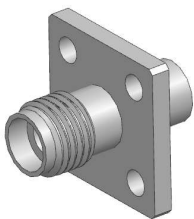
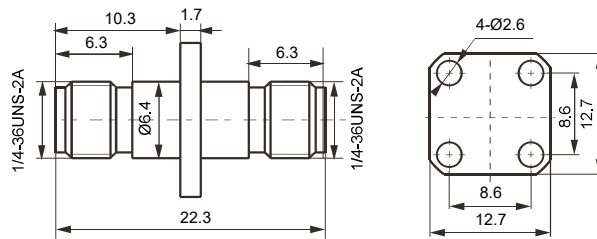
2.92-JKG



2.92-KKG



2.92-KFKG



2.92/SMP-KJ

