

2.4 series

RF Coaxial Connector

FEATURES

- Can be interchangeable with 1.85 series products, using air dielectric
- Small size, light weight, and operating frequency up to 50GHz
- Excellent electrical performance and high connection reliability

TECHNICAL PARAMETER

Temperature: - 55~+125°C

Impedance: 50Ω

Frequency: DC~50GHz

VSWR: $\leq 1.04 + 0.015F$

Insulation resistance: $\geq 1000M\Omega$

Dielectric strength: 500V(rms)

Operating Voltage: 335V (rms)

Contact resistance: Center contact: $\leq 4m\Omega$

Outer contact: $\leq 2.5m\Omega$

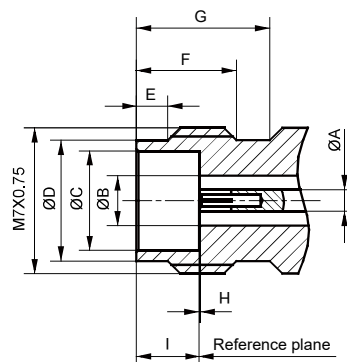
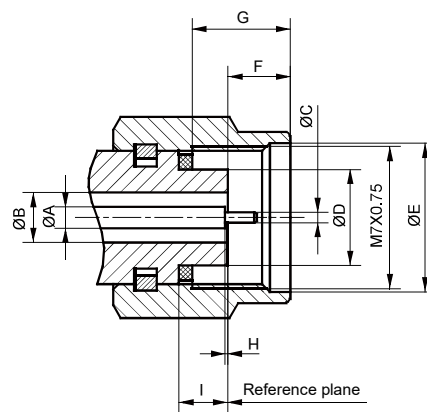
Mechanical endurance: 500 ops

IMPLEMENTATION CRITERIA

IEC 61169-40 GB/T 11313.40



INTERFACE DIMENSIONS

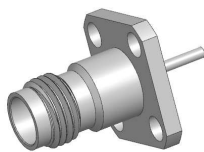


Male connector

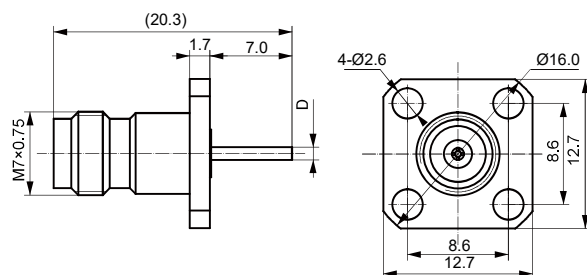
	Min(mm)	Max(mm)
A	1.032	1.054
B	2.388	2.412
C	0.506	0.523
D	4.725	4.75
E	7.01	7.11
F	1.85	2.45
G	4.34	4.66
H	/	0.076
I	3.38	3.48

Female connector

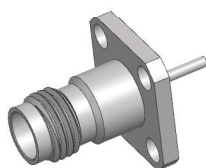
	Min(mm)	Max(mm)
A	1.032	1.054
B	2.388	2.412
C	4.77	4.795
D	5.79	5.89
E	1.37	1.63
F	4.80	5.06
G	5.80	/
H	0	0.076
I	3.00	3.10



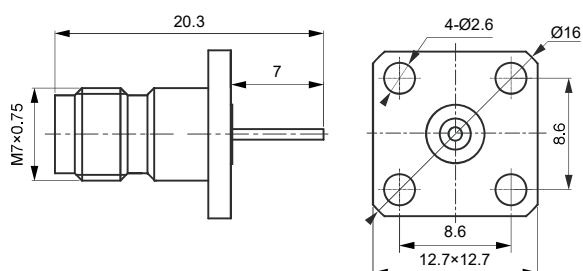
2.4-KFDG, etc



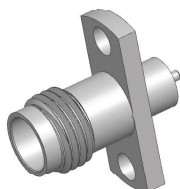
Type	D
2.4-KFDG	Ø0.8
2.4-KFDG-1	Ø1.04



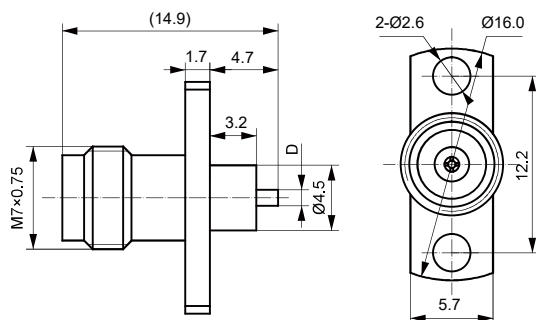
2.4-KFD2, etc



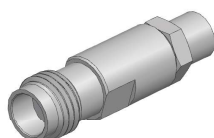
Type	Notes
2.4-KFD3	Connector tail microstrip size: Ø0.8×7
2.4-KFD2	Connector tail microstrip size: Ø1.04×7



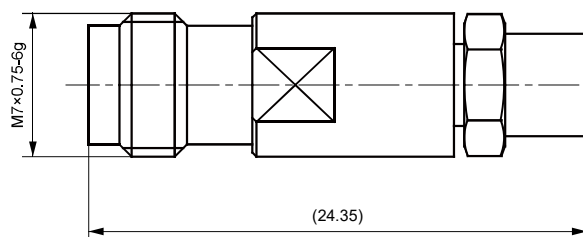
2.4-KFDG-2



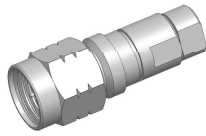
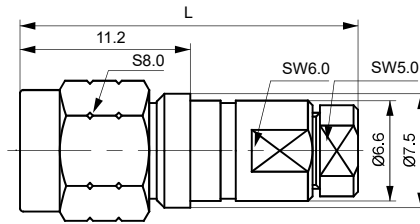
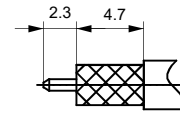
Type	D
2.4-KFDG-2	Ø0.8



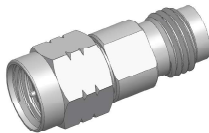
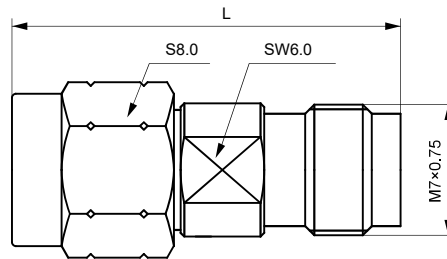
2.4-KB2G



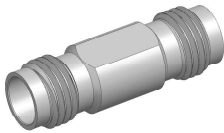
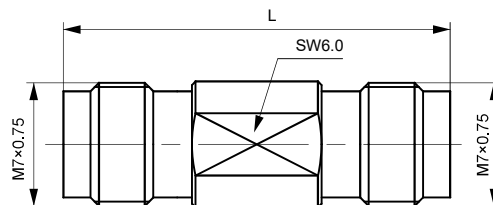
Type	Cable	Notes
2.4-KB2G	SMT680-086 or equivalent cable	Stainless steel

**2.4-J1401G****RECOMMENDED WIRE STRIPPING SIZE**

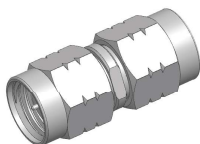
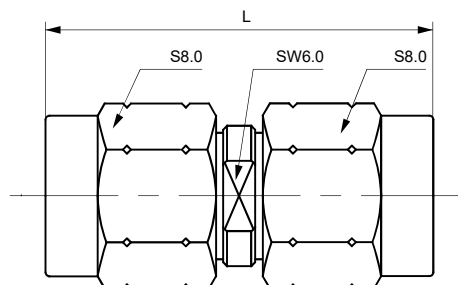
Type	L	Cable
2.4-J1401G	22.2	IW1401

**2.4-JKG**

Type	L
2.4-JKG	(20.4)

**2.4-KKG**

Type	L
2.4-KKG	21.5

**2.4-JJG**

Type	L
2.4-JJG	(19.3)

