

1.85 series

RF Coaxial Connector

FEATURES

- Can be interchanged with 2.4mm series products, using air-dielectric
- Small size, light weight, and operating frequency up to 65GHz
- Excellent electrical performance and high connection reliability

TECHNICAL PARAMETER

Temperature: - 65~+125°C

Impedance: 50Ω

Frequency: DC~65GHz

VSWR: $\leq 1.05 + 0.015F$

Insulation resistance: $\geq 5000M\Omega$

Dielectric strength: 500V(rms)

Operating Voltage: 250V (rms)

Contact resistance: Center contact: $\leq 5m\Omega$

Outer contact: $\leq 4m\Omega$

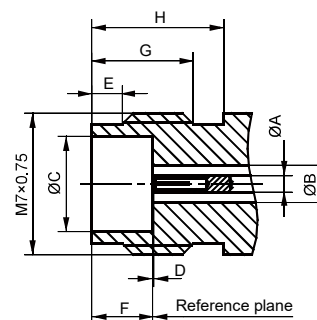
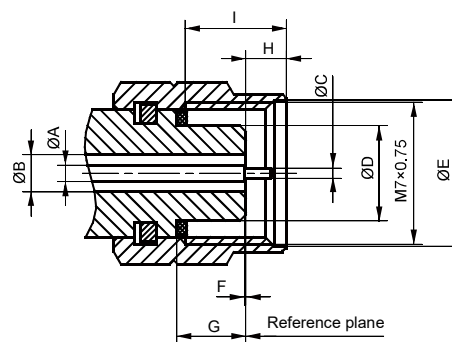
Mechanical endurance: 500 ops

IMPLEMENTATION CRITERIA

IEC60169-32 GB/T 11313.1-2013



INTERFACE DIMENSIONS

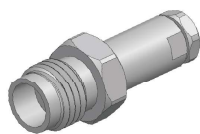


Male connector

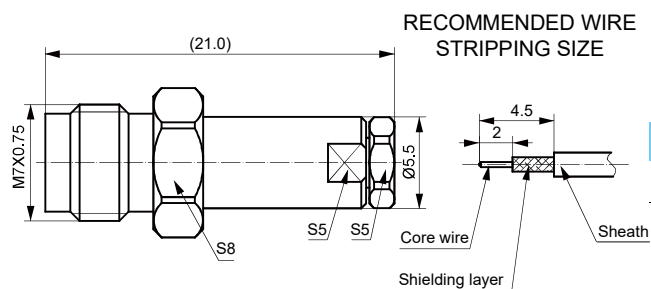
	Min(mm)	Max(mm)
A	0.7909	0.8163
B	1.8373	1.8627
C	0.498	0.523
D	4.725	4.750
E	7.01	7.11
F	/	0.0762
G	3.380	3.480
H	1.850	2.450
I	4.37	4.63

Female connector

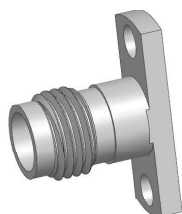
	Min(mm)	Max(mm)
A	0.7909	0.8163
B	1.8373	1.8627
C	4.77	4.795
D	0	0.0762
E	1.37	1.63
F	3.00	3.10
G	4.80	5.06
H	6.00	/



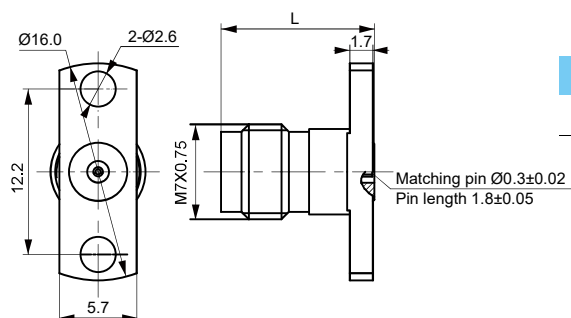
1.85-K3657G



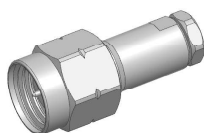
Type	L	Cable
1.85-K3657G	(21.0)	GXN3657



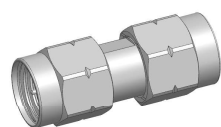
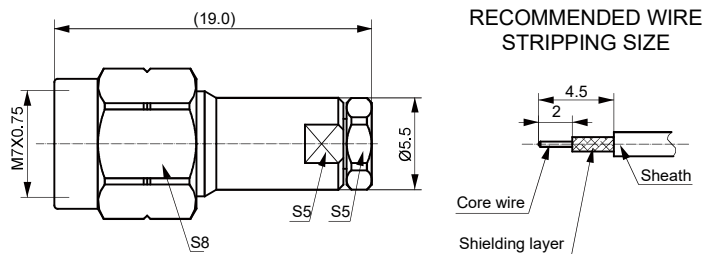
1.85-KFDG



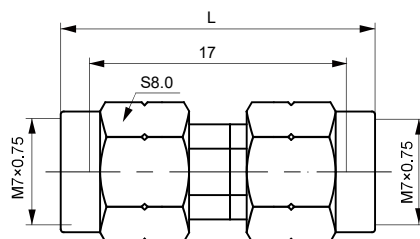
Type	L
1.85-KFDG	(11.3)



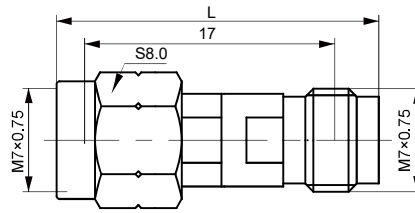
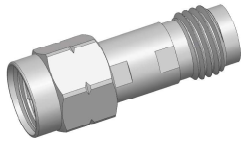
1.85-J3657G



1.85-JJG

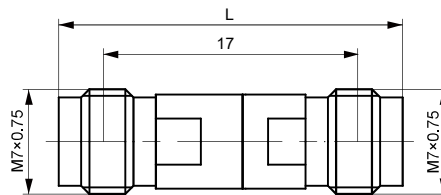


Type	L
1.85-JJG	(20.8)



Type	L
1.85-JKG	(21.9)

1.85-JKG



Type	L
1.85-KKG	(23.0)

1.85-KKG

