

BMA series

RF Coaxial Connector

FEATURES

- Blind insertion of a new type of RF coaxial connector
- Using air dielectric
- Small size, reliable contact, superior electrical and mechanical performance, and convenient docking
- It is suitable for the connection of various microwave circuits, especially for blind insertion of chassis and cabinets, and is conducive to the modularization of complete systems such as radars. It is currently widely used

TECHNICAL PARAMETER

Temperature: - 65~+125°C

Impedance: 50Ω

Frequency: DC~18GHz

VSWR: ≤1.15+0.012F

Insulation resistance: ≥5000MΩ

Dielectric strength: 750V(rms)

Operating Voltage: 330V (rms)

Contact resistance: Center contact: ≤3mΩ

Outer contact: ≤2mΩ

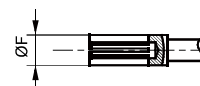
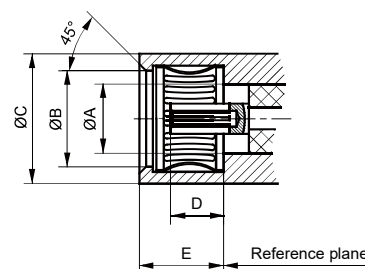
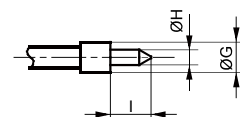
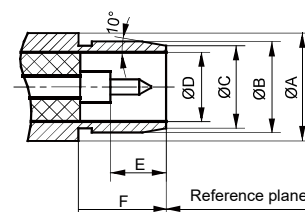
Mechanical endurance: 500 OPS

IMPLEMENTATION CRITERIA

IEC 61169-33 GB/T 11313.33



INTERFACE DIMENSIONS

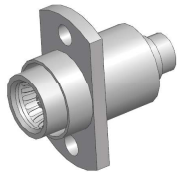
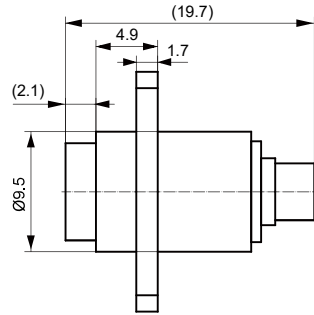
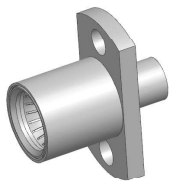
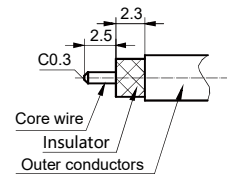
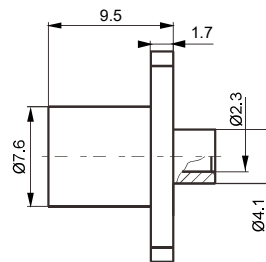
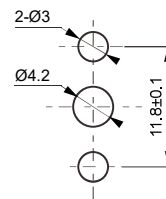


Male connector

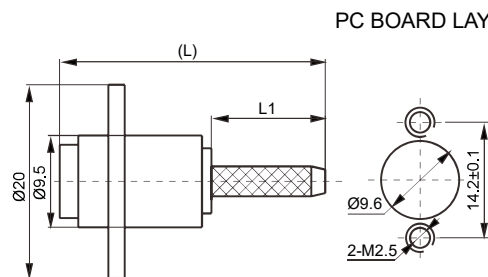
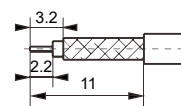
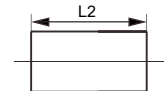
	Min(mm)	Max(mm)
A	7.62 Nominal value	
B	5.309	5.359
C	4.88 Nominal value	
D	4.09 Nominal value	
E	3.252	3.429
F	5.055	/
G	1.778 Nominal value	
H	0.902	0.940
I	2.159	2.413

Female connector

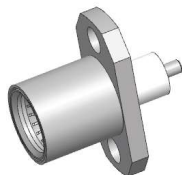
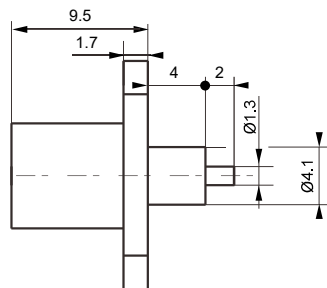
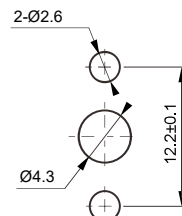
	Min(mm)	Max(mm)
A	4.09 Nominal value	
B	5.72	/
C	7.37	/
D	3.048	3.225
E	/	5.029
F	1.778 Nominal value	

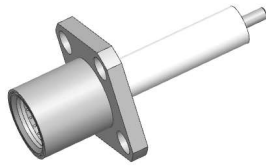
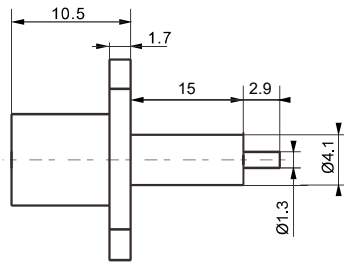
**BMA-KFB3****RECOMMENDED WIRE STRIPPING SIZE****BMA-KFB2-1****RECOMMENDED WIRE STRIPPING SIZE**

Type	Cable
BMA-KFB2-1	SFT-50-2-1

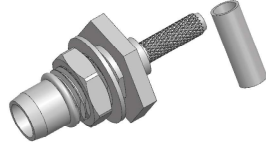
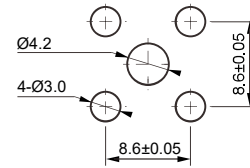
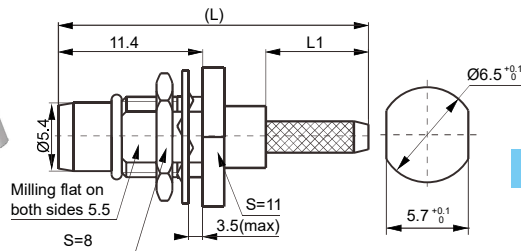
**BMA-KF3Y****PC BOARD LAYOUT****CABLE STRIPPING SIZE****CLAMP**

Type	Cable	L	L1	L2
BMA-KF3Y	SFF-50-1.5-1 SYV-50-2-1	22.4	5.5	6.5
BMA-KF4Y	SYV-50-2-2	26.4	10	10
BMA-KF5YG	SYV-50-3	26.4	10	12

**BMA-KFD-5****PC BOARD LAYOUT**

**BMA-KFD-7G**

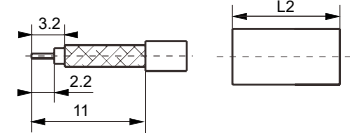
PC BOARD LAYOUT

**BMA-JY3Y**

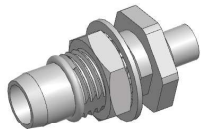
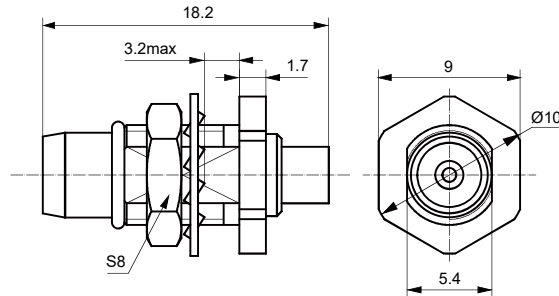
PC BOARD LAYOUT

CABLE STRIPPING SIZE

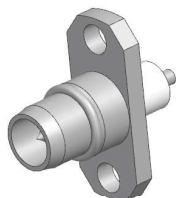
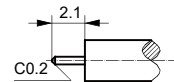
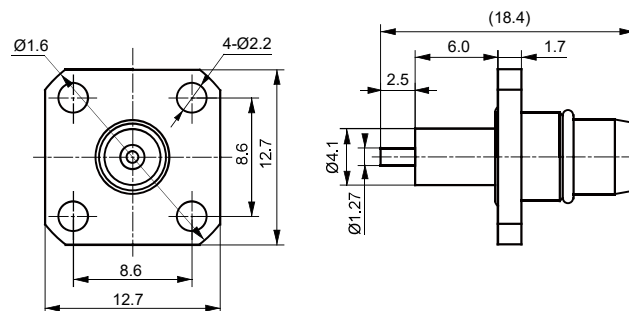
CLAMP

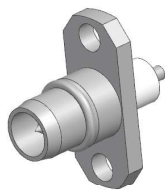
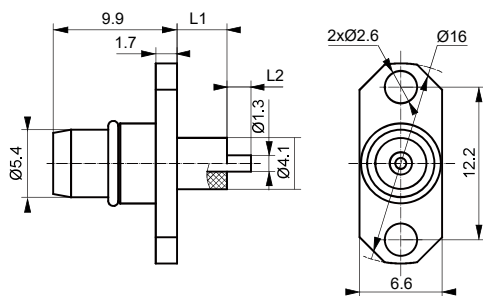


Type	Cable	L	L1	L2
BMA-JY3Y	SFF-50-1.5-1 SYV-50-2-1	23.1	5.5	6.5
BMA-JY4Y	SYV-50-2-2	23.1	8	10
BMA-JY5YG	SYV-50-3	23.1	10	12

**BMA-JYB2**

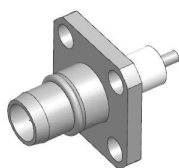
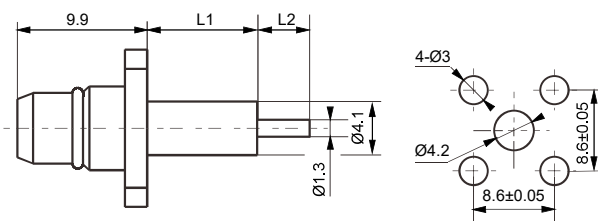
RECOMMENDED WIRE STRIPPING SIZE

**BMA-JFDG-5**

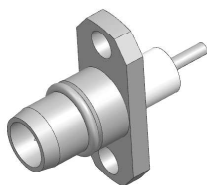
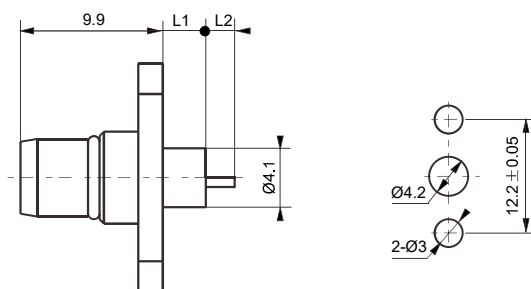
**BMA-JFDG**

Type	L	L1
BMA-JFDG	4.0	1.0
BMA-JFDG-1	4.0	7.5
BMA-JFDG-2	4.0	2.0

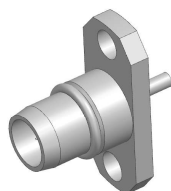
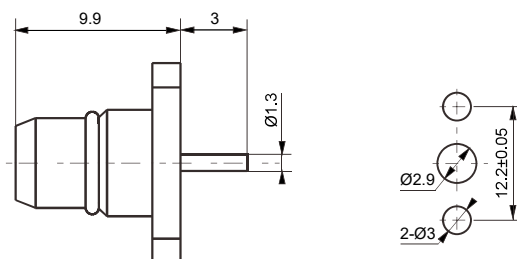
PC BOARD LAYOUT

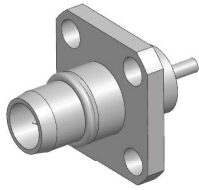
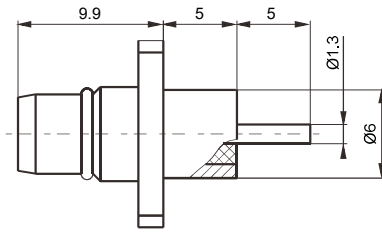
**BMA-JFD-10**

Type	L1	L2
BMA-JFD-10	8.4	4.0
BMA-JFDG-10	8.4	4.0
BMA-JFD-11	4.0	2.0
BMA-JFDG-11	4.0	2.0
BMA-JFD-12	8.4	3.0

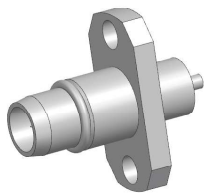
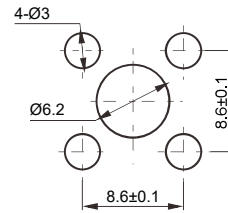
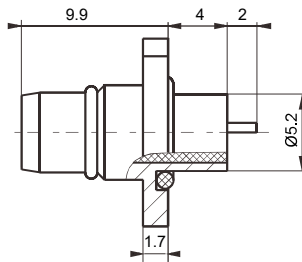
**BMA-JFD-13**

Type	L1	L2
BMA-JFD-13	5.0	2.0
BMA-JFD-14	3.0	2.0
BMA-JFDG-14	3.0	2.0

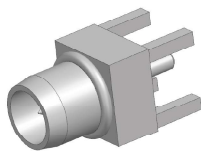
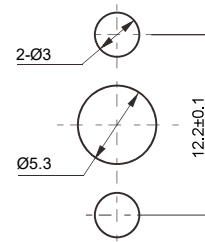
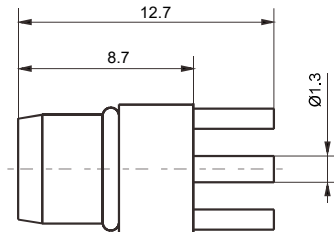
**BMA-JFD-15**

**BMA-JFDG-20**

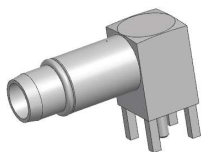
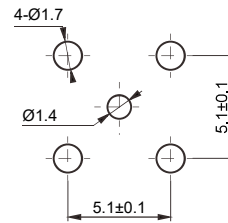
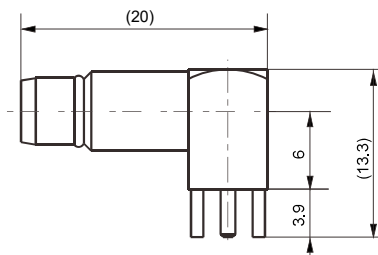
PC BOARD LAYOUT

**BMA-JFDG-23**

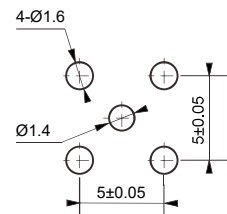
PC BOARD LAYOUT

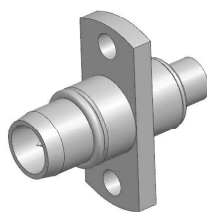
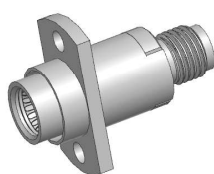
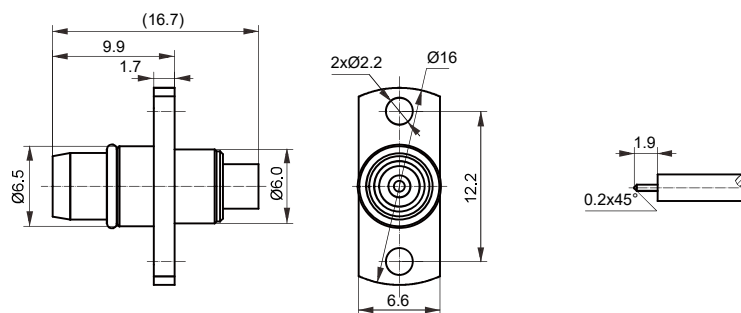
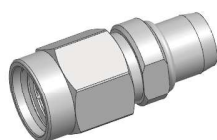
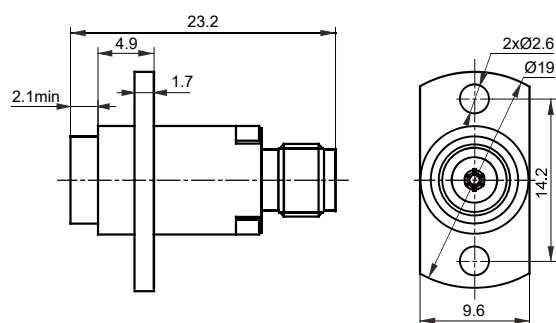
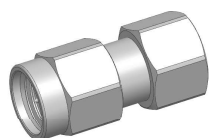
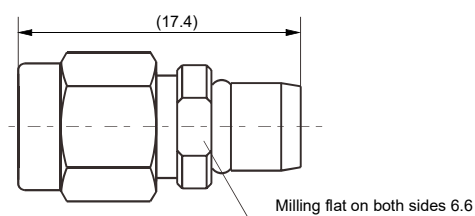
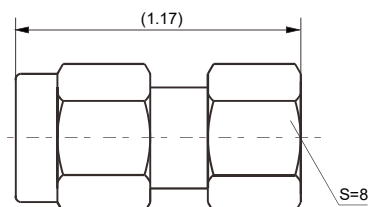
**BMA-JHD**

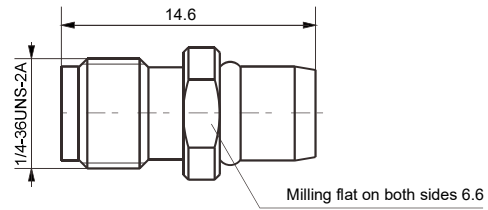
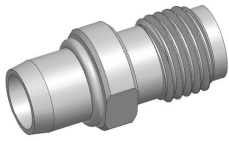
PC BOARD LAYOUT

**BMA-JWHD**

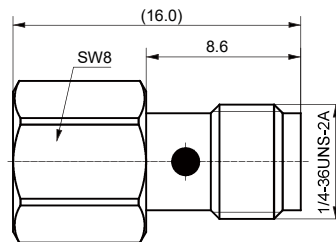
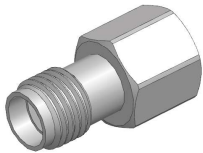
PC BOARD LAYOUT



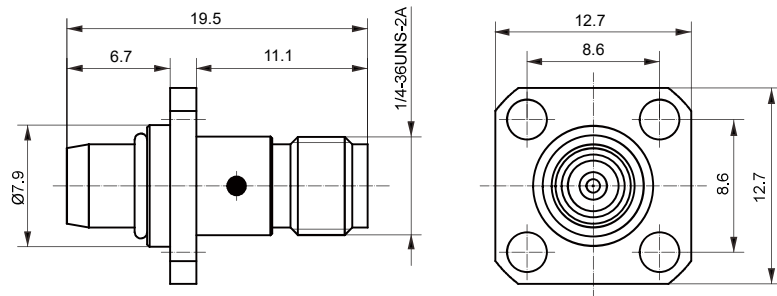
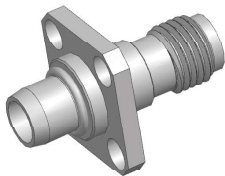
**BMA-JFB2G****BMA-SMA-KK****BMA/SMA-JJ****BMA/SMA-KJ**



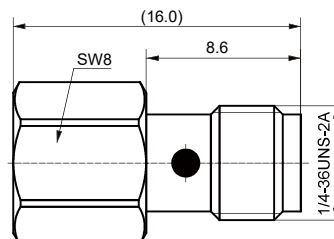
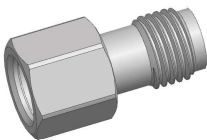
BMA/SMA-JK



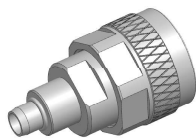
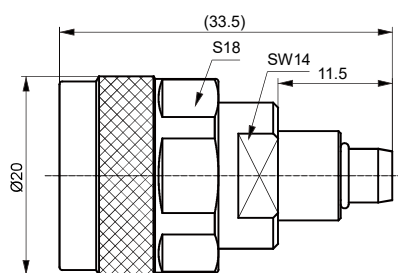
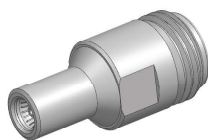
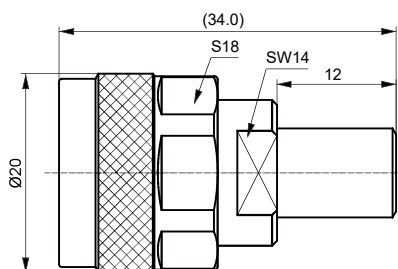
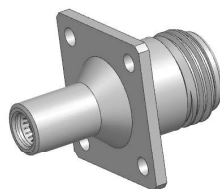
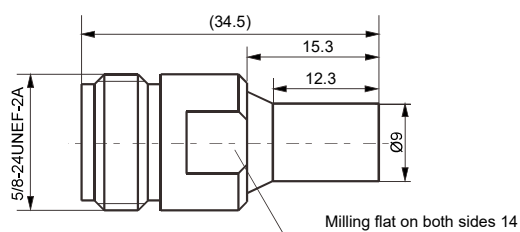
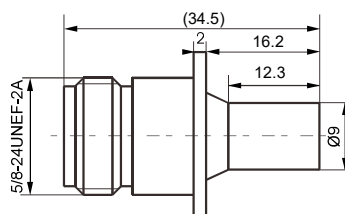
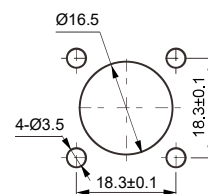
BMA/SMA-KK-1

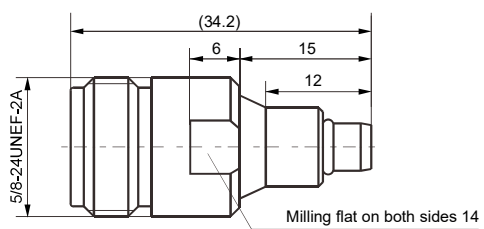
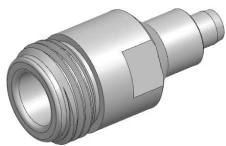


BMA/SMA-JFK



BMA/SMA-KKG-1

**N/BMA-JJ****N/BMA-JK****N/BMA-KK****N/BMA-KFK****PC BOARD LAYOUT**



N/BMA-KJ

