

MQ series

RF Coaxial Connector

FEATURES

- Circular multi-channel bundled RF coaxial connector
- Equipped with two connection methods: quick locking and threading
- Each channel can be simultaneously docked and separated at once
- Features such as waterproof tape free processing, good PIM, good VSWR performance, anti misinsertion, and adaptive alignment
- Applied to mobile communication devices and similar scenarios that require multiple RF signal connections

TECHNICAL PARAMETER

Temperature: $-40^{\circ}\text{C} \sim +85^{\circ}\text{C}$

Impedance: 50Ω

Frequency: $\text{DC} \sim 6.0\text{GHz}$

Insulation resistance: $\geq 5000\text{M}\Omega$

Dielectric strength: 1000V(rms)

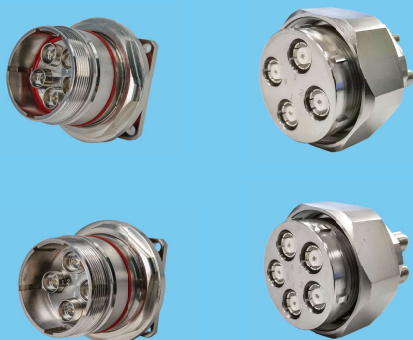
Contact resistance: Mechanical endurance: $\leq 5.0\text{m}\Omega$

Outer contact: $\leq 3.0\text{m}\Omega$

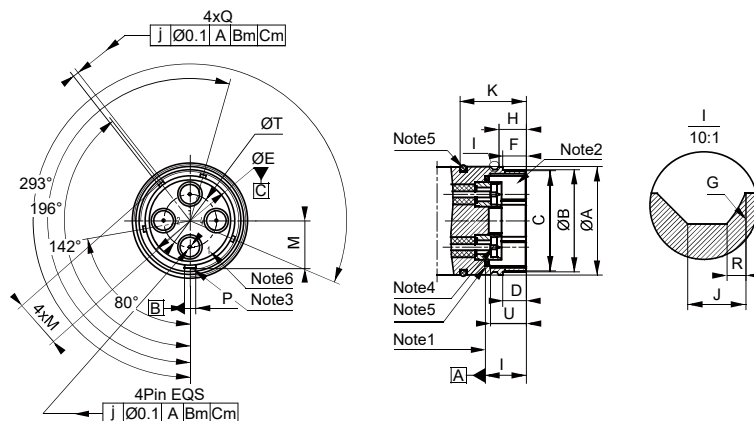
Mechanical endurance: 100 OPS

IMPLEMENTATION CRITERIA

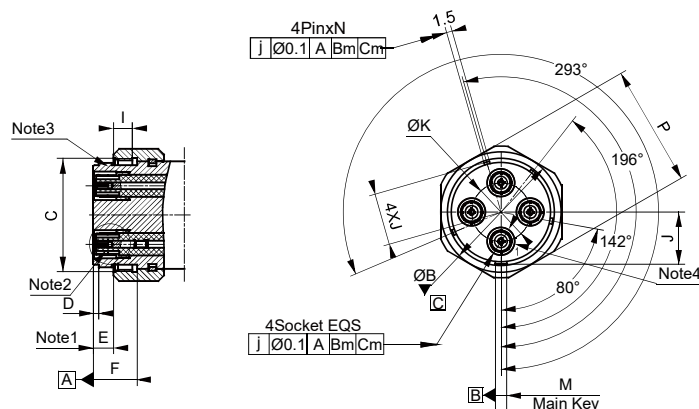
IEC 63138-1/IEC 63138-2



INTERFACE DIMENSIONS



MQ4 Male connector



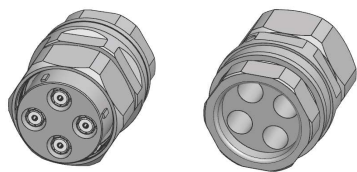
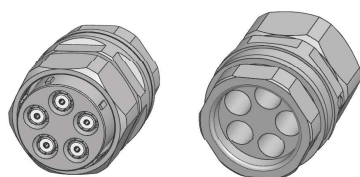
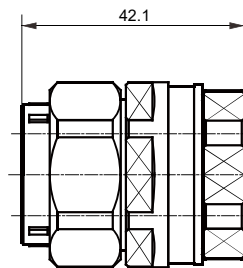
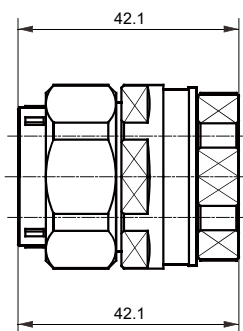
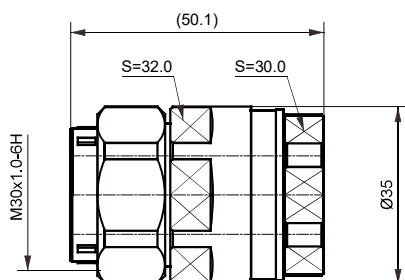
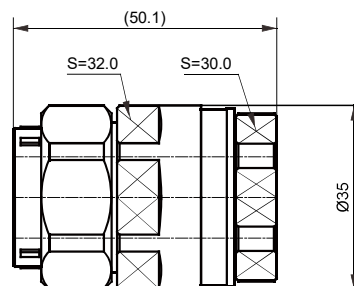
MQ4 Female connector

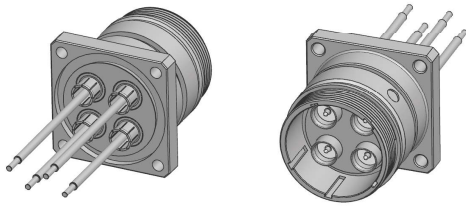
Male connector

	Min(mm)	Max(mm)
A	31.75	31.8
B	30.35	30.4
C	M30x1.0-6h	
D	6.8	7
E	26.42	26.48
F	6	6.1
G	R3.0 nom.	
H	7.95	8.05
I	10.95	11
J	1.5	1.8
K	19.3	19.45
M	14	14.1
P	3.2	3.35
Q	1.6	1.75
R	0.5	0.6
T	15.48	15.52
U	10.5	10.6

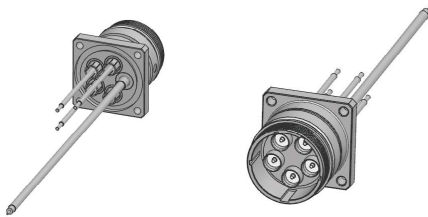
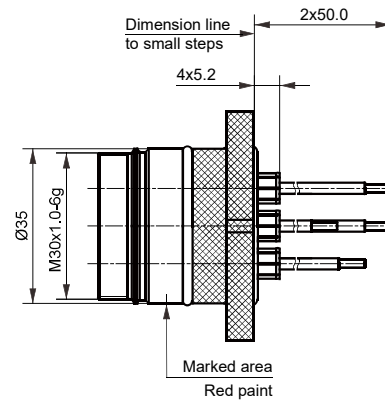
Female connector

	Min(mm)	Max(mm)
A	7.52	7.58
B	26.35	26.4
C	M30x1.0-6G	
D	1.2	1.5
E	5.2	5.6
F	11.2	--
I	7	--
J	13.7	13.85
K	15.48	15.52
M	3	3.15
N	1.4	1.55
P	32.0 nom	

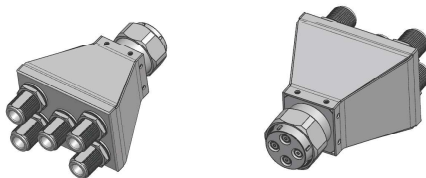
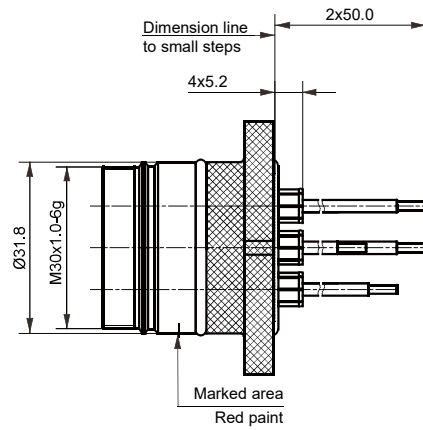
**MQ4-KB5****MQ5-KB5****MQ4-K501****MQ5-K501**



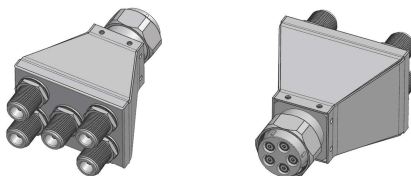
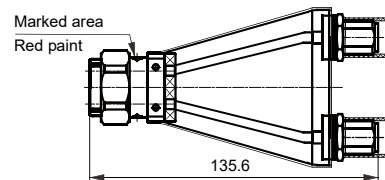
MQ4-JFD



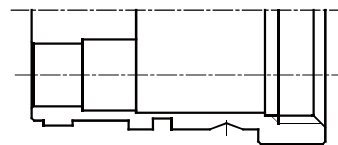
MQ5-JFD

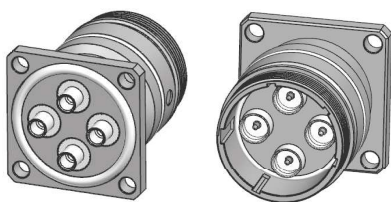
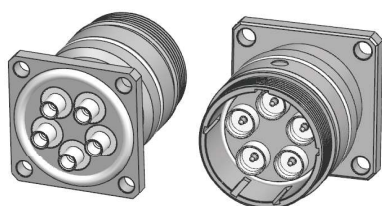
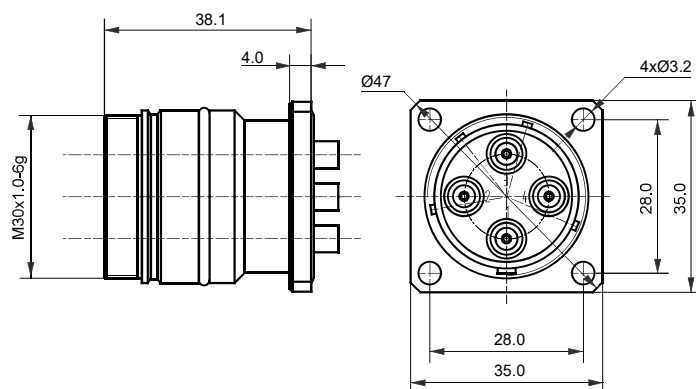


MQ4-KF+N-KY-135.6



MQ5-KF+N-KY-135.6



**MQ4-JFB3-2****MQ5-JFB3-2**