

# SMB series

## RF Coaxial Connector

### FEATURES

- A small push-in RF coaxial connector developed according to the US military standard MIL-C-39012
- Small size, reliable contact, convenient maintenance, and high degree of standardization
- Widely used for the transmission of RF signals in high-frequency circuits in radio equipment and instruments

### TECHNICAL PARAMETER

Temperature: - 65~+165°C

Impedance: 50Ω、75Ω

Frequency: DC~4GHz

VSWR: ≤1.35(Straight)

Insulation resistance: ≥1000MΩ

Dielectric strength: 750V(rms)

Operating Voltage: 250V(rms)

Contact resistance:

50Ω: Center content: ≤6mΩ

Outer contact: ≤1mΩ

75Ω: Center content: ≤5mΩ

Outer contact: ≤2.5mΩ

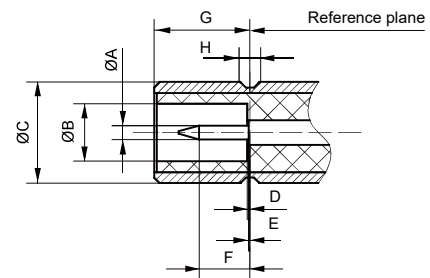
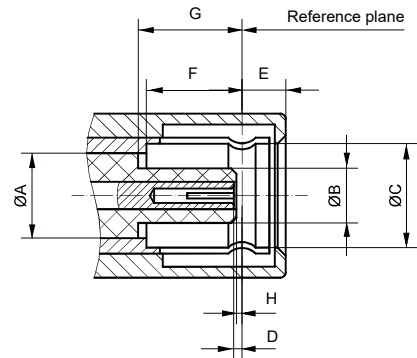
Mechanical endurance: 500 OPS

### IMPLEMENTATION CRITERIA

IEC 60169-10 GB/T 11313.10



### INTERFACE DIMENSIONS

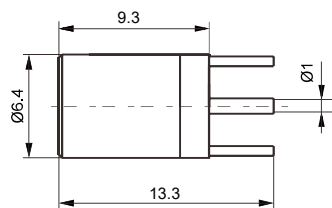
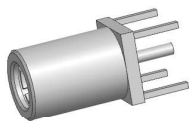


#### Male connector

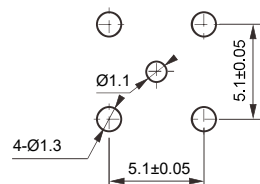
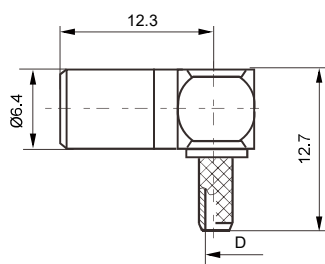
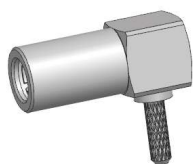
	Min(mm)	Max(mm)
A	3.05 Nominal value	
B	2	2.06
C	/	/
D	0.18	0.94
E	/	1.63
F	3.58	/
G	3.58	/
H	/	0.18

#### Female connector

	Min(mm)	Max(mm)
A	0.48	0.53
B	2.08	/
C	3.66	3.71
D	/	0.18
E	/	0.18
F	/	2.97
G	3.33	3.58
H	0.69	0.94

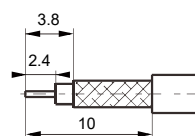
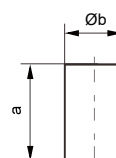
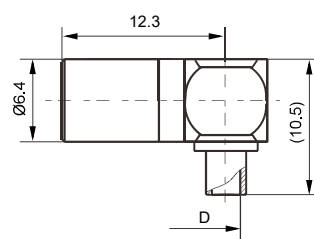
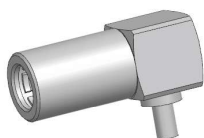


PC BOARD LAYOUT

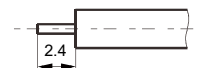
**SMB-KHD**

CLAMP

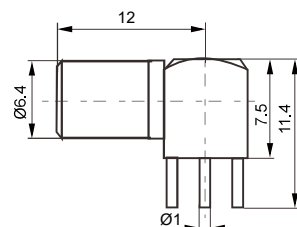
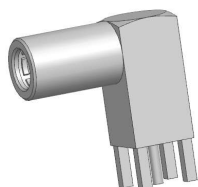
CABLE STRIPPING SIZE

**SMB-KW2Y**

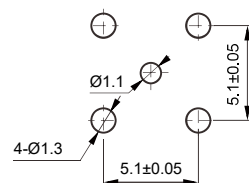
CABLE STRIPPING SIZE

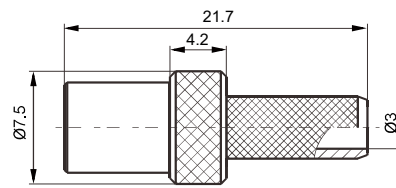
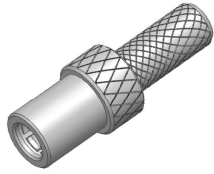


Type	D	Cable
SMB-KWB1	Ø1.2	SFT-50-1
SMB-KWB2	Ø2.2	SFT-50-2-1
SMB-KWB3	Ø3.6	SFT-50-3-1

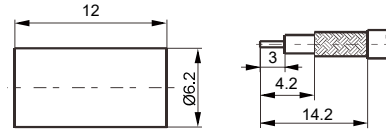
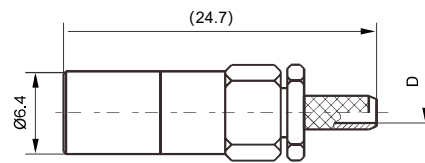
**SMB-KWB1, etc**

PC BOARD LAYOUT

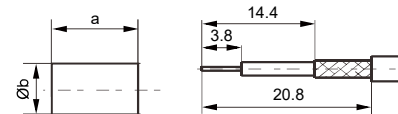
**SMB-KWHD**



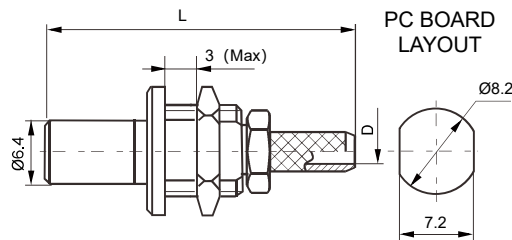
CLAMP CABLE STRIPPING SIZE

**SMB-K195**

CLAMP CABLE STRIPPING SIZE

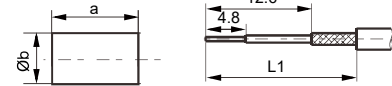


Type	A	B	D	Cable
SMB-K2A	6	3.1	Ø0.9	SFF-50-1
				SYV-50-1
SMB-K3A	6.5	3.9	Ø1.6	SFF-50-1.5-1
				SYV-50-2-1

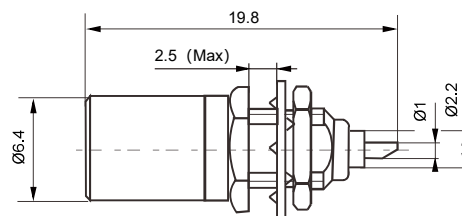
**SMB-K2Y-1, etc**

PC BOARD LAYOUT

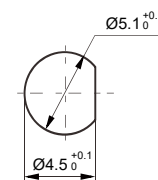
CLAMP CABLE STRIPPING SIZE

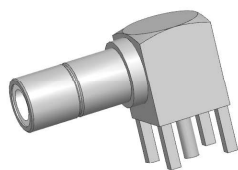


Type	A	B	L	D	L1	Cable
SMB-KY2	6	3.1	23.1	Ø0.9	18	SFF-50-1
						SYV-50-1
SMB-KY3	6.5	3.9	24.1	Ø1.6	19	SFF-50-1.5-1
						SYV-50-2-1

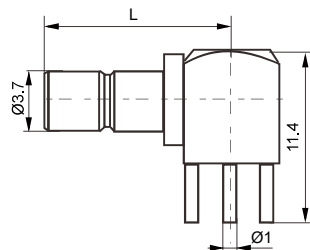
**SMB-KY2Y, etc**

PC BOARD LAYOUT

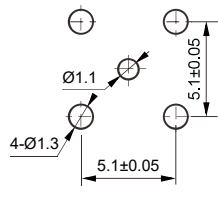
**SMB-KYD**



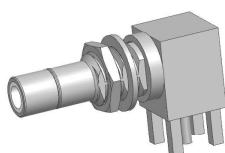
SMB-JWHD, etc



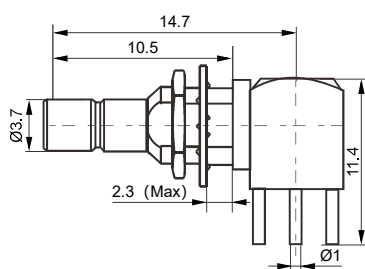
PC BOARD LAYOUT



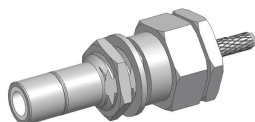
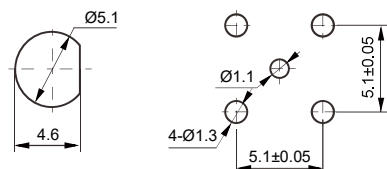
Type	L
SMB-JWHD	12.3
SMB-JWHD1	10.3
SMB-JWHD3	10.3
SMB-JWHD4	12.3



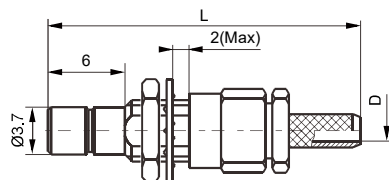
SMB-JWHY1



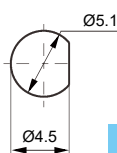
PC BOARD LAYOUT



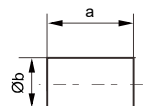
SMB-JY2Y, etc



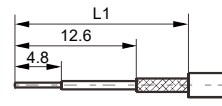
PC BOARD LAYOUT



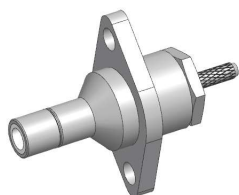
CLAMP



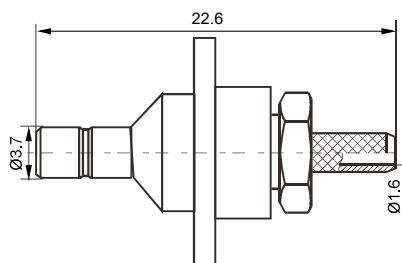
CABLE STRIPPING SIZE



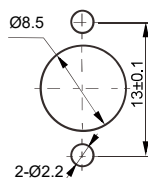
Type	A	B	L	L1	D	Cable
SMB-JY2Y	6	3.1	23.4	18	Ø0.9	SFF-50-1
						SYV-50-1
SMB-JY3Y	6.5	3.9	24.4	19	Ø1.6	SFF-50-1.5-1
						SYV-50-2-1



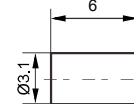
SMB-JF3Y



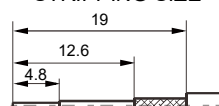
PC BOARD LAYOUT



CLAMP

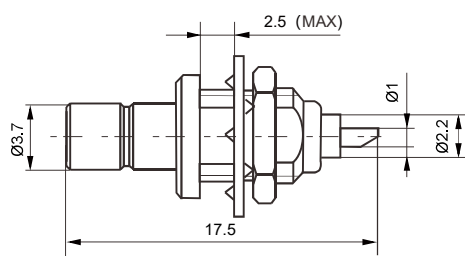
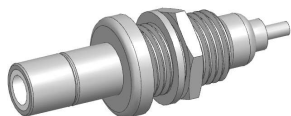


CABLE STRIPPING SIZE

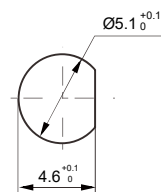
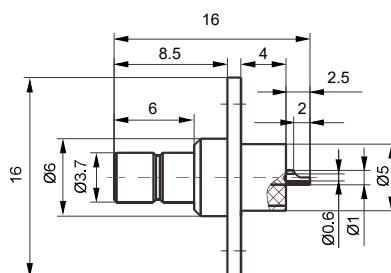
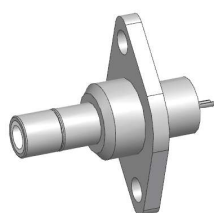


Type	Cable
SMB-JF3	SFF-50-1.5-1, SYV-50-2-1

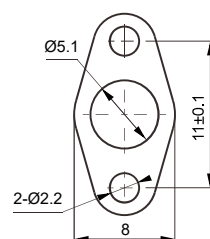
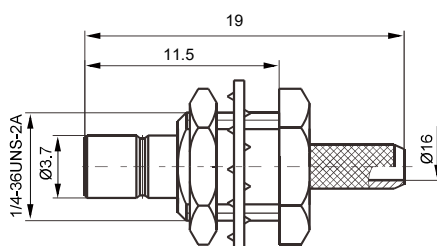
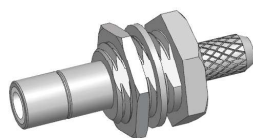




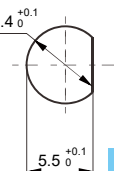
PC BOARD LAYOUT

**SMB-JYD-1**

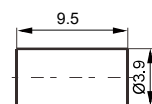
FLANGE SIZE

**SMB-JFD-4**

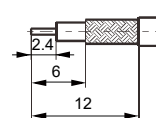
PC BOARD LAYOUT



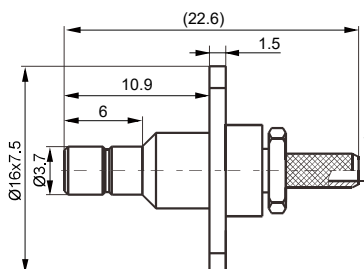
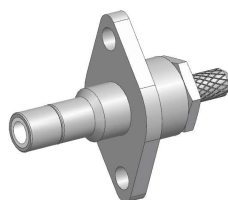
CLAMP



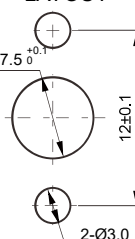
CABLE STRIPPING SIZE

**SMB-J3Y-1**

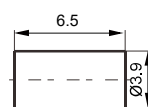
Type	Cable
SMB-J3Y-1	RG316



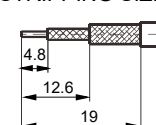
PC BOARD LAYOUT



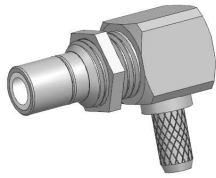
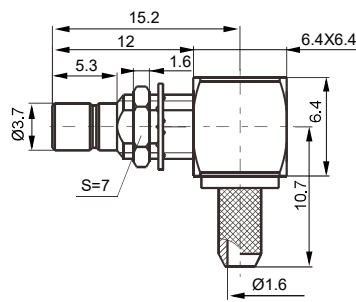
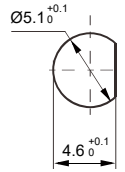
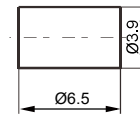
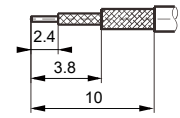
CLAMP



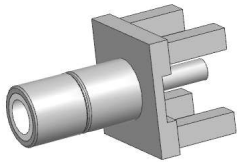
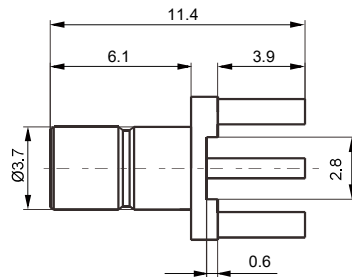
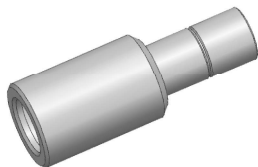
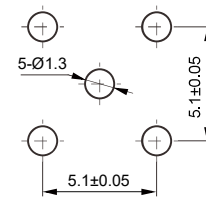
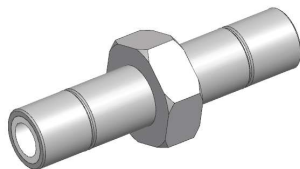
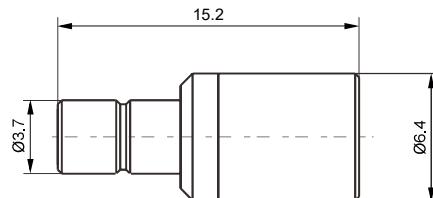
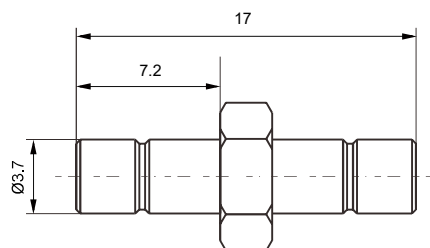
CABLE STRIPPING SIZE

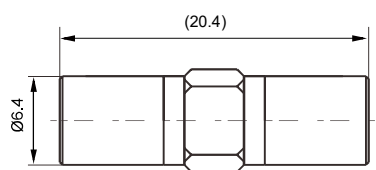
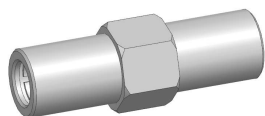
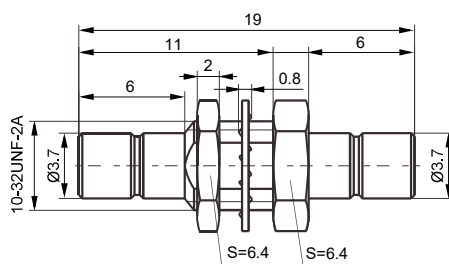
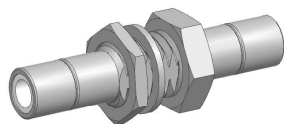
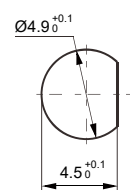
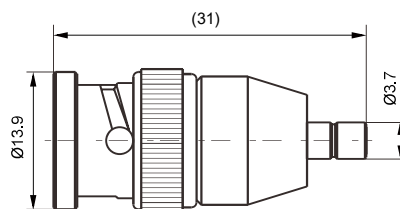
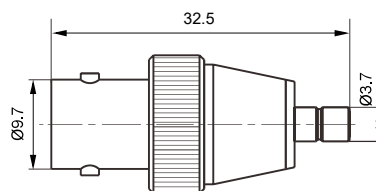
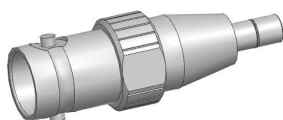
**SMB-JF3Y-1**

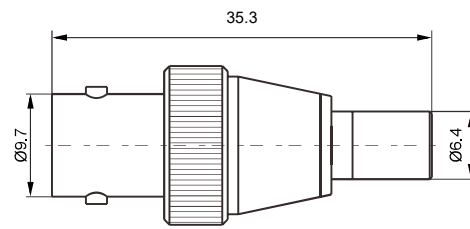
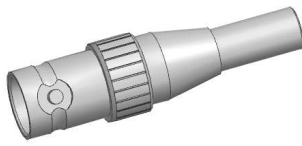
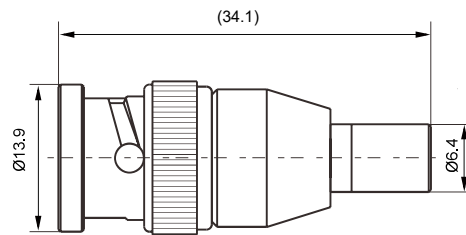
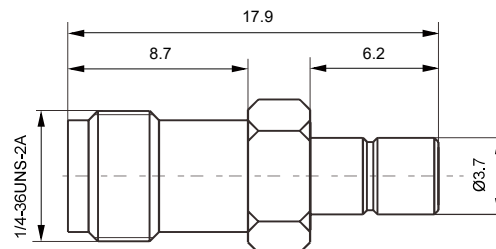
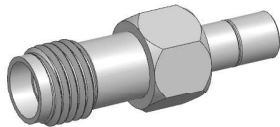
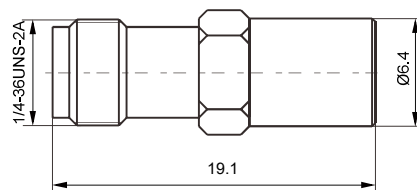
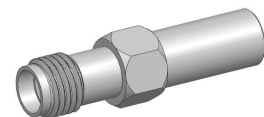
Type	Cable
SMB-JF3Y-1	SFF-50-1.5-1

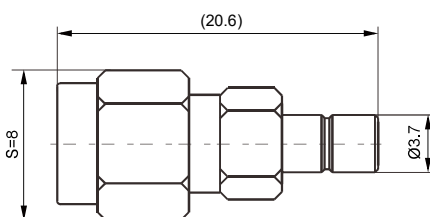
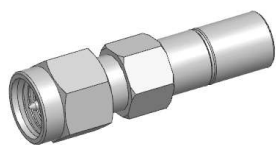
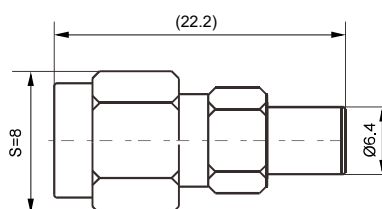
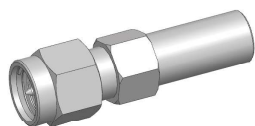
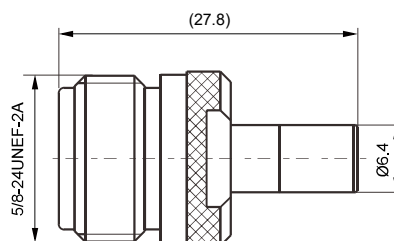
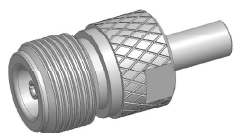
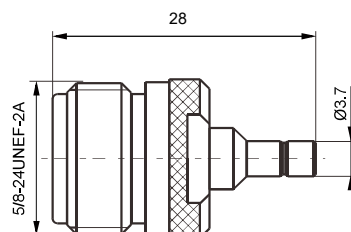
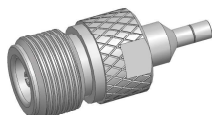
**SMB-JWY3Y****PC BOARD LAYOUT****CLAMP****CABLE STRIPPING SIZE**

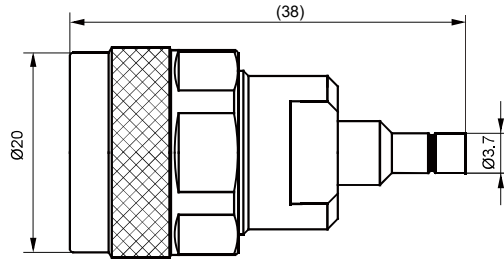
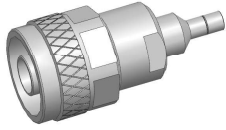
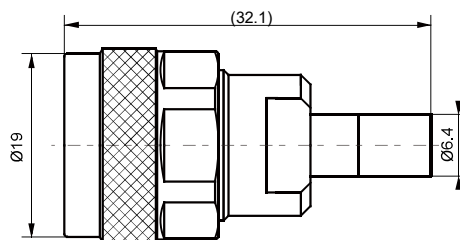
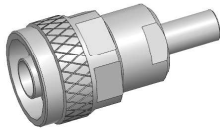
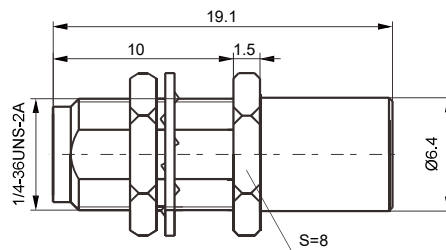
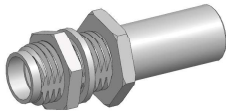
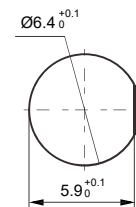
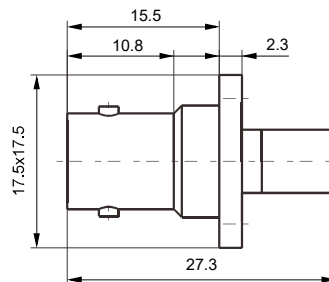
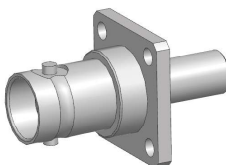
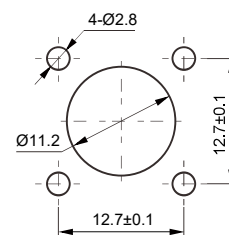
Type	Cable
SMB-JWY3Y	SFF-50-1.5-1

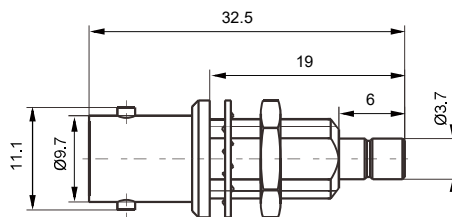
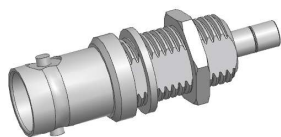
**SMB-JHD-1****PC BOARD LAYOUT****SMB-JK****SMB-JJ**

**SMB-KK****PC BOARD LAYOUT****SMB-JYJ****BNC/SMB-JJ****BNC/SMB-KJ**

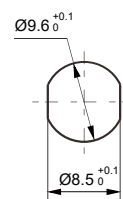
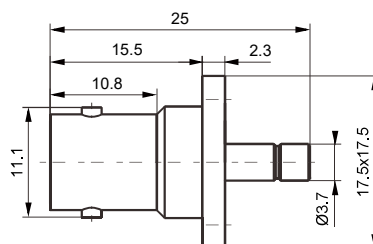
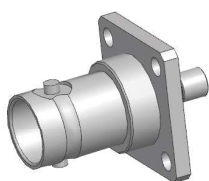
**BNC/SMB-KK****BNC/SMB-JK****SMA/SMB-KJ****SMA/SMB-KK**

**SMA/SMB-JJ****SMA/SMB-JK****N/SMB-KK****N/SMB-KJ**

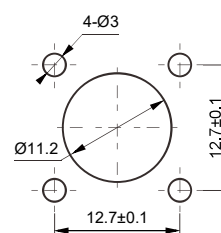
**N/SMB-JJ****N/SMB-JK****PC BOARD LAYOUT****SMA/SMB-KYK****PC BOARD LAYOUT****BNC/SMB-KFK**



PC BOARD LAYOUT

**BNC/SMB-KYJ**

PC BOARD LAYOUT

**BNC/SMB-KFJ**