

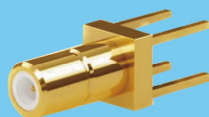
# SSMB series

## RF Coaxial Connector

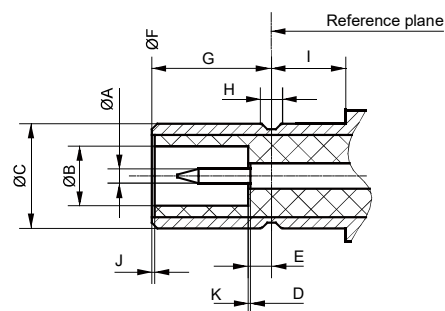
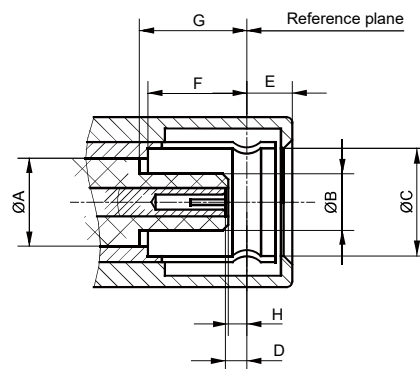
## FEATURES

## TECHNICAL PARAMETER

## IMPLEMENTATION CRITERIA



## INTERFACE DIMENSIONS

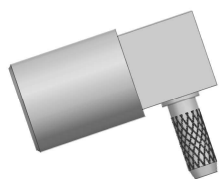


### Male connector

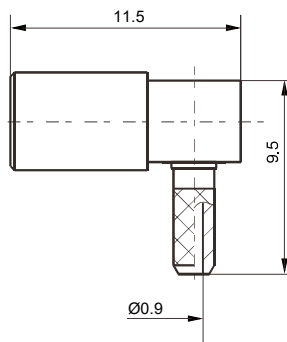
	Min(mm)	Max(mm)
<b>A</b>	2.11 Nominal value	
<b>B</b>	/	1.35
<b>C</b>	2.74	/
<b>D</b>	0.84	/
<b>E</b>	/	1.78
<b>F</b>	3.10	/
<b>G</b>	3.10	/
<b>H</b>	0.84	/

### Female connector

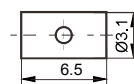
	Min(mm)	Max(mm)
<b>A</b>	0.35	0.38
<b>B</b>	1.37	/
<b>C</b>	/	2.69
<b>D</b>	0.00	/
<b>E</b>	/	0.84
<b>F</b>	/	1.91
<b>G</b>	/	3.10
<b>H</b>	0.71	0.74
<b>I</b>	1.91	/
<b>J</b>	0.00	/



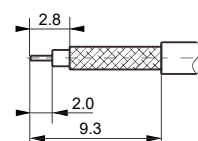
SSMB-KW2Y



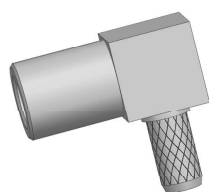
CLAMP



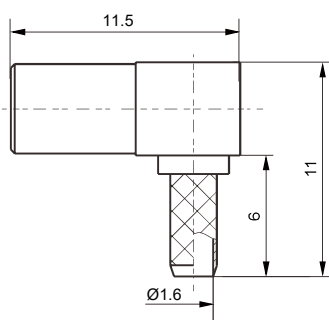
CABLE STRIPPING SIZE



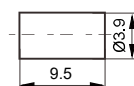
Type	Cable
SSMB-KW2	SFF-50-1, SYV-50-1



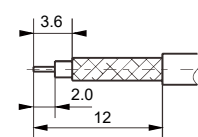
SSMB-KW3Y



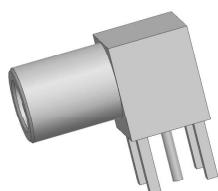
CLAMP



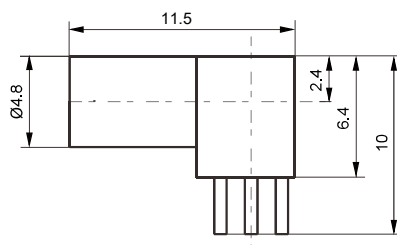
CABLE STRIPPING SIZE



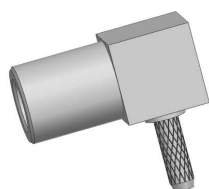
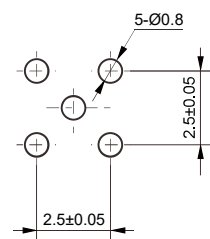
Type	Cable
SSMB-KW3	SFF-50-1.5-1, SYV-50-2-1



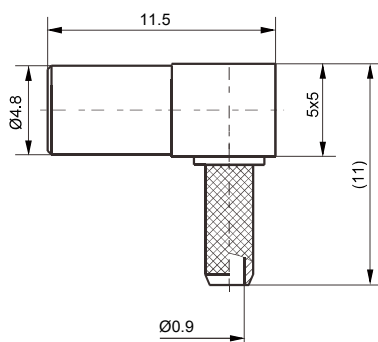
SSMB-KWHD



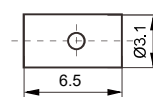
PC BOARD LAYOUT



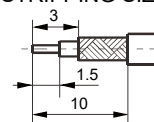
SSMB-KW2Y-1



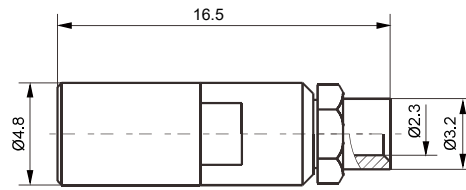
CLAMP



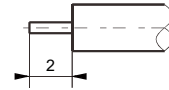
CABLE STRIPPING SIZE



Type	Cable
SSMB-KW2Y-1	SFF-50-1, SYV-50-1

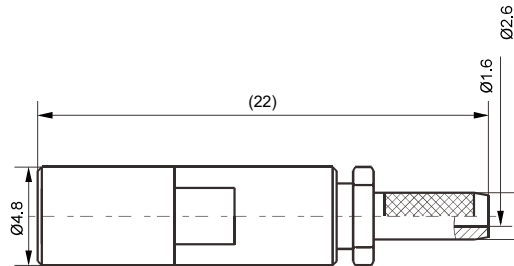
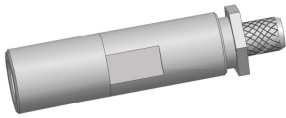


CABLE STRIPPING SIZE

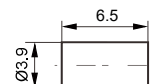


Type	Cable
SSMB-KB2	SFF-50-2-1

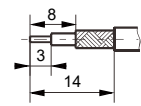
SSMB-KB2



CLAMP

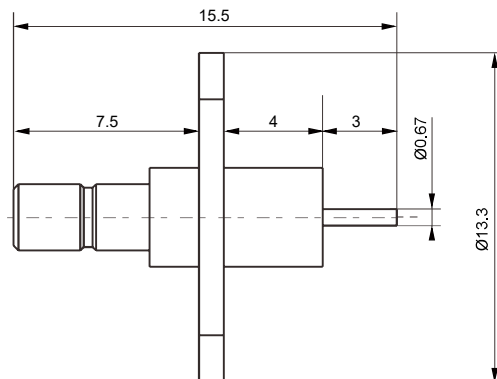
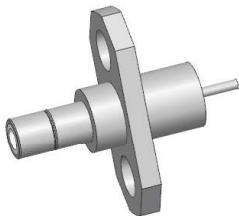


CABLE STRIPPING SIZE

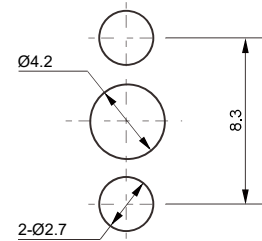


Type	Cable
SSMB-K3Y	SFF-50-1, SYV-50-2-1

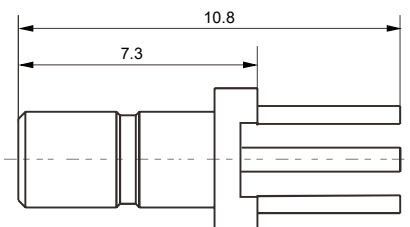
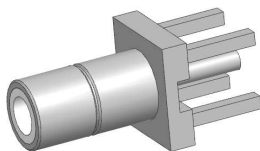
SSMB-K3Y



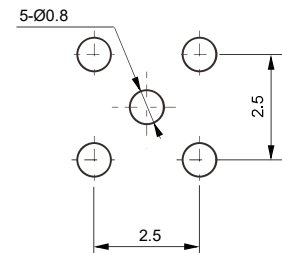
PC BOARD LAYOUT



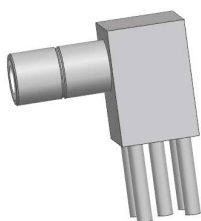
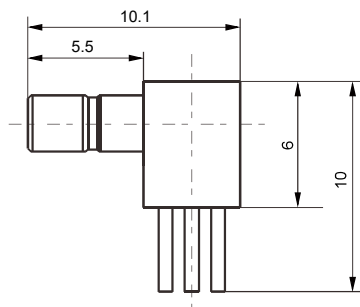
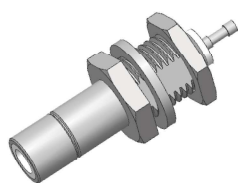
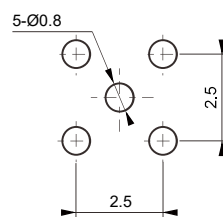
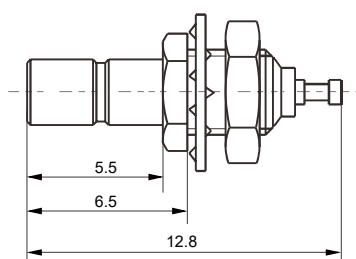
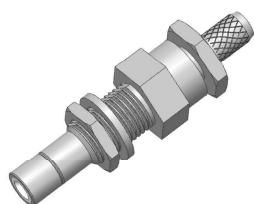
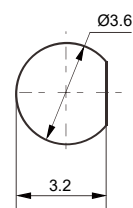
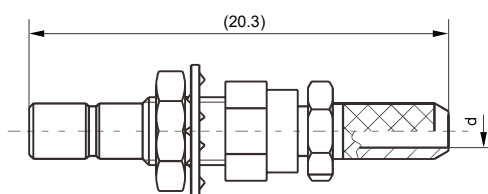
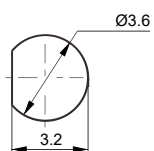
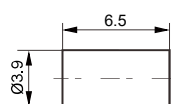
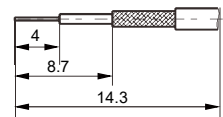
SSMB-JFD



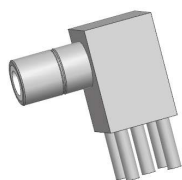
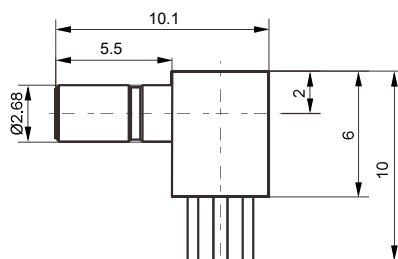
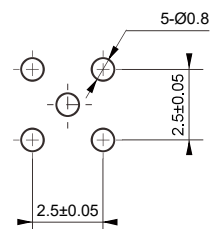
PC BOARD LAYOUT

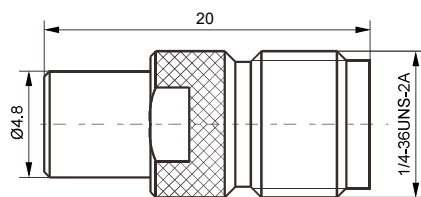
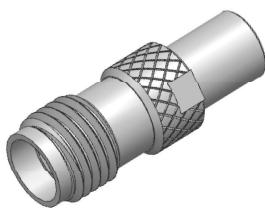


SSMB-JHD

**SSMB-JWHD****PC BOARD LAYOUT****SSMB-JYD****PC BOARD LAYOUT****SSMB-JY2Y****PC BOARD LAYOUT****CLAMP****CABLE STRIPPING SIZE**

Type	D	Cable
SSMB-JY2Y	Ø16	SFF-50-1.5-1
		SYV-50-2-1
SSMB-JY3Y	Ø1	SFF-50-1
		SYV-50-1

**SSMB-JWHD-1****PC BOARD LAYOUT**



**SMA/SSMB-KK**

