

MCX series

RF Coaxial Connector

FEATURES

- Small size, light weight, easy to use, and excellent electrical performance,
- Widely used in various equipment and fields with special requirements for installation volume

TECHNICAL PARAMETER

Temperature: - 65~+155°C

Impedance: 50Ω, 75Ω

Frequency: DC~6GHz

VSWR: ≤1.35(Straight)

插损: 0.1dB@1GHz

Insulation resistance: ≥1000MΩ

Dielectric strength: 750V(rms)

Operating Voltage: 250V(rms)

Contact resistance: Center content: ≤5mΩ
Outer contact: ≤2.5mΩ

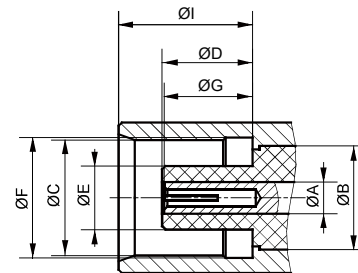
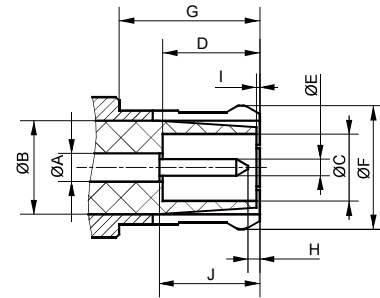
Mechanical endurance: 500 ops

IMPLEMENTATION CRITERIA

IEC 61169-36 GB/T 11313.36



INTERFACE DIMENSIONS

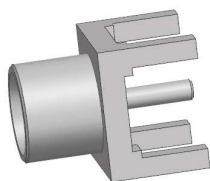


Male connector

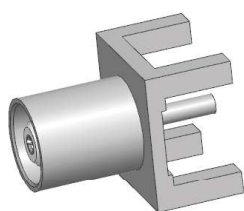
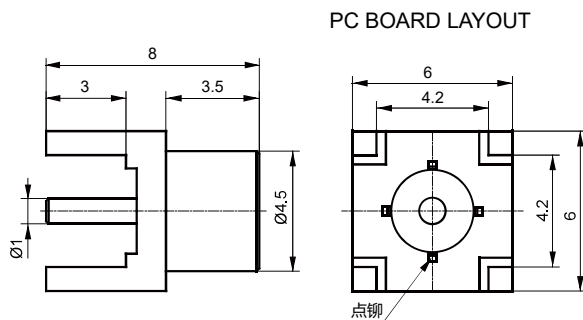
	Min(mm)	Max(mm)
A	/	/
B	3.05 Nominal value	
C	2.00	/
D	2.80	/
E	0.48	0.53
F	/	3.80
G	4.15	/
H	0.15	/
I	0.00	0.30
J	2.80	3.20

Female connector

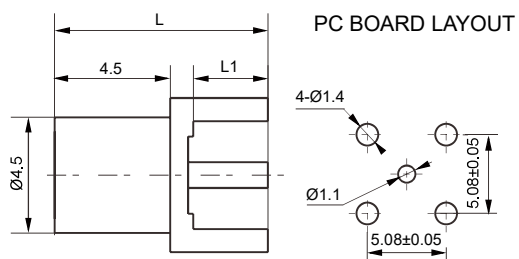
	Min(mm)	Max(mm)
A	/	/
B	3.05 Nominal value	
C	3.42	3.48
D	2.60	2.80
E	/	0.98
F	3.60	3.75
G	2.30	2.80
H	/	/
I	4.00	4.12
J	/	/



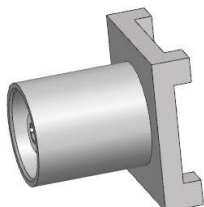
MCX-KHE-1



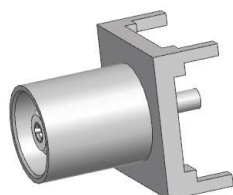
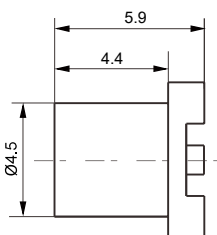
MCX-KHD



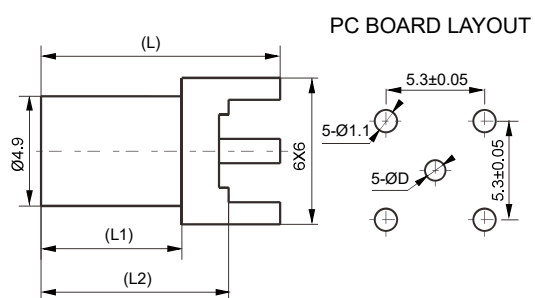
Type	L	L1
MCX-KHD	8.3	3
MCX-KHD1	9.3	4
MCX-KHD2	7.1	1.8
MCX-KHD3	11.3	3.9
MCX-KHD4	9.5	3.4



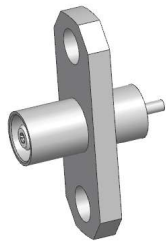
MCX-KHD5



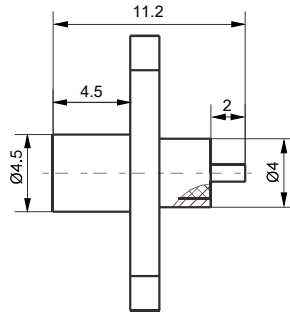
MCX-KHD7



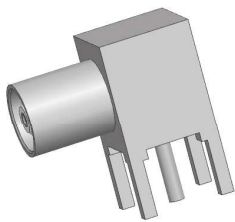
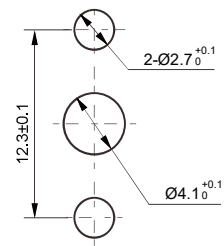
Type	L	L1	L2	L1
MCX-KHD7	9.7	6.5	8.2	$\varnothing 1.1$
MCX-KHD8	7	3.8	5.5	$\varnothing 1.1$
MCX-KHD9	8.2	5	6.7	$\varnothing 1.1$



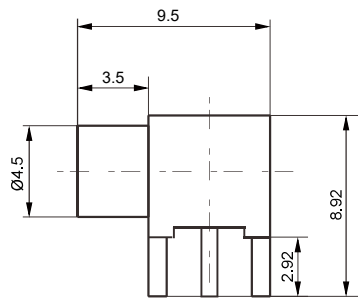
MCX-KFD



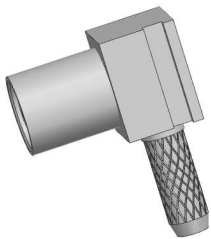
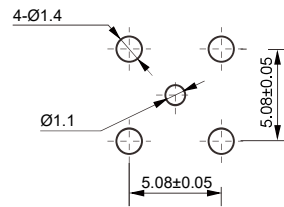
PC BOARD LAYOUT



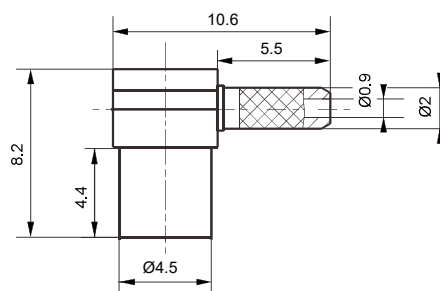
MCX-KWHD



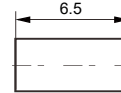
PC BOARD LAYOUT



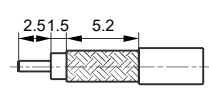
MCX-KW2Y



CLAMP



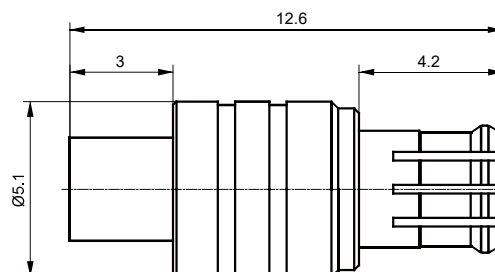
CABLE STRIPPING SIZE

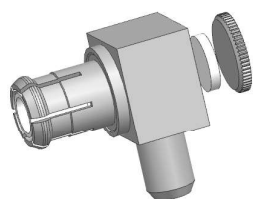


Type	Cable
MCX-KW2	SFF-50-1, SYV-50-1

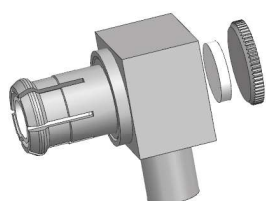
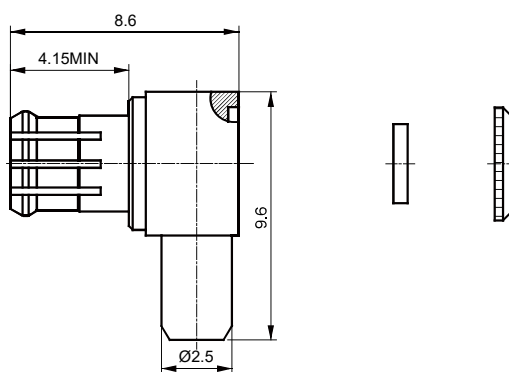


MCX-JB2

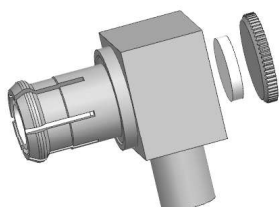
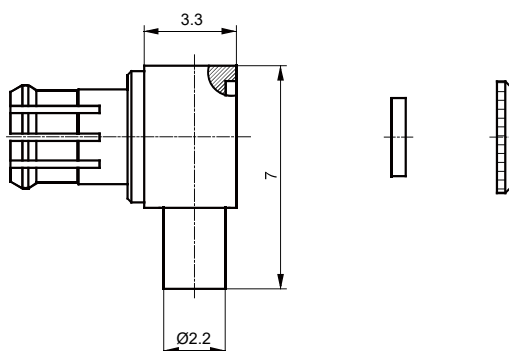




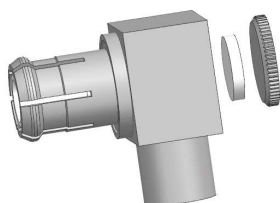
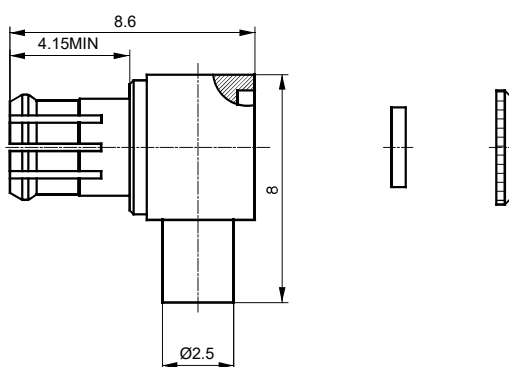
MCX-JW3Y



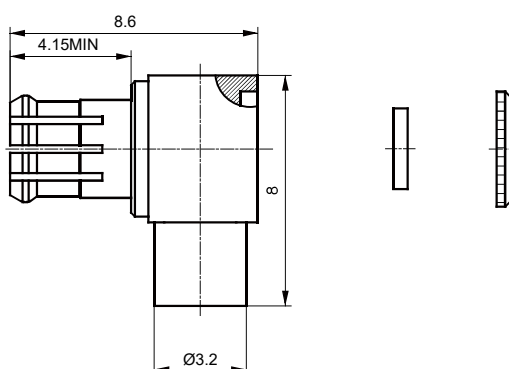
MCX-JWB1-1

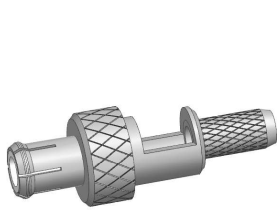


MCX-JWB1

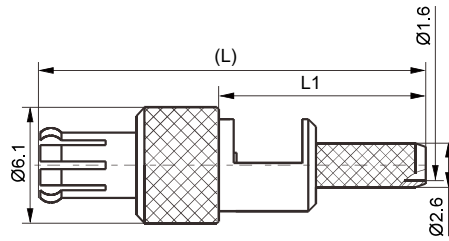


MCX-JWB2-1

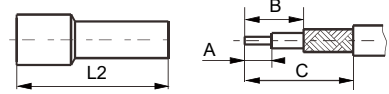




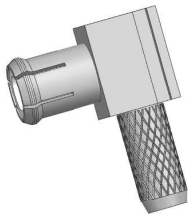
MCX-J3Y



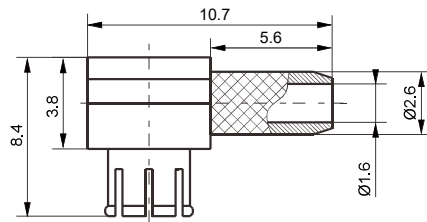
CLAMP CABLE STRIPPING SIZE



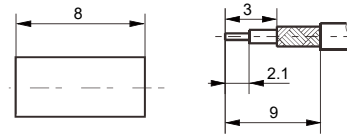
Type	L	A	B	C	D	Cable
MCX-J3Y	19.9	10.9	13.2	2.6	5	SFF-50-1.5-1 SYV-50-2-1
MCX-J3AY	18.4	9.4	16.5	2.2	4	RG316DT



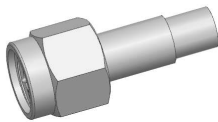
MCX-JW3AY-1



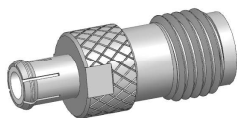
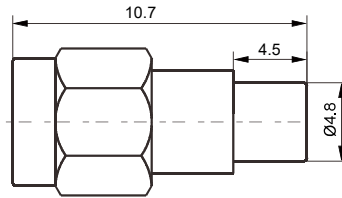
CLAMP CABLE STRIPPING SIZE



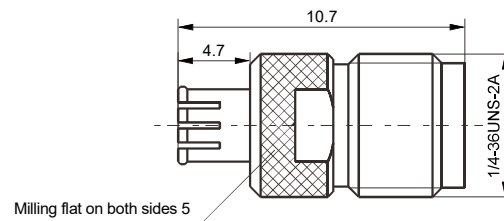
Type	Cable
MCX-JW3AY-1	RG316DT

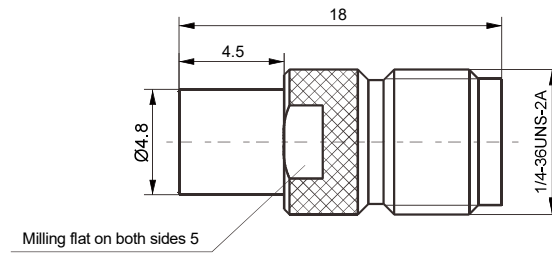
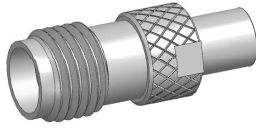


SMA/MCX-JK



SMA/MCX-KJ





SMA/MCX-KK