

MMCX series

RF Coaxial Connector

FEATURES

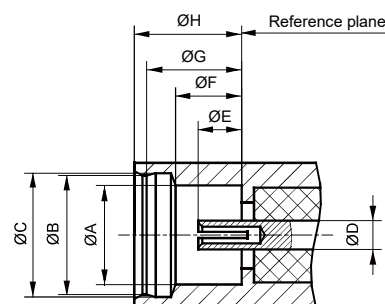
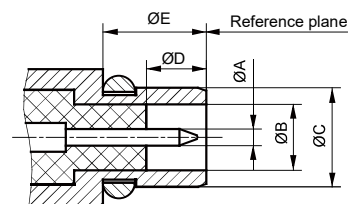
TECHNICAL PARAMETER

Mechanical endurance: 500 ops

IMPLEMENTATION CRITERIA



INTERFACE DIMENSIONS

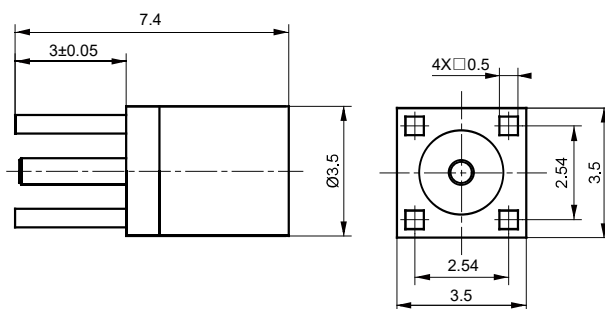
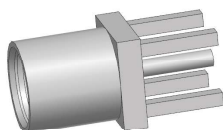
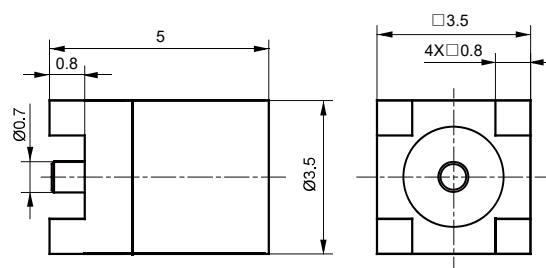
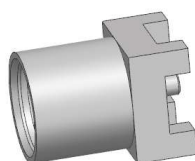
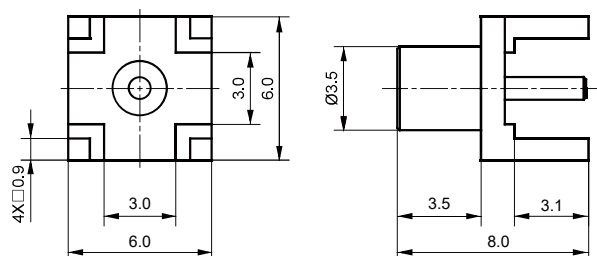
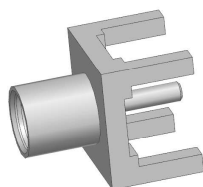
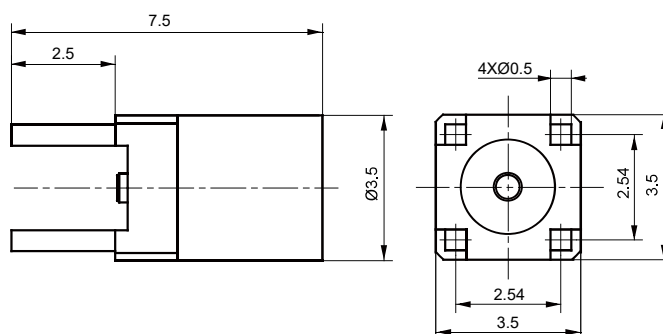
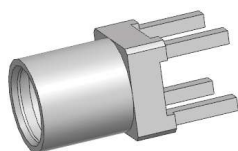


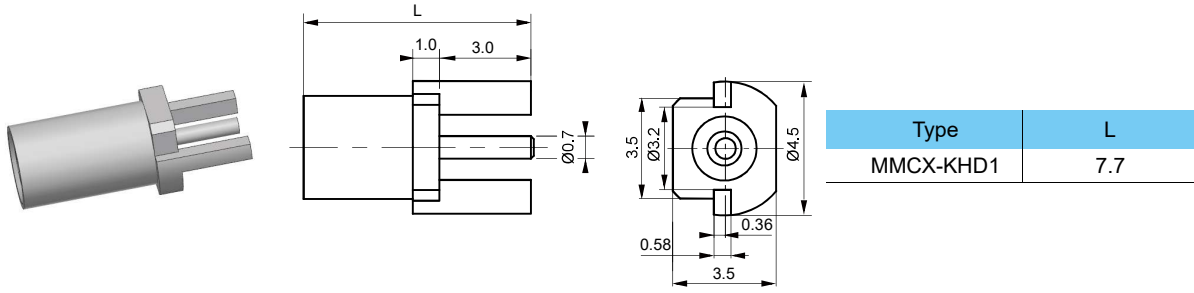
Male connector

	Min(mm)	Max(mm)
A	0.38	0.42
B	1.58	1.62
C	/	2.40
D	1.45	/
E	2.70	/

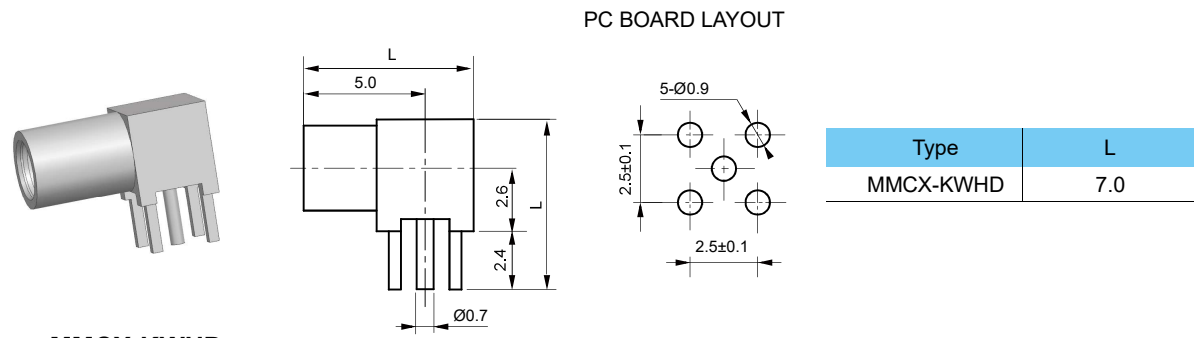
Female connector

	Min(mm)	Max(mm)
A	2.41	/
B	2.88	2.91
C	3.00	3.04
D	0.70 Nominal value	
E	0.9	1.2
F	1.57	1.63
G	2.30	2.34
H	/	2.60

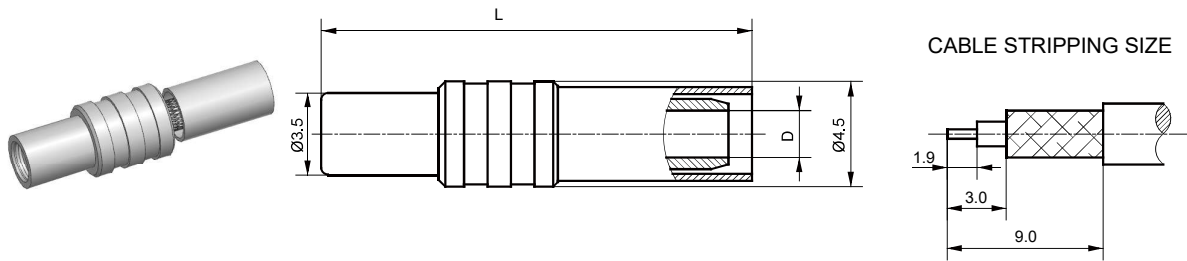
**MMCX-KHE-1****MMCX-KHE-2****MMCX-KHE****MMCX-KHT**



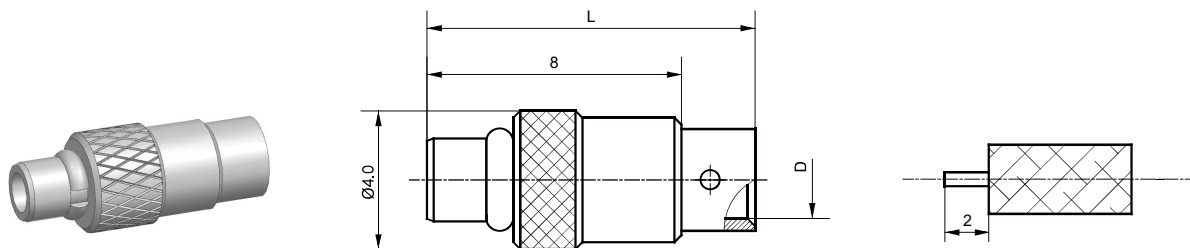
MMCX-KHD



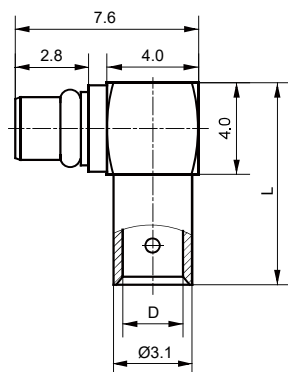
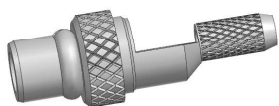
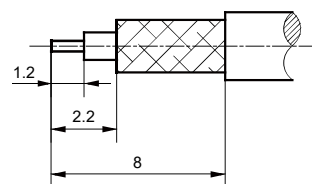
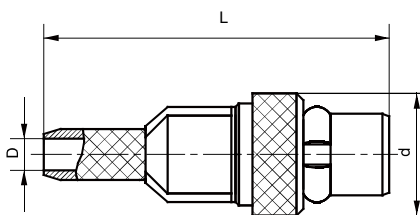
MMCX-KWHD



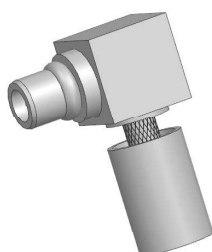
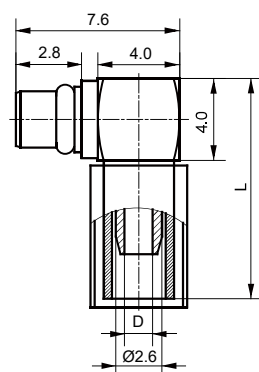
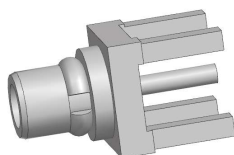
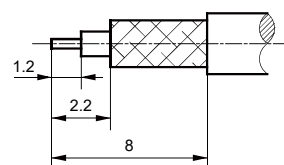
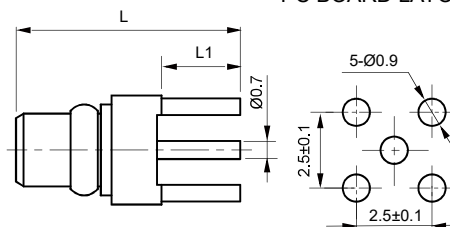
MMCX-K3Y



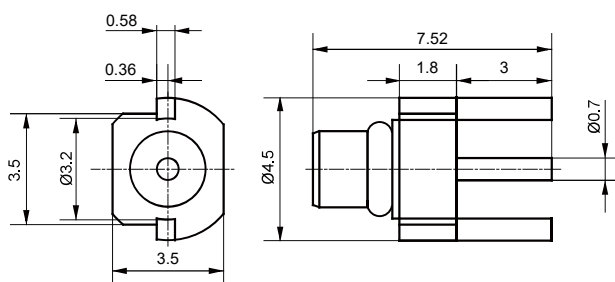
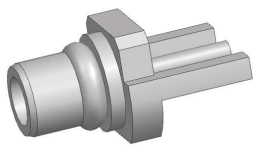
MMCX-JB2

**MMCX-JWB2-2****CABLE STRIPPING SIZE****MMCX-J2Y**

Type	L	d	D
MMCX-J2Y	11.8	Ø3.5	Ø1
MMCX-J3Y	17.6	Ø6	Ø1.6

**MMCX-JW2Y****CABLE STRIPPING SIZE****MMCX-JHD****PC BOARD LAYOUT**

Type	L	L1
MMCX-JHD	7.7	2.9
MMCX-JHD1	8.7	3.9



MMCX-JHD2

