

7/16 series

RF Coaxial Connector

FEATURES

- Larger threaded coaxial connectors
- Reliable connection, low PIM, low loss, and superior electrical performance
- Applied to communication antenna feed systems and microwave transmission

TECHNICAL PARAMETER

Temperature: - 65~+125°C

Impedance: 50Ω

Frequency: DC~7.5GHz

VSWR: ≤1.15(DC~4GHz)

Insulation resistance: ≥10000MΩ

Dielectric strength: 3500V(rms)

Operating Voltage: 1800V(rms)

Contact resistance: Mechanical endurance: ≤0.4mΩ;

Outer contact: ≤1.5mΩ

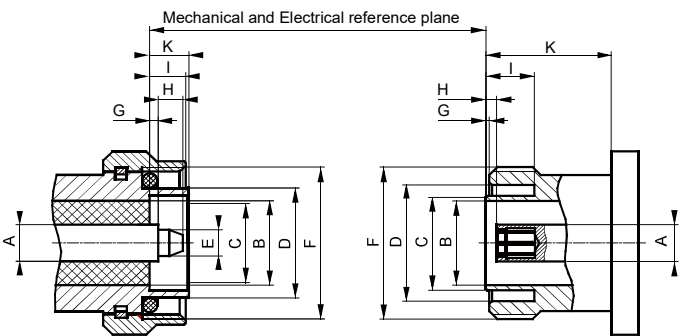
Mechanical endurance: 500 ops

IMPLEMENTATION CRITERIA

IEC 61169-1 GB/T 11313. 1



INTERFACE DIMENSIONS

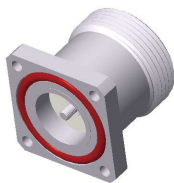


Male connector

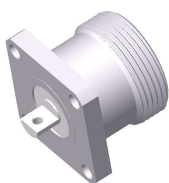
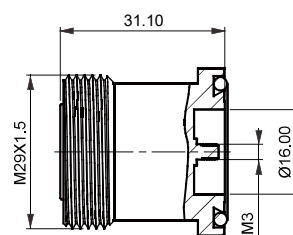
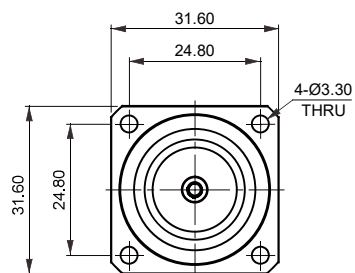
	Min(mm)	Max(mm)
A	7.00 Nominal value	
B	Ø15.85	Ø16.25
C	Ø18.03	Ø18.21
D	Ø20.60	Ø21.40
E	Ø4.96	Ø5.04
F	M29X1.5	
G	1.47	1.77
H	/	4.50
I	7.00	9.00
K	7.00	8.00

Female connector

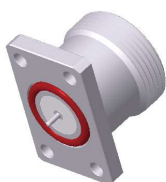
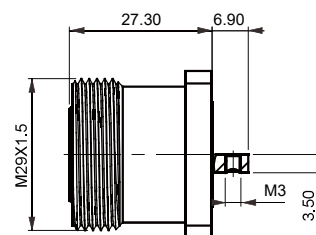
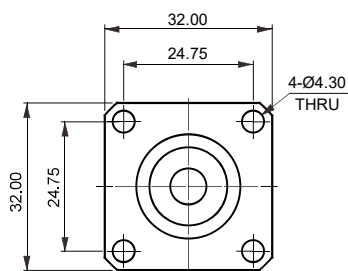
	Min(mm)	Max(mm)
A	7.00 Nominal value	
B	Ø15.85	Ø16.25
C	Ø17.84	Ø18.02
D	Ø22.10	Ø22.90
E	/	/
F	M29X1.5	
G	0.5	0.7
H	1.77	2.07
I	8.10	/
K	10.00	/



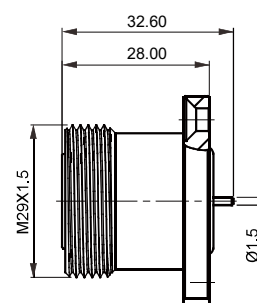
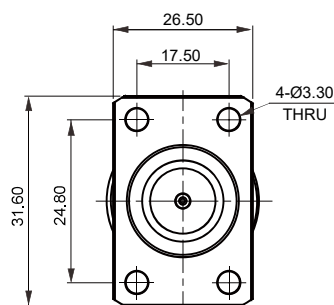
7/16-KFD-3



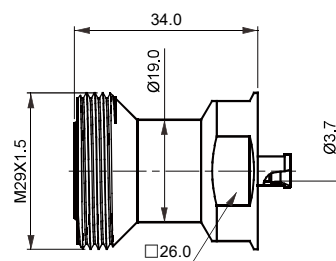
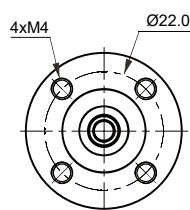
7/16-KFD-1

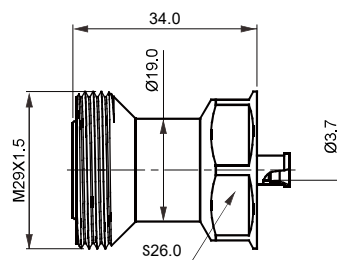
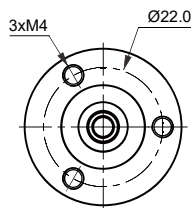
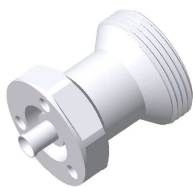


7/16-KFD-13

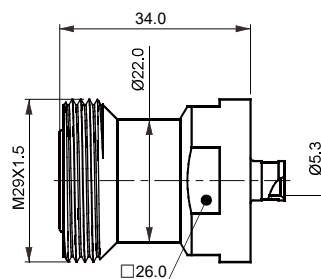
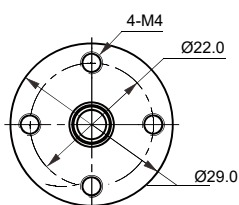


7/16-KFB3-13

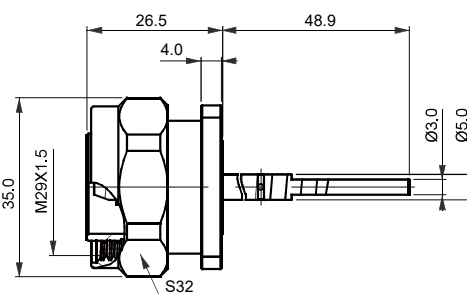
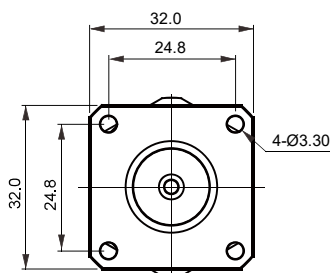




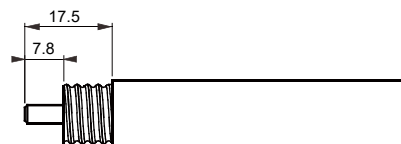
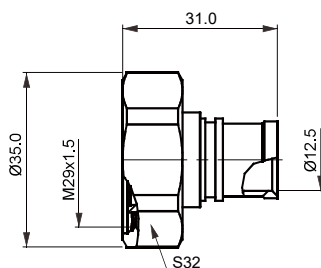
7/16-KFB3-14



7/16-KFB3-3



7/16-JFD



7/16-J533

