

# SMA series

## RF Coaxial Connector

### FEATURES

- Small size and wide frequency band
- Excellent mechanical and electrical performance, high reliability
- Suitable for fields such as microwave communication, aerospace, navigation and microwave measurement equipment

### TECHNICAL PARAMETER

Temperature: - 65~+165°C

Impedance: 50Ω

Frequency: 0~12.4GHz bx cable

0~18GHz semi rigid and semi flexible cable

VSWR:  $\leq 1.15 + 0.02F$  bx cable

$\leq 1.10 + 0.02F$  semi rigid and semi flexible cable

Insulation resistance:  $\geq 5000M\Omega$

Dielectric strength: 1000V(rms)

Operating Voltage: 330V (rms)

Contact resistance: Center contact:  $< 3m\Omega$ ;

Outer contact:  $< 2m\Omega$

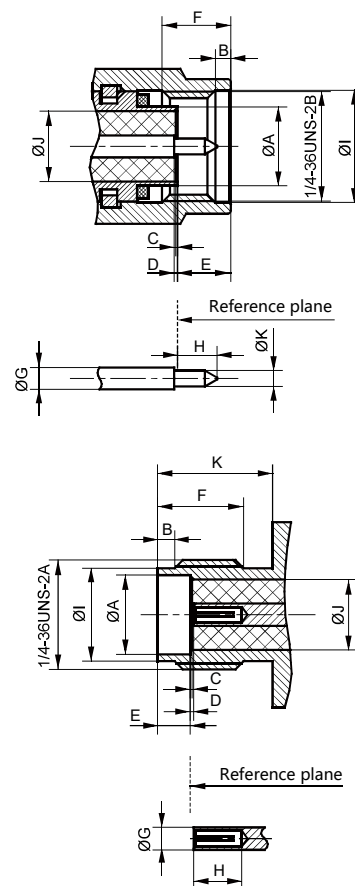
Mechanical endurance: 500 OPS

### IMPLEMENTATION CRITERIA

IEC 61169-15 GB/T 11313.15



### INTERFACE DIMENSIONS

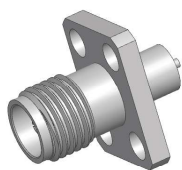
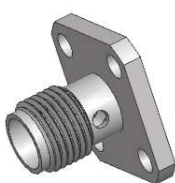
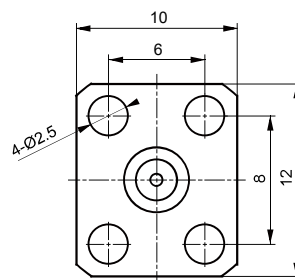
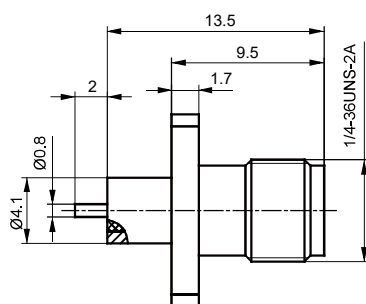
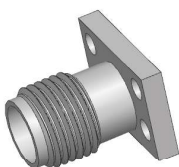
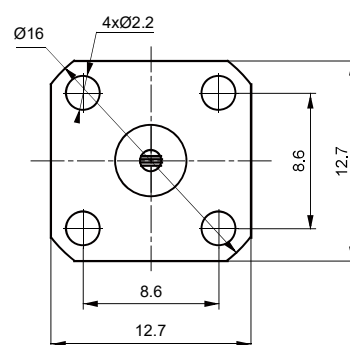
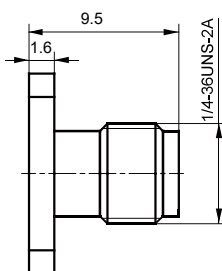
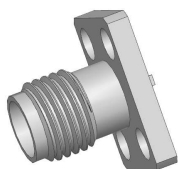
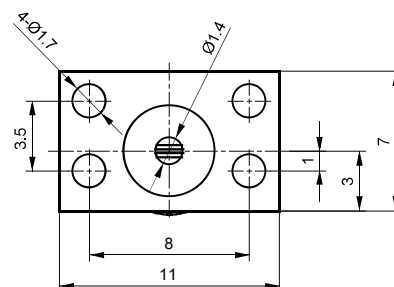
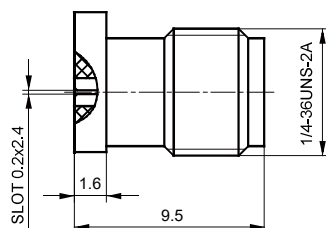
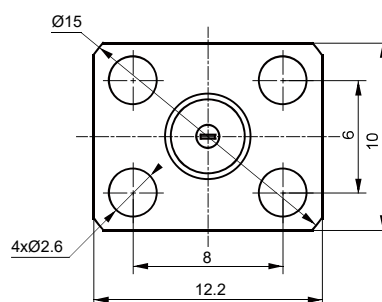
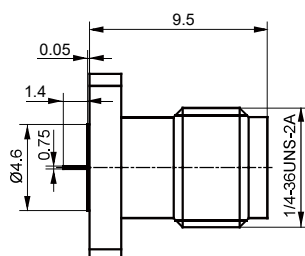


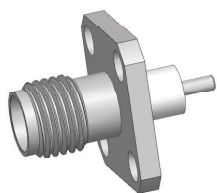
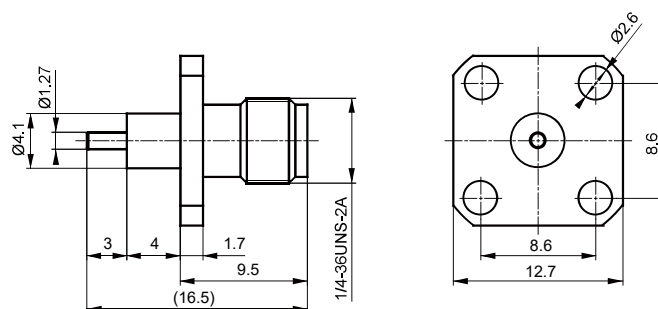
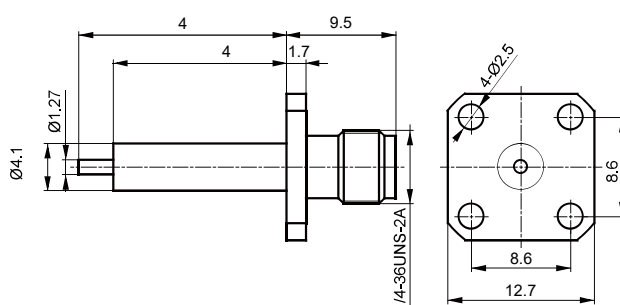
### Male Connector

	Min(mm)	Max(mm)
A	/	4.59
B	0.38	1.14
C	-0.18	+0.05
D	0.00	/
E	/	3.43
F	2.54	/
G	Ø1.27 Nominal value	
H	/	2.54
I	6.35	/
J	/	4.13
K	0.902	0.935

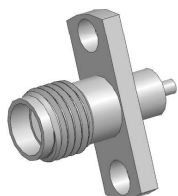
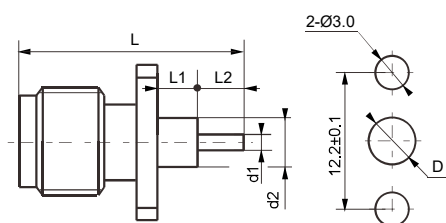
### Female Connector

	Min(mm)	Max(mm)
A	4.60	4.67
B	0.38	1.14
C	-0.05	0.18
D	0.00	0.41
E	1.88	1.98
F	4.32	/
G	Ø1.27 Nominal value	
H	2.92	/
I	5.28	5.49
J	/	4.178
K	5.54	/

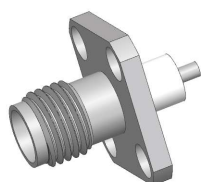
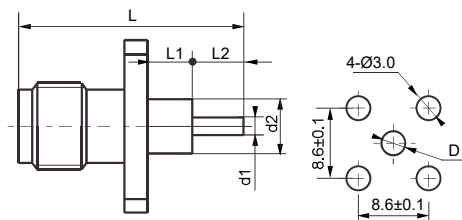
**SMA-KFD-6****SMA-KFD-13****SMA-KFD-17****SMA-KFDG-19**

**SMA-KFD4-3****SMA-KFDG-7**

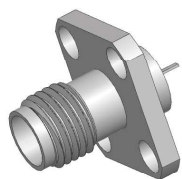
Type	Cable	Notes
SMA-KFDG-7	/	stainless steel

**SMA-KFD-50****PC BOARD LAYOUT**

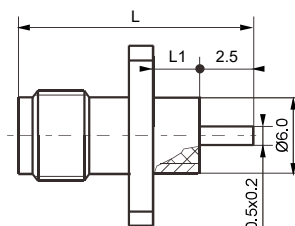
Type	L	L1	L2	d1	d2	D
SMA-KFD-50	27.6	15	3	$\varnothing 1.3$	$\varnothing 4.1$	$\varnothing 4.2$
SMA-KFD-51	14.8	3.2	2	$\varnothing 1.3$	$\varnothing 4.1$	$\varnothing 4.2$

**SMA-KFD-52****PC BOARD LAYOUT**

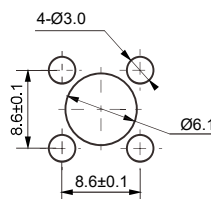
Type	L	L1	L2	d1	d2	D
SMA-KFD-52	15.6	4	2	$\varnothing 1.3$	$\varnothing 4.1$	$\varnothing 4.2$
SMA-KFD-53	20.6	9	2	$\varnothing 1.3$	$\varnothing 4.1$	$\varnothing 4.2$



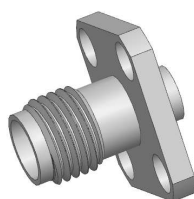
SMA-KFD-55



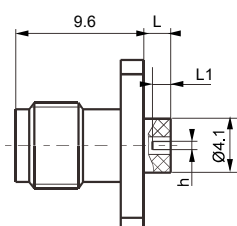
PC BOARD LAYOUT



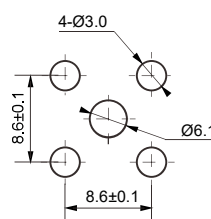
Type	L	L1
SMA-KFD-55	14.5	2.4
SMA-KFD-56	15.3	3.2
SMA-KFD-57	16.9	4.8
SMA-KFD-58	16.1	4



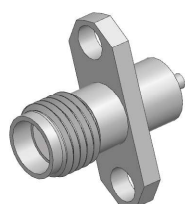
SMA-KFD-61



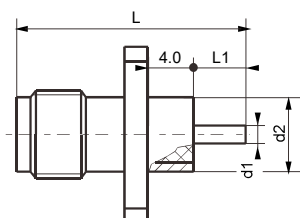
PC BOARD LAYOUT



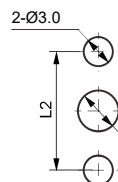
Type	L	L1	h
SMA-KFD-61	2.0	2.0	0.4
SMA-KFD-62	3.0	2.5	0.2



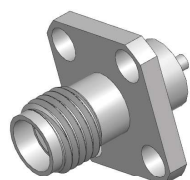
SMA-KFD-64



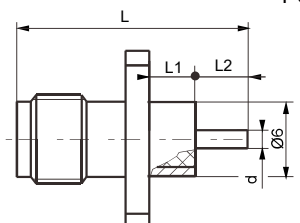
PC BOARD LAYOUT



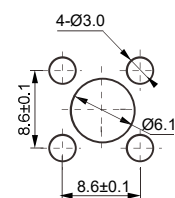
Type	L	L1	L2	d1	d2	D
SMA-KFD-64	15.6	4	12.2±0.1	Ø1.3	Ø6.0	Ø6.1
SMA-KFDG-64	15.6	9	12.2±0.1	Ø1.3	Ø6.0	Ø6.1



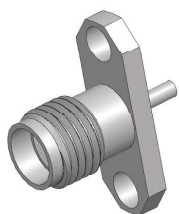
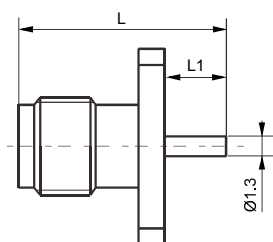
SMA-KFD-65



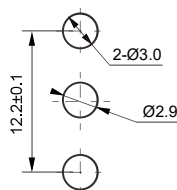
PC BOARD LAYOUT



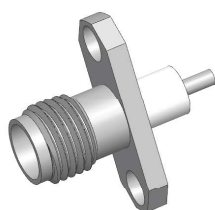
Type	L	L1	L2	d
SMA-KFD-65	15.6	4.0	2.0	Ø1.3
SMA-KFD-66	15.8	3.2	3.0	Ø1.3

**SMA-KFD-67**

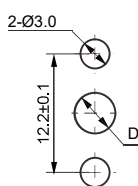
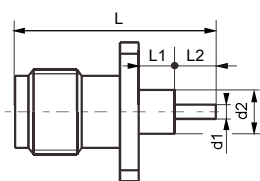
PC BOARD LAYOUT



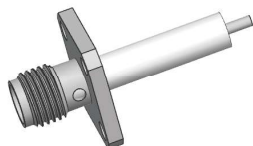
Type	L	L1
SMA-KFD-67	13.6	4.0
SMA-KFD-68	12.1	2.5

**SMA-KFD-69**

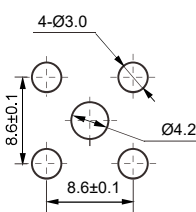
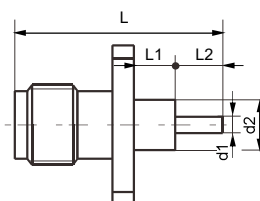
PC BOARD LAYOUT



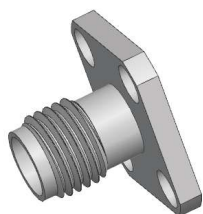
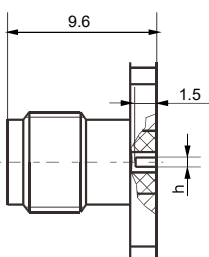
Type	L	L1	L2	d1	d2	D
SMA-KFD-69	15.6	2.0	4.0	Ø1.3	Ø4.1	Ø4.2
SMA-KFD-70	16.6	4.0	3.0	Ø1.3	Ø4.1	Ø4.2

**SMA-KFDG-7**

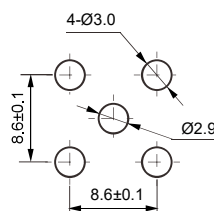
PC BOARD LAYOUT



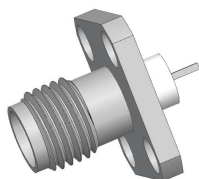
Type	L	L1	L2	d1	d2
SMA-KFDG-7	27.6	15.0	3.0	Ø1.3	Ø4.1
SMA-KFD-71	24.2	4.0	0.6	Ø0.4	Ø4.1
SMA-KFD-72	21.6	4.0	8.0	Ø1.3	Ø4.2

**SMA-KFD-73**

PC BOARD LAYOUT

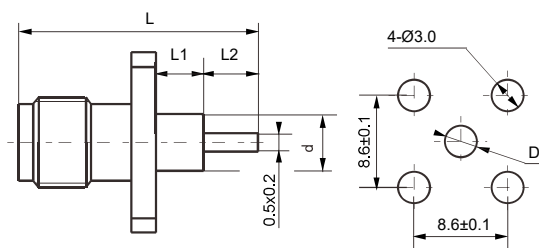


Type	h
SMA-KFD-73	0.2
SMA-KFD-74	0.4

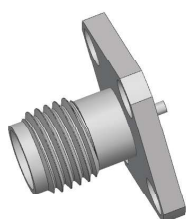


SMA-KFD-80

## PC BOARD LAYOUT

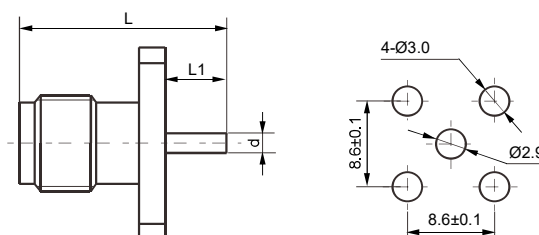


Type	L	L1	D	d
SMA-KFD-80	14.5	2.4	Ø4.2	Ø4.1
SMA-KFD-81	15.3	3.2	Ø2.2	Ø2.1
SMA-KFD-82	19.1	7.0	Ø4.2	Ø4.1

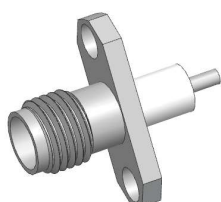


SMA-KFD-83

## PC BOARD LAYOUT

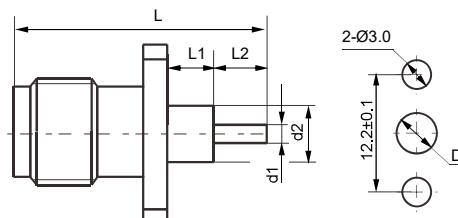


Type	L	L1	d
SMA-KFD-83	11.2	1.6	Ø0.9
SMA-KFD-84	10.8	1.2	Ø0.8
SMA-KFD-85	10.3	0.9	Ø0.6

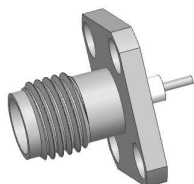


SMA-KFD-90

## PC BOARD LAYOUT

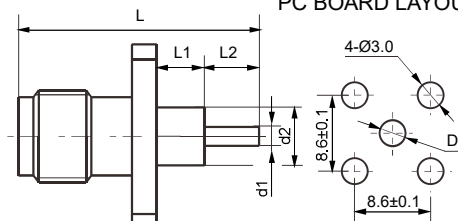


Type	L	L1	L2	d1	d2	D
SMA-KFD-90	17.6	5.0	3.0	Ø0.8	Ø4.1	Ø4.2
SMA-KFD-91	27.5	15.0	2.9	Ø1.3	Ø4.1	Ø4.2
SMA-KFD-92	15.6	2.0	4.0	Ø1.3	Ø4.1	Ø4.2

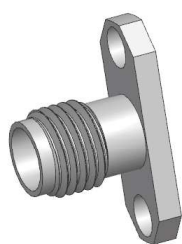


SMA-KFD-94

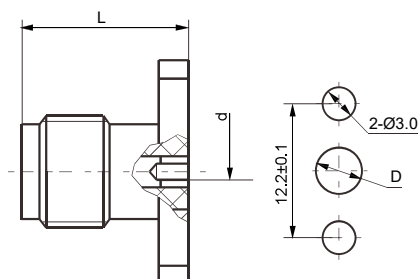
## PC BOARD LAYOUT



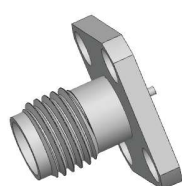
Type	L	L1	L2	d1	d2	D
SMA-KFD-94	15.3	3.2	2.5	Ø0.7	Ø2.1	Ø2.2
SMA-KFD-95	14.5	2.4	2.5	Ø1.3	Ø4.1	Ø4.2
SMA-KFD-96	27.6	13	5.0	Ø1.3	Ø4.1	Ø4.2

**SMA-KFD-97**

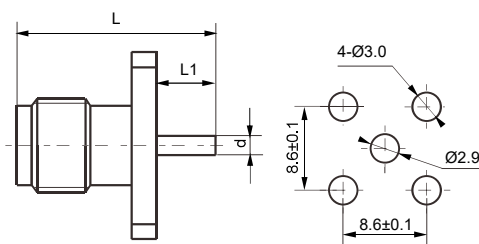
## PC BOARD LAYOUT



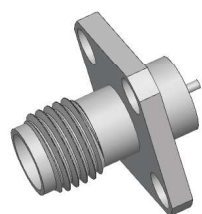
Type	h	d	D	Pin
SMA-KFD-97	12.2±0.1	Ø0.6	*	Ø0.47~Ø0.5
SMA-KFDG-98	12.2±0.1	Ø0.4	*	Ø0.35~Ø0.38
SMA-KFDG-99	12.2±0.1	Ø0.6	*	Ø0.47~Ø0.5

**SMA-KFD-100**

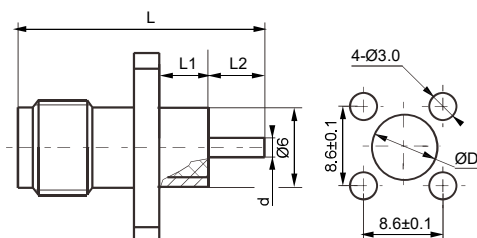
## PC BOARD LAYOUT



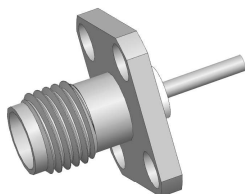
Type	L	L1	d
SMA-KFD-100	11.1	1.5	Ø0.7
SMA-KFD-101	14.1	1.5	Ø0.5

**SMA-KFD-104**

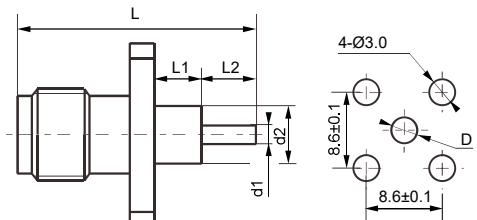
## PC BOARD LAYOUT



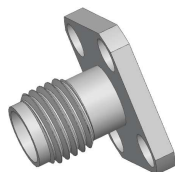
Type	L	L1	L2	d	D
SMA-KFD-104	14.1	3.0	1.5	Ø0.7	6.1
SMA-KFD-105	15.1	4.0	1.5	Ø0.8	6.1
SMA-KFDG-142	14.1	3.0	1.5	Ø0.7	6.2

**SMA-KFD-107**

## PC BOARD LAYOUT

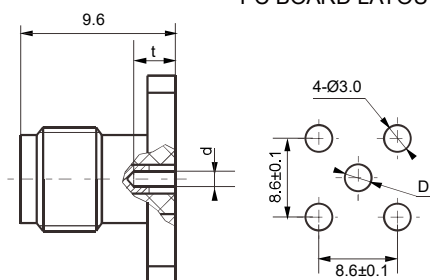


Type	L	L1	L2	d1	d2	D
SMA-KFD-107	24.3	1.6	13.1	Ø1.3	Ø4.1	Ø4.2
SMA-KFD-108	27.6	15	3.0	Ø1.3	Ø4.1	Ø4.2
SMA-KFD-109	19.1	7.5	2.0	Ø1.4	Ø4.1	Ø4.2

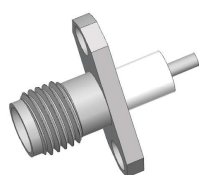


SMA-KFD-114

## PC BOARD LAYOUT

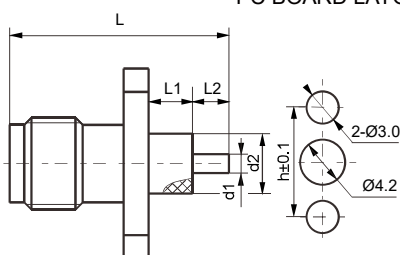


Type	t	d	D	Pin
SMA-KFD-114	2.8	Ø0.9	*	Ø0.9 ~ Ø0.93
SMA-KFD-115	2.8	Ø0.8	*	Ø0.78 ~ Ø0.8
SMA-KFD-116	2.6	Ø0.5	*	Ø0.45 ~ Ø0.48

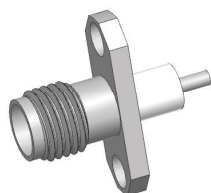


SMA-KFDG-118

## PC BOARD LAYOUT

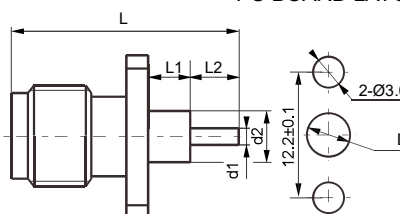


Type	L	L1	L2	d1	d2	h
SMA-KFDG-118	17.6	5.0	3.0	Ø1.8	Ø4.1	10.2
SMA-KFD-119	19.2	4.0	5.6	Ø0.7	Ø4.1	12.2
SMA-KFD-120	14.1	3.0	1.5	Ø1.3	Ø4.1	12.2

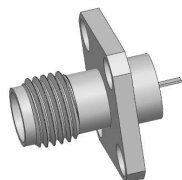


SMA-KFD-123

## PC BOARD LAYOUT

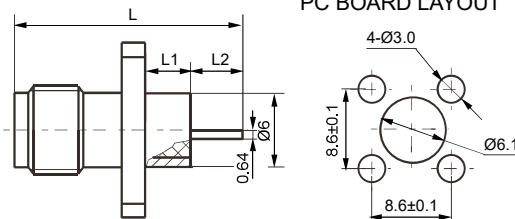


Type	L	L1	L2	d1	d2	D
SMA-KFD-123	17.0	3.0	3.0	Ø1.3	Ø4.1	Ø4.2
SMA-KFD-124	25.8	12.2	4.0	Ø1.3	Ø3.0	Ø3.1
SMA-KFD-125	14.8	3.2	2.0	Ø1.3	Ø4.1	Ø4.2
SMA-KFD-126	27.6	15.0	3.0	Ø1.3	Ø4.1	Ø4.2
SMA-KFD-127	34.6	20.0	5.0	Ø1.3	Ø4.1	Ø4.2
SMA-KFD-128	27.7	10.5	7.0	Ø0.8	Ø2.6	Ø2.7
SMA-KFD-129	14.1	2.0	2.5	Ø1.3	Ø4.1	Ø4.2
SMA-KFD-130	15.6	3.0	3.0	Ø1.0	Ø4.1	Ø4.2



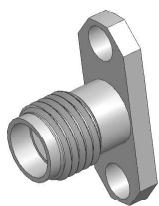
SMA-KFD-132

## PC BOARD LAYOUT

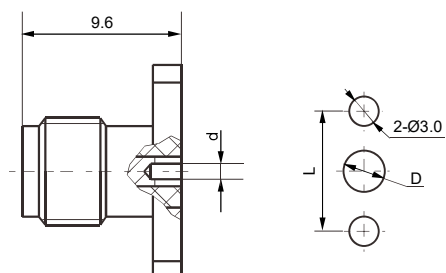


Type	L	L1	L2
SMA-KFD-132	15.1	3.0	2.5
SMA-KFD-133	15.6	4.0	2.0
SMA-KFD-134	17.1	5.0	2.5
SMA-KFD-135	16.1	4.0	2.5
SMA-KFD-136	17.6	5.0	3.0



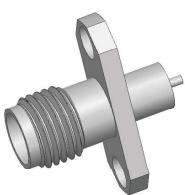


SMA-KFD-140

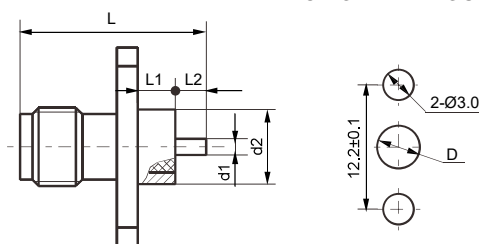


PC BOARD LAYOUT

Type	L	d	D
SMA-KFD-140	12.2±0.1	Ø0.5	*
SMA-KFD-141	12.2±0.1	Ø0.5	*

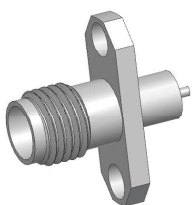


SMA-KFDG-148

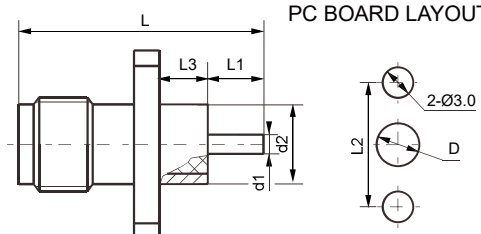


PC BOARD LAYOUT

Type	L	L1	L2	d1	d2	D
SMA-KFDG-148	15.1	4.0	1.5	Ø0.8	Ø4.0	Ø4.1
SMA-KFD-149	14.6	2.5	2.5	Ø1.3	Ø6.0	Ø6.1
SMA-KFD-150	14.4	2.4	2.4	Ø0.5	Ø5.2	Ø5.3
SMA-KFD-151	14.0	2.4	2.0	Ø0.5	Ø5.2	Ø5.3
SMA-KFD-152	15.6	4.0	2.0	Ø0.8	Ø4.1	Ø4.2
SMA-KFD-153	15.6	4.0	2.0	Ø0.8	Ø4.1	Ø4.2
SMA-KFDG-154	16.9	4.0	3.3	Ø1.3	Ø6.0	Ø6.1

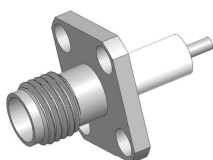


SMA-KFD-148

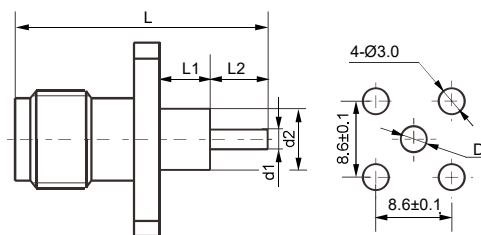


PC BOARD LAYOUT

Type	L	L1	L2	L3	d1	d2	D
SMA-KFDG-148	15.1	1.5	12.2±0.1	4.0	Ø0.8	Ø4.1	Ø4.2
SMA-KFD-155	15.1	1.5	10.2±0.1	4.0	Ø0.8	Ø4.0	Ø4.1
SMA-KFD-156	14.4	0.8	12.2±0.1	4.0	Ø0.6	Ø4.0	Ø4.1
SMA-KFD-157	17.6	3.0	10.2±0.1	5.0	Ø1.0	Ø4.5	Ø4.6

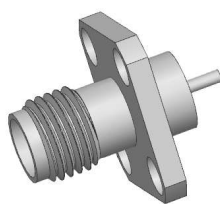


SMA-KFD-158

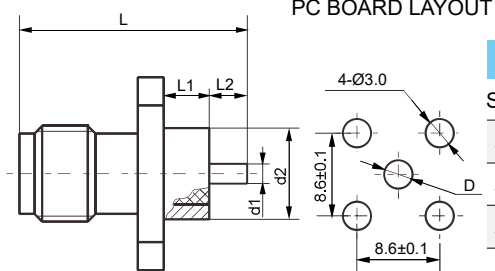


PC BOARD LAYOUT

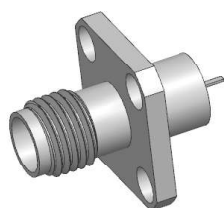
Type	L	L1	L2	d1	d2	D
SMA-KFDG-158	20.6	8.0	3.0	Ø1.3	Ø4.1	Ø4.2
SMA-KFD-159	18.8	3.0	4.2	Ø1.3	Ø4.1	Ø4.2
SMA-KFD-160	39.6	25.0	5.0	Ø1.3	Ø4.1	Ø4.2
SMA-KFD-161	17.6	25.0	12.0	Ø1.3	Ø4.1	Ø4.2



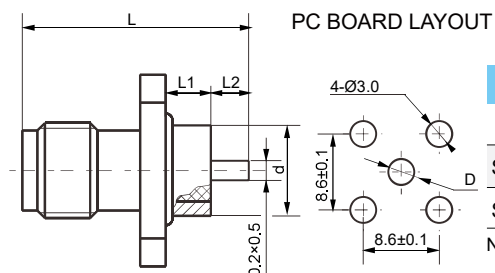
SMA-KFD-162



Type	L	L1	L2	d1	d2	D
SMA-KFDG162	15.6	3.0	3.0	Ø1.0	Ø6.0	Ø6.1
SMA-KFD163	18.6	4.0	5.0	Ø1.3	Ø6.0	Ø6.1
SMA-KFD164	15.6	2.4	2.0	Ø0.8	Ø4.8	Ø4.9
SMA-KFD165	14.4	4.0	2.4	Ø0.5	Ø5.2	Ø5.3
SMA-KFD166	14.4	4.0	0.8	Ø0.6	Ø4.0	Ø4.1

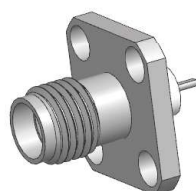


SMA-KFD-167

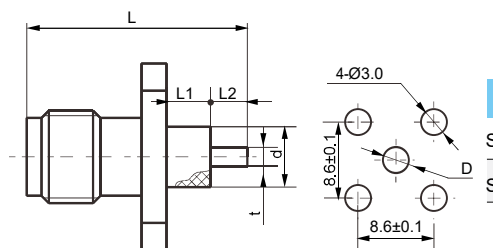


Type	L	L1	L2	d	D
SMA-KFD-167	17.1	5.0	2.5	Ø6.0	Ø6.1
SMA-KFDG-167	17.1	5.0	2.5	Ø6.0	Ø6.1
SMA-KFDG-168	21.2	5.0	6.6	Ø6.0	Ø6.1

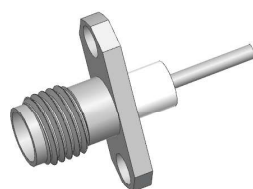
Notes: The microstrip size of SMA-KFD206G Ø 1.3



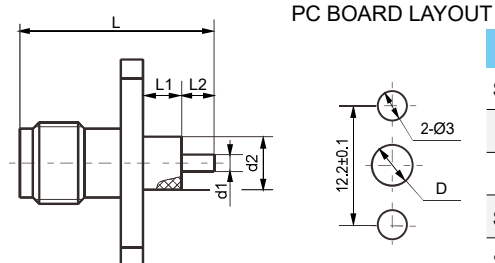
SMA-KFD-169



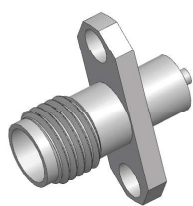
Type	L	L1	L2	t	d	D
SMA-KFD-169	15.3	3.2	2.5	Ø0.7×0.5 Semicircle	Ø2.1	Ø2.2
SMA-KFD-170	13.3	1.5	2.2	Ø1.3×0.65 Semicircle	Ø4.1	Ø4.2



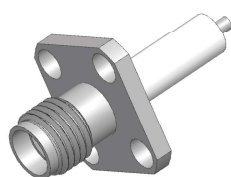
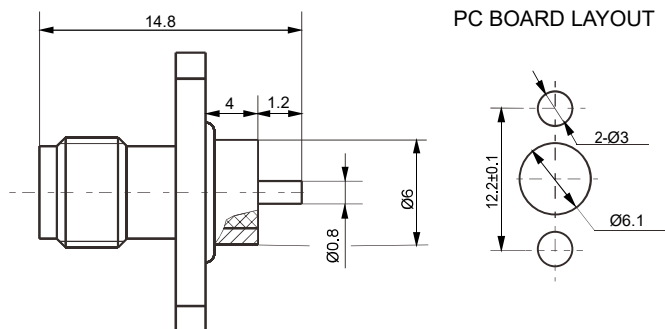
SMA-KFD-172



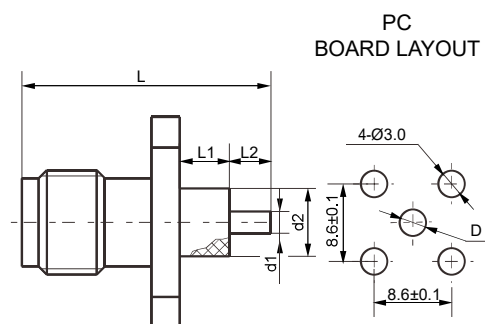
Type	L	L1	L2	d1	d2	D
SMA-KFD-172	17.6	6.0	2.0	Ø1.3	Ø4.1	Ø4.2
SMA-KFD-10	21.6	4.0	8.0	Ø1.3	Ø4.1	Ø4.2
SMA-KFD-14	15.6	4.0	2.0	Ø1.3	Ø4.1	Ø4.2
SMA-KFD-173	81.1	62.0	9.5	Ø1.3	Ø4.1	Ø4.2
SMA-KFD-174	20.6	7.0	4.0	Ø1.3	Ø3.0	Ø3.1
SMA-KFD-175	40.8	20.6	10.0	Ø1.0	Ø4.1	Ø4.2



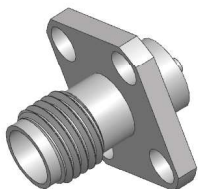
SMA-KFD-176



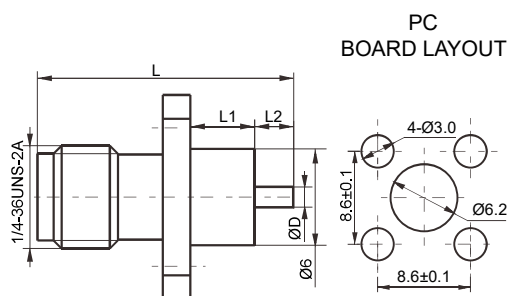
SMA-KFD-178



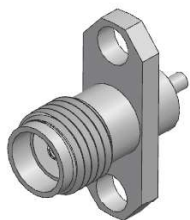
Type	L	L1	L2	d1	d2	D
SMA-KFD-178	23.6	12	2.0	Ø1.3	Ø4.1	Ø4.2
SMA-KFD-179	24.1	9.0	5.5	Ø1.3	Ø4.1	Ø4.2
SMA-KFD-180	16.6	5.0	2.0	Ø1.3	Ø4.1	Ø4.2
SMA-KFD-181	17.0	5.4	2.0	Ø1.3	Ø4.1	Ø4.2
SMA-KFD-182	27.6	4.0	14.0	Ø1.3	Ø4.1	Ø4.2
SMA-KFD-183	33.6	4.0	20.0	Ø1.3	Ø4.1	Ø4.2



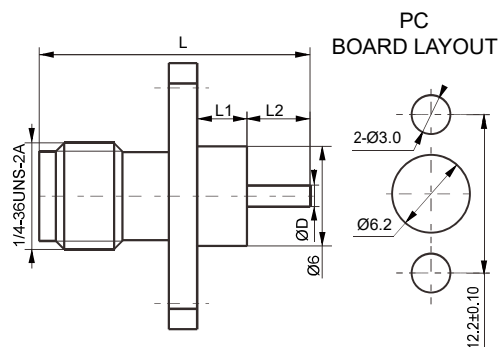
SMA-KFD-184



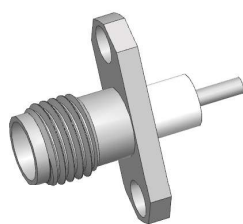
Type	L	L1	L2	D
SMA-KFD-184	14.0	3.2	1.2	1.3
SMA-KFDG-184	14.0	3.2	1.2	1.3
SMA-KFDG-185	15.1	4.0	1.5	0.8



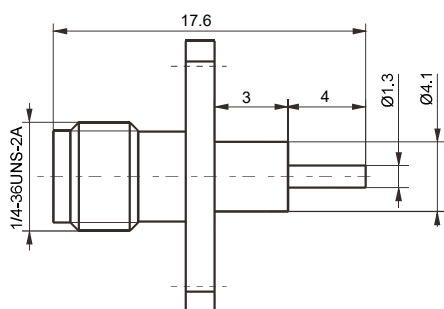
SMA-KFD-186



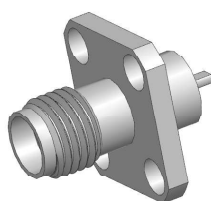
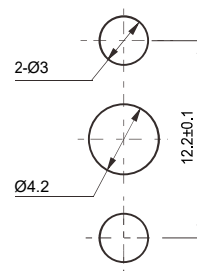
Type	L	L1	L2	D
SMA-KFD-186	15.0	2.4	3.0	1.3
SMA-KFD-187	15.8	3.2	3.0	1.3
SMA-KFD-188	17.4	4.8	3.0	1.3



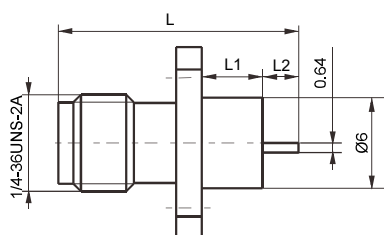
SMA-KFD-189



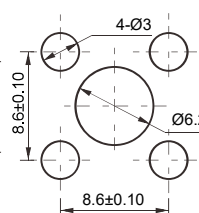
PC BOARD LAYOUT



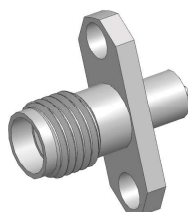
SMA-KFD-190



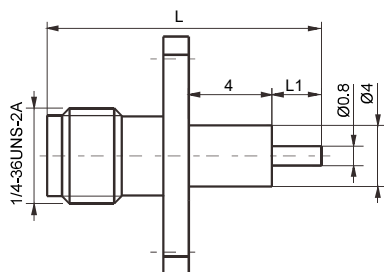
PC BOARD LAYOUT



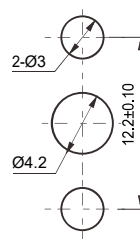
Type	L	L1	L2
SMA-KFD-190	16.0	4.0	2.4
SMA-KFD-191	15.6	4.0	2.0



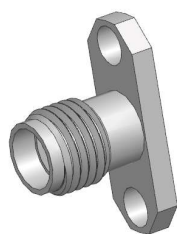
SMA-KFD-197



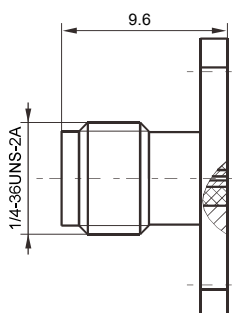
PC BOARD LAYOUT



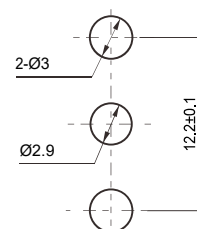
Type	L	L1
SMA-KFD-197	14.6	1.0
SMA-KFD-198	16.1	2.5



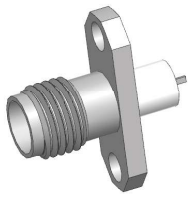
SMA-KFD-203



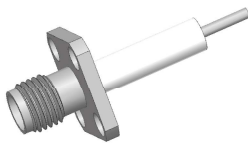
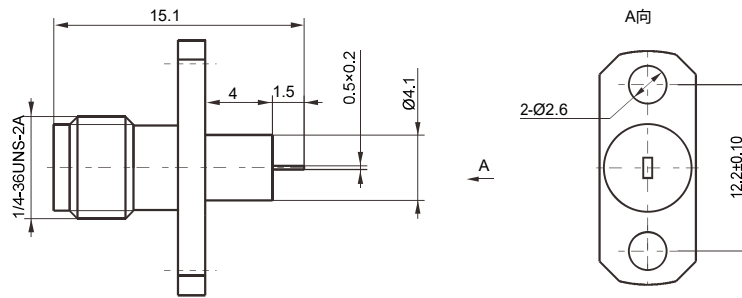
PC BOARD LAYOUT



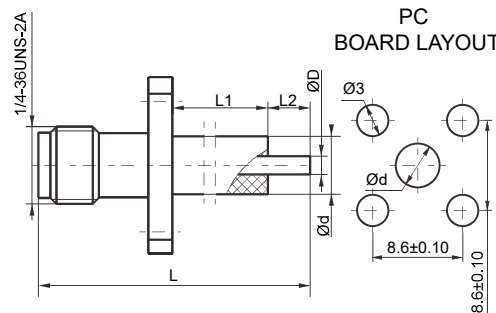
Note: The groove is parallel to the long side of the flange, with a groove width of 0.2mm



SMA-KFD-206

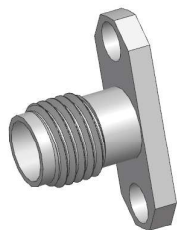


SMA-KFD-211

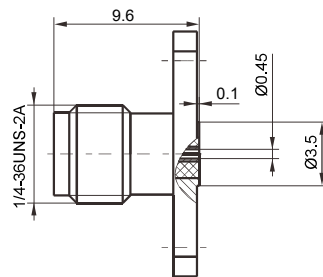


PC BOARD LAYOUT

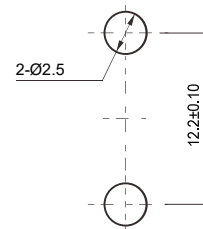
Type	L	L1	L2	D	d
SMA-KFD-211	30.2	14.4	6.2	1.3	4.1
SMA-KFD-212	55.6	34.0	12.0	1.3	4.1
SMA-KFD-213	27.6	0	18.0	1.3	2.9
SMA-KFD-214	15.8	3.0	3.0	1.0	4.1
SMA-KFD-215	19.6	9.0	1.0	1.1	3.8
SMA-KFD-216	30.0	6.5	5.5	1.3	4.1
SMA-KFD-217	24.6	12.0	3.0	1.3	4.1
SMA-KFD-218	16.2	3.8	2.8	0.8	4.1



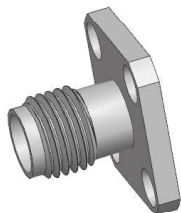
SMA-KFDG-221



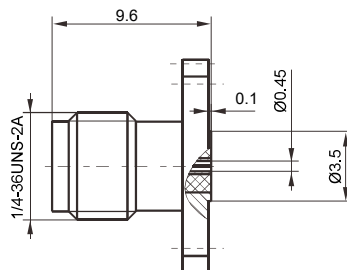
PC BOARD LAYOUT



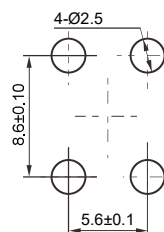
Note: The tail is equipped with a 0.35-0.38mm pin



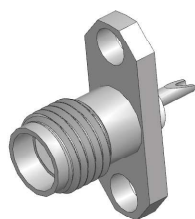
SMA-KFDG-222



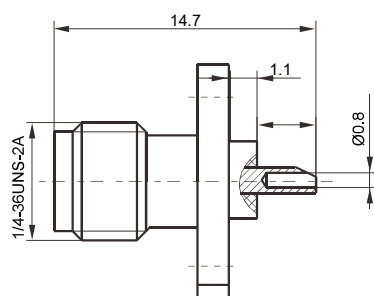
PC BOARD LAYOUT



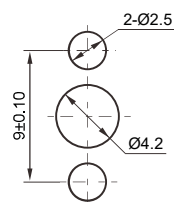
Note: The tail is equipped with a 0.35-0.38mm pin



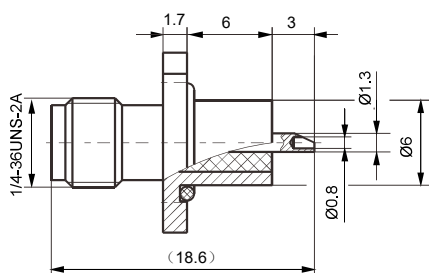
SMA-KFDG-228



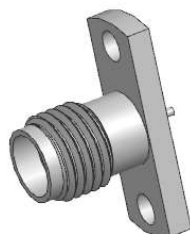
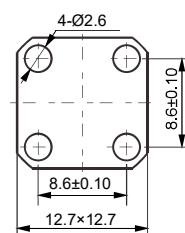
PC BOARD LAYOUT



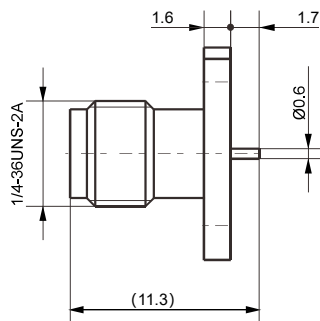
SMA-KFD-230



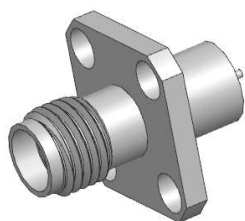
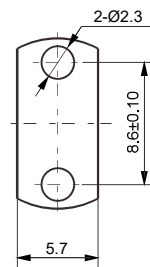
FLANGE SIZE



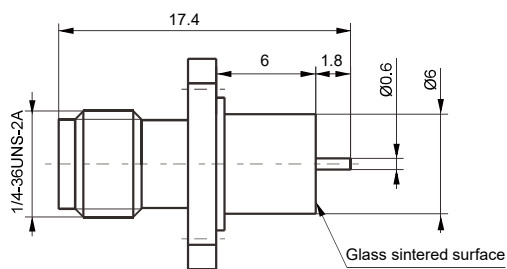
SMA-KFD-234



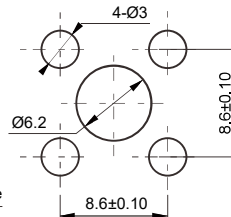
FLANGE SIZE

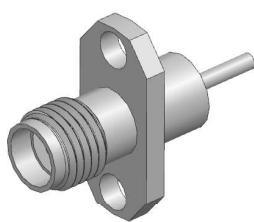


SMA-M-KFD-236

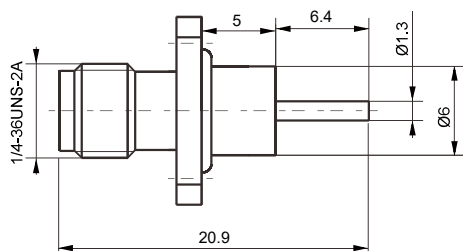


PC BOARD LAYOUT

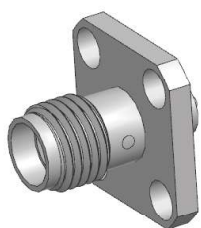
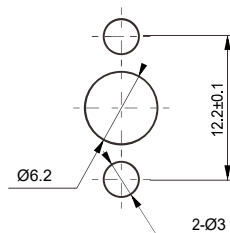




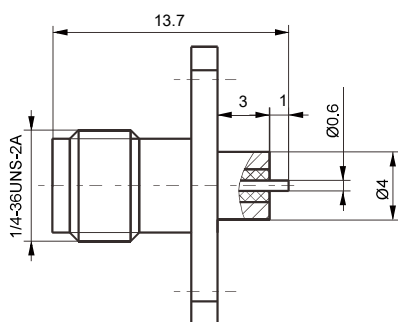
SMA-M-KFD-238



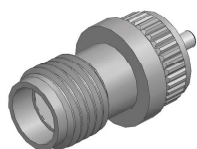
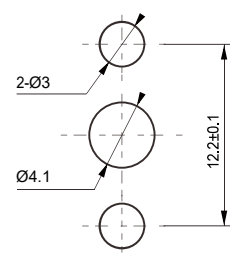
PC BOARD LAYOUT



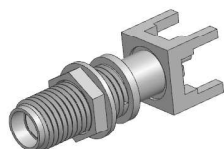
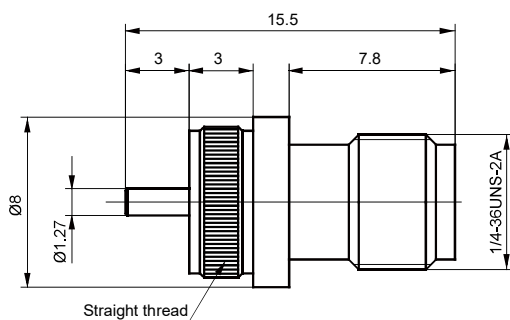
SMA-KFD-242



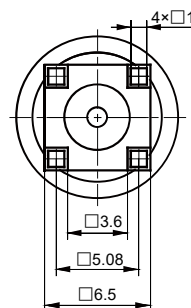
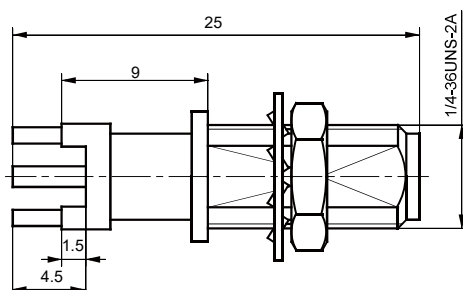
PC BOARD LAYOUT



SMA-KPD

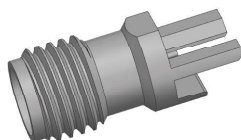
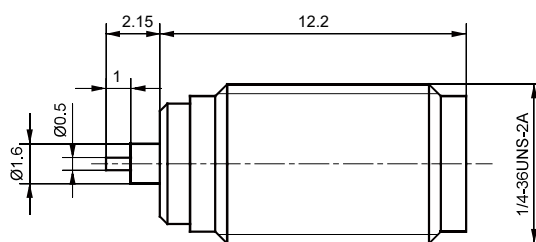


SMA-KYHE

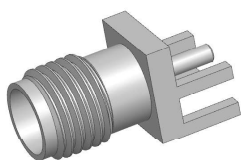
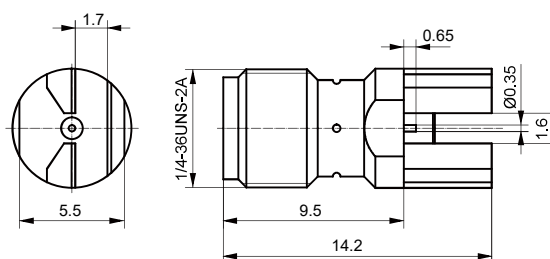




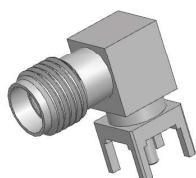
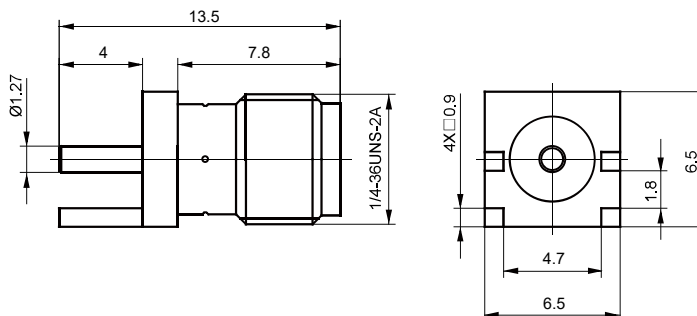
SMA-KDG



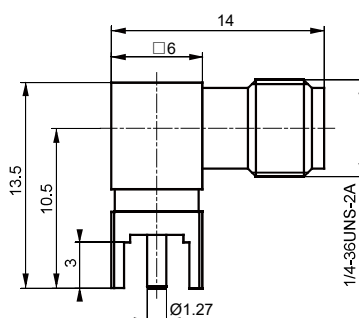
SMA-KHE-10



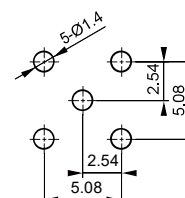
SMA-KHE-6



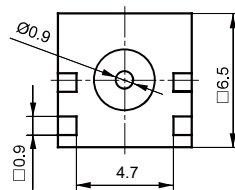
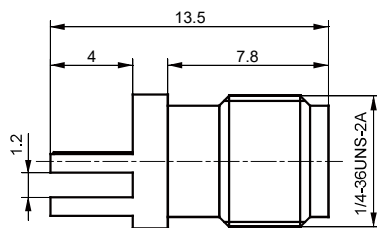
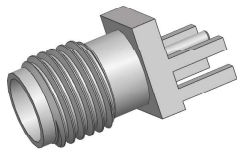
SMA-KWHE



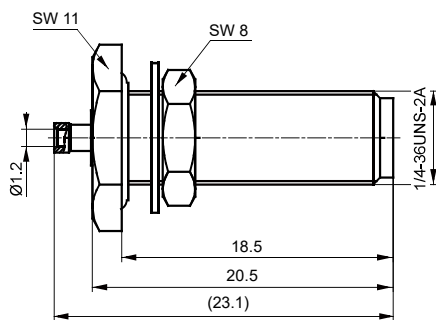
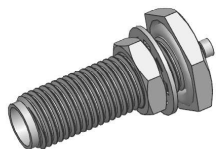
PC BOARD LAYOUT



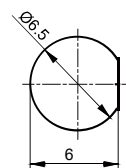




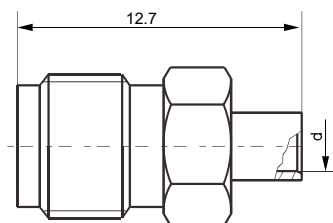
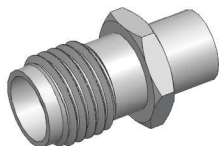
**SMA-KHE-2**



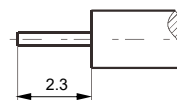
**PC BOARD LAYOUT**



**SMA-KY1.13**

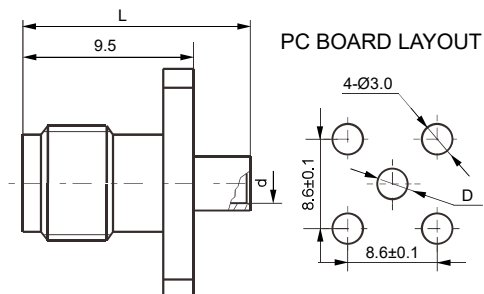
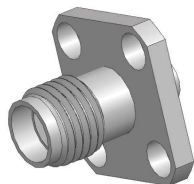


**Cable stripping size**

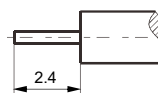


Type	d	Cable
SMA-KB2	Ø2.2	SFT-50-2-1
SMA-KB3	Ø3.6	SFT-50-3-1

**SMA-KB2**

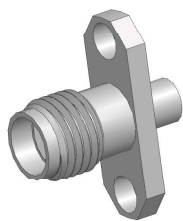
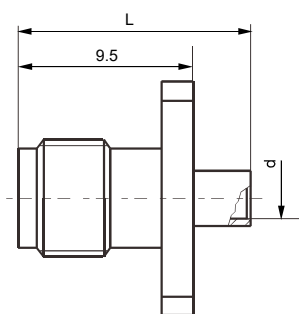


**Cable stripping size**

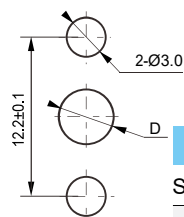


Type	d	D	L	Cable
SMA-KFB1	Ø1.2	Ø3.2	12.7	SFT-50-1
SMA-KFB2	Ø2.2	Ø3.5	12.7	SFT-50-2-1
SMA-KFB3	Ø3.6	Ø5.0	14.2	SFT-50-3-1

**SMA-KFB1**

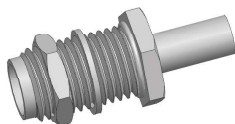
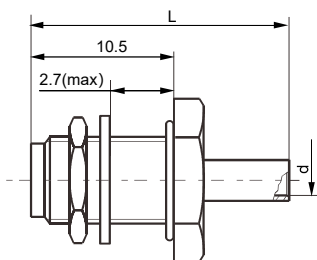
**SMA-KFB2-1**

PC BOARD LAYOUT

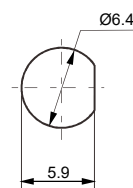


CABLE STRIPPING SIZE

Type	d	D	L	Cable
SMA-KFB2-1	Ø2.2	Ø3.5	12.7	SFT-50-2-1
SMA-KFB3-1	Ø3.6	Ø5.0	14.2	SFT-50-3-1

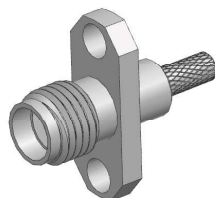
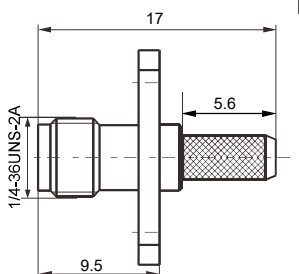
**SMA-KYB2-1**

PC BOARD LAYOUT

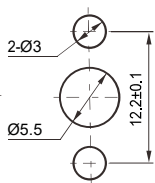


CABLE STRIPPING SIZE

Type	d	L1	Cable
SMA-KYB2-1	Ø2.2	19.0	SFT-50-2-1
SMA-KYB3	Ø3.6	19.0	SFT-50-3-1
SMA-KYB3-1	Ø3.6	15.9	SFT-50-3-1

**SMA-KF3Y-1**

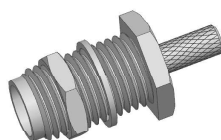
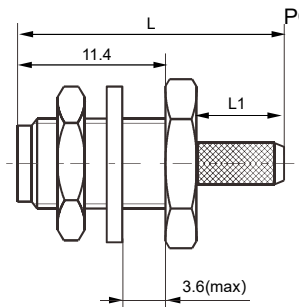
PC BOARD LAYOUT



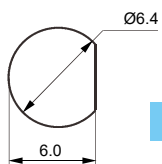
CLAMP

CABLE STRIPPING SIZE

Type	Cable
SMA-KF3Y-1	SYV-50-2-1, SFF-50-1.5-1

**SMA-KY3Y-1**

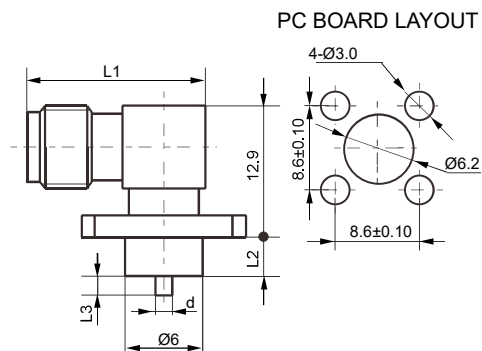
PC BOARD LAYOUT



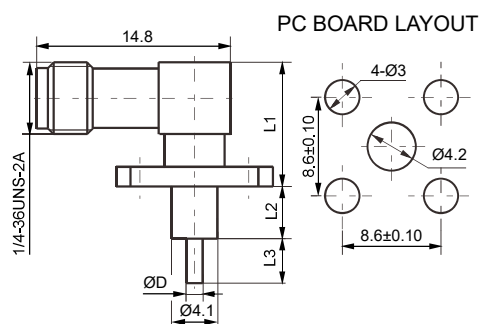
CLAMP

CABLE STRIPPING SIZE

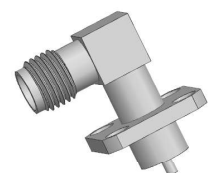
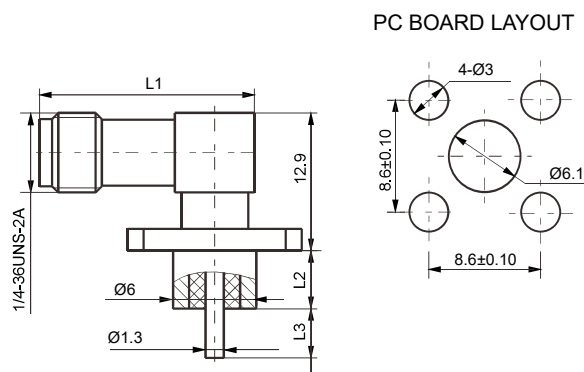
Type	L	L1	L2	A	B	C	Cable
SMA-KY3Y-1	18.8	5.6	6.5	2.5	6.7	12.3	SFF-50-1.5-1
							SYV-50-2-1
SMA-KY4Y	21.2	8.0	10.0	2.5	5.4	13.4	SFF-50-2-2
							SYV-50-2-2
SMA-KY5Y	23.2	10.0	12.0	2.5	5.4	15.4	SFF-50-3-1
							SYV-50-3

**SMA-KWFD-10**

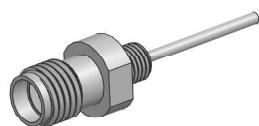
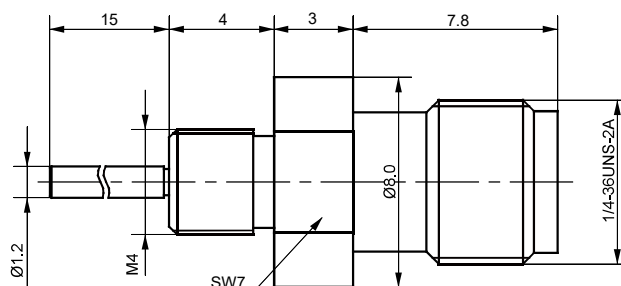
Type	L1	L2	L3	d
SMA-KWFD-10	14.8	4.0	2.0	Ø1.3
SMA-KWFD-11	14.8	2.4	5.0	Ø1.3
SMA-KWFD-12	23.3	4.0	2.0	Ø1.3

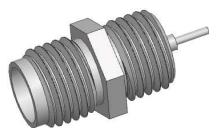
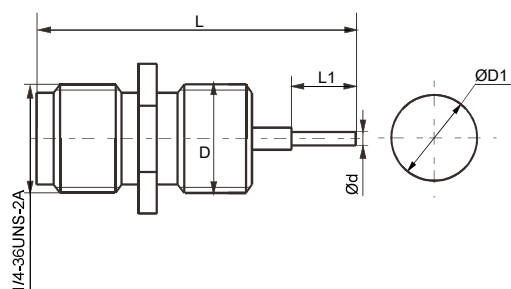
**SMA-KWFD-14**

Type	L1	L2	L3	D
SMA-KWFD-14	11.4	8.8	0.2	Ø1.3
SMA-KWFD-15	11.4	4.0	3.5	Ø1.3
SMA-KWFD-16	10.9	4.0	5.0	Ø1.3
SMA-KWFD-17	12.9	5.0	3.0	Ø1.3
SMA-KWFD-18	12.9	7.0	4.5	Ø1.3
SMA-KWFD-19	12.9	0	7.8	Ø1.3
SMA-KWFD-20	12.9	11.5	2.0	Ø0.8

**SMA-KWFD-21**

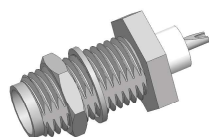
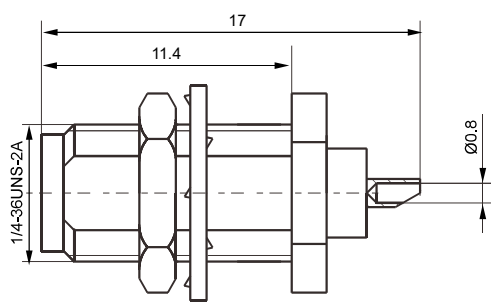
Type	L1	L2	L3
SMA-KWFD21	23.3	4	2
SMA-KWFD38	14.9	4	2
SMA-KWFD40	14.9	3	6

**SMA-KYD-1**

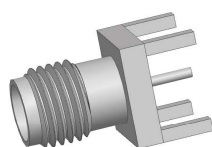
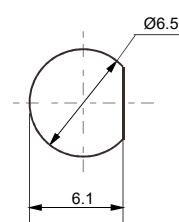
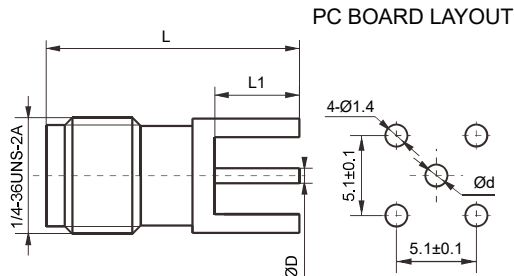
**SMA-KYD-11**

PC BOARD LAYOUT

Type	L	L1	D	d	D1
SMA-KYD-11	16.6	2.8	1/4-36UNS-2A	0.6	6.4
SMA-KYD-12	19.1	3.0	M7×0.75	0.7	7.1

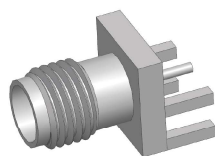
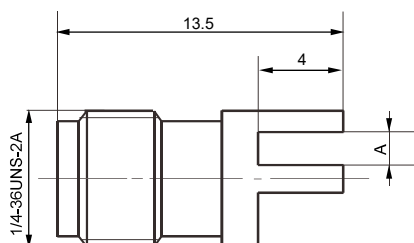
**SMA-KYD-14**

PC BOARD LAYOUT

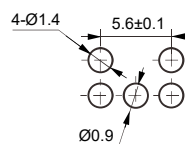
**SMA-KHD-2**

PC BOARD LAYOUT

Type	L	L1	D	d	Notes
SMA-KHD-2	13.5	4.0	0.8	0.9	
SMA-KHD-3	20.7	4.0	1.3	1.4	
SMA-KHD-4	14.5	5.0	1.3	1.4	Shell nickel plating
SMA-KHD-5	15.5	3.0	1.3	1.4	

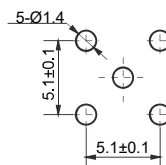
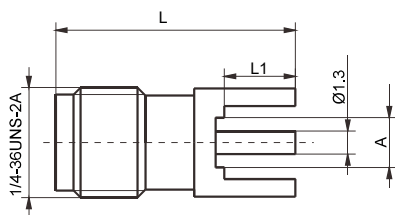
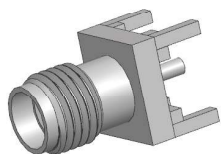
**SMA-KHD-6**

PC BOARD LAYOUT



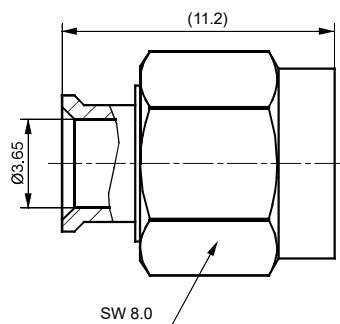
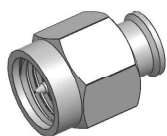
Type	A
SMA-KHD-6	2.0
SMA-KHD-7	1.8
SMA-KHD-8	2.2
SMA-KHD-9	1.1

## PC BOARD LAYOUT



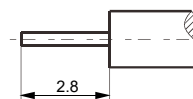
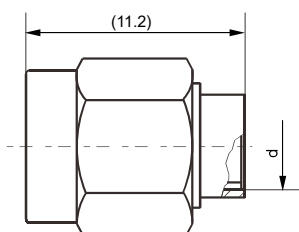
Type	L	L1	A
SMA-KHD-10	13.5	4.0	3.5
SMA-KHD-11	13.5	4.0	2.8
SMA-KHD-12	15.8	6.3	2.8

SMA-KHD-10



SMA-JB3

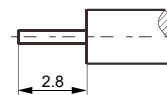
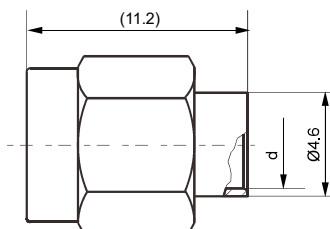
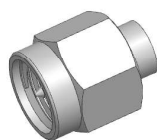
## CABLE STRIPPING SIZE



Type	d	Cable	Notes
SMA-JBG2	Ø2.2	SFT-50-2-1	Stainless steel screw sleeve
SMA-JB3G-4	Ø3.6	SFT-50-3-1	passivation, copper shell gold plating

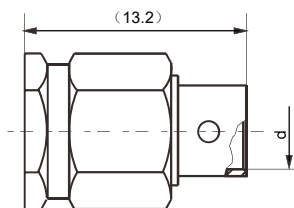
SMA-JB2G

## CABLE STRIPPING SIZE

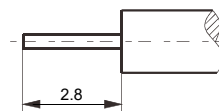


Type	d	Cable	Notes
SMA-JB2-4	Ø2.2	SFT-50-2-1	Retractable screw sleeve
SMA-JB3-5	Ø3.6	SFT-50-3-1	Retractable screw sleeve

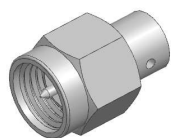
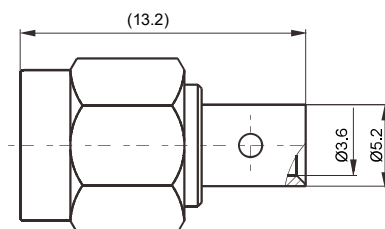
SMA-JB2-4

**SMA-JB2-5**

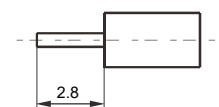
## CABLE STRIPPING SIZE



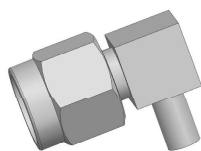
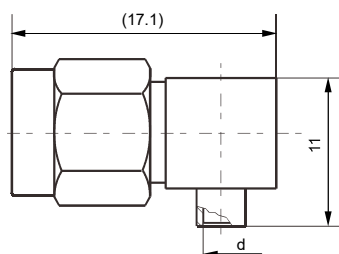
Type	D	Cable
SMA-JB2-5	Ø2.2	SFT-50-2-1
SMA-JB3-6	Ø3.6	STF-50-3-1

**SMA-JB3-8**

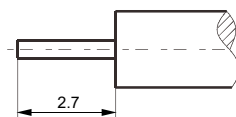
## CABLE STRIPPING SIZE



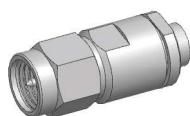
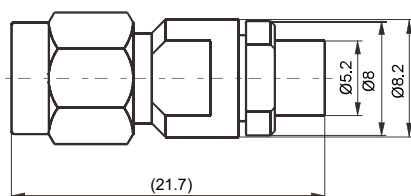
Type	Cable
SMA-JB3-8	SFT-50-3-1

**SMA-JWB2**

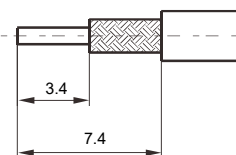
## CABLE STRIPPING SIZE



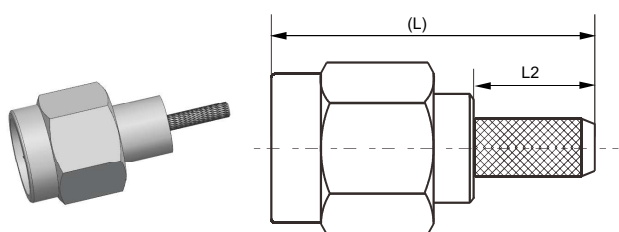
Type	D	Cable
SMA-JWB2	Ø2.2	SFT-50-2-1
SMA-JWB3	Ø3.6	STF-50-3-1

**SMA-J402G**

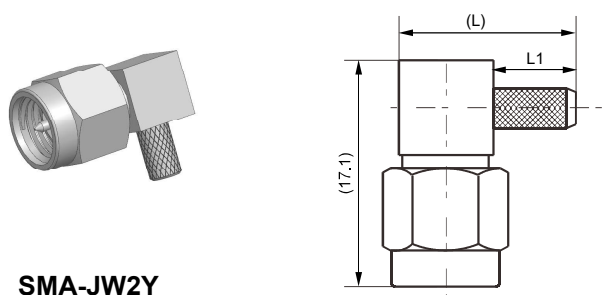
## CABLE STRIPPING SIZE



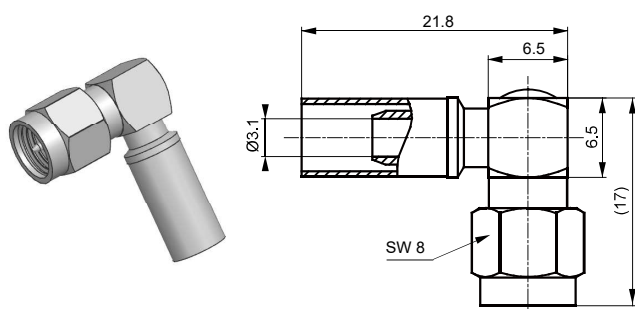
Type	Cable
SMA-J402G	TFLEX402

**SMA-J4Y**

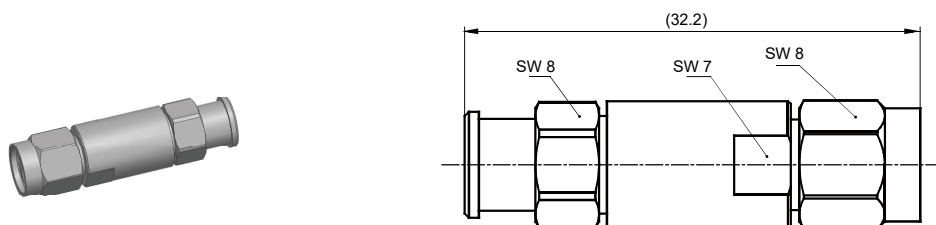
Type	L	L1	L2	L3	Cable
SMA-J4Y	21.5	12.5	8.0	10.0	SFF-50-2-2
					SYV-50-2-2
SMA-J5Y	23.7	14.5	10.0	12.0	SFF-50-3
					SYV-50-3-1

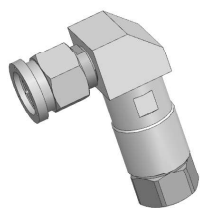
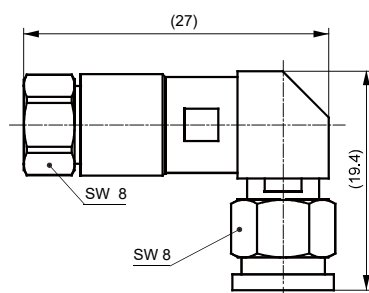
**SMA-JW2Y**

Type	L	L1	L2	A	B	C	Cable
SMA-JW2Y	13.0	5.7	6.5	2.7	4.6	10.2	SFF-50-1
							SYV-50-1
SMA-JW3Y-1	13.0	5.7	6.5	2.7	4.6	10.2	SFF-50-1.5-1
							SYV-50-2-1
SMA-JW4Y	16.0	8.0	10.0	3.0	5.0	13.0	SFF-50-2-2
							SYV-50-2-2
SMA-JW5Y	18.0	10.0	12.0	3.0	5.0	15.0	SFF-50-3-1
							SYV-50-3

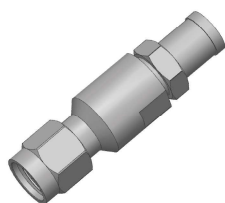
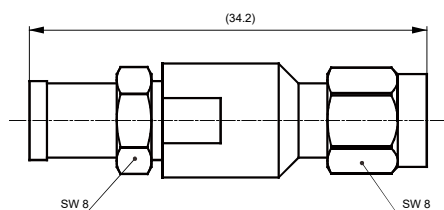
**SMA-JW5AY**

Type	Cable	Notes
SMA-J480BG	CXN3449 or equivalent cable	stainless steel

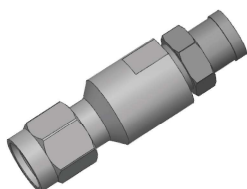
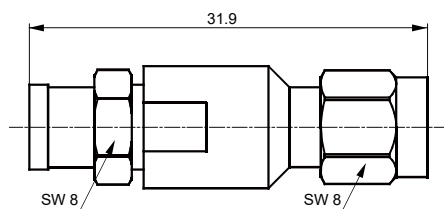
**SMA-J480BG**

**SMA-JW480BG**

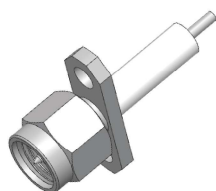
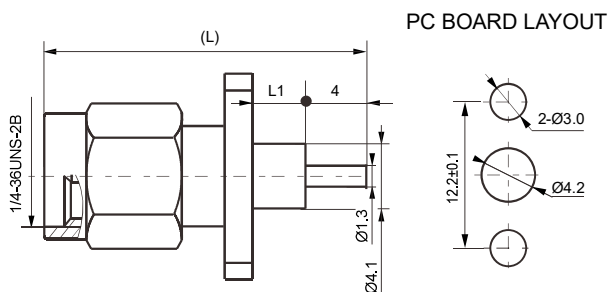
Type	Cable	Notes
SMA-JW480BG	CNX3449 or equivalent cable	stainless steel

**SMA-J141G**

Type	Cable	Notes
SMA-J141G	CLL50141 or equivalent cable	stainless steel

**SMA-J5AG**

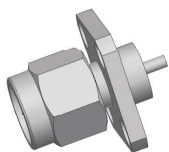
Type	Cable	Notes
SMA-J5AG	RG142/U or equivalent cable	stainless steel

**SMA-JFD-10**

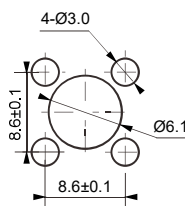
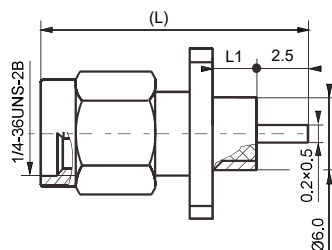
Type	L	L1
SMA-JFD10	25.4	8.6
SMA-JFD11	18.7	2.0



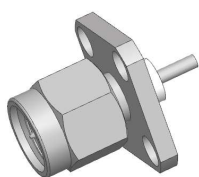
## PC BOARD LAYOUT



SMA-JFD-12

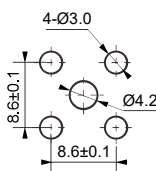
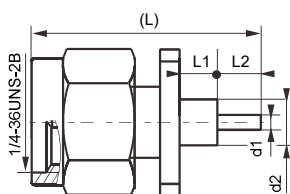


Type	L	L1
SMA-JFD-12	17.8	2.4
SMA-JFD-13	18.6	3.2
SMA-JFD-14	20.2	4.8
SMA-JFD-15	19.7	4.0



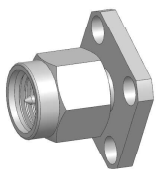
SMA-JFD-16

## PC BOARD LAYOUT

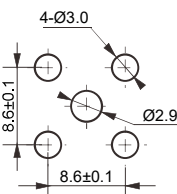
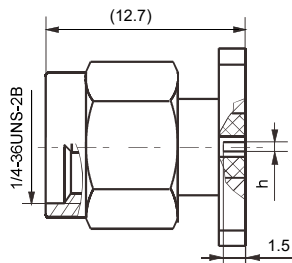


Type	L	L1	L2	d1	d2
SMA-JFD-16	18.7	2.0	4.0	Ø1.3	Ø4.1
SMA-JFD-17	23.1	8.4	2.0	Ø1.3	Ø4.1
SMA-JFD-18	25.1	8.4	4.0	Ø1.3	Ø4.1
SMA-JFD-19	17.3	4.0	0.6	Ø1.4	Ø4.1
SMA-JFD-20	24.9	4.0	8.0	Ø1.3	Ø4.1
SMA-JFD-21	23.9	3.0	8.0	Ø1.3	Ø4.1

## PC BOARD LAYOUT

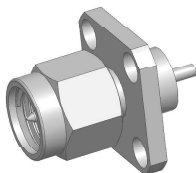


SMA-JFD-22

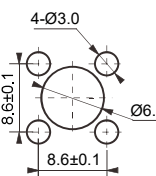
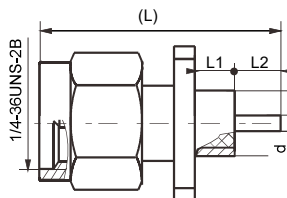


Type	h
SMA-JFD-22	0.2
SMA-JFD-23	0.4

## PC BOARD LAYOUT

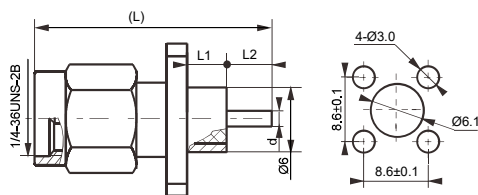
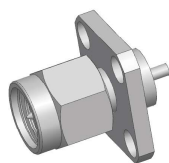


SMA-JFD-24



Type	L	L1	L2	d
SMA-JFD-24	18.9	3.2	3.0	Ø1.3
SMA-JFD-25	19.2	4.0	2.5	Ø1.3

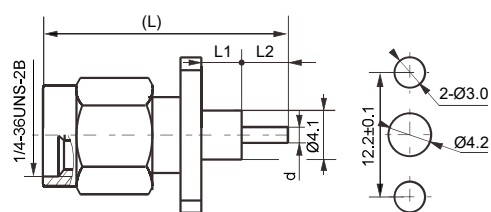
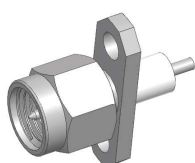
## PC BOARD LAYOUT



Type	L	L1	L2	d
SMA-JFD-27	17.6	2.4	2.5	Ø1.0
SMA-JFD-28	17.2	3.0	1.5	Ø0.7
SMA-JFD-29	18.4	1.0	4.5	Ø1.3

SMA-JFD-27

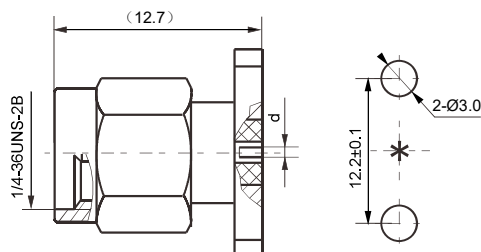
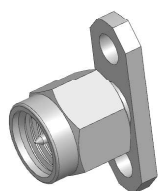
## PC BOARD LAYOUT



Type	L	L1	L2	d
SMA-JFD-30	20.7	5.0	3.0	Ø0.8
SMA-JFD-31	20.7	6.0	2.0	Ø1.3
SMA-JFD-32	24.7	4.0	8.0	Ø1.3
SMA-JFD-33	20.5	5.0	2.7	Ø1.3

SMA-JFD-30

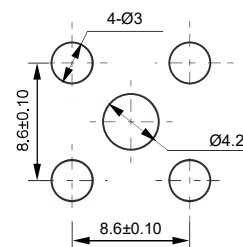
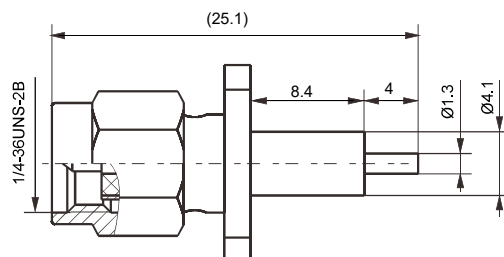
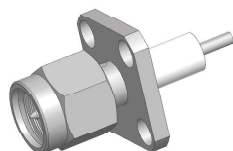
## PC BOARD LAYOUT



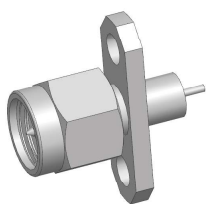
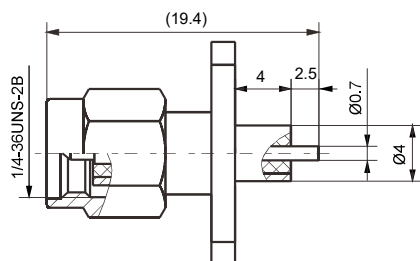
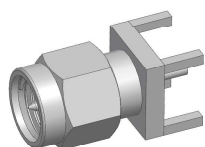
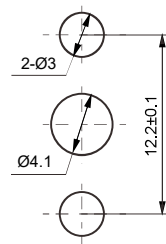
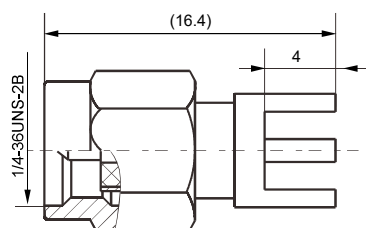
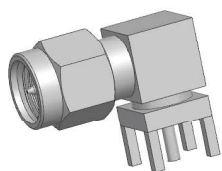
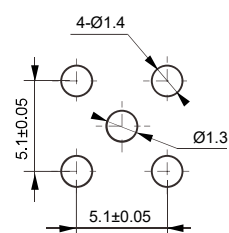
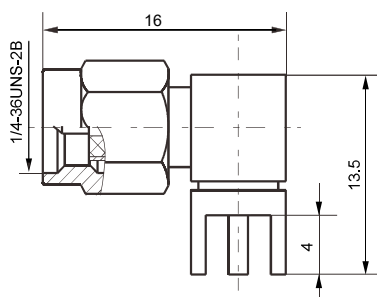
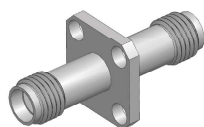
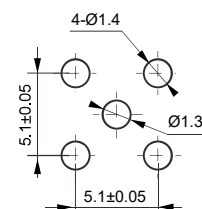
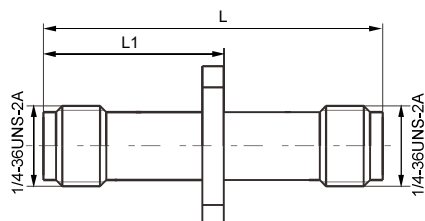
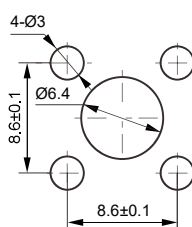
Type	d	Pin
SMA-JFD-34	Ø0.4	—
SMA-JFD-35	Ø0.9	Ø0.9~Ø0.93
SMA-JFD-36	Ø0.9	Ø0.9~Ø0.93
SMA-JFD-37	Ø0.8	Ø0.8~Ø0.83
SMA-JFD-38	Ø0.5	Ø0.48~Ø0.52

SMA-JFD-34

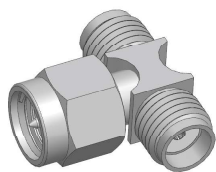
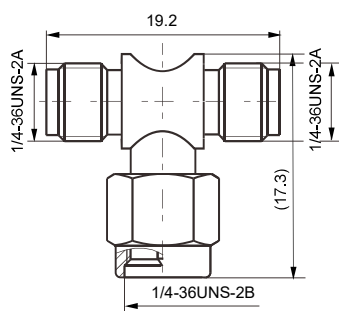
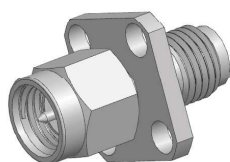
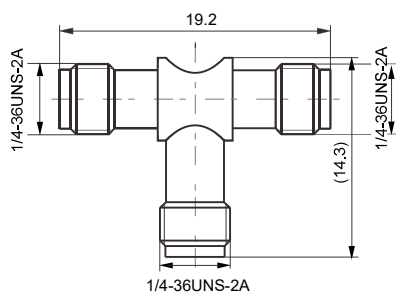
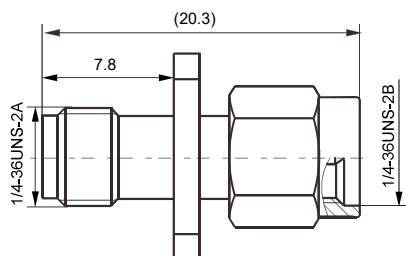
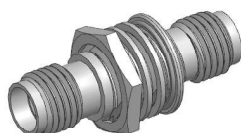
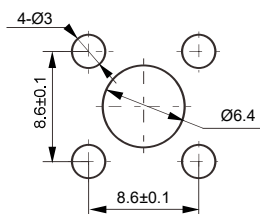
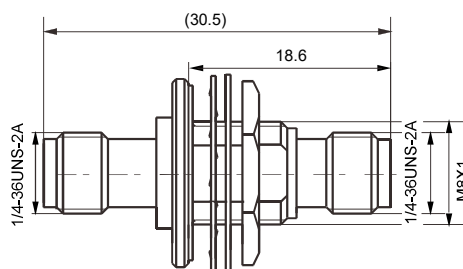
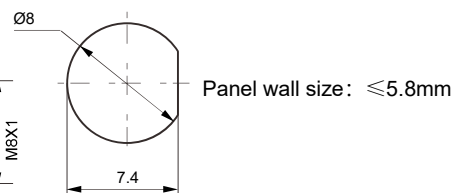
## PC BOARD LAYOUT

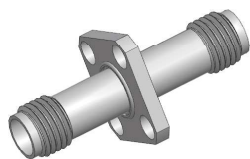


SMA-JFDG-18

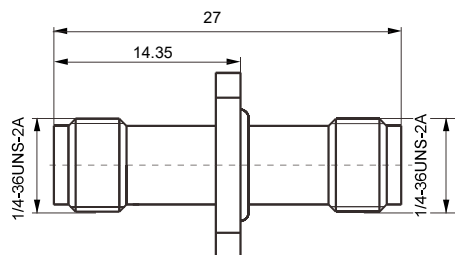
**SMA-JFDG-41****PC BOARD LAYOUT****SMA-JHD****PC BOARD LAYOUT****SMA-JWHD****PC BOARD LAYOUT****SMA-KFK****PC BOARD LAYOUT**

Type	L	L1
SMA-KFK	27.0	14.35
SMA-KFK-1	30.0	20.2
SMA-KFK-2	23.0	10.0
SMA-KFK-3	23.0	14.3

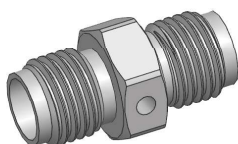
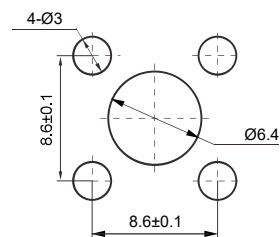
**SMA-KJK****SMA-KKK****SMA-KFJ****PC BOARD LAYOUT****SMA-KYK-1****PC BOARD LAYOUT**



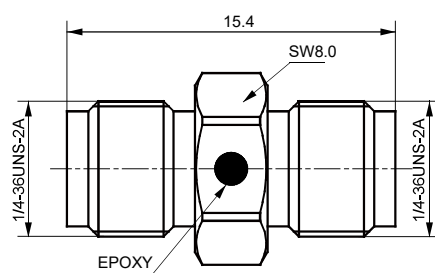
**SMA-KFK-4**



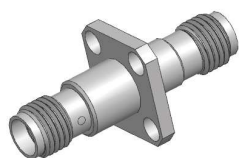
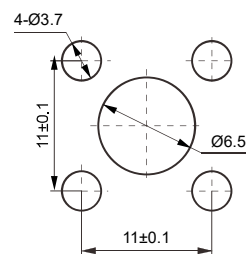
PC BOARD LAYOUT



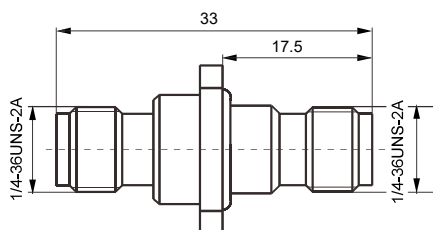
**SMA-KK**



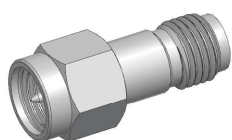
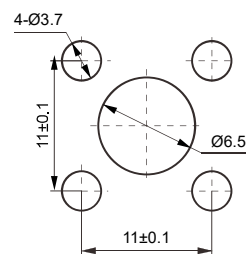
PC BOARD LAYOUT



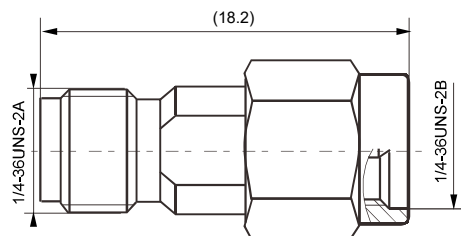
**SMA-M-KFK-5**

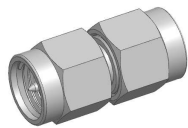
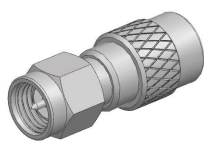
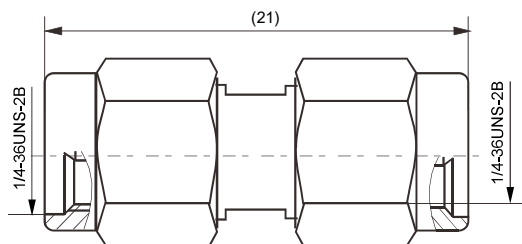
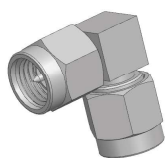
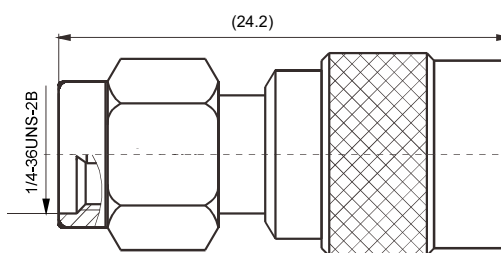
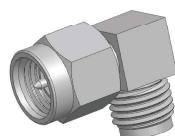
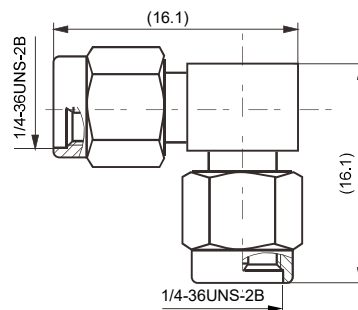
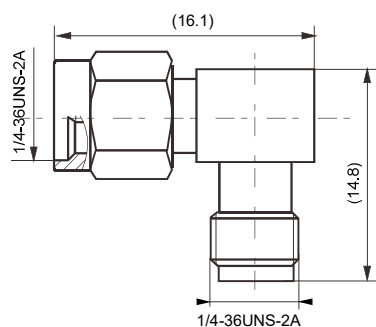


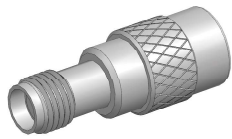
PC BOARD LAYOUT



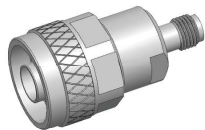
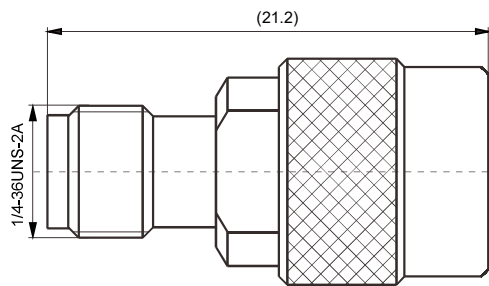
**SMA-JK**



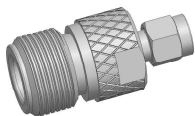
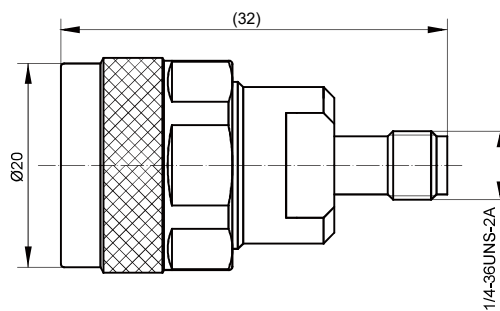
**SMA-JJ****(SO)/SMA-JJG****SMA-JWJ****SMA-JWK**



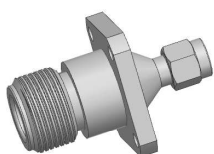
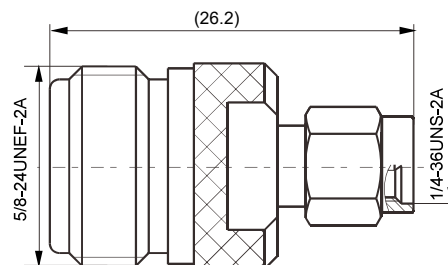
**(SO)/SMA-KJ**



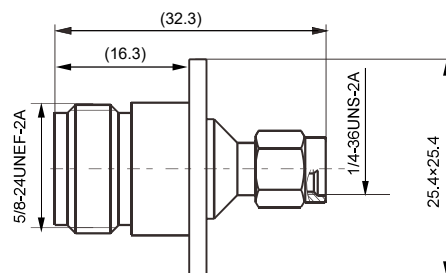
**N/SMA-JK**



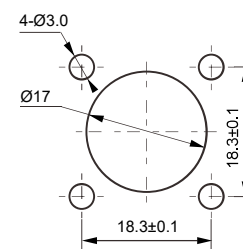
**N/SMA-KJ**

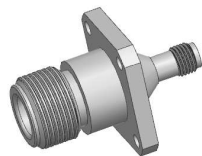
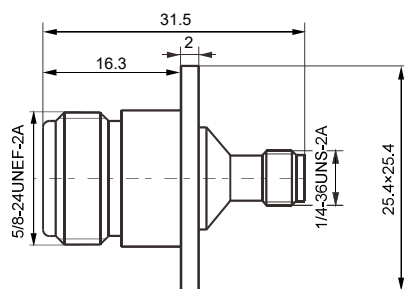
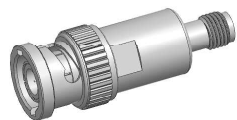
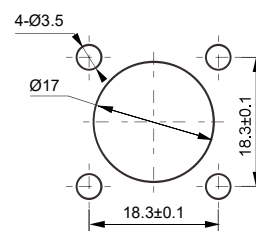
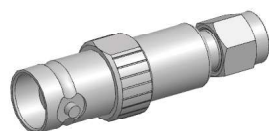
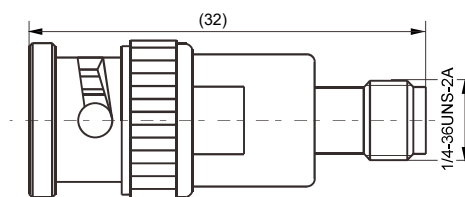
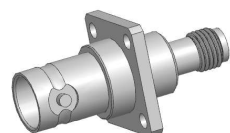
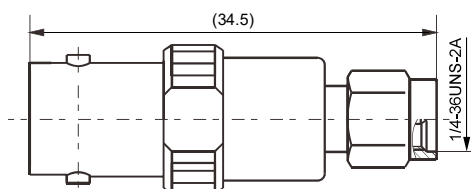
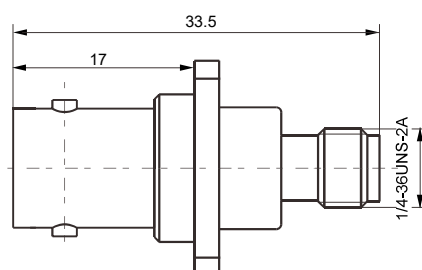
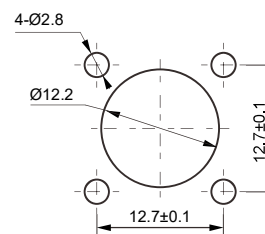


**N/SMA-KFJ**

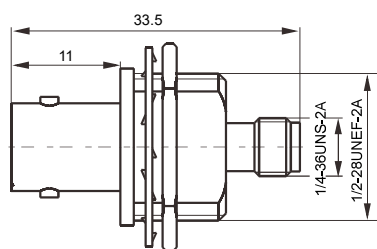
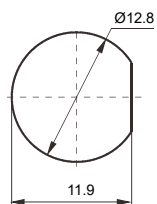
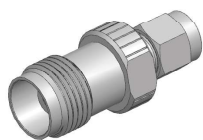
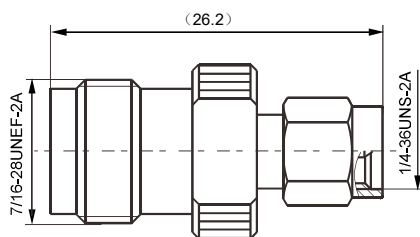
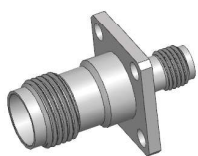
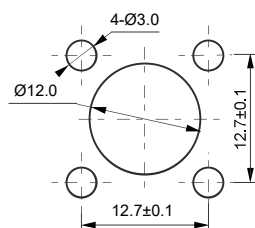
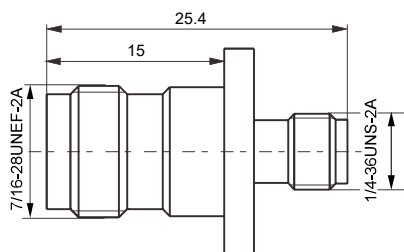
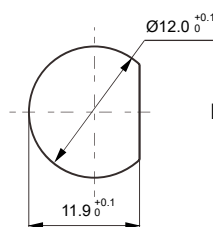
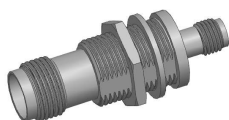
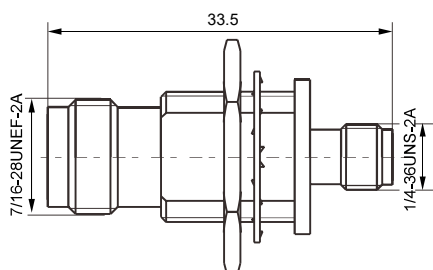


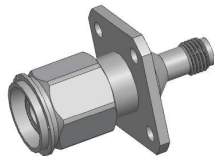
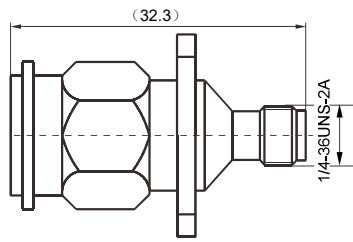
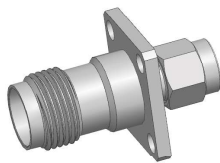
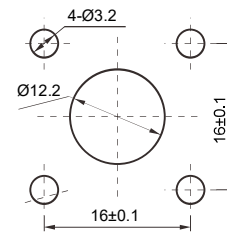
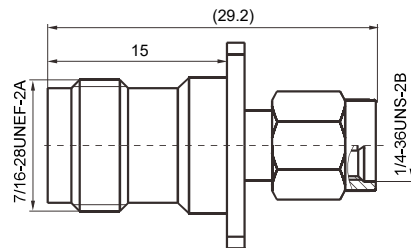
**PC BOARD LAYOUT**



**N/SMA-KFK****PC BOARD LAYOUT****BNC/SMA-JK****BNC/SMA-KJ****BNC/SMA-KFK****PC BOARD LAYOUT**



**BNC/SMA-KYK****PC BOARD LAYOUT**Panel wall size:  $\leq 7.0\text{mm}$ **TNC/SMA-KJ****PC BOARD LAYOUT****TNC/SMA-KFK****PC BOARD LAYOUT**Panel wall size:  $\leq 8.4\text{mm}$ **TNC/SMA-KYK**

**TNC/SMA-JFK****PC BOARD LAYOUT****TNC/SMA-KFJ****PC BOARD LAYOUT**