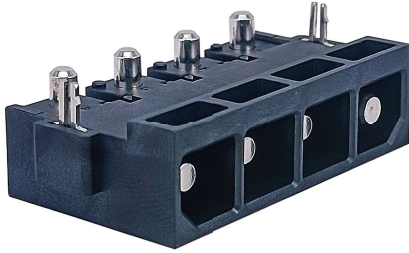


HFLXPR1-M4RB-1

POWER CONNECTOR PLUG



Features

- The socket is made of copper and wound spring structure, which integrates the current carrying capacity of copper and the elastic force of spring, greatly improving the current carrying capacity
- It has the characteristics of reliable connection, soft insertion, low contact resistance and high current carrying density
- Used for charging station, UPS power supply, Electric power supply and their control signals
- Mating With: HFLXPR1-F4V-1 Power connector socket

RoHS compliant

ELECTRICAL DATA

Rated Voltage	600V
Rated current	60A
Voltage Proof	3000VAC
Contact Resistance	0.4mΩ max.
Insulation Resistance	1000MΩ min.

Notes: 1) The data shown above are initial values.

CHARACTERISTICS

Temperature Range	-40°C ~ 180°C
Salt Mist	72h
Humidity Temperature	25°C ~ 40°C, Relative Humidity Refer to GB2423.04, 10 times ³⁾
Temperature life	96 hours at 125°C(+/-5°C) ³⁾
Thermal Shock	-40°C(30 min), +125°C(30 min), 5 times ³⁾
Mechanical Shock	Acceleration of 50g, half sine wave, lasting 11 ms, ±X, ±Y, ±Z direction 3 times each, the current instantaneous break time is less than 1μs ⁽²⁾
Vibration	Frequency 10Hz~55Hz~10Hz, displacement amplitude 1.52mm, each vertical direction lasts for 55 min, the current instantaneous break time is less than 1μs ⁽²⁾
Protection Grade	/
Quality	Approx. 16.2g
Marking Mode	Laser etching
Durability	100 Times Min
Termination	PCB

Notes: 1) The data shown above are initial values.

- 2) Meet the parts without damage, Insulation resistance and withstand voltage meet the requirements of electrical performance parameters.
3) No physical damage, electrical and mechanical properties meet sequential testing.

STORAGE REQUIREMENT

Environment temperature	-10°C to +40°C
Humidity	80% Max
Ambient gas	no acidity, no alkalescence and other corrosive gas
Stockpile period	Doesn't exceed one year from production date

Notes: 1) The data shown above are initial values.

ORDERING INFORMATION

Type	HFLXPR1	-M	4	R	B	-1
Type of Contact	M: Male					
No.of Contact	4: 4 Contacts					
Structural Form	R: Right Angle					
Termination	B: PCB					
Extension No.	1: Extension					



HONGFA RELAY

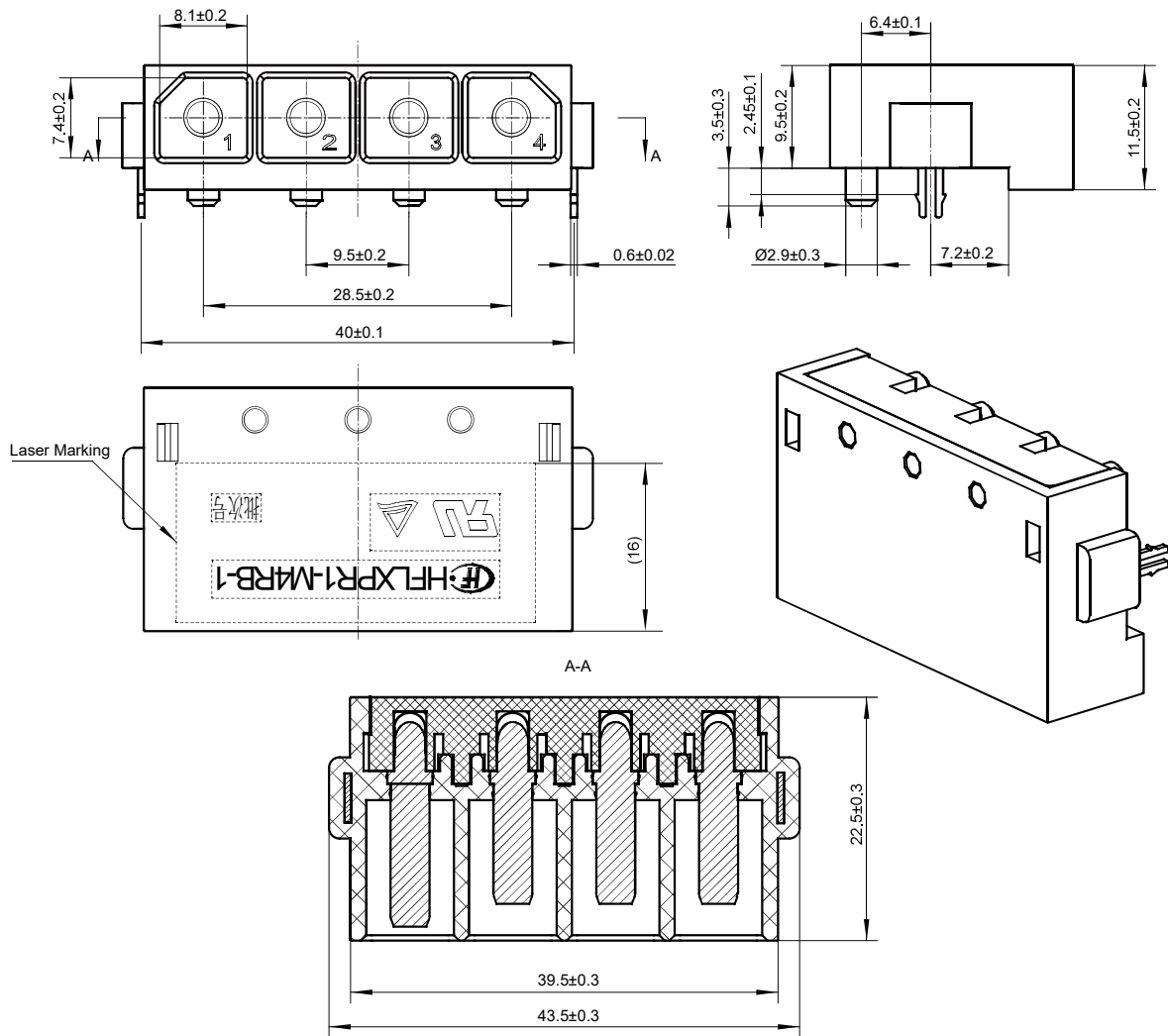
ISO9001, IATF16949, ISO14001, ISO45001, IECQ QC 080000 CERTIFIED

2023 Rev. 1.00

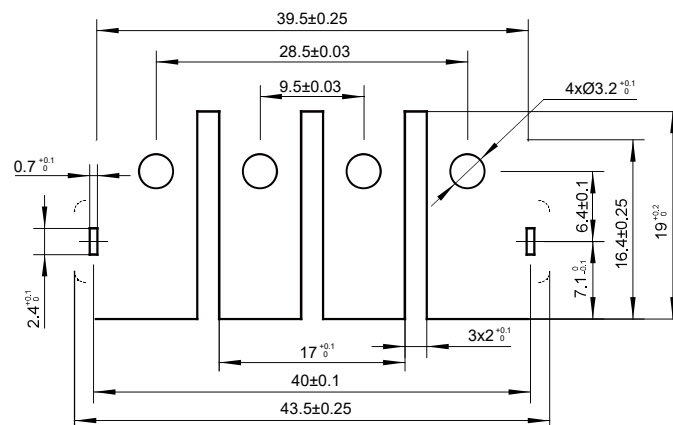
OUTLINE DIMENSIONS AND PC BOARD LAYOUT

Unit: mm

Outline Dimensions



PCB Layout (Bottom view)



Disclaimer

The specification is for reference only. Specifications subject to change without notice.

We could not evaluate all the performance and all the parameters for every possible application. Thus the user should be in a right position to choose the suitable product for their own application. If there is any query, please contact Hongfa for the technical service. However, it is the user's responsibility to determine which product should be used only.

© Xiamen Hongfa Electroacoustic Co., Ltd. All rights of Hongfa are reserved.