

18FF Series

PCB Relay Socket



ORDERING INFORMATION

	18FF	-2Z	-A2
Type			
Contact arrangement	2Z: 2 Form C		
	4Z: 4 Form C		
Termination & mounting	A2: PCB terminal		



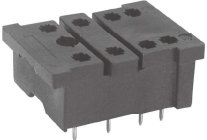
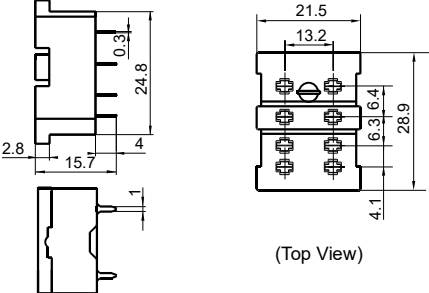
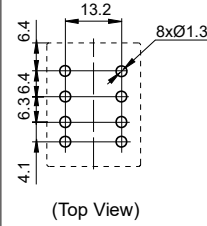
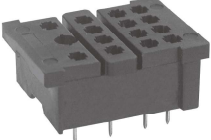
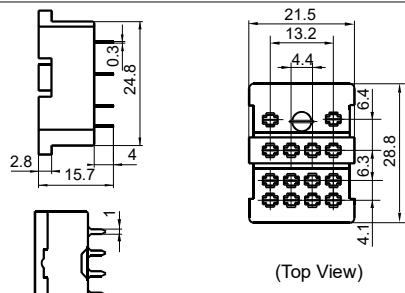
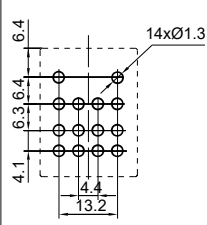
File No.: E253370

CHARACTERISTICS

Type	Nominal Voltage	Nominal Current	Ambient Temperature	Dielectric Strength min.	Screw Torque	Wire Strip Length	Unit weight	Min. package qty.
18FF-2Z-A2	250VAC	7A	-40°C to 70°C	2000 Vrms	—	—	Approx.8g	20
18FF-4Z-A2	250VAC	7A*	-40°C to 70°C	2000 Vrms	—	—	Approx.8g	20

Note: The total current of "*" sockets shall not exceed 20A.

OUTLINE DIMENSIONS, WIRING DIAGRAM AND PC BOARD LAYOUT

Socket (If need accessry,please order with type.)	Outline Dimensions	PCB Layout	Accessory Available
18FF-2Z-A2  PCB Terminal, PCB mounting Applicable for 2 poles	 (Top View)	 (Top View)	Metallic retainer: 18FF-H1
18FF-4Z-A2  PCB Terminal, PCB mounting Applicable for 4 poles	 (Top View)	 (Top View)	Metallic retainer: 18FF-H1

Notes: If need accessry,please order with type.



HONGFA RELAY

ISO9001,IATF16949,ISO14001,OHSAS18001,IECQ QC 080000 CERTIFIED

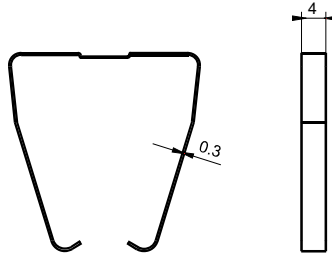
2022 Rev. 1.01

DIMENSION OF RELATED ACCESSORY (AVAILABLE)

Unit: mm

Retainer

18FF-H1 (metallic retainer)



SELECTION OF PARTS

Type of Relay	Mounting termination	Socket	Retainer	Marker	Module
HF18FF/□□-2Z1□□□	without button	18FF-2Z-A2	18FF-H1	—	—
		18FF-2Z-C1	18FF-H2/H3		
		18FF-2Z-C2			
		18FZ-2Z-C2			
		18FF-2Z-C4		18FF-M1	HFAA~HFHU
		18FF-2Z-C5			
		18FF-2Z-C8	18FF-H4/H5	18FF-M3	
		18FF-2Z-C9			
		18FF-2Z-C10			
		HF18FF/□□-3Z1□□□	18FF-3Z-C4		
18FF-3Z-C5					
HF18FF/□□-4Z1□□□			18FF-4Z-A2	18FF-H1	—
		18FF-4Z-C1	18FF-H2		
		18FF-4Z-C2			
		18FZ-4Z-C2			
		18FF-4Z-C4	18FF-H4/H5	18FF-M1	HFAA~HFHU
		18FF-4Z-C5			
		18FF-4Z-C8		18FF-M3	
	18FF-4Z-C9				
18FF-4Z-C10	18FF-M1				
HF18FH/□□-2Z1□□□	with button	18FF-2Z-C1	18FF-H3	-	—
		18FF-2Z-C2			
		18FZ-2Z-C2			
		18FF-2Z-C4	18FF-H4/H5	18FF-M1	HFAA~HFHU
		18FF-2Z-C5			
		18FF-2Z-C8		18FF-M3	
		18FF-2Z-C9			
		18FF-2Z-C10			
		18FF-3Z-C4		18FF-M1	
		18FF-3Z-C5			

SELECTION OF PARTS

Type of Relay	Mounting termination	Socket	Retainer	Marker	Module
HF18FH/□□-4Z1□□□	with button	18FF-4Z-C4	18FF-H4/H5	18FF-M1	HFAA~HFHU
		18FF-4Z-C5			
		18FF-4Z-C8			
		18FF-4Z-C9			
		18FF-4Z-C10			
HF18FF-G/□□-2Z1□□□	without button	18FF-2Z-C1(734)	18FF-H2/H3	-	-
		18FF-2Z-C2(734)			
		18FF-2Z-C4(734)	18FF-H4/H5	18FF-M1	HFAA~HFHU
		18FF-2Z-C5(734)			
		18FF-3Z-C5(734)			
HF18FH-G/□□-2Z1□□□	with button	18FF-2Z-C1(734)	18FF-H3	-	-
		18FF-2Z-C2(734)			
		18FF-2Z-C4(734)	18FF-H4/H5	18FF-M1	HFAA~HFHU
		18FF-2Z-C5(734)			
		18FF-3Z-C5(734)			
HF18FZ/□□-2Z□□□1/2□	without button	18FF-2Z-A2	18FF-H1	—	—
		18FF-2Z-C1	18FF-H2/H3		
		18FF-2Z-C2			
		18FZ-2Z-C2			
		18FF-2Z-C4	18FF-H4/H5	18FF-M1	HFAA~HFHU
		18FF-2Z-C5		18FF-M3	
		18FF-2Z-C8			
		18FF-2Z-C9			
		18FF-2Z-C10			
		HF18FZ/□□-4Z□□□1/2□	without button	18FF-4Z-A2	18FF-H1
18FF-4Z-C1	18FF-H2				
18FF-4Z-C2					
18FZ-4Z-C2					
18FF-4Z-C4	18FF-H4/H5			18FF-M1	HFAA~HFHU
18FF-4Z-C5				18FF-M3	
18FF-4Z-C8					
18FF-4Z-C9					
18FF-4Z-C10					
HF18FZ/□□-2Z□□□3□	with button	18FF-2Z-C1	18FZ-H1	—	—
		18FF-2Z-C2			
		18FZ-2Z-C2			
		18FF-2Z-C4	18FF-H4	18FF-M1	HFAA~HFHU
		18FF-2Z-C5		18FF-M3	
		18FF-2Z-C8			
		18FF-2Z-C9			
		18FF-2Z-C10			

SELECTION OF PARTS

Type of Relay	Mounting termination	Socket	Retainer	Marker	Module
HF18FZ/□□-4Z□□□3□	with button	18FF-4Z-C1	18FZ-H1	—	—
		18FF-4Z-C2			
		18FZ-4Z-C2			
		18FF-4Z-C4	18FF-H4	18FF-M1	HFAA~HFHU
		18FF-4Z-C5		18FF-M3	
		18FF-4Z-C8			
		18FF-4Z-C9			
		18FF-4Z-C10		18FF-M1	

Things to be noticed when selecting sockets:

1. Please choose suitable relay socket according to the actual mounting environment, relay contact poles and terminal layout. If there is any query on selection, please contact Hongfa for the technical service;
2. Relevant accessories must be selected separately. Please indicate the model of the selected accessories when ordering;
3. Main outline dimension, outline dimension > 50mm, tolerance should be ±1mm; 20mm < outline dimension ≤ 50mm, tolerance should be ±0.5mm; 5mm < outline dimension ≤ 20mm, tolerance should be ±0.4mm, outline dimension ≤ 5mm, tolerance should be ±0.3mm;
4. DIN rail mounting: recommend to use standard rail 35×7.5×1mm, 35×15×1mm.

Disclaimer

The specification is for reference only. See to "Terminology and Guidelines" for more information. Specifications subject to change without notice. We could not evaluate all the performance and all the parameters for every possible application. Thus the user should be in a right position to choose the suitable product for their own application. If there is any query, please contact Hongfa for the technical service. However, it is the user's responsibility to determine which product should be used only.

© Xiamen Hongfa Electroacoustic Co., Ltd. All rights of Hongfa are reserved.