



Features

- Wide voltage input range: 100VAC to 240VAC
- With over-current protection, short-circuit protection and other safety applications
- Working temperature range: -25°C to 85°C
- Outline dimensions: (25.4 × 25.4 × 17.8)mm

PRODUCT SELECTION TABLE

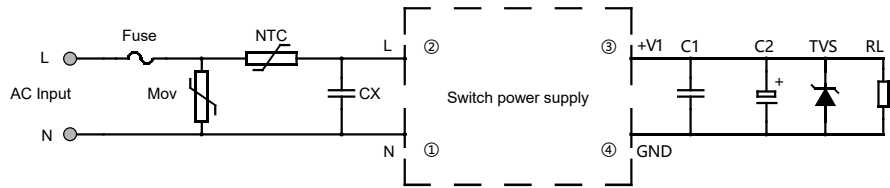
Type	Output power	Nominal output voltage and current (VO/IO)	Efficiency (230VAC,%/Typ.)	Max. capacitive load (μF)
HFGP1 /02S12-YAW	2W	12V/167mA	73	470
HFGP1 /02S24-YAW		24V/84mA	73	220

CHARACTERISTIC

Input	Input voltage range	100VAC to 240VAC
	Input frequency range	47Hz to 63Hz
	Input current	0.08A MAX (@110VAC)
		0.06A MAX (@220VAC)
	Standby power	0.3W MAX
	Hot plug	Not support
Output	Rated output voltage	12VDC,24VDC
	Rated output load	12V/167mA,24VDC/84mA
	Output Voltage Accuracy	±5%
	Voltage stability (full load)	±5%
	Load stability (10% to 100% load)	±5%
	Efficiency	≥73%
	Overcurrent Protection	≥120% In, Self recovery
	Short circuit protection	Hiiccup mode, self recovery
Common features	Dielectric strength(Between input and output)	≥2500VAC, 3mA, 1min
	Ambient temperature	-25°C to 85°C
	Ambient humidity	10%RH to 90%RH
	Storage temperature	-40°C to 105°C
	Storage humidity	10%RH to 90%RH



TYPICAL APPLICATION CIRCUIT DIAGRAM

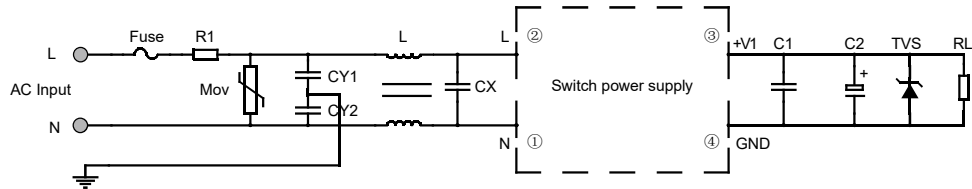


型号	FUSE	MOV	NTC	CX	C1	C2	TVS
HFGP1 /02S12-YAW	1A/250V, Slow fuse	14D561K	10D-11	0.47 μ F/305VAC	1 μ F	1000 μ F	SMBJ7.0A
HFGP1 /02S24-YAW							

Note: ①MOV varistor and CX safety capacitor are used to suppress surge and lightning strikes on the input side. C1 is a ceramic capacitor to remove high frequency noise. C2 is a high-frequency low-resistance electrolytic capacitor with a withstand voltage greater than 2 times the rated output voltage, used for energy storage filtering. It is recommended to use TVS tube for anti-post surge lightning strike;

②The parameters in the table above are recommended values and are for reference only.

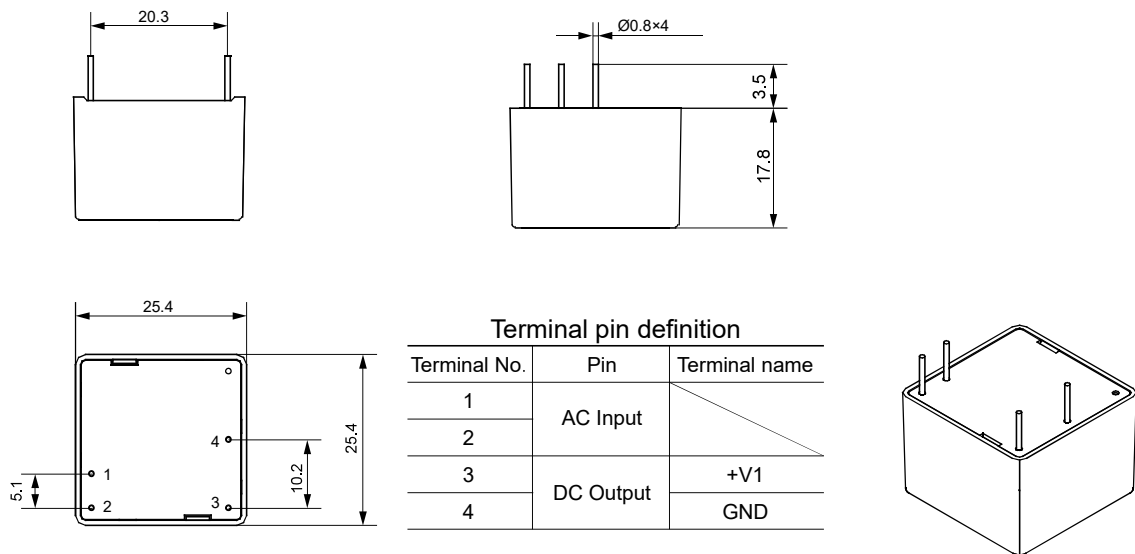
EMC SOLUTIONS—RECOMMEENDED CIRCUIT



Component model	Recommended value
Fuse	1A/250V, Slow fuse
R1	47 Ω /3W
MOV	14D561K
CY1	2.2nF/400V
CY2	2.2nF/400V
L	Common Mode Inductance10 mH
CX	0.1 μ F/305VAC

Note: In order to obtain better EMC performance, it is recommended to design the circuit as above.

OUTLINE DIMENSIONS,INSTALLATION HOLE POSITION



ORDERING INFORMATION

	HFGP1	-02	S	12	-Y	AW	(XXX)
Type							
Output power		02: 2W					
Output channel		S: Single output					
Output voltage		12: 12VDC	24: 24VDC				
Installation		Y: PCB type					
Input voltage		AW: 100 VAC to 240 VAC					
Special code		Nil: Standard	XXX: Customer special requirement				

Notes: Special requirements of customers will be expressed as special code after being evaluated by Hongfa.

Disclaimer:

The specification is for reference only. See to "Terminology and Guidelines" for more information. Specifications subject to change without notice. We could not evaluate all the performance and all the parameters for every possible application. Thus the user should be in a right position to choose the suitable product for their own application. If there is any query, please contact Hongfa for the technical service. However, it is the user's responsibility to determine which product should be used only.