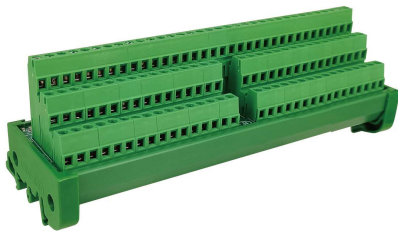


HFGD3/R32

IDC INTERFACE MODULE(32-CHANNEL)



Features

- IDC interface to double-row terminal block interface, saving space
- Installation method: DIN35
- 0.2-2.5mm²/24-16AWG Wide range of wiring capacity

CHARACTERISTIC

INPUT

| | |
|------------------------------|--|
| Nominal voltage | |
| Max. continuous load current | |
| Wiring polarity | |
| Terminal type | |
| Control channel Qty | |

OUTPUT

| | |
|------------------------------|--|
| Operating voltage | |
| Max. switching current | |
| Max. continuous load current | |
| Terminal type | |

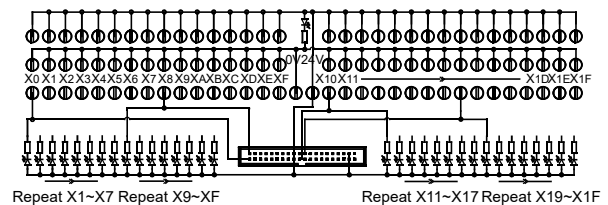
OTHER PARAMETER

| | | |
|-------------------------|----------------------------------|--------|
| Ambient temperature | -40~70℃ | |
| Storage temperature | -40~70℃ | |
| Vibration resistance | 10Hz~60Hz, 0.3mm DA | |
| | 60Hz~150Hz, 19.6m/s ² | |
| Shock resistance | 98m/s ² | |
| Standard compliance | IEC61010-1 | |
| Creepage distance | Between channels | ≥0.2mm |
| Clearance distance | Between channels | ≥0.2mm |
| Surge voltage(1.2/50μs) | 800V | |

PRODUCT INSTALLATION AND MAINTENANCE

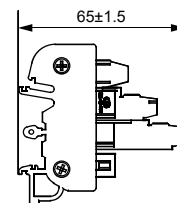
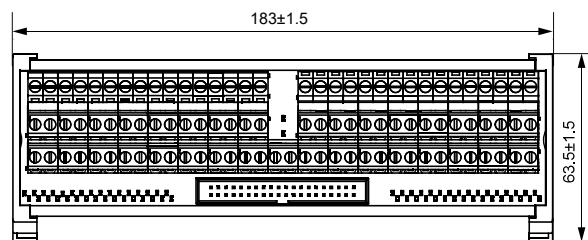
| | | |
|--------------|--|--|
| Installation | DIN35 guide rail installation (Compatible with 1.0mm and 1.2mm thickness) | |
|--------------|--|--|

CIRCUIT DIAGRAM



OUTLINE DIMENSIONS

Unit: mm



HONGFA INDUSTRIAL ELECTRONIC MODULE

ISO9001, IATF16949, ISO14001, OHSAS18001, IECQ QC 080000 CERTIFIED

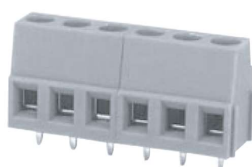
2022 Rev. 1.00

ORDERING INFORMATION

| | | | | | | |
|-----------------------|---|---|----|----|-----|-------|
| Type | HFGD3 / | R | 32 | -R | D24 | (XXX) |
| Product function code | R: input type | | | | | |
| Control Channel Qty | 32: 32 | | | | | |
| Installation | R: DIN-rail | | | | | |
| Rated input voltage | D24: 24VDC | | | | | |
| Special code | Nil:Standard XXX: Custmoter special requitment | | | | | |

Notes: Special requiements of customers will be expressed as special code after being evaluated by Hongfa.

Annex 1: Wiring terminal parameter table(HFLS1A-508/MAXX)



Features

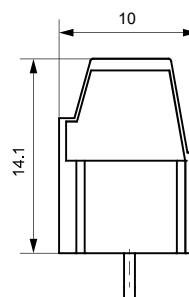
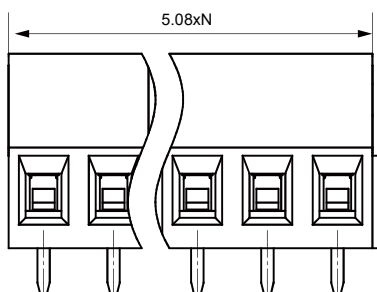
- PCB terminal block, lifting screw connector with pressing frame
- Use screwdriver for disassembly and assembly,with the torque of 0.4N·m

TECHNICAL SPECIFICATION

| | |
|--|---|
| Rated load | 10A 300V(UL Standard)/17.5A 250V(IEC Standard) |
| Poles | 2~24 |
| Pitch | 5.08mm |
| Conductor Cross Section | 0.2~2.5mm ² (Soild wire)/0.25~1.5mm ² (Strand wier) |
| Rated Dielectric Strenth | 2200VAC/min |
| Rated Withstand Pulse Voltage | 4kV |
| Ambient temperature | -40℃~105℃ |
| striping Length | 7mm |
| Tihgtening Torque | 0.4N·m |
| Insulation Material Type/Insulation Material Group | PA/I |

OUTLINE DIMENSIONS

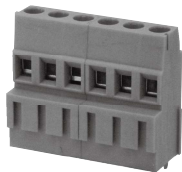
Unit: mm



Remark:

- 1) Some outline demensions of the product have no dimensional tolerance noted:outline dimension≤1mm; tolerance should be ±0.2mm; outline dimension>1mm and <5mm, tolerance should be ±0.4mm;
- 2) In the layout of PCB mounting holes,if no dimensional tolerance is noted,it shall be calculated as ±0.1mm.

Annex 2: Wiring terminal parameter table(HFLS 1A-508/MBXX)



Features

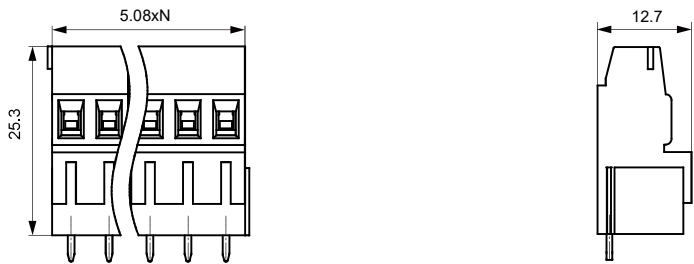
- PCB terminal block, lifting screw connector with pressing frame
- Use screwdriver for disassembly and assembly,with the torque of 0.4N·m

TECHNICAL SPECIFICATION

| | |
|--|--|
| Rated load | 10A 300V(UL Standard)/17.5A 250V(IEC Standard) |
| Poles | 2~24 |
| Pitch | 5.08mm |
| Conductor Cross Section | 0.2~2.5mm²(Soild wire/0.25~1.5mm²(Strand wier) |
| Rated Dielectric Strenth | 2200VAC/min |
| Rated Withstand Pulse Voltage | 4kV |
| Ambient temperature | -40℃~105℃ |
| striping Length | 7mm |
| Tihgtening Torque | 0.4N·m |
| Insulation Material Type/Insulation Material Group | PA/I |

OUTLINE DIMENSIONS

Unit: mm

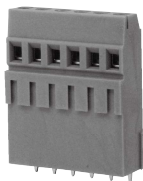


Remark:

1) Some outline demensions of the product have no dimensional tolerance noted:outline dimension≤1mm; tolerance should be ±0.2mm; outline dimension>1mm and <5mm, tolerance should be ±0.4mm;

2) In the layout of PCB mounting holes,if no dimensional tolerance is noted,it shall be calculated as ±0.1mm.

Annex 3: Wiring terminal parameter table(HFLS1A-508/MCXX)



Features

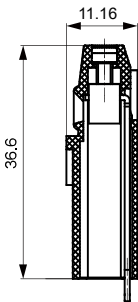
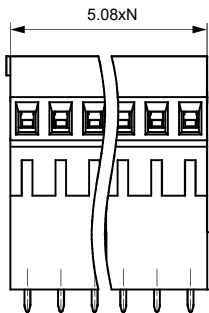
- PCB terminal block, lifting screw connector with pressing frame
- Use screwdriver for disassembly and assembly,with the torque of 0.4N·m

TECHNICAL SPECIFICATION

| | |
|--|---|
| Rated load | 10A 300V(UL Standard)/17.5A 250V(IEC Standard) |
| Poles | 2~24 |
| Pitch | 5.08mm |
| Conductor Cross Section | 0.2~2.5mm²(Soild wire)/0.25~1.5mm²(Strand wier) |
| Rated Dielectric Strenth | 2200VAC/min |
| Rated Withstand Pulse Voltage | 4kV |
| Ambient temperature | -40℃~105℃ |
| striping Length | 7mm |
| Tihgtening Torque | 0.4N·m |
| Insulation Material Type/Insulation Material Group | PA/I |

OUTLINE DIMENSIONS

Unit: mm



Remark:

1) Some outline demensions of the product have no dimensional tolerance noted:outline dimension≤1mm; tolerance should be ±0.2mm; outline dimension>1mm and <5mm, tolerance should be ±0.4mm;

2) In the layout of PCB mounting holes,if no dimensional tolerance is noted,it shall be calculated as ±0.1mm.

Disclaimer:

The specification is for reference only. See to "Terminology and Guidelines" for more information. Specifications subject to change without notice. We could not evaluate all the performance and all the parameters for every possible application. Thus the user should be in a right position to choose the suitable product for their own application. If there is any query, please contact Hongfa for the technical service. However, it is the user's responsibility to determine which product should be used only.