



Features

- 2-Channel NO AC solid state module
- Installation method: DIN35
- Optocoupler isolation between input and output, withstand voltage 4kV
- 5VDC to 30VDC wide voltage input range
- 5A 240VAC load capacity per channel
- 50Hz high speed switching capability
- 0.2-2.5mm² / 24-13AWG wide range wiring capacity

CHARACTERISTIC

INPUT	
Nominal voltage	5~30VDC
Power consumption Per Channel	< 220mW(@24VDC)
Wiring polarity	Polar (pay attention to wiring polarity)
Terminal type	Terminal block (See Annex 1)
Control channel Qty	2
OUTPUT	
Load voltage	12~240VAC
Rated current	5A/Channel
Wiring polarity	Apolar
Max. switching voltage	240VAC
Max. switching current	5A/Channel
Max. continuous current	5A/Channel
Terminal type	Terminal block (See Annex 1)
Control channel Qty	2
Conductor cross section	0.2~4mm ²
Leakage current	≤ 5μA (@240VAC)
Max. switching frequency	50Hz

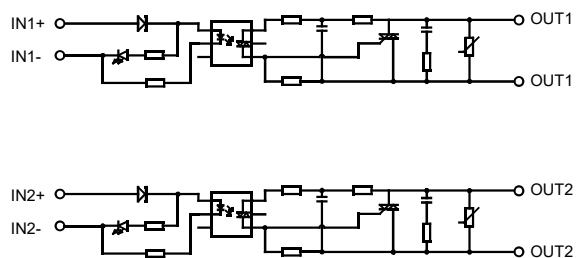
OTHER PARAMETER

Ambient temperature	-20℃～70℃	
Storage temperature	-20℃～70℃	
Vibration resistance	10Hz～60Hz,0.3mm DA	
	60Hz～150Hz, 19.6m/s ²	
Shock resistance	98m/s ²	
Standard compliance	IEC61010-1	
Creepage distance	Between output channels	≥1.5mm
	Between input and output	≥3mm
Clearance distance	Between output channels	≥1.5mm
	Between input and output	≥3mm
Surge voltage (1.2/50μs)	Between output channels	2.5kV
	Between input and output	4kV

PRODUCT INSTALLATION AND MAINTENANCE

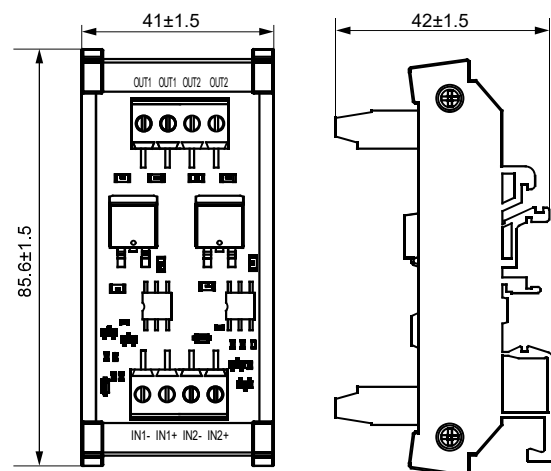
Installation	DIN35 guide rail installation (Compatible with 1.0mm and 1.2mm thickness)
Relay replacement	/

CIRCUIT DIAGRAM



OUTLINE DIMENSIONS

Unit: mm



HONGFA INDUSTRIAL ELECTRONIC MODULE

ISO9001, IATF16949, ISO14001, OHSAS18001, IECQ QC 080000 CERTIFIED

2022 Rev. 1.00

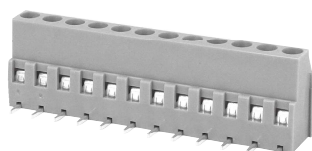
ORDERING INFORMATION

Type	HFGD2 /	C2-	A12~240	(XXX)
Control channel Qty	C2: 2-Channel			
Load voltage	A12~240: (12~240)VAC			
Special code	Nil: Standard	XXX: Customer special requirement		

Notes: Special requirements of customers will be expressed as special code after being evaluated by Hongfa.



Annex 1:Wiring terminal parameter table(HFLS1A36-500)



Features

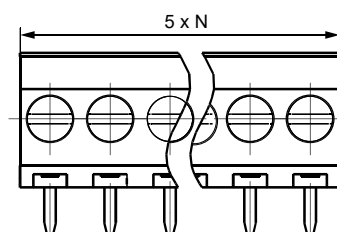
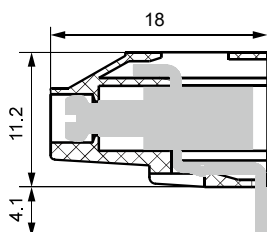
- PCB terminal block,lifting screw connector with pressing frame
- Use a screwdriver for disassembly and assembly,with the torque of 0.6 N·m
- Suitable for wave soldering, current carrying capacity up to 24A

TECHNICAL SPECIFICATION

Rated load	15A 300V(UL standard) /24A 250V(IEC standard)
Poles	2~24
Pitch	5.00mm
Conductor Cross Section	0.2~4mm ² /30~12AWG
Rated Dielectric Strength	2200VAC/min
Rated Withstand Pulse Voltage	4kV
Ambient Temperature	-40℃~105℃
Striping Length	8mm
Tightening Torque	0.5~0.6N·m
Insulation Material Type/Insulation Material Group	PA/I

OUTLINE DIMENSIONS

Unit: mm



Remark:

- 1) Some outline dimensions of the product have no dimensional tolerance noted: outline dimension $\leq 1\text{mm}$, tolerance should be $\pm 0.2\text{mm}$; outline dimension $> 1\text{mm}$ and $\leq 5\text{mm}$, tolerance should be $\pm 0.3\text{mm}$; outline dimension $> 5\text{mm}$, tolerance should be $\pm 0.4\text{mm}$;
- 2) In the layout of PCB mounting holes, if no dimensional tolerance is noted, it shall be calculated as $\pm 0.1\text{mm}$.

Disclaimer:

The specification is for reference only. See to "Terminology and Guidelines" for more information. Specifications subject to change without notice. We could not evaluate all the performance and all the parameters for every possible application. Thus the user should be in a right position to choose the suitable product for their own application. If there is any query, please contact Hongfa for the technical service. However, it is the user's responsibility to determine which product should be used only.