

Product datasheet


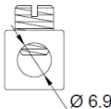


Specifications

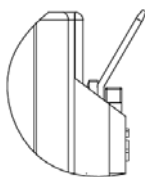


DP Contactor, XMC0-251, 1P+SHUNT(1NO), AC Coil

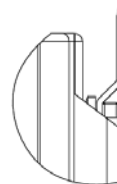
Main

| | | | |
|--------------------------------|--|---|-------------------|
| Product Series | XMC0 | | |
| Product or Component Type | Definite Purpose Contactors | | |
| Device Short Name | XMC0-251 | | |
| Contactor Application | HVAC, refrigeration, heating, data processing, welding, elevators, hoist & cranes, pool, commercial spa, and food service equipment industries, etc. | | |
| Poles Description | 1P+SHUNT | | |
| Rated Operational Voltage [Ue] | Power circuit: ≤ 600 V AC 50/60Hz | | |
| Full Load Ampere [FLA] | 25 A | | |
| Locked Rotor Ampere [LRA] | 150 A @ 240/277 V AC; 125 A @ 480 V AC; 100 A @ 600 V AC | | |
| Resistive Ampere [RES] | 35 A | | |
| Control Circuit Voltage [Us] | Code | Voltage | |
| | E | 24 V AC 50/60Hz | |
| | F | 110-120 V AC 50/60Hz | |
| | I | 208-220 V AC 50Hz | 208-240 V AC 60Hz |
| | L | 277 V AC 60Hz | |
| | N | 380-415 V AC 50Hz | 440-480 V AC 60Hz |
| Main Contact Terminals | C type: Slotted & Hex head washer w/ quick connect | | |
| | D type: Box Lug w/ quick connect | | |
| | E type: Box lug w/ quick connect (Line side) | | |
| | Slotted & Hex head washer w/ quick connect (Load side) | | |
| | F type: Slotted & Hex head washer w/ quick connect (Line side) | | |
| | Box lug w/ quick connect (Load side) | | |
| |  |  | |
| | C type on 25-40A FLA #10-32 combination phillips, slotted & 5/16 hex head with #8 washer | D type on 25-40A FLA #14-4 AWG Cu/Al | |

Coil Terminals



Normal type terminal



Vertical type terminal

Complementary

| | |
|--------------------------------|---|
| Maximum Horse Power Rating | 2 hp 240/277 V AC, 1phase |
| Pole Contact Composition | 1 NO |
| Pollution Degree | 3 |
| Control Circuit Voltage Limits | 0.8...1.1 Us: operational AC 50/60 Hz |
| @ 25°C (Cold state) | 0.2...0.75 Us: drop-out AC 50/60 Hz |
| Nominal Inrushed VA | E: 27 VA @ 24V 50 Hz, 25 VA @ 24V 60Hz |
| @ 25°C (Cold state) | F: 27 VA @ 120V 50 Hz, 25 VA @ 120V 60Hz |
| | I: 25 VA @ 220V 50 Hz, 27 VA @ 240V 60Hz |
| | L: 25 VA @ 277V 60Hz |
| | N: 27 VA @ 415V 50 Hz, 35 VA @ 480V 60Hz |
| Nominal Sealed VA | E: 8.5 VA @ 24V 50 Hz, 6.5 VA @ 24V 60Hz |
| @ 25°C (Cold state) | F: 9 VA @ 120V 50 Hz, 7 VA @ 120V 60Hz |
| | I: 8.5 VA @ 220V 50 Hz, 8.5 VA @ 240V 60Hz |
| | L: 8.5 VA @ 277V 60Hz |
| | N: 11 VA @ 415V 50 Hz, 12 VA @ 480V 60Hz |
| Maximum Operating Rate | Electrical: 360 cycs/h |
| | Mechanical: 3600 cycs/h |
| Tightening Torque | Power circuit: 25 lb-in - on screw terminals |
| | Power circuit: 25 lb-in - on box lug terminals |
| Auxiliary Contact Composition | N/A |
| Mounting Support | Screw |
| | 35mm DIN Rail (should be added a DIN rail adapter, suffix w/ "-123") |
| A2L Application | Suffix w/ "W" : Flame Arrest-protected Components for Use in Refrigeration and Air-conditioning Equipment Employing A2L Refrigerants. |
| Minimum Switching Load | 110 V AC, 1A |

Environment

| | |
|-------------------------------|---|
| Standards | UL 60947-4-1, GB/T 14048.4, IEC 60947-4-1, EN 60947-4-1 |
| Product Certifications | UL, CCC, TÜV |
| Permissible Ambient Air | -40 °C...70 °C (-40 °F...158 °F) for normal operating |
| Temperature Around the Device | -40 °C...70 °C (-40 °F...158 °F) for storage |
| Height | 81 mm |
| Width | 52 mm |
| Depth | 59 mm |
| Net Weight | 0.22 kg |

Packing Units

| | |
|-------------------------------------|----------|
| Unit Type of Package (bulk package) | 1 carton |
| Number of Units in Package | 50 pcs |
| Package Height | 17.5 cm |
| Package Width | 31 cm |
| Package Length | 46 cm |
| Package Weight | 11.9 kg |

Offer Sustainability

| | |
|----------------------------|------------|
| REACH Regulation | Conforming |
| EU RoHS Directive | Conforming |
| Mercury Free | Yes |
| China RoHS Regulation | Conforming |
| RoHS Exemption Information | Yes |

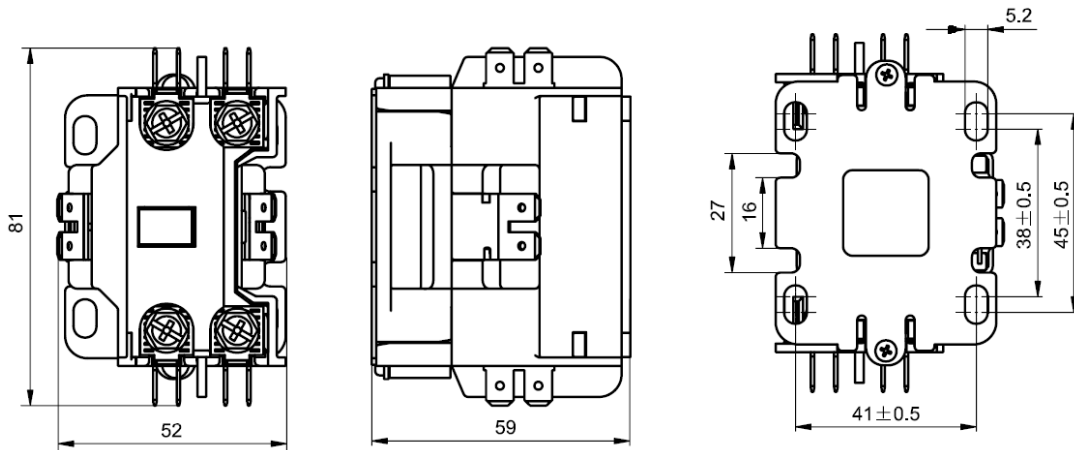
Contractual Warranty

| | |
|----------|-----------|
| Warranty | 18 months |
|----------|-----------|

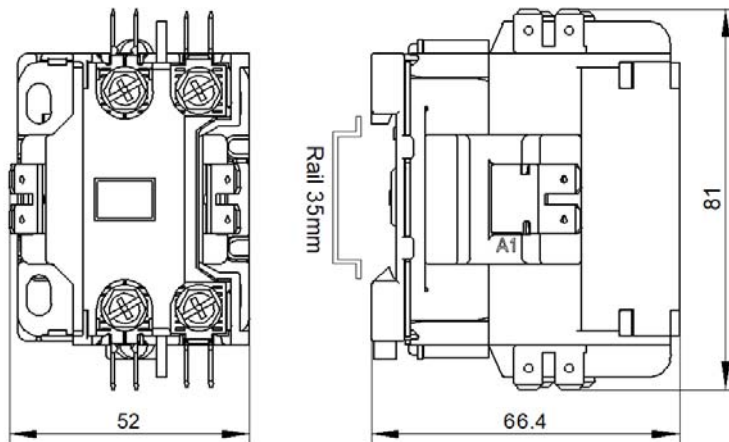
Dimensions

XMC0 1P+SHUNT (1NO)

AC Contactor:



Rail mounting contactor:



Note: The unit is mm. The tolerance for mounting holes: ± 0.5 ; for other external dimensions: ± 1.5 , unless otherwise specified.

Wiring Diagram

