

UEC1-EK...WK 切换电容接触器 UEC1-EK...WK Capacitive Contactor

⚠️ ⚠️ 危险/ DANGER

* 可能有触电、爆炸或者电弧灼伤的危险!

* 在此电力设备上工作时, 请先切断所有电源。

* 若违背这些说明, 则可能会导致严重的人身伤害!

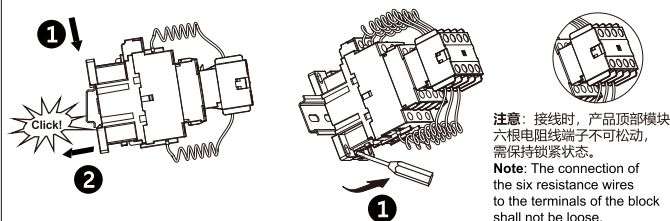
* **HAZARD OF ELECTRIC SHOCK, EXPLOSION, OR ARC FLASH.**

* Disconnect all power before servicing equipment.

* **Failure to follow these instructions will result in serious injury.**

产品安装与产品拆卸

Product Installation & Product Removal

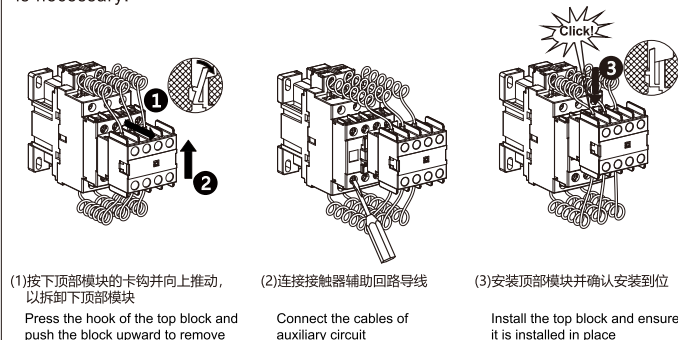


接触器辅助回路接线步骤图示

Diagram of wiring steps of contactor auxiliary circuit

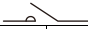





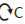
仅当需要使用接触器辅助回路时, 按以下步骤接线。

Follow the following steps for wiring only when the contactor auxiliary circuit is necessary.



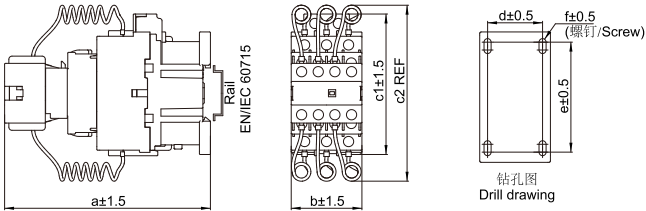
接线能力

Connecting Capacity

型号 Product Type						 A1 A2
		UEC1-EK UEC1-FK UEC1-GK	UEC1-LK UEC1-MK	UEC1-PK UEC1-TK	UEC1-WK	
 mm ²	1×	1...6	1.5...10	2.5...35	4...50	1...4
	2×	1...6	2.5...10	2.5...25	4...25	1...4
 mm ²	1×	1...6	2.5...10	2.5...35	4...50	1...4
	2×	1...6	2.5...10	2.5...16	4...25	1...4
 mm ²	1×	1...6	1.5...10	2.5...25	4...50	1...4
	2×	1...4	1.5...6	2.5...16	4...16	1...2.5
 mm	L ≤	9.6	12	-		8.1
	L >	3.7	4.2			3.7
 N·m		1.5	2.5	5	9	1.2

外形及安装尺寸

Outline and Installation Dimension



型号 Product Type	a	b	c1	c2	d	e	f	导轨 Rail
UEC1-EK UEC1-FK UEC1-GK	131	45	90	135	35	60/70	$\phi 4.5$ (M4)	35
UEC1-LK UEC1-MK	135	45	92.5	135	35	60/70	$\phi 4.5$ (M4)	35
UEC1-PK UEC1-TK	167.5	63	112.5	155	40/50	100	$\phi 4.5$ (M4)	35 or 75
UEC1-WK	172.5	70	121	161	50/60	105	$\phi 5$ (M4)	35 or 75