

Product datasheet



Specifications



Contactor, UEC1-115F, 3P (3NO), AC Coil

Main

Product Series	UEC1
Product or Component Type	Contactor
Device Short Name	UEC1-115F
Contactor Application	Motor control Resistive load
Utilisation Category	AC-3 AC-4 AC-1
Poles Description	3P
[Ue]Rated Operational Voltage	Power circuit: ≤ 690 V AC 50/60Hz
[Ie]Rated Operational Current	115 A (at ≤ 40 °C) at ≤ 400 V AC AC-3 for power circuit 200 A (at ≤ 40 °C) at ≤ 690 V AC AC-1 for power circuit
[Us] Control Circuit Voltage (AC 50/60Hz)	Voltage (V): 24 36 48 110 220 -230 380 -400 Code: B7 CC7 E7 F7 M7 Q7

Complementary

Motor Power kW	30 kW at 220/240 V AC 50/60 Hz (AC-3) 55 kW at 380/400 V AC 50/60 Hz (AC-3) 59 kW at 415 V AC 50/60 Hz (AC-3) 59 kW at 440 V AC 50/60 Hz (AC-3) 75 kW at 500 V AC 50/60 Hz (AC-3) 80 kW at 660/690 V AC 50/60 Hz (AC-3)
Pole Contact Composition	3 NO
[Ith] Conventional Free Air Thermal Current	200 A (at ≤ 40 °C) for power circuit
[Icw] Rated Short-Time Withstand Current	1100 A ≤ 40 °C - 10 s for power circuit 640 A ≤ 40 °C - 30 s for power circuit 520 A ≤ 40 °C - 1 min for power circuit 400 A ≤ 40 °C - 3 min for power circuit

	320 A ≤ 40 °C - 10 min for power circuit
Associated Fuse Rating	200 A gG at ≤ 400 V coordination type 2 for power circuit
Average Impedance	0.37 m Ω - lth 50 Hz for power circuit
[Ui] Rated Insulation Voltage	Power circuit: 1000 V conforming to IEC 60947-4-1
Overvoltage Category	III
Pollution Degree	3
[Uimp] Rated Impulse Withstand Voltage	8 kV conforming to IEC 60947
Mechanical Durability	3 M cycles
Electrical Durability	0.6 M cycles 115 A AC-3 at $U_e \leq 400$ V
Control Circuit Type	AC at 50/60 Hz standard
Control Circuit Voltage Limits	0.85...1.1 Us (-5...40 °C): operational AC 50/60 Hz 0.2...0.75 Us (-5...40 °C): drop-out AC 50/60 Hz
Inrush Power in VA	690...855 VA 50/60 Hz (at 25 °C)
Hold-in Power Consumption in VA	6.6...8.1 VA 50/60 Hz (at 25 °C)
Operating Time	23...35 ms closing, ≤ 130 ms opening
Maximum Operating Rate	Electrical: 600 cycs/h Mechanical: 1200 cycs/h
Connections - Terminals	Power circuit lugs-ring terminals 1 95 mm ² Power circuit connector 1 95 mm ² Power circuit bar 2 16 x 3 mm Power circuit bolted connection M6 Control circuit: screw clamp terminals 1 1...4 mm ² (AWG 18...12) - cable stiffness: flexible without cable end Control circuit: screw clamp terminals 2 1...4 mm ² (AWG 18...12) - cable stiffness: flexible without cable end Control circuit: screw clamp terminals 1 1...4 mm ² (AWG 18...12) - cable stiffness: flexible with cable end Control circuit: screw clamp terminals 2 1...2.5 mm ² (AWG 18...14) - cable stiffness: flexible with cable end Control circuit: screw clamp terminals 1 1...4 mm ² (AWG 18...12) - cable stiffness: solid without cable end Control circuit: screw clamp terminals 2 1...4 mm ² (AWG 18...12) - cable stiffness: solid without cable end
Tightening Torque	Power circuit: 89 lb.in (10 N·m)- on bolt locking terminals - with external hexagonal wrench 10 Control circuit: 11 lb.in (1.2 N·m) - on screw clamp terminals - with screwdriver flat $\varnothing 6$ mm Control circuit: 11 lb.in (1.2 N·m) - on screw clamp terminals - with screwdriver Philips No 2
Mounting Support	Screw

Environment

Standards	GB/T 14048.4, IEC/EN 60947-4-1, BS EN 60947-4-1
Product Certifications	CCC, CE, UKCA
IP Degree of Protection	IP00 front face conforming to IEC 60529
Permissible Ambient Air Temperature Around the Device	-5...40 °C for normal operating 40...70 °C with derating (for operation in the range of Us...1.1Us) Storage: -60...80 °C
Operating Altitude	0...3000 m without derating
Fire Resistance	Current-carrying parts: 850 °C conforming to IEC 60695-2-11
Height	162 mm
Width	163.5 mm
Depth	171 mm
Net Weight	3.60 kg

Packing Units

Unit Type of Package 1	1 box
Number of Units in Package 1	1 pcs
Package 1 Height	21.7 cm
Package 1 Width	19.3 cm
Package 1 Length	24.0 cm
Package 1 Weight	4.50 kg
Unit type of Package 2	1 carton
Number of Units in Package 2	4 pcs
Package 2 Height	24.0 cm
Package 2 Width	42.0 cm
Package 2 Length	51.0 cm
Package 2 Weight	18.0 kg

Offer Sustainability

EU RoHS Directive	Conforming
Mercury Free	Yes
China RoHS Regulation	Conforming
RoHS Exemption Information	Yes

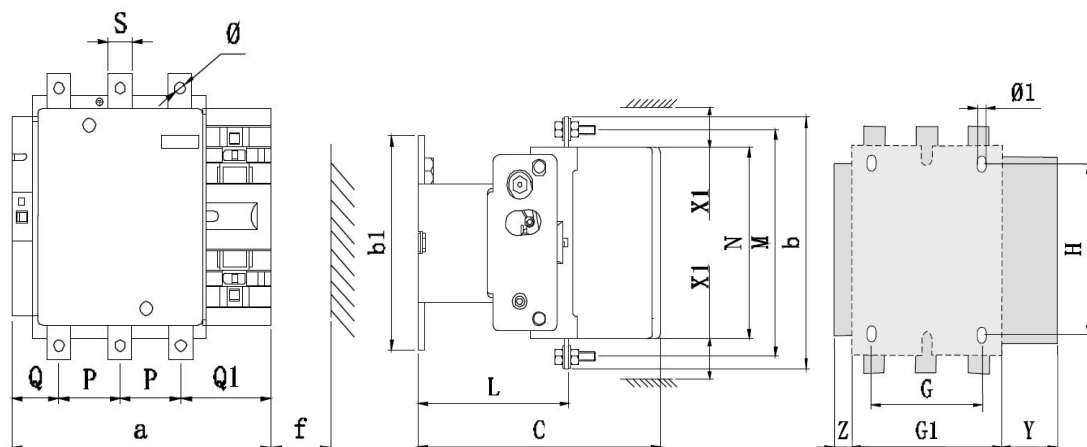
Contractual Warranty

Warranty	18 months
----------	-----------

Dimensions

UEC1-115F (3P, AC coil)

AC contactor:



	UEC1-115F
a	163.5
P	37
Q	29.5
Q1	60
S	15
Φ	M6
f	131
b	162
b1	137
M	147
N	124
C	171
L	107
G	80
H	120 ~ 106
Φ1	6.5
G1	106
Z	13.5
Y	44
X1	10 ($U_e \leq 500V$)、15 ($U_e > 500V$)

Note: Unit: mm

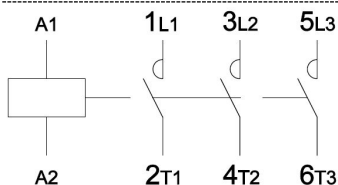
f: Minimum distance required for coil removal.

X1: Minimum electrical clearance according to operational voltage and breaking capacity.

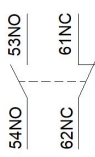
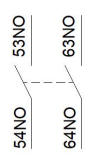
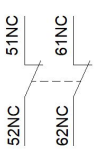
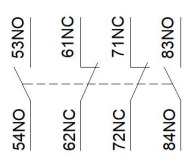
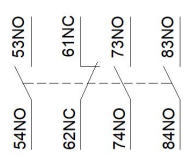
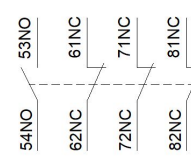
Wiring diagram

AC contactor

3P



Top mounting auxiliary contact block (instantaneous auxiliary contact)

CA1R11 (1NO1NC)	CA1R20 (2NO)	CA1R02 (2NC)
		
CA1R22 (2NO2NC)	CA1R31 (3NO1NC)	CA1R13 (1NO3NC)
		
CA1R40 (4NO)	CA1R04 (4NC)	
